

## Product datasheet for RC201995L4

### EMP2 (NM\_001424) Human Tagged Lenti ORF Clone

#### Product data:

Product Type:	Expression Plasmids
Product Name:	EMP2 (NM_001424) Human Tagged Lenti ORF Clone
Tag:	mGFP
Symbol:	EMP2
Synonyms:	XMP
Mammalian Cell Selection:	Puromycin
Vector:	pLenti-C-mGFP-P2A-Puro (PS100093)
E. coli Selection:	Chloramphenicol (34 ug/mL)
ORF Nucleotide Sequence:	The ORF insert of this clone is exactly the same as(RC201995).
Restriction Sites:	SgfI-MluI
Cloning Scheme:	

Cloning sites used for ORF Shuttling:



\* The last codon before the Stop codon of the ORF.

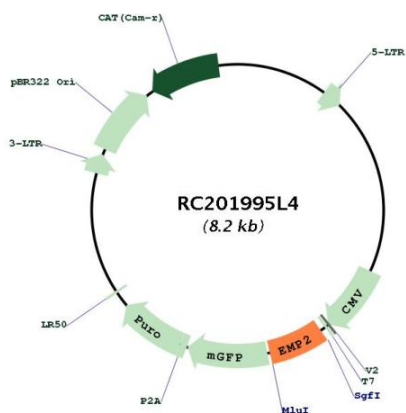
ACCN:	NM_001424
ORF Size:	501 bp



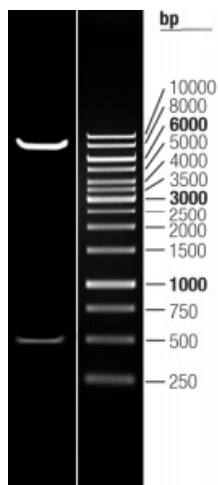
[View online »](#)

<b>OTI Disclaimer:</b>	The molecular sequence of this clone aligns with the gene accession number as a point of reference only. However, individual transcript sequences of the same gene can differ through naturally occurring variations (e.g. polymorphisms), each with its own valid existence. This clone is substantially in agreement with the reference, but a complete review of all prevailing variants is recommended prior to use. <a href="#">More info</a>
<b>OTI Annotation:</b>	This clone was engineered to express the complete ORF with an expression tag. Expression varies depending on the nature of the gene.
<b>Components:</b>	The ORF clone is ion-exchange column purified and shipped in a 2D barcoded Matrix tube containing 10ug of transfection-ready, dried plasmid DNA (reconstitute with 100 ul of water).
<b>Reconstitution Method:</b>	<ol style="list-style-type: none"><li>1. Centrifuge at 5,000xg for 5min.</li><li>2. Carefully open the tube and add 100ul of sterile water to dissolve the DNA.</li><li>3. Close the tube and incubate for 10 minutes at room temperature.</li><li>4. Briefly vortex the tube and then do a quick spin (less than 5000xg) to concentrate the liquid at the bottom.</li><li>5. Store the suspended plasmid at -20°C. The DNA is stable for at least one year from date of shipping when stored at -20°C.</li></ol>
<b>RefSeq:</b>	<a href="#">NM_001424.3</a>
<b>RefSeq Size:</b>	5186 bp
<b>RefSeq ORF:</b>	504 bp
<b>Locus ID:</b>	2013
<b>UniProt ID:</b>	<a href="#">P54851</a>
<b>Cytogenetics:</b>	16p13.13
<b>Domains:</b>	PMP22_Claudin
<b>Protein Families:</b>	Transmembrane
<b>MW:</b>	19.2 kDa
<b>Gene Summary:</b>	This gene encodes a tetraspan protein of the PMP22/EMP family. The encoded protein regulates cell membrane composition. It has been associated with various functions including endocytosis, cell signaling, cell proliferation, cell migration, cell adhesion, cell death, cholesterol homeostasis, urinary albumin excretion, and embryo implantation. It is known to negatively regulate caveolin-1, a scaffolding protein which is the main component of the caveolae plasma membrane invaginations found in most cell types. Through activation of PTK2 it positively regulates vascular endothelial growth factor A. It also modulates the function of specific integrin isomers in the plasma membrane. Up-regulation of this gene has been linked to cancer progression in multiple different tissues. Mutations in this gene have been associated with nephrotic syndrome type 10 (NPHS10). [provided by RefSeq, Mar 2015]

Product images:



Circular map for RC201995L4



Double digestion of RC201995L4 using SgfI and MluI