

Product datasheet for **RC201990**

Lamin B Receptor (LBR) (NM_002296) Human Tagged ORF Clone

Product data:

Product Type:	Expression Plasmids
Product Name:	Lamin B Receptor (LBR) (NM_002296) Human Tagged ORF Clone
Tag:	Myc-DDK
Symbol:	Lamin B Receptor
Synonyms:	C14SR; DHCR14B; LMN2R; PHA; PHASK; TDRD18
Mammalian Cell Selection:	Neomycin
Vector:	pCMV6-Entry (PS100001)
E. coli Selection:	Kanamycin (25 ug/mL)



[View online »](#)

ORF Nucleotide Sequence:

>RC201990 ORF sequence
 Red=Cloning site Blue=ORF Green=Tags(s)

TTTTGTAATACGACTCACTATAGGGCGGCCGGAATTCGTCGACTGGATCCGGTACCGAGGAGATCTGCC
 GCC**CGCATCGCC**

ATGCCAAGTAGGAAATTTGCCGATGGTGAAGTGGTAAAGAGTCGATGGCCTGGGAGTTCACCTTTATTATG
 AAGTAGAAATTCGAGCCACGACAGCACCTCCAGCTTTACACTGTGAAGTATAAAGATGGAACAGAGCT
 TGAATTGAAAGAGAATGATATTAAGCCTTAACCTTCTTTAGGCAAAGGAAAGGTGGCTCAACTCCAGT
 TCCCTTCCAGACGCGGAGGGAGTCGATCAAGGTCACGCTCCCGATCCCTGGTCGACCCTAAAAGTG
 CCCGCCGATCTGCTTCTGCTTCCACCAGGCCGACATTAAGGAAGCAAGGAGGGAAGTGAAGTTAAATT
 GACTCCGCTGATTCTGAAGCCATTTGAAATAGCATCAGCAGATATAATGGGAGCCTGAGCATATTGAG
 AGAAATGACGCACCTCATAAAAAACACAGGAAAAATTCAGTTTGTACAAAGAAAGCAGTTACATAGCAA
 CACAGTATAGCCTTCGTCGAAGAAGAGAAGAAGTCAAATTAAGAAAGAAATAGATTCTAAGGAAGAAAAATA
 CGTTGCAAAGAAGTGGCAGTGAGAACCTTTGAAGTGACCCCATCCGGGCAAAGGACTTGGAGTTTGGGA
 GGAGTACCTGGTGTGTTTCTCATCATGTTTGGCCTGCCTGTTCCTCTTCTGTTGCTGTTGATGTGTA
 AACAGAAAGATCCAGTCTTCTGAATTTCCCTCCTCCTTTGCCAGCTTGTATGAGTTATGGGAAACCAG
 AGTATTTGGGGTCTACCTCCTGTGGTTTTGATTCAAGTCCTGTTCTACCTACTGCCAATGGAAAGGTT
 GTAGAAGGAACGCCTCTTATTGATGGAAGAAGACTCAAGTATAGATTAATGGATTCTATGCTTTTATCC
 TGACATCTGCAGTCATCGGAACATCTCTTCCAGGGCGTAGAGTTTCATTACGTGTACAGTCATTTTCT
 TCAGTTTGCACCTGCGGCCACTGTTTTTGTGTGGTCTTGAGTGTGTATCTACATGCGCTCTTTGAAA
 GCGCCCCGGAATGACCTGTCGCTGCCAGCTCTGAAATGCTGTCTATGATTTCTTATTGGCCGTGAAT
 TAAACCCTCGAATGGTACTTTTGATCTCAAATACTTTTGTGAATTGCGCCCCGGATTGATTGGATGGGT
 GGTTATTAACCTGGTGATGCTTTTGGCTGAAATGAAATACAGGACCGCGCTGTTCCATCCTTGGCCATG
 ATTTTAGTTAATAGTTTCCAGCTTCTCTATGTGGTGGATGCTCTGGAATGAGGAAGCGTTGTTGACGA
 CCATGGACATCATCCACGATGGATTTGGATTGATGCTGGCTTTTGGAGACTTGGTGTGGTTCCCTTTAT
 TTACAGCTTCCAAGCCTTTTATTAGTCAGTCATCCAAATGAAGTGTCTTGGCCAATGGCTTCTCTAATT
 ATTGTTCTGAACTTTGTGGTTATGTAATCTCCGAGGTGCAAATTCAGAAAAATGCATTCCGGAAAA
 ATCCCAGTGATCCAAAGCTTGCACATTTAAAACCATTCACTTCAACGGGAAAAATCTTCTAGTTTC
 TGGATGGTGGGGCTTTGTTGCCACCCCAATTACTTGGGTGATCTCATCATGGCCTTGGCGTGGTCCCTC
 CCATGTGGTTTTAACACATTCTGCCTTATTTCTACATAATTTATTTACCATGTTGCTTGTCCACCGAG
 AAGCTCGTGACGAGTACCACTGTAAAGAAGAAATACGGCGTGGCTTGGGAAAAGTACTGTCAGCGTGTGCC
 CTACCGTATATTTCCATACATCTAC

ACGCGTACGCGGCCGCTCGAGCAGAAACTCATCTCAGAAGAGGATCTGGCAGCAAATGATATCCTGGATT
 ACAAGGATGACGACGATAAGGTTTAA

Protein Sequence:

>RC201990 protein sequence
 Red=Cloning site Green=Tags(s)

MPSRKFADGEVVRGRWPGSSLYEVEILSHDSTSQLYTVKYKDGTELELKENDIKPLTSFRQRKGGSTSS
 SPSRRRGSRSRSRSPGRPPKSARRSASASHQADIKEARREVEVKLTPLILKPFNGNSISRYNGEPEHIE
 RNDAPHKNTQEKFSLSQESSYIATQYSLRPRREEVKLKEIDSKEEKYVAKELAVRTFEVTPIRAKDLEFG
 GVPGVFLIMFGLPVFLFLLLLMCKQKDPSSLNFPPLPALYELWETRVFGVYLLWFLIQVLFYLLPIGKV
 VEGTPLIDGRRLLKYRLNGFYAFILTSAVIGTSLFQGVFHYVYSHFLQFALAATVFCVVLSVYLYMRSK
 APRNDLSPASSGNAVYDFFIGRELNPRIIGTDFDKYFCELRPGLIGWVINLVMLLAEMKIQDRAVPSLAM
 ILVNSFQLLYVVDALWNEEALLTTMDIHDGFGFMLAFGDLVWVPIYYSFQAFYLVSHPNEVSWPMASLI
 IVLKLKCGYVIFRANSQKNAFRKNPSDPKLAHLKTIHTSTGKNLLVSGWVGFVRHPNYLGDLMALAWSL
 PCGFNHILPYFYIIFFTMLLVHREARDEYHCKKKYGVAVEKYCQRPYRIFPYIY

TRTRPLEQKLISEEDLAANDILDYKDDDDKV

Chromatograms: https://cdn.origene.com/chromatograms/mk6232_h08.zip
 Restriction Sites: SgfI-MluI
 Cloning Scheme:



ACCN: NM_002296

ORF Size: 1845 bp

OTI Disclaimer: The molecular sequence of this clone aligns with the gene accession number as a point of reference only. However, individual transcript sequences of the same gene can differ through naturally occurring variations (e.g. polymorphisms), each with its own valid existence. This clone is substantially in agreement with the reference, but a complete review of all prevailing variants is recommended prior to use. [More info](#)

OTI Annotation: This clone was engineered to express the complete ORF with an expression tag. Expression varies depending on the nature of the gene.

Components: The ORF clone is ion-exchange column purified and shipped in a 2D barcoded Matrix tube containing 10ug of transfection-ready, dried plasmid DNA (reconstitute with 100 ul of water).

Reconstitution Method:

1. Centrifuge at 5,000xg for 5min.
2. Carefully open the tube and add 100ul of sterile water to dissolve the DNA.
3. Close the tube and incubate for 10 minutes at room temperature.
4. Briefly vortex the tube and then do a quick spin (less than 5000xg) to concentrate the liquid at the bottom.
5. Store the suspended plasmid at -20°C. The DNA is stable for at least one year from date of shipping when stored at -20°C.

RefSeq: [NM_002296.4](#)

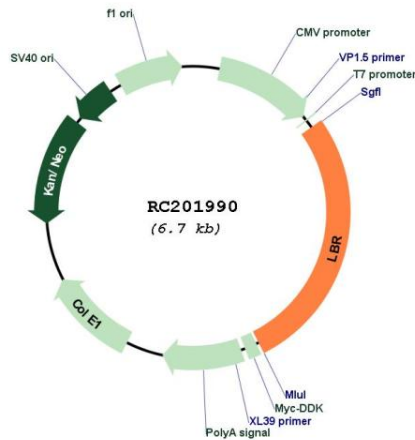
RefSeq Size: 3837 bp

RefSeq ORF: 1848 bp

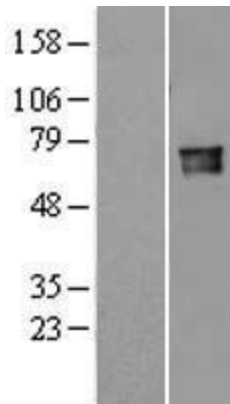
Locus ID: 3930
UniProt ID: [Q14739](#)
Cytogenetics: 1q42.12
Domains: ERG4_ERG24, TUDOR
Protein Families: Druggable Genome, Transmembrane
MW: 70.7 kDa

Gene Summary: The protein encoded by this gene belongs to the ERG4/ERG24 family. It localized in the nuclear envelope inner membrane and anchors the lamina and the heterochromatin to the membrane. It may mediate interaction between chromatin and lamin B. Mutations of this gene has been associated with autosomal recessive HEM/Greenberg skeletal dysplasia. Alternative splicing occurs at this locus and two transcript variants encoding the same protein have been identified. [provided by RefSeq, Jul 2008]

Product images:



Circular map for RC201990



Western blot validation of overexpression lysate (Cat# [LY405131]) using anti-DDK antibody (Cat# [TA50011-100]). Left: Cell lysates from untransfected HEK293T cells; Right: Cell lysates from HEK293T cells transfected with [RC224569] using transfection reagent MegaTran 2.0 (Cat# [TT210002]).