

## Product datasheet for RC201989

### EPCAM (NM\_002354) Human Tagged ORF Clone

#### Product data:

Product Type:	Expression Plasmids
Product Name:	EPCAM (NM_002354) Human Tagged ORF Clone
Tag:	Myc-DDK
Symbol:	EPCAM
Synonyms:	DIAR5; EGP-2; EGP40; EGP314; ESA; HNPCC8; KS1/4; KSA; M4S1; MIC18; MK-1; TACSTD1; TROP1
Mammalian Cell Selection:	Neomycin
Vector:	pCMV6-Entry (PS100001)
E. coli Selection:	Kanamycin (25 ug/mL)
ORF Nucleotide Sequence:	>RC201989 representing NM_002354 Red=Cloning site Blue=ORF Green=Tags(s)

TTTTGTAATACGACTCACTATAGGGCGGCCGGAATTCGTCGACTGGATCCGGTACCGAGGAGATCTGCC  
GCCGCGATCGCC

ATGGCGCCCCGAGGTCTCGCGTTCGGGCTTCTGCTTGCCGCGGCGACGGCGACTTTTGCCGAGCTC  
AGGAAGAATGTGTCTGTGAAAACACAAGCTGGCCGTAAGCTGCTTTGTGAATAATAATCGTCAATGCCA  
GTGTACTTCAGTTGGTGCACAAAATACTGTCAATTTGCTCAAAGCTGGCTGCCAAATGTTTGGTGATGAAG  
GCAGAAATGAATGGCTCAAACTTGGGAGAAGAGCAAACCTGAAGGGGCCCTCCAGAACAATGATGGGC  
TTTATGATCCTGACTGCGATGAGAGCGGGCTCTTAAGGCCAAGCAGTGCAACGGCACCTCCACGTGCTG  
GTGTGTGAACACTGCTGGGTGAGAAGAACAGACAAGGACACTGAAATAACCTGCTCTGAGCGAGTGAGA  
ACCTACTGGATCATCATTGAACTAAAACACAAAGCAAGAGAAAAACCTTATGATAGTAAAAGTTTGCGGA  
CTGCACCTCAGAAGGAGATCACACGCGTTATCAACTGGATCCAAAATTTATCACGAGTATTTTGTATGA  
GAATAATGTTATCACTATTGATCTGTTCAAAAATCTTCTCAAAAAACTCAGAATGATGTGGACATAGCT  
GATGTGGCTTATTTTAAAAAGATGTTAAAGGTGAATCCTTGTTTCATTCTAAGAAAATGGACCTGA  
CAGTAAATGGGGAACAACCTGGATCTGGATCCTGGTCAAACCTTAAATTTATGTTGATGAAAAAGCACC  
TGAATTCATGACAGGGTCTAAAAGCTGGTGTATTGCTGTTATTGTGGTTGTGGTGATAGCAGTTGTT  
GCTGGAATTGTTGTGCTGTTATTTCCAGAAAGAAGAGAATGGCAAAGTATGAGAAGGCTGAGATAAAGG  
AGATGGGTGAGATGCATAGGGAACCAATGCA

ACGCGGCCGCTCGAGCAGAACTCATCTCAGAAGAGGATCTGGCAGCAAATGATATCCTGGA  
TTACAAGGATGACGACGATAAGGTTTAA



[View online »](#)

**Protein Sequence:** >RC201989 representing NM\_002354  
 Red=Cloning site Green=Tags(s)

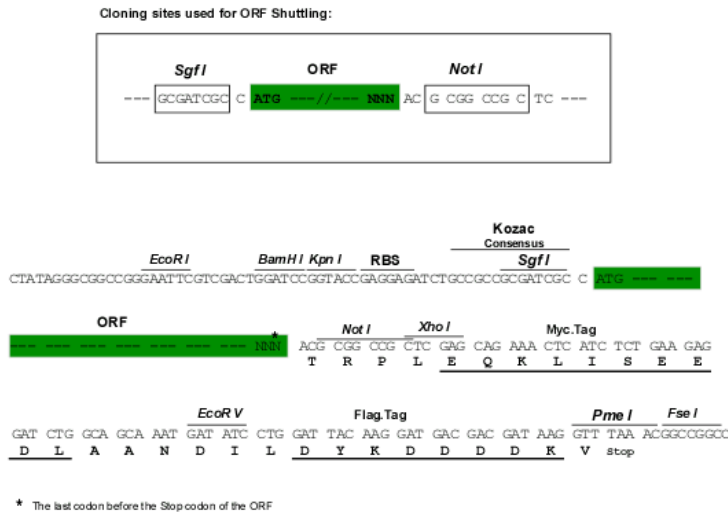
MAPPQVLAFGLLLAAATATFAAAQEEVCENYKLAVNCFVNNRQCQCTSVGAQNTVICSKLAACLVMK  
 AEMNGSKLGRRAKPEGALQNNGLYDPDCDESGLFKAKQCNSTWCVCNTAGVRRTDKDEITCSEVR  
 TYWIIIELKHKAREKPYDSKSLRTALQKEITTRYQLDPKFITSILYENNVITIDLQNSSQKTQNDVDIA  
 DVAYYFEKDVKGESLFHSHKMDLTVNQEQLDLDPGQTLIYYVDEKAPEFSMQGLKAGVIAVIVVVVIAVV  
 AGIVVLVISRKKRMAKYEKAEIKEMGEMHRELNA

TRRL**EQKLISEEDLAANDILDYKDDDDKV**

**Chromatograms:** [https://cdn.origene.com/chromatograms/mg4725\\_b01.zip](https://cdn.origene.com/chromatograms/mg4725_b01.zip)

**Restriction Sites:** SgfI-NotI

**Cloning Scheme:**



**ACCN:** NM\_002354

**ORF Size:** 942 bp

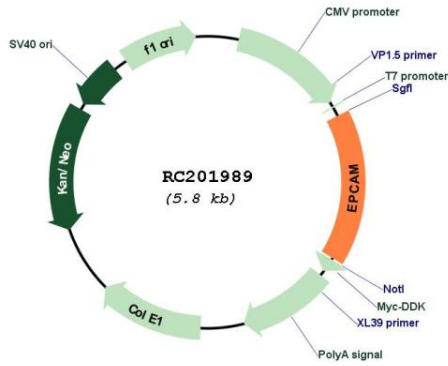
**OTI Disclaimer:** The molecular sequence of this clone aligns with the gene accession number as a point of reference only. However, individual transcript sequences of the same gene can differ through naturally occurring variations (e.g. polymorphisms), each with its own valid existence. This clone is substantially in agreement with the reference, but a complete review of all prevailing variants is recommended prior to use. [More info](#)

**OTI Annotation:** This clone was engineered to express the complete ORF with an expression tag. Expression varies depending on the nature of the gene.

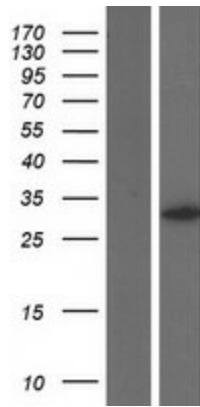
**Components:** The ORF clone is ion-exchange column purified and shipped in a 2D barcoded Matrix tube containing 10ug of transfection-ready, dried plasmid DNA (reconstitute with 100 ul of water).

<b>Reconstitution Method:</b>	<ol style="list-style-type: none"><li>1. Centrifuge at 5,000xg for 5min.</li><li>2. Carefully open the tube and add 100ul of sterile water to dissolve the DNA.</li><li>3. Close the tube and incubate for 10 minutes at room temperature.</li><li>4. Briefly vortex the tube and then do a quick spin (less than 5000xg) to concentrate the liquid at the bottom.</li><li>5. Store the suspended plasmid at -20°C. The DNA is stable for at least one year from date of shipping when stored at -20°C.</li></ol>
<b>Note:</b>	Plasmids are not sterile. For experiments where strict sterility is required, filtration with 0.22um filter is required.
<b>RefSeq:</b>	<a href="#">NM_002354.1</a> , <a href="#">NP_002345.1</a>
<b>RefSeq Size:</b>	1528 bp
<b>RefSeq ORF:</b>	945 bp
<b>Locus ID:</b>	4072
<b>UniProt ID:</b>	<a href="#">P16422</a>
<b>Cytogenetics:</b>	2p21
<b>Domains:</b>	thyroglobulin_1
<b>Protein Families:</b>	ES Cell Differentiation/IPS, Transmembrane
<b>MW:</b>	34.9 kDa
<b>Gene Summary:</b>	This gene encodes a carcinoma-associated antigen and is a member of a family that includes at least two type I membrane proteins. This antigen is expressed on most normal epithelial cells and gastrointestinal carcinomas and functions as a homotypic calcium-independent cell adhesion molecule. The antigen is being used as a target for immunotherapy treatment of human carcinomas. Mutations in this gene result in congenital tufting enteropathy. [provided by RefSeq, Dec 2008]

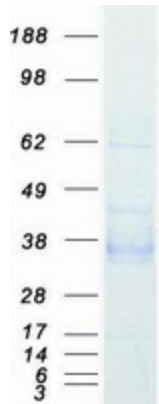
Product images:



Circular map for RC201989



Western blot validation of overexpression lysate (Cat# [LY400847]) using anti-DDK antibody (Cat# [TA50011-100]). Left: Cell lysates from untransfected HEK293T cells; Right: Cell lysates from HEK293T cells transfected with RC201989 using transfection reagent MegaTran 2.0 (Cat# [TT210002]).



Coomassie blue staining of purified EPCAM protein (Cat# [TP301989]). The protein was produced from HEK293T cells transfected with EPCAM cDNA clone (Cat# RC201989) using MegaTran 2.0 (Cat# [TT210002]).