

Product datasheet for RC201986

CCN3 (NOV) (NM_002514) Human Tagged ORF Clone

Product data:

Product Type:	Expression Plasmids
Product Name:	CCN3 (NOV) (NM_002514) Human Tagged ORF Clone
Tag:	Myc-DDK
Symbol:	CCN3
Synonyms:	IBP-9; IGFBP-9; IGFBP9; NOV; NOVh
Mammalian Cell Selection:	Neomycin
Vector:	pCMV6-Entry (PS100001)
E. coli Selection:	Kanamycin (25 ug/mL)
ORF Nucleotide Sequence:	>RC201986 ORF sequence Red=Cloning site Blue=ORF Green=Tags(s)

TTTTGTAATACGACTCACTATAGGGCGCCGGGAATTCGTCGACTGGATCCGGTACCGAGGAGATCTGCC
GCC**CGATCGCC**

ATGCAGAGTGTGCAGAGCACGAGCTTTTGTCTCCGAAAGCAGTGCCTTTGCCTGACCTTCTGCTTCTCC
ATCTCCTGGGACAGGTCGCTGCGACTCAGCGTGCCCTCCCCAGTGCCCGGGCCGGTGCCTGCGACGCC
GCCGACCTGCGCCCCGGGTGCGCGGGTGTGGACGGTGTCTCATGCTGTCTGGTGTGTGCCCGCCAG
CGTGGCGAGAGCTGCTCAGATCTGGAGCCATGCGACGAGAGCAGTGGCCTCTACTGTGATCGCAGCGCG
ACCCAGCAAACAGACTGGCATCTGCACGGCGGTAGAGGGAGATAACTGTGTGTTTCGATGGGGTCACTA
CCGAGTGGAGAGAAATTCAGCCAAGCTGCAAATCCAGTGCACCTGCAGAGATGGGCAGATTGGCTGT
GTGCCCGCTGTGAGCTGGATGTGCTACTGCCTGAGCCTAACTGCCAGCTCCAAGAAAAGTTGAGGTGC
CTGGAGAGTGTGTGAAAAGTGGATCTGTGGCCAGATGAGGAGGATTCACTGGGAGGCCTTACCCTTGC
AGCTTACAGGCCAGAAGCCACCCTAGGAGTAGAAGTCTCTGACTCAAGTGTCAACTGCATTGAACAGACC
ACAGAGTGGACAGCATGCTCCAAGAGCTGTGGTATGGGGTTCTCCACCCGGGTACCAATAGGAACCGTC
AATGTGAGATGCTGAAACAGACTCGGCTCTGCATGGTGGCGCCCTGTGAACAAGAGCCAGAGCAGCCAAC
AGATAAGAAAAGGAAAAAGTGTCTCCGACCAAGAAGTCACTCAAAGCCATCCACCTGCAGTTCAAGAAC
TGCACCAGCTGCACACCTACAAGCCAGTTCGTGGGGTCTGCAGTGTGGCCGCTGCTGCACTCCCC
ACAATACCAAAACCATCCAGGCAGAGTTTCAGTGTCTCCAGGGCAAATAGTCAAGAAGCCAGTGTGTT
CATTGGGACCTGCACCTGTACACCAACTGTCTAAGAACAATGAGGCCTTCTCCAGGAGCTGGAGCTG
AAGACTACCAGAGGGAAAATG

ACGCGTACGCGGCCGCTCGAGCAGAAACTCATCTCAGAAGAGGATCTGGCAGCAAATGATATCCTGGATT
ACAAGGATGACGACGATAAGGTTTAA



[View online »](#)

Protein Sequence: >RC201986 protein sequence
Red=Cloning site Green=Tags(s)

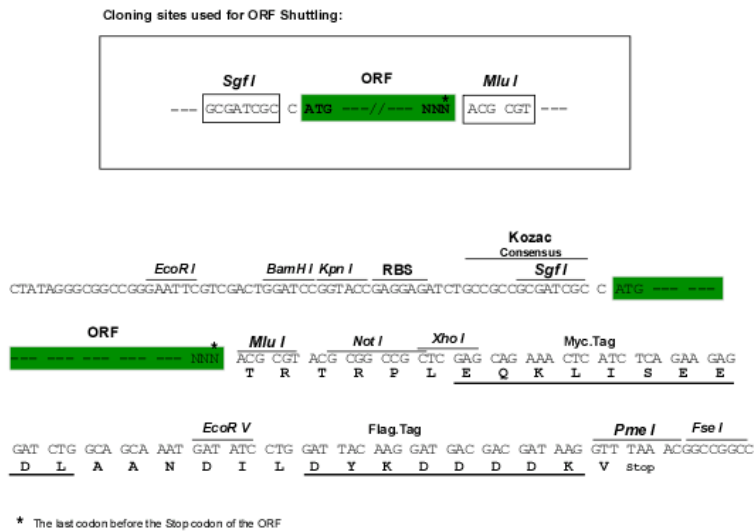
MQSVQSTSFCLRKQCLCLTFLLHLLGQVAATQRCPPQCPGRCPATPPTCAPGVRAVL DGCSCCLVCARQ
 RGESCS DLEPCDESSGLYCDRSADPSKQTGICTAVEGDNCVFDGVIYRSGEKFQPSCKFQCTCRDGGIGC
 VPRQLDVL LPEPNCAPARKVEVPGECEKWIICGPDEEDSLGGLTLAAAYRPEATLGVESVSDSSVNCIEQT
 TEWTACSKSCGMGFSTRVTNRNRQCEMLKQTRL CMVRPCEQEPEQPTDKKGGKCLRTKSLKAIHLQFKN
 CTS LHTYKPRFCGVCS DGRCC TPHNTKTIQAEFQCSPGQIVKKPVMVIGTCTCHTNC PKNNEAFLQEL
 KTRRGKM

TRTRPLEQKLISEEDLAANDILDYKDDDDKV

Chromatograms: https://cdn.origene.com/chromatograms/mk6134_d11.zip

Restriction Sites: SgfI-MluI

Cloning Scheme:



ACCN: NM_002514

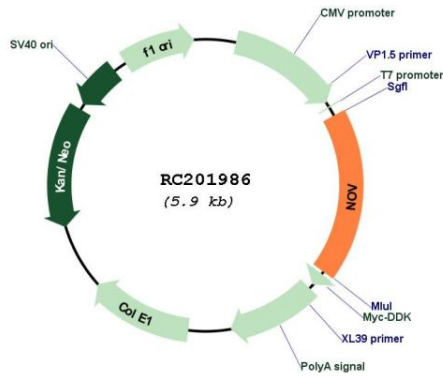
ORF Size: 1071 bp

OTI Disclaimer: Due to the inherent nature of this plasmid, standard methods to replicate additional amounts of DNA in E. coli are highly likely to result in mutations and/or rearrangements. Therefore, OriGene does not guarantee the capability to replicate this plasmid DNA. Additional amounts of DNA can be purchased from OriGene with batch-specific, full-sequence verification at a reduced cost. Please contact our customer care team at custsupport@origene.com or by calling 301.340.3188 option 3 for pricing and delivery.

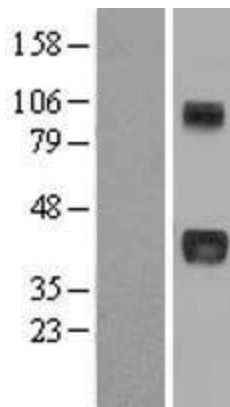
The molecular sequence of this clone aligns with the gene accession number as a point of reference only. However, individual transcript sequences of the same gene can differ through naturally occurring variations (e.g. polymorphisms), each with its own valid existence. This clone is substantially in agreement with the reference, but a complete review of all prevailing variants is recommended prior to use. [More info](#)

OTI Annotation:	This clone was engineered to express the complete ORF with an expression tag. Expression varies depending on the nature of the gene.
Components:	The ORF clone is ion-exchange column purified and shipped in a 2D barcoded Matrix tube containing 10ug of transfection-ready, dried plasmid DNA (reconstitute with 100 ul of water).
Reconstitution Method:	<ol style="list-style-type: none">1. Centrifuge at 5,000xg for 5min.2. Carefully open the tube and add 100ul of sterile water to dissolve the DNA.3. Close the tube and incubate for 10 minutes at room temperature.4. Briefly vortex the tube and then do a quick spin (less than 5000xg) to concentrate the liquid at the bottom.5. Store the suspended plasmid at -20°C. The DNA is stable for at least one year from date of shipping when stored at -20°C.
RefSeq:	NM_002514.4
RefSeq Size:	2601 bp
RefSeq ORF:	1074 bp
Locus ID:	4856
UniProt ID:	P48745
Cytogenetics:	8q24.12
Domains:	IB, tsp_1, VWC, CT, Cys_knot
Protein Families:	ES Cell Differentiation/IPS, Secreted Protein
MW:	39.2 kDa
Gene Summary:	The protein encoded by this gene is a small secreted cysteine-rich protein and a member of the CCN family of regulatory proteins. CNN family proteins associate with the extracellular matrix and play an important role in cardiovascular and skeletal development, fibrosis and cancer development. [provided by RefSeq, Feb 2009]

Product images:



Circular map for RC201986



Western blot validation of overexpression lysate (Cat# [LY400897]) using anti-DDK antibody (Cat# [TA50011-100]). Left: Cell lysates from untransfected HEK293T cells; Right: Cell lysates from HEK293T cells transfected with RC201986 using transfection reagent MegaTran 2.0 (Cat# [TT210002]).