

Product datasheet for **RC201982**

RALB (NM_002881) Human Tagged ORF Clone

Product data:

Product Type: Expression Plasmids
 Product Name: RALB (NM_002881) Human Tagged ORF Clone
 Tag: Myc-DDK
 Symbol: RALB
 Mammalian Cell Selection: Neomycin
 Vector: pCMV6-Entry (PS100001)
 E. coli Selection: Kanamycin (25 ug/mL)
 ORF Nucleotide Sequence: >RC201982 ORF sequence
 Red=Cloning site Blue=ORF Green=Tags(s)

TTTTGTAATACGACTCACTATAGGGCGGCCGGAATTCGTCGACTGGATCCGGTACCGAGGAGATCTGCC
 GCC**CGATCGCC**

ATGGCTGCCAACAAGAGTAAGGGCCAGAGCTCCTTGGCCCTCCACAAGGTGATCATGGTTGGCAGCGGAG
 GCGTTGGCAAGTCAGCCCTGACGCTTCAGTTTCATGTATGACGAGTTTGTAGAAGACTATGAACCTACCAA
 AGCTGACAGTTATAGAAAGAAAGTGGTTCTTGTATGGGGAAGAAGTTCAGATAGATATTCTGGACACCGCT
 GGGCAAGAGGACTACGCAGCCATTCGAGATAACTACTTTTCGGAGTGGGGAAGGTTTCTTCTTGTGTTCT
 CAATCACAGAACATGAATCCTTTACAGCAACTGCCGAATTCAGGGAACAGATTCTCCGTGAAGGCTGA
 AGAAGATAAAAATTCCTACTGCTCGTCGTTGGGAAACAAGTCTGACCTAGAGGAGCGGAGGCAGGTGCCTGTG
 GAGGAGGCCAGGAGTAAAGCCGAAGAGTGGGGCGTGACGTACGTGGAGACGTACGCGAAGACCCGGGCCA
 ACGTGGACAAGGTGTTCTTTGACCTAATGAGAGAAATCAGAACAAAGAAGATGTCAGAAAACAAAGACAA
 GAATGGCAAGAAAAGCAGCAAGAACAAGAAAAGTTTTAAAGAAAGATGTTGCTTACTA

ACGCGTACGCGGCCGCTCGAGCAGAAACTCATCTCAGAAGAGGATCTGGCAGCAATGATATCCTGGATT
 ACAAGGATGACGACGATAAGGTTTAA

Protein Sequence: >RC201982 protein sequence
 Red=Cloning site Green=Tags(s)

MAANKSKGQSSLALHKVIMVSGGVGKLSALTLQFMYDEFVEDYEPTKADSYRKKVVLGDGEEVQIDILDTA
 GQEDYAAIRDNYFRSGEGFLLVFSITEHESFTATAEFREQILRVKAEEDKIPLLVGNKSDLEERRQVPV
 EEARSKAEWGVQYVETSAKTRANVDKVFDFLMREIRTKMSENKDKNGKKSSKNKKSFKERCCLL

TRTRPLEQKLISEEDLAANDILDYKDDDDKV

Chromatograms: https://cdn.origene.com/chromatograms/mk6011_b07.zip



[View online »](#)

Restriction Sites: SgfI-MluI

Cloning Scheme:



ACCN: NM_002881

ORF Size: 618 bp

OTI Disclaimer: The molecular sequence of this clone aligns with the gene accession number as a point of reference only. However, individual transcript sequences of the same gene can differ through naturally occurring variations (e.g. polymorphisms), each with its own valid existence. This clone is substantially in agreement with the reference, but a complete review of all prevailing variants is recommended prior to use. [More info](#)

OTI Annotation: This clone was engineered to express the complete ORF with an expression tag. Expression varies depending on the nature of the gene.

Components: The ORF clone is ion-exchange column purified and shipped in a 2D barcoded Matrix tube containing 10ug of transfection-ready, dried plasmid DNA (reconstitute with 100 ul of water).

- Reconstitution Method:**
1. Centrifuge at 5,000xg for 5min.
 2. Carefully open the tube and add 100ul of sterile water to dissolve the DNA.
 3. Close the tube and incubate for 10 minutes at room temperature.
 4. Briefly vortex the tube and then do a quick spin (less than 5000xg) to concentrate the liquid at the bottom.
 5. Store the suspended plasmid at -20°C. The DNA is stable for at least one year from date of shipping when stored at -20°C.

Note: Plasmids are not sterile. For experiments where strict sterility is required, filtration with 0.22um filter is required.

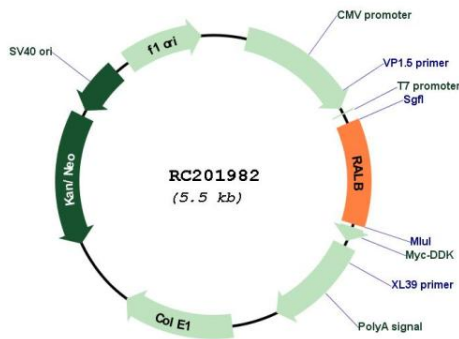
RefSeq: [NM_002881.3](#)

RefSeq Size: 2275 bp

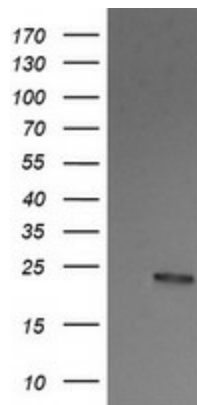
RefSeq ORF: 621 bp

Locus ID: 5899
UniProt ID: [P11234](#)
Cytogenetics: 2q14.2
Domains: ras, RAN, RAS, RHO, RAB
Protein Families: Druggable Genome
Protein Pathways: Pancreatic cancer, Pathways in cancer
MW: 23.4 kDa
Gene Summary: This gene encodes a GTP-binding protein that belongs to the small GTPase superfamily and Ras family of proteins. GTP-binding proteins mediate the transmembrane signaling initiated by the occupancy of certain cell surface receptors. [provided by RefSeq, Jul 2008]

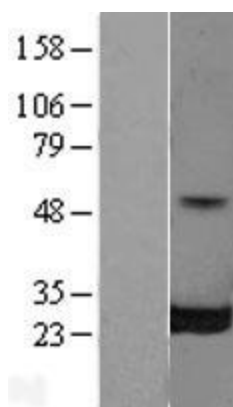
Product images:



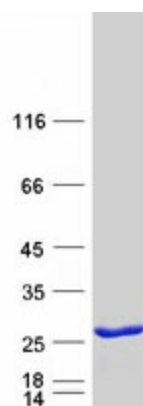
Circular map for RC201982



HEK293T cells were transfected with the pCMV6-ENTRY control (Cat# [PS100001], Left lane) or pCMV6-ENTRY RALB (Cat# RC201982, Right lane) cDNA for 48 hrs and lysed. Equivalent amounts of cell lysates (5 ug per lane) were separated by SDS-PAGE and immunoblotted with anti-RALB (Cat# [TA505880]). Positive lysates [LY419049] (100ug) and [LC419049] (20ug) can be purchased separately from OriGene.



Western blot validation of overexpression lysate (Cat# [LY419049]) using anti-DDK antibody (Cat# [TA50011-100]). Left: Cell lysates from untransfected HEK293T cells; Right: Cell lysates from HEK293T cells transfected with RC201982 using transfection reagent MegaTran 2.0 (Cat# [TT210002]).



Coomassie blue staining of purified RALB protein (Cat# [TP301982]). The protein was produced from HEK293T cells transfected with RALB cDNA clone (Cat# RC201982) using MegaTran 2.0 (Cat# [TT210002]).