

Product datasheet for **RC201967**

ARSG (NM_014960) Human Tagged ORF Clone

Product data:

Product Type:	Expression Plasmids
Product Name:	ARSG (NM_014960) Human Tagged ORF Clone
Tag:	Myc-DDK
Symbol:	ARSG
Synonyms:	USH4
Vector:	pCMV6-Entry (PS100001)
E. coli Selection:	Kanamycin (25 ug/mL)
Cell Selection:	Neomycin



[View online »](#)

ORF Nucleotide Sequence:

>RC201967 ORF sequence
 Red=Cloning site Blue=ORF Green=Tags(s)

TTTTGTAATACGACTCACTATAGGGCGGCCGGAATTCGTCGACTGGATCCGGTACCGAGGAGATCTGCC
 GCC**GCGATCGCC**

ATGGGCTGGCTTTTTCTAAAGTTTTGTTGGCGGGAGTGAGTTTCTCAGGATTTCTTTATCTCTTGTGG
 ATTTTTGCATCAGTGGGAAAACAAGAGGACAGAAGCCAACTTTGTGATTATTTGGCCGATGACATGGG
 GTGGGTGACCTGGGAGCAAACCTGGGCAGAAAACAAGGACACTGCCAACCTTGATAAGATGGCTTCGGAG
 GGAATGAGGTTTTGTGATTTCCATGCAGCTGCCTCCACCTGCTCACCTCCCGGGCTTCTTGCTCACCG
 GCCGGCTTGGCCTTCGCAATGGAGTCACACGCAACTTTGCAGTCACTTCTGTGGGAGGCCTCCGCTCAA
 CGAGACCACCTTGGCAGAGGTGCTGCAGCAGCGGGTTACGTCACTGGGATAATAGGCAATGGCATCTT
 GGACACCAGGCTCTTATCACCCAACTCCGTGGTTTTGATTACTACTTTGGAATCCCATATAGCCATG
 ATATGGGCTGACTGATACTCCAGGCTACAACCACCTCCTTGTCCAGCGTGTCCACAGGGTGATGGACC
 ATCAAGGAACCTTCAAAGAGACTGTTACTGACGTGGCCCTCCCTCTTTATGAAAACCTCAACATTGTG
 GAGCAGCCGGTGAACCTGAGCAGCCTTGCCAGAGTATGCTGAGAAAGCAACCCAGTTCATCCAGCGTG
 CAAGCACCAGCGGGAGGCCCTTCTGCTCTATGTGGCTCTGGCCACATGCACGTGCCCTTACCTGTGAC
 TCAGTACCAGCAGCGCCACGGGCAGAAAGCCTGTATGGTGCAGGGCTCTGGGAGATGGACAGTCTGGT
 GGCCAGATCAAGGACAAAGTTGACCACACAGTGAAGGAAAACACATTCCTCTGGTTTACAGGAGACAATG
 GCCCGTGGGCTCAGAAGTGTGAGCTAGCGGGCAGTGTGGTCCCTTCACTGGATTTTGGCAAACCTCGTCA
 AGGGGGAAGTCCAGCCAAGCAGACGACCTGGGAAGGAGGGCACCGGGTCCCAGCACTGGCTTACTGGCCT
 GGCAGAGTCCAGTTAATGTACCAGCACTGCCTTGTAAAGCGTGTGGACATTTTCCAACCTGTGGTAG
 CCCTGGCCAGGCCAGCTTACCTCAAGGACGGCCTTTGATGGTGTGGAGCTCCGAGGTGCTCTTTGG
 CCGGTACACAGCCTGGGCACAGGGTGTGTTCCACCCCAACAGCGGGCAGCTGGAGAGTTTGGAGCCCTG
 CAGACTGTCCGCCTGGAGCGTTACAAGGCTTCTACATTACCGGTGGAGCCAGGGCGTGTGATGGGAGCA
 CGGGCCCTGAGCTGCAGCATAAGTTTCTCTGATTTTCAACCTGGAAGACGATACCGCAGAAGCTGTGCC
 CCTAGAAAAGAGGTGGTGCAGGAGTACCAGGCTGTGCTGCCCGAGGTGAGAAAGTTCTTGCAGACGCTCTC
 CAAGACATTGCCAACGACAACATCTCCAGCGCAGATTACTCAGGACCTTCACTAACTCCCTGCTGTA
 ATCCCTACCAAATTCCTGCCGCTGTCAAGCCGCA

ACGCGTACGCGGCCGCTCGAGCAGAAACTCATCTCAGAAGAGGATCTGGCAGCAAATGATATCTGGATT
 ACAAGGATGACGACGATAAGGTTTAA

Protein Sequence:

>RC201967 protein sequence
 Red=Cloning site Green=Tags(s)

MGWFLKVLVLAGVSFSGFLYPLVDFCISGKTRGQKPNFVILADDMGWGDLGANWAETKDTANLDKMAE
 GMRFVDFHAAASTCSPSRASLLTGRLGLRNGVTRNFVAVTSVGGPLPLNETTLAEVLQQAGYVTGIIGKWHL
 GHHGSYHPNFRGFDYYFGIPYSHDMGCTDTPGYNHPPCPACPDGSPSRNLQRDCYTDVALPLYENLNIV
 EQPVNLSLAQKYAEKATQFIQRASTSGRPFLLYVALAHMHVPLPVTQLPAAPRGRSLYAGLWEMDSL
 VQIKDKVDHTVKENTFLWFTGDNWPWAQKCELAGSVGPF TGFQTRQGGSPAKQTTWEGGHRVPALAYWP
 GRVPVNVSTALLSVLDIFPTVVALAQASLPQGRRFDGVDVSEVLFGRSQPGRVLFHPNSGAAGEFGAL
 QTVRLERYKAFYITGGARACDGSTGPELQHKFPLIFNLEDDTAEAVPLERGGAEYQAVLPEVRKVLADVL
 QDIANDNISSADYTDPSVTPCCNPYQIACRCQAA

TRTRPLEQKLISEEDLAANDILDYKDDDDKV

Chromatograms:

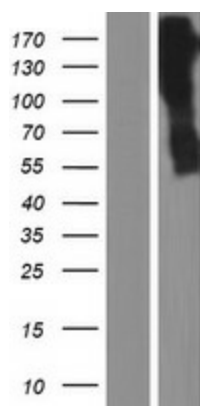
https://cdn.origene.com/chromatograms/mk6012_b02.zip

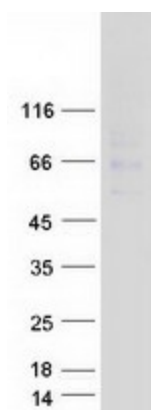
Restriction Sites:

SgfI-MluI

ORF Size:	1575 bp
OTI Disclaimer:	The molecular sequence of this clone aligns with the gene accession number as a point of reference only. However, individual transcript sequences of the same gene can differ through naturally occurring variations (e.g. polymorphisms), each with its own valid existence. This clone is substantially in agreement with the reference, but a complete review of all prevailing variants is recommended prior to use. More info
OTI Annotation:	This clone was engineered to express the complete ORF with an expression tag. Expression varies depending on the nature of the gene.
RefSeq:	NM_014960.5
RefSeq Size:	2785 bp
RefSeq ORF:	1578 bp
Locus ID:	22901
Domains:	Sulfatase
Protein Families:	Druggable Genome
Protein Pathways:	Lysosome
MW:	57.1 kDa
Gene Summary:	The protein encoded by this gene belongs to the sulfatase enzyme family. Sulfatases hydrolyze sulfate esters from sulfated steroids, carbohydrates, proteoglycans, and glycolipids. They are involved in hormone biosynthesis, modulation of cell signaling, and degradation of macromolecules. This protein displays arylsulfatase activity at acidic pH, as is typical of lysosomal sulfatases, and has been shown to localize in the lysosomes. Alternatively spliced transcript variants have been found for this gene. [provided by RefSeq, Jun 2012]

Product images:





Coomassie blue staining of purified ARSG protein (Cat# [TP301967]). The protein was produced from HEK293T cells transfected with ARSG cDNA clone (Cat# RC201967) using MegaTran 2.0 (Cat# [TT210002]).