

Product datasheet for **RC201966**

ARHGAP1 (NM_004308) Human Tagged ORF Clone

Product data:

Product Type:	Expression Plasmids
Product Name:	ARHGAP1 (NM_004308) Human Tagged ORF Clone
Tag:	Myc-DDK
Symbol:	ARHGAP1
Synonyms:	CDC42GAP; p50rhoGAP; RHOGAP; RHOGAP1
Mammalian Cell Selection:	Neomycin
Vector:	pCMV6-Entry (PS100001)
E. coli Selection:	Kanamycin (25 ug/mL)



[View online »](#)

ORF Nucleotide Sequence:

>RC201966 ORF sequence
 Red=Cloning site Blue=ORF Green=Tags(s)

TTTTGTAATACGACTCACTATAGGGCGGCCGGGAATTCGTCGACTGGATCCGGTACCGAGGAGATCTGCC
 GCC**CGCATCGCC**

ATGGATCCGCTCTCAGAGCTGCAGGATGATCTGACCTTGGATGACACCAGCGAGGCTCTGAACCAGCTGA
 AGCTGGCCTCCATCGATGAGAAGAACTGGCCCTCGGATGAAATGCCTGACTTCCCAAGTCAGATGACTC
 CAAAAGCAGCTCCCCGGAAGTTGTACACACCTGAAGTGGGATGACCCATACTATGACATCGCCCGCAC
 CAGATCGTGGAGGTGGCAGGAGATGACAAGTATGGGCGGAAGATCATTGTGTTTGTAGTGCCTGTGCAATGC
 CCCCCAGCCACCAGCTCGACCACAGCAAGCTCCTGGGGTACCTGAAGCACACCCTGGACCAGTACGTGGA
 GAGTGACTACACACTTCTGTATCTGCACCACGGCCTGACCAGCGACAACAAGCCCTCCCTCAGCTGGCTC
 CGTGATGCCTACCGGAGTTTGACCGAAGTACAAGAAGAATCAAGGCCTTGTACATCGTGCATCCAA
 CCATGTTTCATCAAACTCTGCTCATCTTCAAGCCCTCATCAGCTTCAAGTTCGGGCAGAAGATCTT
 CTATGTGAATTACCTGAGCGAGCTGAGCGAGCAGTGAAGCTGGAGCAGCTGGGGATCCCTCGCCAAGTG
 CTCAAATATGACGACTTCTGAAATCCACACAGAAGAGCCCGGACAGCCCAAGCCCATGCCCCAC
 GGCCCCCCTGCCAACCAGCAGTTTGGAGTCTCGCTGCAGCACCTCCAGGAGAAGAATCCAGAGCAGGA
 GCCCATCCCATTGTAAGTACTCAGGGAGACTGTTGCCTACTTACAGGCCACGCTCTCACCACCGAGGGCATC
 TTCCGGAGGTCCGCCAACCCCAAGTGGTCCGGGAAGTGCAGCAGAAGTACAACATGGGGTGCCTGTGG
 ATTTCCGACAGTACAATGAGCTGCACCTGCCAGCAGTATCCTCAAGACCTTCTCCGGGAGCTTCTCGA
 GCCCTGCTCACCTTTGACCTCTACCCCATGTGGTGGGCTTCTCAACATTGATGAAAGCCAGAGGGTG
 CCAGCGACACTGCAGGTCTCCAGACGCTGCCGAGGAGAACTACCAGGTGCTTCGTTTCTGACTGCTT
 TCCTGGTGCAGATTTCTGCACACAGTGACCAGACAAGATGACCAACACTAACCTGGCTGTTGTTTTCCGG
 CCCTAACCTGCTGTGGGCCAAGGATGCGGCCATCACCTCAAGGCCATTATCCCATCAACACCTTACC
 AAGTTCCTTCTGGATCACCAAGGGGAGCTGTTCCAAGCCCGACCCAGCGGGCTC

ACGCGTACGCGGCCGCTCGAGCAGAACTCATCTCAGAAGAGGATCTGGCAGCAAATGATATCCTGGATT
 ACAAGGATGACGACGATAAGGTTTAA

Protein Sequence:

>RC201966 protein sequence
 Red=Cloning site Green=Tags(s)

MDPLSELQDDLTDLDTSEALNQLKLASIDEKNWPSDEMPDFPKSDDSKSSPELVTHLKWDDPYDIARH
 QIVEVAGDDKYGRKIIIVFSACRMPPSHQLDHSKLLGYLKHTLDQYVESDYTLLYLHHGLTSDNKPSLSWL
 RDAYREFDRKYKNIKALYIVHPTMFIKTLILFKPLISFKFGQKIFYVNYLSELSEHVKLEQLGIPRQV
 LKYDDFLKSTQKSPATAPKMPRRPPLPNQQFGVSLQHLQEKNEQEPIPIVLRRETVAYLQAHALTTEGI
 FRRSANTQVVREVQQKYNMGLPVDFDQYNELHLPVILKTFRLRELPELLTFDLYPHVVGFLNIDESQRV
 PATLQVLQTLPEENYQVLRFLTAFLVQISAHSDQNKMTNTNLAVVFGPNLLWAKDAAITLKAINPINTFT
 KFLLDHQGELFSPDPSGL

TRTRPLEQKLISEEDLAANDILDYKDDDDKV

Chromatograms:

https://cdn.origene.com/chromatograms/mk6540_h04.zip

Restriction Sites:

Sgfl-Mlul

Cloning Scheme:


ACCN: NM_004308

ORF Size: 1317 bp

OTI Disclaimer: The molecular sequence of this clone aligns with the gene accession number as a point of reference only. However, individual transcript sequences of the same gene can differ through naturally occurring variations (e.g. polymorphisms), each with its own valid existence. This clone is substantially in agreement with the reference, but a complete review of all prevailing variants is recommended prior to use. [More info](#)

OTI Annotation: This clone was engineered to express the complete ORF with an expression tag. Expression varies depending on the nature of the gene.

Components: The ORF clone is ion-exchange column purified and shipped in a 2D barcoded Matrix tube containing 10ug of transfection-ready, dried plasmid DNA (reconstitute with 100 ul of water).

Reconstitution Method:

1. Centrifuge at 5,000xg for 5min.
2. Carefully open the tube and add 100ul of sterile water to dissolve the DNA.
3. Close the tube and incubate for 10 minutes at room temperature.
4. Briefly vortex the tube and then do a quick spin (less than 5000xg) to concentrate the liquid at the bottom.
5. Store the suspended plasmid at -20°C. The DNA is stable for at least one year from date of shipping when stored at -20°C.

RefSeq: [NM_004308.3](#)

RefSeq Size: 3460 bp

RefSeq ORF: 1320 bp

Locus ID: 392

UniProt ID: [Q07960](#)

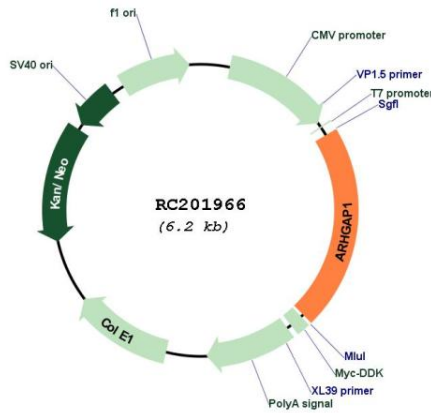
Cytogenetics: 11p11.2

Domains: RhoGAP, SEC14

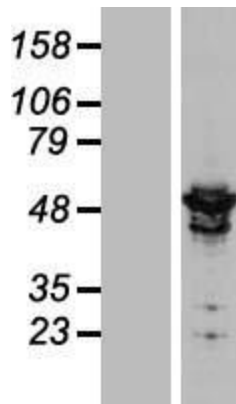
MW: 50.4 kDa

Gene Summary: This gene encodes a member of a large family of proteins that activate Rho-type guanosine triphosphate (GTP) metabolizing enzymes. The encoded protein contains a SRC homology 3 domain and interacts with Bcl-2-associated protein family members. [provided by RefSeq, Aug 2012]

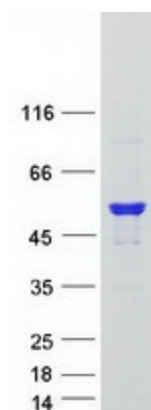
Product images:



Circular map for RC201966



Western blot validation of overexpression lysate (Cat# [LY418075]) using anti-DDK antibody (Cat# [TA50011-100]). Left: Cell lysates from untransfected HEK293T cells; Right: Cell lysates from HEK293T cells transfected with RC201966 using transfection reagent MegaTran 2.0 (Cat# [TT210002]).



Coomassie blue staining of purified ARHGAP1 protein (Cat# [TP301966]). The protein was produced from HEK293T cells transfected with ARHGAP1 cDNA clone (Cat# RC201966) using MegaTran 2.0 (Cat# [TT210002]).