

## Product datasheet for RC201965

### BCL2A1 (NM\_004049) Human Tagged ORF Clone

#### Product data:

**Product Type:** Expression Plasmids  
**Product Name:** BCL2A1 (NM\_004049) Human Tagged ORF Clone  
**Tag:** Myc-DDK  
**Symbol:** BCL2A1  
**Synonyms:** ACC-1; ACC-2; ACC1; ACC2; BCL2L5; BFL1; GRS; HBPA1  
**Mammalian Cell Selection:** Neomycin  
**Vector:** pCMV6-Entry (PS100001)  
**E. coli Selection:** Kanamycin (25 ug/mL)  
**ORF Nucleotide Sequence:** >RC201965 ORF sequence  
 Red=Cloning site Blue=ORF Green=Tags(s)

TTTGTAAACGACTCACTATAGGGCGCCGGGAATTCGTCGACTGGATCCGGTACCGAGGAGATCTGCC  
 GCCCGATCGCC

ATGACAGACTGTGAATTTGGATATATTTACAGGCTGGCTCAGGACTATCTGCAGTGCCTACAGATAC  
 CACAACCTGGATCAGGTCCAAGCAAACGTCAGAGTGTACAAAATGTTGCGTTCTCAGTCCAAAAAGA  
 AGTGGAAAAGAATCTGAAGTCATGCTTGGACAATGTTAATGTTGTGTCCTAGACTGCCAGAACACTA  
 TTCAACCAAGTGATGGAAAAGGAGTTTGAAGACGGCATCATAACTGGGAAGAATTGTAACCATATTTG  
 CATTTGAAGTATTCTCATCAAGAACTTCTACGACAGCAAATGCCCCGGATGTGGATACCTATAAGGA  
 GATTTTCATATTTGTTGCGGAGTTCATAATGAATAACACAGGAGAATGGATAAGGCAAACGGAGGCTGG  
 GAAAATGGCTTTGTAAAGAAGTTTGAACCTAAATCTGGCTGGATGACTTTTCTAGAAGTTACAGGAAAGA  
 TCTGTGAAATGCTATCTCTCTGAAGCAACTGT

ACGCGTACGCGGCCGCTCGAGCAGAACTCATCTCAGAAGAGGATCTGGCAGCAAATGATATCCTGGATT  
 ACAAGGATGACGACGATAAGGTTTAA

**Protein Sequence:** >RC201965 protein sequence  
 Red=Cloning site Green=Tags(s)

MTDCEFGYIYRLAQDYLCVLIQIPQPGSGPSKTSRVLQNVAFSVQKEVEKLNKSCLDNPNVSVSDARTL  
 FNQVMEKEFEDGIINWGRIVTIFAFEGILIKLLRQQIAPDVDTYKEISYFVAEFIMNNTGEWIRQNGGW  
 ENGFVKKFEPKSGWMTFLEVTGKICEMLSLLKQYC

TRTRPLEQKLISEEDLAANDILDYKDDDDKV

**Chromatograms:** [https://cdn.origene.com/chromatograms/mk6008\\_g02.zip](https://cdn.origene.com/chromatograms/mk6008_g02.zip)



[View online »](#)

Restriction Sites: SgfI-MluI

Cloning Scheme:



ACCN: NM\_004049

ORF Size: 525 bp

OTI Disclaimer: The molecular sequence of this clone aligns with the gene accession number as a point of reference only. However, individual transcript sequences of the same gene can differ through naturally occurring variations (e.g. polymorphisms), each with its own valid existence. This clone is substantially in agreement with the reference, but a complete review of all prevailing variants is recommended prior to use. [More info](#)

OTI Annotation: This clone was engineered to express the complete ORF with an expression tag. Expression varies depending on the nature of the gene.

Components: The ORF clone is ion-exchange column purified and shipped in a 2D barcoded Matrix tube containing 10ug of transfection-ready, dried plasmid DNA (reconstitute with 100 ul of water).

Reconstitution Method:

1. Centrifuge at 5,000xg for 5min.
2. Carefully open the tube and add 100ul of sterile water to dissolve the DNA.
3. Close the tube and incubate for 10 minutes at room temperature.
4. Briefly vortex the tube and then do a quick spin (less than 5000xg) to concentrate the liquid at the bottom.
5. Store the suspended plasmid at -20°C. The DNA is stable for at least one year from date of shipping when stored at -20°C.

RefSeq: [NM\\_004049.4](#)

RefSeq Size: 899 bp

RefSeq ORF: 528 bp

Locus ID: 597

UniProt ID: [Q16548](#)

**Cytogenetics:** 15q25.1

**Domains:** Bcl-2

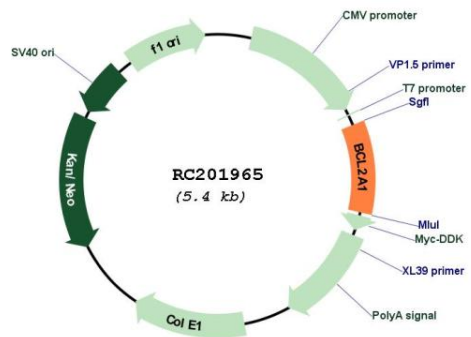
**Protein Families:** Druggable Genome

**Protein Pathways:** Metabolic pathways

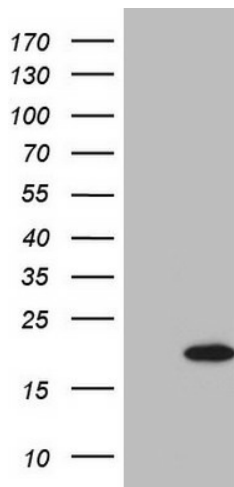
**MW:** 20.1 kDa

**Gene Summary:** This gene encodes a member of the BCL-2 protein family. The proteins of this family form hetero- or homodimers and act as anti- and pro-apoptotic regulators that are involved in a wide variety of cellular activities such as embryonic development, homeostasis and tumorigenesis. The protein encoded by this gene is able to reduce the release of pro-apoptotic cytochrome c from mitochondria and block caspase activation. This gene is a direct transcription target of NF-kappa B in response to inflammatory mediators, and is up-regulated by different extracellular signals, such as granulocyte-macrophage colony-stimulating factor (GM-CSF), CD40, phorbol ester and inflammatory cytokine TNF and IL-1, which suggests a cytoprotective function that is essential for lymphocyte activation as well as cell survival. Alternatively spliced transcript variants encoding different isoforms have been found for this gene. [provided by RefSeq, Jul 2008]

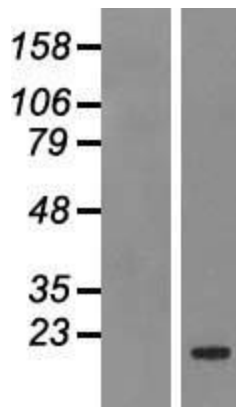
**Product images:**



Circular map for RC201965



HEK293T cells were transfected with the pCMV6-ENTRY control (Cat# [PS100001], Left lane) or pCMV6-ENTRY BCL2A1 (Cat# RC201965, Right lane) cDNA for 48 hrs and lysed. Equivalent amounts of cell lysates (5 ug per lane) were separated by SDS-PAGE and immunoblotted with anti-BCL2A1(Cat# [TA806463]). Positive lysates [LY418253] (100ug) and [LC418253] (20ug) can be purchased separately from OriGene.



Western blot validation of overexpression lysate (Cat# [LY418253]) using anti-DDK antibody (Cat# [TA50011-100]). Left: Cell lysates from untransfected HEK293T cells; Right: Cell lysates from HEK293T cells transfected with RC201965 using transfection reagent MegaTran 2.0 (Cat# [TT210002]).