

Product datasheet for RC201963

ITGB1BP1 (NM_004763) Human Tagged ORF Clone

Product data:

Product Type:	Expression Plasmids
Product Name:	ITGB1BP1 (NM_004763) Human Tagged ORF Clone
Tag:	Myc-DDK
Symbol:	ITGB1BP1
Synonyms:	ICAP-1A; ICAP-1alpha; ICAP-1B; ICAP1; ICAP1A; ICAP1B
Mammalian Cell Selection:	Neomycin
Vector:	pCMV6-Entry (PS100001)
E. coli Selection:	Kanamycin (25 ug/mL)
ORF Nucleotide Sequence:	>RC201963 ORF sequence Red=Cloning site Blue=ORF Green=Tags(s)

TTTTGTAATACGACTCACTATAGGGCGGCCGGAATTCGTCGACTGGATCCGGTACCGAGGAGATCTGCC
 GCCCGCATCGCC

ATGTTTCGCAAGGGCAAAAAACGACACAGTAGTAGCAGTTCCTCAAAGTAGCGAAATCAGTACTAAGAGCA
 AGTCTGTGGATTCTAGCCTTGGGGTCTTTCACGATCCAGCACTGTGGCCAGCCTCGACACAGATTCCAC
 CAAAAGCTCAGGACAAAGCAACAATAATTCAGATACCTGTGCAGAAATTCGAATAAAATATGTTGGTGCC
 ATTGAGAACTGAACTCTCCGAGGAAAAGGCCTTGAAGGGCCATTAGACCTGATAAATTATATAGACG
 TTGCCAGCAAGATGAAAGTTGCCTTTTGTTCCTCCGAGGAAGAATTTATTATGGGAGTTTCCAAGTA
 TGGCATAAAAGTATCAACATCAGATCAATATGATGTTTTGCACAGGCATGCTCTCTACTTAATAATCCGG
 ATGGTGTGTTACGATGACGGTCTGGGGTGGGAAAAAGCTTACTGGCTCTGAAGACCACAGATGCAAGCA
 ATGAGGAATACAGCCTGTGGGTTTATCAGTGCAACAGCCTGGAACAAGCACAAAGCCATTTGCAAGGTTTT
 ATCCACCGCTTTTGACTCTGTATTAACATCTGAGAAACCC

ACGCGTACGCGGCCGCTCGAGCAGAACTCATCTCAGAAGAGGATCTGGCAGCAAATGATATCCTGGATT
 ACAAGGATGACGACGATAAGGTTTAA

Protein Sequence:	>RC201963 protein sequence Red=Cloning site Green=Tags(s)
-------------------	--

MFRKGKKRHSSSSQSSEISTKSKSVDSLSGLSRSSSTVASLDTDSTKSSGQSNNSDTCAEFRIKYVGA
 IEKLKLESGKLEGLDLINIDVAQQDGKLPFVPPEEFIMGVSKYGIKVSTSDQYDVLHRHALYLIIR
 MVCYDDGLGVGKSLALKTTDASNEEYSLWVYQCNSLEQAQAICKVLSTAFDSVLTSEKP

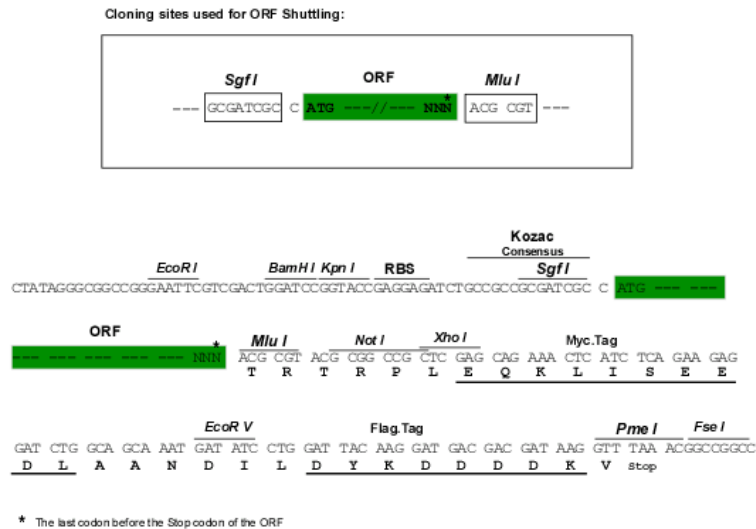
TRTRPLEQKLISEEDLAANDILDYKDDDDKV


[View online »](#)

Chromatograms: https://cdn.origene.com/chromatograms/mk6304_h09.zip

Restriction Sites: SgfI-MluI

Cloning Scheme:



ACCN: NM_004763

ORF Size: 600 bp

OTI Disclaimer: Due to the inherent nature of this plasmid, standard methods to replicate additional amounts of DNA in E. coli are highly likely to result in mutations and/or rearrangements. Therefore, OriGene does not guarantee the capability to replicate this plasmid DNA. Additional amounts of DNA can be purchased from OriGene with batch-specific, full-sequence verification at a reduced cost. Please contact our customer care team at custsupport@origene.com or by calling 301.340.3188 option 3 for pricing and delivery.

The molecular sequence of this clone aligns with the gene accession number as a point of reference only. However, individual transcript sequences of the same gene can differ through naturally occurring variations (e.g. polymorphisms), each with its own valid existence. This clone is substantially in agreement with the reference, but a complete review of all prevailing variants is recommended prior to use. [More info](#)

OTI Annotation: This clone was engineered to express the complete ORF with an expression tag. Expression varies depending on the nature of the gene.

Components: The ORF clone is ion-exchange column purified and shipped in a 2D barcoded Matrix tube containing 10ug of transfection-ready, dried plasmid DNA (reconstitute with 100 ul of water).

Reconstitution Method:

1. Centrifuge at 5,000xg for 5min.
2. Carefully open the tube and add 100ul of sterile water to dissolve the DNA.
3. Close the tube and incubate for 10 minutes at room temperature.
4. Briefly vortex the tube and then do a quick spin (less than 5000xg) to concentrate the liquid at the bottom.
5. Store the suspended plasmid at -20°C. The DNA is stable for at least one year from date of shipping when stored at -20°C.

Note: Plasmids are not sterile. For experiments where strict sterility is required, filtration with 0.22um filter is required.

RefSeq: [NM_004763.5](#)

RefSeq Size: 1930 bp

RefSeq ORF: 603 bp

Locus ID: 9270

UniProt ID: [O14713](#)

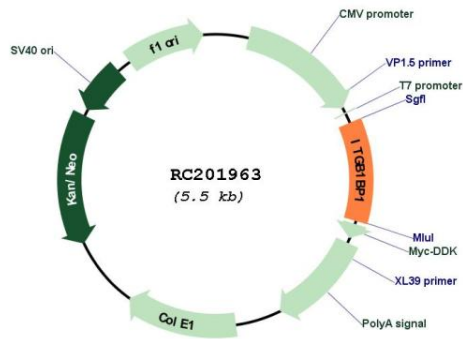
Cytogenetics: 2p25.1

Domains: PID

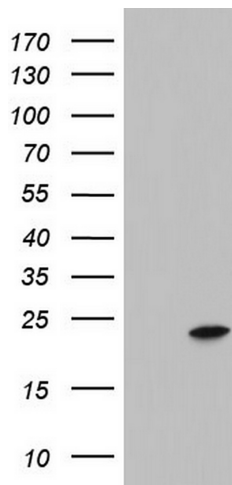
MW: 21.8 kDa

Gene Summary: The cytoplasmic domains of integrins are essential for cell adhesion. The protein encoded by this gene binds to the beta1 integrin cytoplasmic domain. The interaction between this protein and beta1 integrin is highly specific. Two isoforms of this protein are derived from alternatively spliced transcripts. The shorter form of this protein does not interact with the beta1 integrin cytoplasmic domain. The longer form is a phosphoprotein and the extent of its phosphorylation is regulated by the cell-matrix interaction, suggesting an important role of this protein during integrin-dependent cell adhesion. Several transcript variants, some protein-coding and some non-protein coding, have been found for this gene. [provided by RefSeq, Jan 2016]

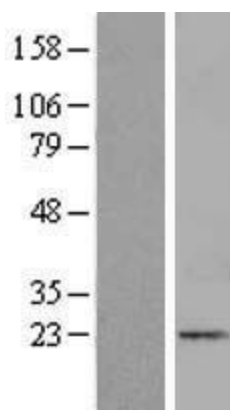
Product images:



Circular map for RC201963



HEK293T cells were transfected with the pCMV6-ENTRY control (Cat# [PS100001], Left lane) or pCMV6-ENTRY ITGB1BP1 (Cat# RC201963, Right lane) cDNA for 48 hrs and lysed. Equivalent amounts of cell lysates (5 ug per lane) were separated by SDS-PAGE and immunoblotted with anti-ITGB1BP1 (Cat# [TA803731]). Positive lysates [LY417776] (100ug) and [LC417776] (20ug) can be purchased separately from OriGene.



Western blot validation of overexpression lysate (Cat# [LY417776]) using anti-DDK antibody (Cat# [TA50011-100]). Left: Cell lysates from untransfected HEK293T cells; Right: Cell lysates from HEK293T cells transfected with RC201963 using transfection reagent MegaTran 2.0 (Cat# [TT210002]).