

## Product datasheet for **RC201962**

### CAVIN2 (NM\_004657) Human Tagged ORF Clone

#### Product data:

Product Type:	Expression Plasmids
Product Name:	CAVIN2 (NM_004657) Human Tagged ORF Clone
Tag:	Myc-DDK
Symbol:	CAVIN2
Synonyms:	cavin-2; PS-p68; SDPR; SDR
Mammalian Cell Selection:	Neomycin
Vector:	pCMV6-Entry (PS100001)
E. coli Selection:	Kanamycin (25 ug/mL)



[View online »](#)

**ORF Nucleotide Sequence:**

>RC201962 representing NM\_004657  
 Red=Cloning site Blue=ORF Green=Tags(s)

TTTTGTAATACGACTCACTATAGGGCGGCCGGAATTCGTCGACTGGATCCGGTACCGAGGAGATCTGCC  
 GCC**CGGATCGCC**

ATGGGAGAGGACGCTGCACAGGCCGAAAAGTTCACGACCCCTGGGTCTGACATGCGGCAGGAAAAGCCCT  
 CGAGCCCCAGCCGATGCCTTCTCCACACCAAGCCCCAGCCTGAACCTAGGGAACACAGAGGAGGCCAT  
 CCGGGACAACCTACAGGTGAACGCACTACGGTCTCACGCTCCTGGACAAGCTGGTGAACATGCTAGAC  
 GCTGTGCAGGAGAACCAGCAAGATGGAGCAGCGACAGATCAGTTTGGAGGGCTCCGTGAAGGGCATCC  
 AGAATGACCTACCAAGCTCTCAAGTACCAGGCTCCACCAGCAACACGGTGAAGCTGCTGGAGAA  
 GTCCCGCAAGGTGAGCGCCACACGCGCGGTCAAAGAGCGCATGGATAGGCAGTGCACAGGTGAAG  
 CGGCTGGAGAACAACCACGCCAGCTCCTCCGACGCAACCATTTCAAAGTCTCATCTCCAGGAGGAAA  
 ATGAGATCCCTGCCAGCGTGTGGTGAACAGCCCGTTCCGGTCCGTGGAAGGGAAGGAGGAGCTTCC  
 GGATGAAAACAAATCCCTGGAGGAAACCCTGCACACCGTGGACCTCCTCAGATGATGATTTGCCCCAC  
 GATGAGGAGGCCCTGGAAGACAGTGCCGAGGAAAAGGTGGAAGAAAGTAGGGCAGAGAAAATAAAAAGAT  
 CCAGCCTGAAGAAAGTGGATAGCCTCAAGAAAGCATTCTCGCCAGAACATCGAGAAAAAGATGAACAA  
 GCTGGGGACAAAGATCGTATCTGTAGAGAGGAGAGAGAAGATTAAGAAATCTCTCACGTCAAATCACCAG  
 AAAATATCCTCAGGAAAAAGCTCCCCCTCAAGGTTTCTCCCCTCACTTCGCGCGGAAGAAAGTCCGAG  
 AGGGAGAAAGCCATGCAGAAAATGAGACCAAGTGAAGACCTGCCTAGCAGTGAAGCAGATGCCAAATGA  
 CCAGGAAGAGGAGTCTTTGCAGAGGGTCAATCCGAAGCGTCCCTCGCCAGCGCTCTGGTGAAGGGGAA  
 ATTGCAGAGGAGGCTGCTGAGAAGGCGACTCCAGGGGGAGTAACTCGGGGATGGACAGCAACATCGACT  
 TGACTATTGTGGAAGATGAAGAGGAGGAGTCAAGTGGCCCTGGAACAGGCACAGAAGTACGCTATGAGGG  
 TAGCTACGCGCTAACATCCGAGGAGGCGGAGCGCTCCGATGGGGACCCCGTGCAGCCCGCGTGTCCAG  
 GTGCACCAGACCTCC

**ACGCGT**ACGCGGCCGCTCGAGCAGAAACTCATCTCAGAAGAGGATCTGGCAGCAAATGATATCCTGGATT  
 ACAAGGATGACGACGATAAGGTTTAA

**Protein Sequence:**

>RC201962 representing NM\_004657  
 Red=Cloning site Green=Tags(s)

MGEDAAQAEKFQHPGSDMRQEKPSSPMPSSSTPSPSLNLGNTEEAIRDNSQVNAVTVLTLDDKLVNMLD  
 AVQENQHKMEQRQISLEGSVKGIQNDLTKLSKYQASTSNTVSKLLEKSRKVSATRAVKERMDRQCAQVK  
 RLENNHAQLLRNHFVKLIFQEENEIPASVFKQPVSGAVEGKEELPDENKSLEETLHTVDLSSDDDLPH  
 DEEALEDSAEKVEESRAEKIKRSSLKVDLKKAFSRQNIKKMNKLGTKIVSVERREIKKSLTSNHQ  
 KISSGKSSPFKVSPLTFGRKKVREGESHAENETKSEDLPSSEQMPNDQEEESFAEGHSEASLASALVEGE  
 IAEEAAEKATSRGSNSGMDSNIDLTIVEDEEEESVALEQAQKVRVEGSYALTSEEASRSDGDPVQPAVLQ  
 VHQTS

**TR**TRPLEQKLISEEDLAANDILDYKDDDDKV

**Chromatograms:**

[https://cdn.origene.com/chromatograms/mk8077\\_b05.zip](https://cdn.origene.com/chromatograms/mk8077_b05.zip)

**Restriction Sites:**

Sgfl-Mlul

**Cloning Scheme:**


**ACCN:** NM\_004657

**ORF Size:** 1275 bp

**OTI Disclaimer:** The molecular sequence of this clone aligns with the gene accession number as a point of reference only. However, individual transcript sequences of the same gene can differ through naturally occurring variations (e.g. polymorphisms), each with its own valid existence. This clone is substantially in agreement with the reference, but a complete review of all prevailing variants is recommended prior to use. [More info](#)

**OTI Annotation:** This clone was engineered to express the complete ORF with an expression tag. Expression varies depending on the nature of the gene.

**Components:** The ORF clone is ion-exchange column purified and shipped in a 2D barcoded Matrix tube containing 10ug of transfection-ready, dried plasmid DNA (reconstitute with 100 ul of water).

- Reconstitution Method:**
1. Centrifuge at 5,000xg for 5min.
  2. Carefully open the tube and add 100ul of sterile water to dissolve the DNA.
  3. Close the tube and incubate for 10 minutes at room temperature.
  4. Briefly vortex the tube and then do a quick spin (less than 5000xg) to concentrate the liquid at the bottom.
  5. Store the suspended plasmid at -20°C. The DNA is stable for at least one year from date of shipping when stored at -20°C.

**RefSeq:** [NM\\_004657.6](#)

**RefSeq Size:** 3234 bp

**RefSeq ORF:** 1278 bp

**Locus ID:** 8436

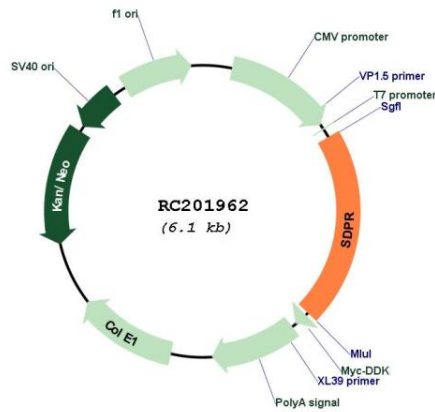
**UniProt ID:** [O95810](#)

**Cytogenetics:** 2q32.3

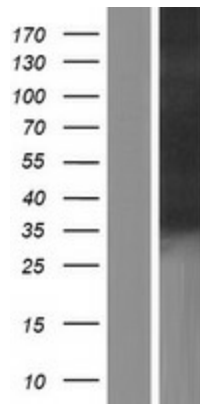
**MW:** 47 kDa

**Gene Summary:** This gene encodes a calcium-independent phospholipid-binding protein whose expression increases in serum-starved cells. This protein is a substrate for protein kinase C (PKC) phosphorylation and recruits polymerase I and transcript release factor (PTRF) to caveolae. Removal of this protein causes caveolae loss and its over-expression results in caveolae deformation and membrane tubulation.[provided by RefSeq, Sep 2009]

**Product images:**



Circular map for RC201962



Western blot validation of overexpression lysate (Cat# [LY417841]) using anti-DDK antibody (Cat# [TA50011-100]). Left: Cell lysates from untransfected HEK293T cells; Right: Cell lysates from HEK293T cells transfected with RC201962 using transfection reagent MegaTran 2.0 (Cat# [TT210002]).