

Product datasheet for RC201948

MEOX 2 (MEOX2) (NM_005924) Human Tagged ORF Clone

Product data:

Product Type:	Expression Plasmids
Product Name:	MEOX 2 (MEOX2) (NM_005924) Human Tagged ORF Clone
Tag:	Myc-DDK
Symbol:	MEOX 2
Synonyms:	GAX; MOX2
Mammalian Cell Selection:	Neomycin
Vector:	pCMV6-Entry (PS100001)
E. coli Selection:	Kanamycin (25 ug/mL)
ORF Nucleotide Sequence:	>RC201948 ORF sequence Red=Cloning site Blue=ORF Green=Tags(s)

TTTTGTAATACGACTCACTATAGGGCGCCGGGAATTCGTCGACTGGATCCGGTACCGAGGAGATCTGCC
GCC**CGATCGCC**

ATGGAACACCCGCTCTTTGGCTGCCTGCGCAGCCCTCACGCCACGGCGCAAGGCTTGACCCGTTCTCCC
AATCCTCTCTCGCCCTCCATGGAAGATCTGACCATATGTCTTACCCCGAGCTCTCTACTTCTTCCTCATC
TTGCATAATCGCGGGATACCCCAACGAAGAGGGCATGTTTGCAGCCAGCATCACAGGGGGCACCACCAC
CACCACCACCACCACCATCACCACCATCAGCAGCAGCAGCACCAGGCTCTGCAAACCAACTGGCACCTCC
CGCAGATGTCTTCCCACCGAGTGCGGCTCGGCACAGCCTCTGCCTCCAGCCGACTCTGGAGGGCCCCC
AGAGTTGGGGAGCAGCCCGCCCTGTGTCTCCAACCTTCCAGCTTGGGCTCCAGCACCCCGACTGGG
GCCCGCTGCGCGCCGGGGACTACGGCCGCCAGGCACTGTACCTGCGGAGGCGGAGAAGCGAAGCGGCG
GCAAGAGGAAAAGCGACAGCTCAGACTCCCAGGAAGAAAATTACAAGTCAGAAGTCAACAGCAAACCCAG
GAAAGAAAGGACAGCATTTACCAAAGAGCAAATCAGAGAACTTGAAGCAGAATTTGCCATCATAATTAT
CTCACCAGACTGAGGCGATACGAGATAGCAGTGAATCTGGATCTCACTGAAAGACAGGTGAAAGTCTGGT
TCCAAAACAGGCGGATGAAGTGAAGAGGGTAAAGGGTGGACAGCAAGGAGCTGCGGCTCGGGAAAAGGA
ACTGGTGAATGTAAAAAGGGAACACTTCTCCCATCAGAGCTGTGGGAATTGGTGCAGCCACCCCTCCAG
CAAACAGGGGACTCTATAGCAAATGAAGACAGTCACGACAGTGACCACAGCTCAGAGCATGCGCACTTA

ACGCGTACGCGGCCGCTCGAGCAGAAACTCATCTCAGAAGAGGATCTGGCAGCAAATGATATCCTGGATT
ACAAGGATGACGACGATAAGGTTTAA



[View online »](#)

Protein Sequence: >RC201948 protein sequence
Red=Cloning site Green=Tags(s)

MEHPLFGCLRSPHATAQGLHPFSQSSLALHGRSDHMSYPELSTSSSSCIAGYPNEEGMFASQHRGHHH
 HHHHHHHHHQQQHQALQTNWHLPMSSPPSAARHSLCLQPDSSGGPELGSSPPVLCSSSSSLGSSTPTG
 AACAPGDYGRQALSPAIAEKRSQGGKRSKSDSDSQEGNYKSEVNSKPRKERTAFATKEQIRELEAEFAHHNY
 LTRLRRYEIAVNLDLTERQYKVFQNRMRKWKRVKGGQQGAAAREKELVNVKKGTLPLSELGIGAATLQ
 QTGDSIANEDSHSDHSEHAHL

TRTRPLEQKLISEEDLAANDILDYKDDDDKV

Chromatograms: https://cdn.origene.com/chromatograms/mk6012_g12.zip

Restriction Sites: SgfI-MluI

Cloning Scheme:



ACCN: NM_005924

ORF Size: 1698 bp

OTI Disclaimer: The molecular sequence of this clone aligns with the gene accession number as a point of reference only. However, individual transcript sequences of the same gene can differ through naturally occurring variations (e.g. polymorphisms), each with its own valid existence. This clone is substantially in agreement with the reference, but a complete review of all prevailing variants is recommended prior to use. [More info](#)

OTI Annotation: This clone was engineered to express the complete ORF with an expression tag. Expression varies depending on the nature of the gene.

Components: The ORF clone is ion-exchange column purified and shipped in a 2D barcoded Matrix tube containing 10ug of transfection-ready, dried plasmid DNA (reconstitute with 100 ul of water).

Reconstitution Method:

1. Centrifuge at 5,000xg for 5min.
2. Carefully open the tube and add 100ul of sterile water to dissolve the DNA.
3. Close the tube and incubate for 10 minutes at room temperature.
4. Briefly vortex the tube and then do a quick spin (less than 5000xg) to concentrate the liquid at the bottom.
5. Store the suspended plasmid at -20°C. The DNA is stable for at least one year from date of shipping when stored at -20°C.

RefSeq: [NM_005924.3](#), [NP_005915.1](#)

RefSeq Size: 2383 bp

RefSeq ORF: 915 bp

Locus ID: 4223

UniProt ID: [P50222](#)

Cytogenetics: 7p21.2

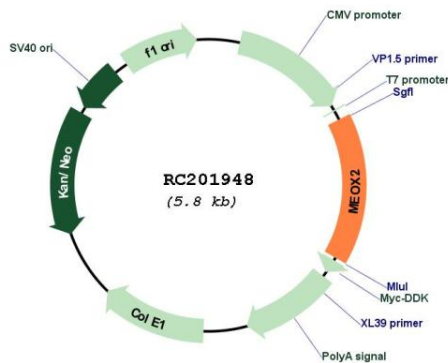
Domains: homeobox

Protein Families: Transcription Factors

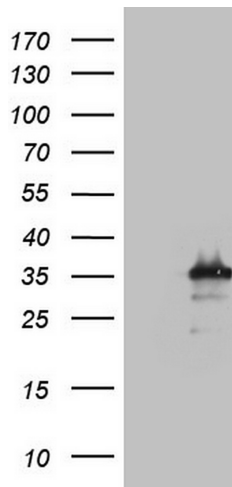
MW: 33.5 kDa

Gene Summary: This gene encodes a member of a subfamily of non-clustered, diverged, antennapedia-like homeobox-containing genes. The encoded protein may play a role in the regulation of vertebrate limb myogenesis. Mutations in the related mouse protein may be associated with craniofacial and/or skeletal abnormalities, in addition to neurovascular dysfunction observed in Alzheimer's disease. [provided by RefSeq, Jul 2008]

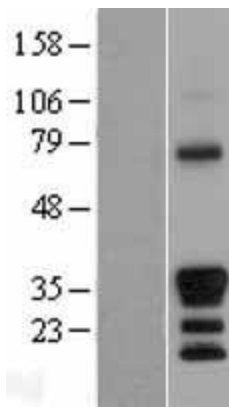
Product images:



Circular map for RC201948



HEK293T cells were transfected with the pCMV6-ENTRY control (Cat# [PS100001], Left lane) or pCMV6-ENTRY MEOX2 (Cat# RC201948, Right lane) cDNA for 48 hrs and lysed. Equivalent amounts of cell lysates (5 ug per lane) were separated by SDS-PAGE and immunoblotted with anti-MEOX2(Cat# [TA805639]). Positive lysates [LY401795] (100ug) and [LC401795] (20ug) can be purchased separately from OriGene.



Western blot validation of overexpression lysate (Cat# [LY401795]) using anti-DDK antibody (Cat# [TA50011-100]). Left: Cell lysates from untransfected HEK293T cells; Right: Cell lysates from HEK293T cells transfected with RC201948 using transfection reagent MegaTran 2.0 (Cat# [TT210002]).