

## Product datasheet for RC201947

### SSBP2 (NM\_012446) Human Tagged ORF Clone

#### Product data:

Product Type:	Expression Plasmids
Product Name:	SSBP2 (NM_012446) Human Tagged ORF Clone
Tag:	Myc-DDK
Symbol:	SSBP2
Synonyms:	HSPC116; SOSS-B2
Mammalian Cell Selection:	Neomycin
Vector:	pCMV6-Entry (PS100001)
E. coli Selection:	Kanamycin (25 ug/mL)
ORF Nucleotide Sequence:	>RC201947 ORF sequence Red=Cloning site Blue=ORF Green=Tags(s)

TTTTGTAATACGACTCACTATAGGGCGGCCGGAATTCGTCGACTGGATCCGGTACCGAGGAGATCTGCC  
GCC**CGATCGCC**

ATGTACGGCAAAGGCAAGAGTAACAGCAGCGCCGTCCCGTCCGACAGCCAGGCCCGGAGAAGTTAGCAC  
TCTACGTATATGAATATCTGCTCCATGTAGGAGCTCAGAAATCAGCTCAAACATTTTTATCAGAGATAAG  
ATGGGAAAAAACATCACATTGGGGGAACCACCAGGATCTTACATTCTGGTGGTGTGATTTTGGGAT  
CTCTACTGTGCAGCTCCAGAGAGACGTGAAACATGTGAACACTCAAGTGAAGCAAAGCCTTCCATGATT  
ACAGTGTGCAGCAGCTCCAGTCCAGTGTAGGAAACATCCCCAGGAGATGGCATGCCAGTAGGTCC  
TGTACCACCAGGGTTCTTTCAGCCTTTTATGTCACCTCGGTACCCTGGAGGTCCAAGGCCCCATTGAGG  
ATACCTAATCAGGCACCTGGAGGTGTCCAGGAAGTCAGCCATTACTCCCCAGTGAATGGATCCAACCT  
GACAACAAGGACATCAAATATGGGTGGGCAATGCAGAGAATGACTCCTCCAAGAGGAATGGTGCCTT  
AGGACCACAGAATATGGAGGTGCAATGAGACCCCACTGAATGCTTTAGGTGGCCCTGGAATGCCTGGA  
ATGAACATGGGTCCAGGTGGTGGTAGACCTGGCCAAACCAACAAATGCCAATTAATACCATACTCT  
CAGCATCTCTGGGAATTATGTAGTCTCCAGGAGGTGGAGGCCACCAGGAACACCCATCATGCCTAG  
TCCAGCAGATTAACCAACTCTGGTGATAACATGTATACTTTAATGAATGCAGTACCTCTGGACCTAAC  
AGACCTAATTTTCCAATGGTCTGGGTGAGTGGTCCCATGGTGGATTAGGAGGAATGGAGTCACATC  
ACATGAATGGCTCTTAGGCTCAGGAGATATGGACAGTATTTCCAAGAATTCTCCAATAATATGAGCCT  
GAGTAATCAACCGGCACTCCAAGGGATGATGGCGAAATGGGGGAAATTTCTTAATCCTTTTCAGAGT  
GAGAGTTACTCCCTAGCATGACAATGAGCGTG

**ACGCGT**ACGCGGCCGCTCGAGCAGAACTCATCTCAGAAGAGGATCTGGCAGCAAATGATATCCTGGATT  
ACAAGGATGACGACGATAAGGTTAA



[View online »](#)

**Protein Sequence:** >RC201947 protein sequence  
Red=Cloning site Green=Tags(s)

MYGKGKSNSSAVPSDSQAREKLALYVVEYLLHVGAQKSAQTFLSEIRWEKNITLGEPPGFLHSSWCVFWD  
 LYCAAPERRETCEHSSEAKAFHDYSAAAAPSPVLGNIPPGDGMPPVGPVPPGFFQPFMSPRYPGGPRPPLR  
 IPNQALGGVPGSQPLLP SGM DPT RQQGHPNMGGPMQRMTPPRGMVPLGPQNYGGAMRPLNALGGPGMPG  
 MNMGPGGGRPWPNPNTNANSIPYSSASPGNYVGGPPGGGGPPGTPIMPSPADSTNSGDNMYTLMNAVPPGPN  
 RPNFPMGPGSDGPMGGLGGMESHMNGSLGSGDMDSISKNSPNNMSLSNQPGTPRDDGEMGGNFLNPFQS  
 ESYSPSMTMSV

TRTRPLEQKLISEEDLAANDILDYKDDDDKV

**Chromatograms:** [https://cdn.origene.com/chromatograms/mk6130\\_h03.zip](https://cdn.origene.com/chromatograms/mk6130_h03.zip)

**Restriction Sites:** SgfI-MluI

**Cloning Scheme:**



**ACCN:** NM\_012446

**ORF Size:** 1083 bp

**OTI Disclaimer:** The molecular sequence of this clone aligns with the gene accession number as a point of reference only. However, individual transcript sequences of the same gene can differ through naturally occurring variations (e.g. polymorphisms), each with its own valid existence. This clone is substantially in agreement with the reference, but a complete review of all prevailing variants is recommended prior to use. [More info](#)

**OTI Annotation:** This clone was engineered to express the complete ORF with an expression tag. Expression varies depending on the nature of the gene.

**Components:** The ORF clone is ion-exchange column purified and shipped in a 2D barcoded Matrix tube containing 10ug of transfection-ready, dried plasmid DNA (reconstitute with 100 ul of water).

**Reconstitution Method:**

1. Centrifuge at 5,000xg for 5min.
2. Carefully open the tube and add 100ul of sterile water to dissolve the DNA.
3. Close the tube and incubate for 10 minutes at room temperature.
4. Briefly vortex the tube and then do a quick spin (less than 5000xg) to concentrate the liquid at the bottom.
5. Store the suspended plasmid at -20°C. The DNA is stable for at least one year from date of shipping when stored at -20°C.

**RefSeq:** [NM\\_012446.4](#)

**RefSeq Size:** 4441 bp

**RefSeq ORF:** 1086 bp

**Locus ID:** 23635

**UniProt ID:** [P81877](#)

**Cytogenetics:** 5q14.1

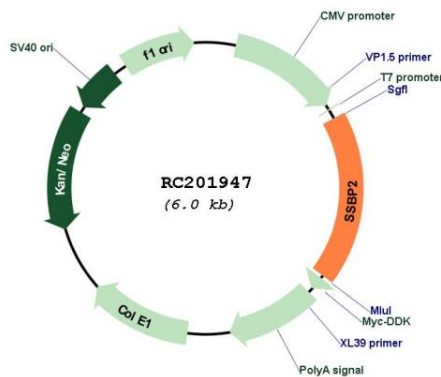
**Domains:** LisH, SSDP

**Protein Families:** Transcription Factors

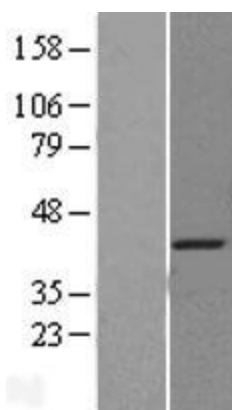
**MW:** 37.8 kDa

**Gene Summary:** This gene encodes a subunit of a protein complex that interacts with single-stranded DNA and is involved in the DNA damage response and maintenance of genome stability. The encoded protein may also play a role in telomere repair. A variant of this gene may be associated with survival in human glioblastoma patients. [provided by RefSeq, Sep 2016]

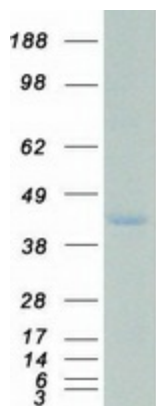
### Product images:



Circular map for RC201947



Western blot validation of overexpression lysate (Cat# [LY402214]) using anti-DDK antibody (Cat# [TA50011-100]). Left: Cell lysates from untransfected HEK293T cells; Right: Cell lysates from HEK293T cells transfected with RC201947 using transfection reagent MegaTran 2.0 (Cat# [TT210002]).



Coomassie blue staining of purified SSBP2 protein (Cat# [TP301947]). The protein was produced from HEK293T cells transfected with SSBP2 cDNA clone (Cat# RC201947) using MegaTran 2.0 (Cat# [TT210002]).