

Product datasheet for **RC201944**

TRIM38 (NM_006355) Human Tagged ORF Clone

Product data:

| | |
|---------------------------|---|
| Product Type: | Expression Plasmids |
| Product Name: | TRIM38 (NM_006355) Human Tagged ORF Clone |
| Tag: | Myc-DDK |
| Symbol: | TRIM38 |
| Synonyms: | RNF15; RORET |
| Mammalian Cell Selection: | Neomycin |
| Vector: | pCMV6-Entry (PS100001) |
| E. coli Selection: | Kanamycin (25 ug/mL) |



[View online »](#)

ORF Nucleotide Sequence:

>RC201944 ORF sequence
 Red=Cloning site Blue=ORF Green=Tags(s)

TTTTGTAATACGACTCACTATAGGGCGGCCGGGAATTCGTCGACTGGATCCGGTACCGAGGAGATCTGCC
 GCC**GCGATCGCC**

ATGGCCTCAACCACCAGCACCAAGAAGATGATGGAGGAAGCCACCTGCTCCATCTGCCTGAGCCTGATCA
 CGAACCCAGTAAGCATCAACTGTGGACACAGCTACTGCCACTTGTGTATAACAGACTTCTTTAAAAACCC
 AAGCCAAAAGCAACTGAGGCAGGAGACATTCTGCTGTCCCCAGTGTGGGCTCCATTTCATATGGATAGC
 CTCGACCCAACAAGCAGCTGGGAAGCCTCATTGAAGCCCTCAAAGAGACGGATCAAGAAATGTCATGTG
 AGGAACACGGAGAGCAGTTCACCTGTTCTGCGAAGACGAGGGGCAGCTCATCTGCTGGCGCTGTGAGCG
 GGCACCACAGCACAAAGGGCACACCACAGCTCTTGTGAAGACGTATGCCAGGGCTACAAGGAAAAGCTC
 CAGAAAGCTGTGACAAAAGTGAAGCAACTTGAAGACAGATGTACGGAGCAGAAGCTGCCACAGCAATGC
 GAATAACTAAATGAAAAGAGAAGGTACAGATTCAGAGACAAAAATCCGGTCTGACTTTAAGAATCTCCA
 GTGTTTCTACATGAGGAAGAGAAGTCTTATCTCTGGAGGCTGGAGAAAGAAGAACAACAGACTCTGAGT
 AGACTGAGGGACTATGAGGCTGGTCTGGGGCTGAAGAGCAATGAACTCAAGAGCCACATCCTGGAAGTGG
 AGGAAAAATGTCAGGGCTCAGCCAGAAAATGCTGCAGAATGTGAATGACACTTTGAGCAGGAGTTGGGC
 TGTGAAGCTGGAACATCAGAGGCTGTCTCCTTGGAACTTCATACTATGTGCAATGTTTCCAAGCTTTAC
 TTCGATGTGAAGAAAATGTTAAGGAGTCATCAAGTTAGTGTGACTCTGGATCCAGATACAGCTCATCAGC
 AACTAATCTCTCTGAGGATCGGAGACAAGTACTCGTGGATACACCCAGGAGAAATCAGGACACATCTTC
 CAGGAGATTTACTGCCTTCCCCTGTGTCTTGGGTTGTGAAGGCTTACCTCAGGAAGACGTTACTTTGAA
 GTGGATGTTGGCAAGGAACCGGATGGGATTTAGGAGTTTGTATGAAAAATGTGCAGAGGGGCAGCTGGCA
 TGAAGCAAGAGCCTCAGTCTGGATTCTGGACCCTCAGGCTGTGCAAAAAGAAAGGCTATGTAGCACTTAC
 TTCTCCCCAACTTCCCTTCATCTGCATGAGCAGCCCTGCTTGTGGGAATTTTTCTGGACTATGAGGCC
 GGAGTTGTATCCTTTTATAACGGGAATACTGGCTGCCACATCTTTACTTTCCCGAAGGCTTCTTCTCTG
 TACTCTCGGCCCTATTTCCAGGTTTATCAATATTCTCCTTTGTTTCTGCCTCCCCAGGTGAC

ACGCGTACGCGGCCGCTCGAGCAGAAACTCATCTCAGAAGAGGATCTGGCAGCAATGATATCCTGGATT
 ACAAGGATGACGACGATAAGGTTTAA

Protein Sequence:

>RC201944 protein sequence
 Red=Cloning site Green=Tags(s)

MASTTSTKMMEEATCSICLSLITNPVINCGHSYCHLCITDFFKNPSQKQLRQETFCCPQCRAPFHMS
 LRPNKQLGSLIEALKETDQEMSCEEHGEQFHLFCEDEGQLICWRCERAPQHKGHTTALVEDVCQGYKEKL
 QKAVTKLKLQLEDRCTEQKLSTAMRITKWKEKVQIQRQKIRSDFKNLQCFLEHEEKSYLWRLEKEEQTLS
 RLRDYEAGLGLKSNELKSHILELEEKCCQSAQKLLQNVNDLRSWAVKLETSEAVSLELHTMCNVSKLY
 FDVKMLRSHQVSVTLDPDTAHHELILSEDRRQVTRGYTQENQDTSSRRFTAFPCVLGCEGFTSGRRYFE
 YDVGEGTGWDLGVCMENVQRGTGMKQEPQSGFWTLRLCKKKGYVALTSPPTSLHLHEQPLLVGIFLDYEA
 GVVSFYNGNTGCHIFTFPKASFSDTLRPYFQVYQYSPLFLPPPGD

TRTRPLEQKLISEEDLAANDILDYKDDDDKV

Chromatograms:

https://cdn.origene.com/chromatograms/mk6013_f06.zip

Restriction Sites:

Sgfl-Mlul

Cloning Scheme:


ACCN: NM_006355

ORF Size: 1395 bp

OTI Disclaimer: The molecular sequence of this clone aligns with the gene accession number as a point of reference only. However, individual transcript sequences of the same gene can differ through naturally occurring variations (e.g. polymorphisms), each with its own valid existence. This clone is substantially in agreement with the reference, but a complete review of all prevailing variants is recommended prior to use. [More info](#)

OTI Annotation: This clone was engineered to express the complete ORF with an expression tag. Expression varies depending on the nature of the gene.

Components: The ORF clone is ion-exchange column purified and shipped in a 2D barcoded Matrix tube containing 10ug of transfection-ready, dried plasmid DNA (reconstitute with 100 ul of water).

Reconstitution Method:

1. Centrifuge at 5,000xg for 5min.
2. Carefully open the tube and add 100ul of sterile water to dissolve the DNA.
3. Close the tube and incubate for 10 minutes at room temperature.
4. Briefly vortex the tube and then do a quick spin (less than 5000xg) to concentrate the liquid at the bottom.
5. Store the suspended plasmid at -20°C. The DNA is stable for at least one year from date of shipping when stored at -20°C.

RefSeq: [NM_006355.5](#)

RefSeq Size: 5629 bp

RefSeq ORF: 1398 bp

Locus ID: 10475

UniProt ID: [O00635](#)

Cytogenetics: 6p22.2

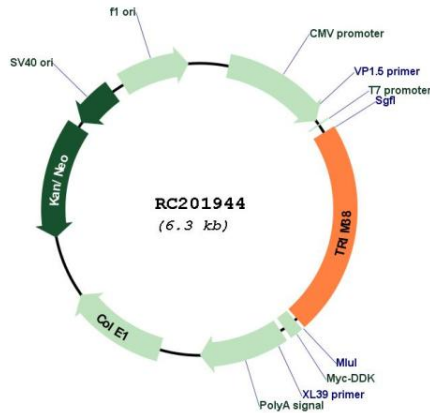
Domains: zf-B_box, RING, SPRY, PRY

Protein Families: Druggable Genome

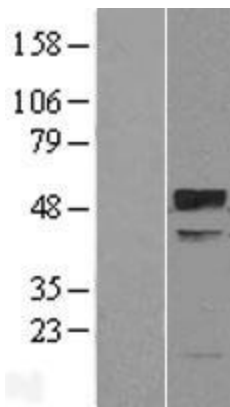
MW: 53.4 kDa

Gene Summary: This gene encodes a member of the tripartite motif (TRIM) family. The encoded protein contains a RING-type zinc finger, B box-type zinc finger and SPRY domain. The function of this protein has not been identified. A pseudogene of this gene is located on the long arm of chromosome 4. [provided by RefSeq, Jul 2012]

Product images:



Circular map for RC201944



Western blot validation of overexpression lysate (Cat# [LY401912]) using anti-DDK antibody (Cat# [TA50011-100]). Left: Cell lysates from untransfected HEK293T cells; Right: Cell lysates from HEK293T cells transfected with RC201944 using transfection reagent MegaTran 2.0 (Cat# [TT210002]).