

## Product datasheet for RC201943

### TMEM184B (NM\_012264) Human Tagged ORF Clone

#### Product data:

Product Type:	Expression Plasmids
Product Name:	TMEM184B (NM_012264) Human Tagged ORF Clone
Tag:	Myc-DDK
Symbol:	TMEM184B
Synonyms:	C22orf5; FM08; HS5O6A; HSPC256
Mammalian Cell Selection:	Neomycin
Vector:	pCMV6-Entry (PS100001)
E. coli Selection:	Kanamycin (25 ug/mL)
ORF Nucleotide Sequence:	>RC201943 ORF sequence Red=Cloning site Blue=ORF Green=Tags(s)

TTTTGTAATACGACTCACTATAGGGCGCCGGGAATTCGTCGACTGGATCCGGTACCGAGGAGATCTGCC  
GCC**CGATCGCC**

ATGACAGTGAGGGGGGATGTGCTGGCCCCGGATCCAGCGTCGCCACGACCGCAGCAGCCTCGCCCAGCG  
TCTCCGTGATCCCCGAGGGCAGCCCCACTGCCATGGAGCAGCCTGTGTTCTGATGACAACCTGCCGCTCA  
GGCCATCTCTGGTTCTTCGTGTGGACGGCCCTGCTCATCACATGCCACCAGATCTACATGCACCTGCGC  
TGCTACAGCTGCCCAACGAGCAGCGCTACATCGTGCATCCTTTCATCGTCCCATCTACGCCCTTTG  
ACTCCTGGCTCAGCCTCCTTCTTCCACCAACGACCAGTACTACGTGTACTTCGGCACCGTCCGCGACTG  
CTATGAGGCCCTGGTTCATCTATAATTTCCCTGAGCCTGTGCTATGAGTACCTAGGAGGAGAAAGTTCCATC  
ATGTCCGAGATCAGAGGAAAACCCATTGAGTCCAGCTGTATGTATGGCACCTGCTGCCTCTGGGAAAGA  
CTTATTCATCGGATTTCTGAGGTTCTGCAAAACAGGCCACCCTGCAGTTCGTGTGGTGAAGCCACTCAT  
GGCGGTGACACTGTGGTCTCCAGGCCTTCGGCAAGTACCGGGATGGGGACTTTGACGTACCAGTGGC  
TACCTCTACGTGACCATCATCTACAACATCTCCGTGAGCCTGGCCCTCTACGCCCTTCTCTTCTACT  
TCGCCACCGGGAGCTGCTCAGCCCCTACAGCCCCGTCTCAAGTCTTTCATGGTCAAGTCCGTCATCTT  
TCTTTCTTCTGGCAAGGCATGCTCCTGGCCATCCTGGAGAAGTGTGGGGCCATCCCCAAATCCACTCG  
GCCCGGTGTGGTGGCGAGGGCACCGTGGCTGCCGGTACCAGGACTTCATCATCTGTGTGGAGATGT  
TCTTTGCAGCCCTGGCCCTGCGGCACGCCTTACCTACAAGTCTATGCTGACAAGAGGCTGGACGCACA  
AGGCCGCTGTGCCCCATGAAGAGCATCTCCAGCAGCCTCAAGGAGACCATGAACCCGCACGACATCGTG  
CAGGACGCCATCCACAACCTTCTCACCTGCCTACCAGCAGTACACGCAGCAGTCCACCCTGGAGCCTGGGC  
CCACCTGGCGTGGTGGCGCCACGGCCTCTCCCGTCCCACAGCCTCAGTGGCGCCCGGACAACGAGAA  
GACTCTCTGCTCAGCTCTGATGATGAATTC

**ACGCGT**ACGCGGCCGCTCGAGCAGAAACTCATCTCAGAAGAGGATCTGGCAGCAAATGATATCCTGGATT  
ACAAGGATGACGACGATAAGGTTTAA



[View online >](#)

**Protein Sequence:** >RC201943 protein sequence  
Red=Cloning site Green=Tags(s)

MTVRGDVLAPDPASPTTAAASPSVSVIPEGSPTAMEQPVFLMTTAAQAISGFFVWTALLITCHQIYMHLR  
 CYSCPNEQRYIVRILFIVPIYAFDSWLSLLFFFTNDQYYVYFGTVRDCYEALVIYNFLSLCYEYLGGESSI  
 MSEIRGKPIESSCMYGTCCCLWGKTYSIGFLRFCKQATLQFCVVKPLMAVSTVVLQAFGKYRDGDFDVTSG  
 YLYVVTIIYNISVSLALYALFLFYFATRELLSPYSPVLKFFMVKSVIFLSFWQGMLLAILEKCGAIPKIH  
 ARVSVGEGTVAAGYQDFIICVEMFFAALALRHAFYKYVYADKRLDAQGRCAPMKSISSSLKETMNP  
 HDIVQDAIHNFSPAYQQYTQQSTLEPGPTWRGGAGHLSRSHSLSGARDNEKTLSSDDEF

TRTRPLEQKLISEEDLAANDILDYKDDDDKV

**Chromatograms:** [https://cdn.origene.com/chromatograms/mk6001\\_f09.zip](https://cdn.origene.com/chromatograms/mk6001_f09.zip)

**Restriction Sites:** SgfI-MluI

**Cloning Scheme:**



\* The last codon before the Stop codon of the ORF

**ACCN:** NM\_012264

**ORF Size:** 1221 bp

**OTI Disclaimer:** The molecular sequence of this clone aligns with the gene accession number as a point of reference only. However, individual transcript sequences of the same gene can differ through naturally occurring variations (e.g. polymorphisms), each with its own valid existence. This clone is substantially in agreement with the reference, but a complete review of all prevailing variants is recommended prior to use. [More info](#)

**OTI Annotation:** This clone was engineered to express the complete ORF with an expression tag. Expression varies depending on the nature of the gene.

**Components:** The ORF clone is ion-exchange column purified and shipped in a 2D barcoded Matrix tube containing 10ug of transfection-ready, dried plasmid DNA (reconstitute with 100 ul of water).

**Reconstitution Method:**

1. Centrifuge at 5,000xg for 5min.
2. Carefully open the tube and add 100ul of sterile water to dissolve the DNA.
3. Close the tube and incubate for 10 minutes at room temperature.
4. Briefly vortex the tube and then do a quick spin (less than 5000xg) to concentrate the liquid at the bottom.
5. Store the suspended plasmid at -20°C. The DNA is stable for at least one year from date of shipping when stored at -20°C.

**RefSeq:** [NM\\_012264.5](#)

**RefSeq Size:** 3629 bp

**RefSeq ORF:** 1224 bp

**Locus ID:** 25829

**UniProt ID:** [Q9Y519](#)

**Cytogenetics:** 22q13.1

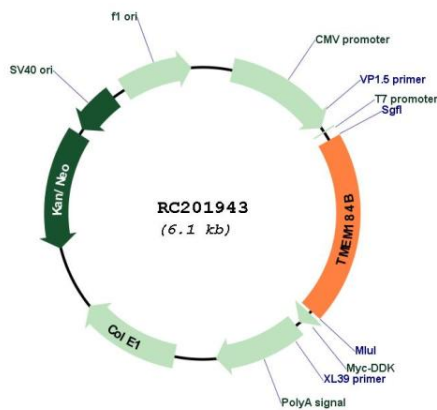
**Domains:** DUF300

**Protein Families:** Transmembrane

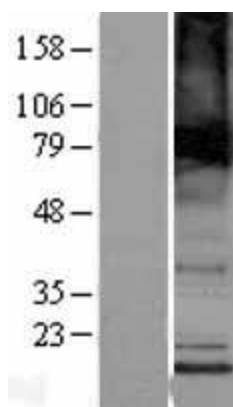
**MW:** 45.6 kDa

**Gene Summary:** May activate the MAP kinase signaling pathway.[UniProtKB/Swiss-Prot Function]

**Product images:**



Circular map for RC201943



Western blot validation of overexpression lysate (Cat# [LY402182]) using anti-DDK antibody (Cat# [TA50011-100]). Left: Cell lysates from untransfected HEK293T cells; Right: Cell lysates from HEK293T cells transfected with RC201943 using transfection reagent MegaTran 2.0 (Cat# [TT210002]).