

Product datasheet for RC201925L1

14 3 3 gamma (YWHAG) (NM_012479) Human Tagged Lenti ORF Clone

Product data:

Product Type:	Expression Plasmids
Product Name:	14 3 3 gamma (YWHAG) (NM_012479) Human Tagged Lenti ORF Clone
Tag:	Myc-DDK
Symbol:	14 3 3 gamma
Synonyms:	14-3-3GAMMA; DEE56; EIEE56; PPP1R170
Mammalian Cell Selection:	None
Vector:	pLenti-C-Myc-DDK (PS100064)
E. coli Selection:	Chloramphenicol (34 ug/mL)
ORF Nucleotide Sequence:	The ORF insert of this clone is exactly the same as(RC201925).
Restriction Sites:	SgfI-MluI
Cloning Scheme:	

Cloning sites used for ORF Shuttling:



* The last codon before the Stop codon of the ORF.

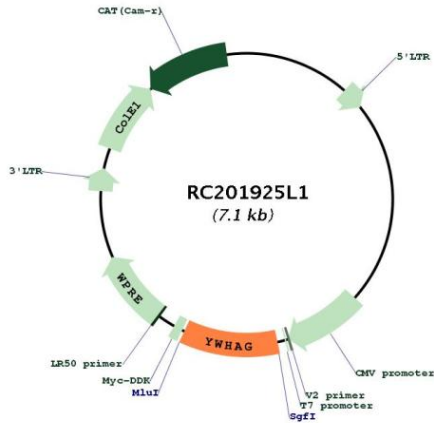
ACCN:	NM_012479
ORF Size:	741 bp



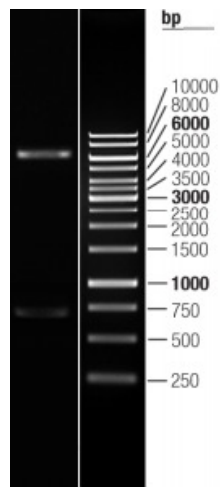
[View online »](#)

OTI Disclaimer:	The molecular sequence of this clone aligns with the gene accession number as a point of reference only. However, individual transcript sequences of the same gene can differ through naturally occurring variations (e.g. polymorphisms), each with its own valid existence. This clone is substantially in agreement with the reference, but a complete review of all prevailing variants is recommended prior to use. More info
OTI Annotation:	This clone was engineered to express the complete ORF with an expression tag. Expression varies depending on the nature of the gene.
Components:	The ORF clone is ion-exchange column purified and shipped in a 2D barcoded Matrix tube containing 10ug of transfection-ready, dried plasmid DNA (reconstitute with 100 ul of water).
Reconstitution Method:	<ol style="list-style-type: none">1. Centrifuge at 5,000xg for 5min.2. Carefully open the tube and add 100ul of sterile water to dissolve the DNA.3. Close the tube and incubate for 10 minutes at room temperature.4. Briefly vortex the tube and then do a quick spin (less than 5000xg) to concentrate the liquid at the bottom.5. Store the suspended plasmid at -20°C. The DNA is stable for at least one year from date of shipping when stored at -20°C.
RefSeq:	NM_012479.2
RefSeq Size:	3779 bp
RefSeq ORF:	744 bp
Locus ID:	7532
UniProt ID:	P61981
Cytogenetics:	7q11.23
Domains:	14-3-3
Protein Families:	Druggable Genome
Protein Pathways:	Cell cycle, Neurotrophin signaling pathway, Oocyte meiosis
MW:	28.3 kDa
Gene Summary:	This gene product belongs to the 14-3-3 family of proteins which mediate signal transduction by binding to phosphoserine-containing proteins. This highly conserved protein family is found in both plants and mammals, and this protein is 100% identical to the rat ortholog. It is induced by growth factors in human vascular smooth muscle cells, and is also highly expressed in skeletal and heart muscles, suggesting an important role for this protein in muscle tissue. It has been shown to interact with RAF1 and protein kinase C, proteins involved in various signal transduction pathways. [provided by RefSeq, Jul 2008]

Product images:



Circular map for RC201925L1



Double digestion of RC201925L1 using SgfI and MluI