

Product datasheet for **RC201922**

RAB23 (NM_016277) Human Tagged ORF Clone

Product data:

Product Type: Expression Plasmids
Product Name: RAB23 (NM_016277) Human Tagged ORF Clone
Tag: Myc-DDK
Symbol: RAB23
Synonyms: HSPC137
Mammalian Cell Selection: Neomycin
Vector: pCMV6-Entry (PS100001)
E. coli Selection: Kanamycin (25 ug/mL)
ORF Nucleotide Sequence: >RC201922 ORF sequence
Red=Cloning site Blue=ORF Green=Tags(s)

TTTTGTAATACGACTCACTATAGGGCGCCGGGAATTCGTCGACTGGATCCGGTACCGAGGAGATCTGCC
GCC**CGATCGCC**

ATGTTGGAGGAAGATATGGAAGTCGCCATAAAGATGGTGGTTGTAGGGAATGGAGCAGTTGGAAAATCAA
GTATGATTCAGCGATATTGCAAAGGCATTTTTACAAAAGACTACAAGAAAACCATTGGAGTTGATTTTTT
GGAGCGACAAATTCAAGTTAATGATGAAGATGTCAGACTAATGTTATGGGACACTGCAGGTCAGGAGGAA
TTTGATGCAATTACAAAGCCTACTATCGAGGAGCCCAGGCTTGTGTCTCGTGTCTCTACCACAGATA
GGGAATCTTTTGAAGCAGTTTCCAGTTGGAGAGAGAAAGTAGTAGCCGAAGTGGGAGATATACCAACTGT
ACTTGTGCAAAAACAGATTGATCTTCTGGATGATTCTTGTATAAAGAATGAGGAAGCTGAGGCACTGGCA
AAAAGGTTAAAGTTAAGATTCTACAGAACATCAGTGAAAGAAGATCTAAATGTGAATGAAGTTTTAAGT
ATTTGGCTGAAAAATACCTTCAGAACTCAAACAACAAATAGCTGAGGATCCAGAACTAACGCATTCAAG
TAGTAACAAGATTGGTGTCTTAATACATCTGGTGAAGTCACTCCGGTCAGAATTCAGGTACCCCTCAAT
GGTGGAGATGTCATCAATCTTAGACCAACAAACAAAGGACCAAGAAAAACAGAAATCCTTTTAGCAGCT
GTAGCATACCC

ACGCGTACGCGGCCGCTCGAGCAGAACTCATCTCAGAAGAGGATCTGGCAGCAAATGATATCCTGGATT
ACAAGGATGACGACGATAAGGTTTAA



[View online »](#)

Protein Sequence: >RC201922 protein sequence
Red=Cloning site Green=Tags(s)

MLEEDMEVAIKMVVVNGAVGKSSMIQRYCKGIFTKDYKKTIGVDFLERQIQVNDEDVRLMLWDTAGQEE
 FDAITKAYYRGAQACVLVFSTTDRESFEAVSSWREKVVAEVDIPTVLVQNKIDLLDDSCIKNEEAELA
 KRLKLRFYRTSVKEDLVNEVFKYLAEKYLQKLKQQAEDPELTHSSSNKIGVFNTSGGSHSGQNSGLTN
 GGDVINLRPNKQRTTKNRNPFSSCSIP

TRTRPLEQKLISEEDLAANDILDYKDDDDKV

Chromatograms: https://cdn.origene.com/chromatograms/mk6013_f02.zip

Restriction Sites: SgfI-MluI

Cloning Scheme:



ACCN: NM_016277

ORF Size: 711 bp

OTI Disclaimer: The molecular sequence of this clone aligns with the gene accession number as a point of reference only. However, individual transcript sequences of the same gene can differ through naturally occurring variations (e.g. polymorphisms), each with its own valid existence. This clone is substantially in agreement with the reference, but a complete review of all prevailing variants is recommended prior to use. [More info](#)

OTI Annotation: This clone was engineered to express the complete ORF with an expression tag. Expression varies depending on the nature of the gene.

Components: The ORF clone is ion-exchange column purified and shipped in a 2D barcoded Matrix tube containing 10ug of transfection-ready, dried plasmid DNA (reconstitute with 100 ul of water).

Reconstitution Method:

1. Centrifuge at 5,000xg for 5min.
2. Carefully open the tube and add 100ul of sterile water to dissolve the DNA.
3. Close the tube and incubate for 10 minutes at room temperature.
4. Briefly vortex the tube and then do a quick spin (less than 5000xg) to concentrate the liquid at the bottom.
5. Store the suspended plasmid at -20°C. The DNA is stable for at least one year from date of shipping when stored at -20°C.

Note: Plasmids are not sterile. For experiments where strict sterility is required, filtration with 0.22um filter is required.

RefSeq: [NM_016277.5](#)

RefSeq Size: 4837 bp

RefSeq ORF: 714 bp

Locus ID: 51715

UniProt ID: [Q9ULC3](#)

Cytogenetics: 6p12.1-p11.2

Domains: ras, RAN, RAS, RHO, RAB

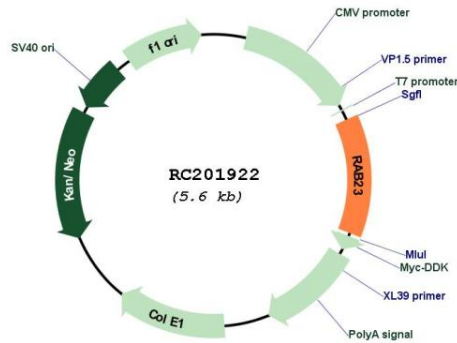
Protein Families: Druggable Genome

Protein Pathways: Hedgehog signaling pathway

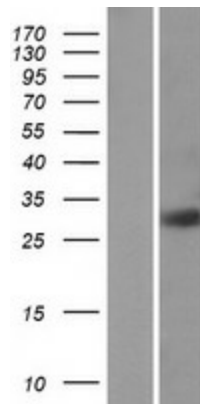
MW: 26.7 kDa

Gene Summary: This gene encodes a small GTPase of the Ras superfamily. Rab proteins are involved in the regulation of diverse cellular functions associated with intracellular membrane trafficking, including autophagy and immune response to bacterial infection. The encoded protein may play a role in central nervous system development by antagonizing sonic hedgehog signaling. Disruption of this gene has been implicated in Carpenter syndrome as well as cancer. Alternative splicing results in multiple transcript variants. [provided by RefSeq, Jul 2013]

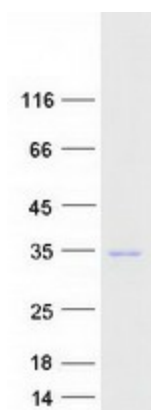
Product images:



Circular map for RC201922



Western blot validation of overexpression lysate (Cat# [LY402532]) using anti-DDK antibody (Cat# [TA50011-100]). Left: Cell lysates from untransfected HEK293T cells; Right: Cell lysates from HEK293T cells transfected with RC201922 using transfection reagent MegaTran 2.0 (Cat# [TT210002]).



Coomassie blue staining of purified RAB23 protein (Cat# [TP301922]). The protein was produced from HEK293T cells transfected with RAB23 cDNA clone (Cat# RC201922) using MegaTran 2.0 (Cat# [TT210002]).