

## Product datasheet for RC201911

### MLX (NM\_198204) Human Tagged ORF Clone

#### Product data:

Product Type:	Expression Plasmids
Product Name:	MLX (NM_198204) Human Tagged ORF Clone
Tag:	Myc-DDK
Symbol:	MLX
Synonyms:	bHLHd13; MAD7; MXD7; TCFL4; TF4
Mammalian Cell Selection:	Neomycin
Vector:	pCMV6-Entry (PS100001)
E. coli Selection:	Kanamycin (25 ug/mL)
ORF Nucleotide Sequence:	>RC201911 ORF sequence Red=Cloning site Blue=ORF Green=Tags(s)

TTTTGTAATACGACTCACTATAGGGCGGCCGGAATTCGTCGACTGGATCCGGTACCGAGGAGATCTGCC  
GCC**CGATCGCC**

ATGACGGAGCCGGCGCCTCTCCGAGGACCCTTGGGTCAAGGTGGAGTATGCCTACAGCGACAACAGCC  
TGGACCCCGGGCTTTTGTAGAAAGCACCCGCAAGGGGAGTGTAGTGTCCAGAGCTAATAGCATCGGTTCC  
CACCAGTGCCCTTCTGTCCCAACACAGATGATGAGGACAGTGATTACCACCAGGAGGCCATCAAGGAG  
TCCTACAAAGACCGGCGGCGCGCACACACTCAGGCTGAGCAGAAGAGGAGGGACGCCATCAAGAGAG  
GCTATGATGACCTTCAGACCATCGTCCCCTTCCAGCAGCAGGACTTCTCCATTGGCTCCAAAAGCT  
CAGCAAAGCCATCGTTCTACAAAAGACCATTGACTACATTTCAGTTTTTGCACAAGGAGAAGAAAAGCAG  
GAGGAGGAGGTGTCCACGTTACGCAAGGATGTCACCGCCCTAAAGATCATGAAAGTGAAGTATGAGCAGA  
TTGTGAAGGCACACCAGGACAACCCCATGAAGGGGAGGACCAGGTCTCTGACCAGGTCAAGTTCAACGT  
GTTTCAAGGCATCATGGATTCCCTGTTCCAGTCTTCAATGCCTCCATCTCAGTGCCAGCTTCCAGGAG  
CTGTCAGCATGTGTTTCCAGCTGGATCGAGGAGCACTGTAAGCCTCAGACCCTGCGGGAGATTGTGATTG  
CGTCTGCACCAATTGAAAAACCAGCTTTAC

**ACGCGT**ACGCGGCCGCTCGAGCAGAACTCATCTCAGAAGAGGATCTGGCAGCAAATGATATCCTGGATT  
ACAAGGATGACGACGATAAGGTTTAA



[View online »](#)

**Protein Sequence:** >RC201911 protein sequence  
 Red=Cloning site Green=Tags(s)

MTEPGASPEDPWVKVEYAYSDNSLDPGLFVESTRKGSVSVSRANSIGSTSASSVPNTDDESDYHQEAYKE  
 SYKDRRRRAHTQAEQKRRDAIKRGYDDLQTI VPTCQQQDFSIGSQKLSKAI VLQKTI DYIQFLHKEKKKQ  
 EEEVSTLRKDV TALKIMKVNYEQIVKAHQDNPHEGEDQVSDQVKFNVFQGIMDSL FQSFNASISVASFQE  
 LSACVFSWIEEHCKPQTLREIVIGVLHQLKNQLY

TRTRPLEQKLISEEDLAANDILDYKDDDDKV

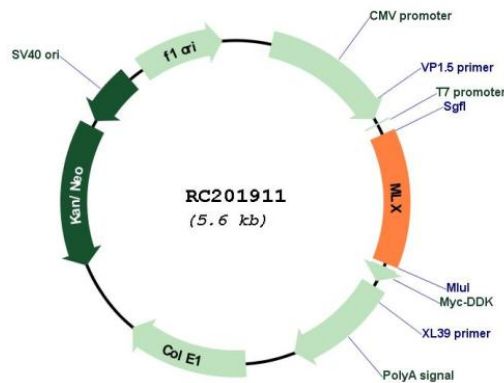
**Chromatograms:** [https://cdn.origene.com/chromatograms/mk6303\\_c02.zip](https://cdn.origene.com/chromatograms/mk6303_c02.zip)

**Restriction Sites:** SgfI-MluI

**Cloning Scheme:**



**Plasmid Map:**

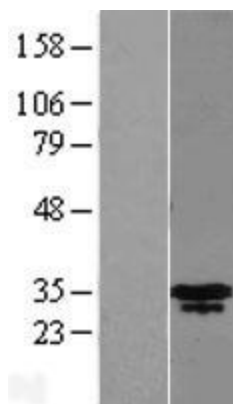


**ACCN:** NM\_198204

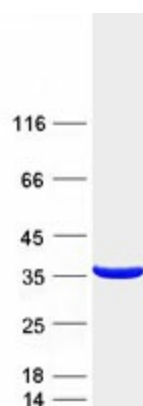
**ORF Size:** 732 bp

<b>OTI Disclaimer:</b>	The molecular sequence of this clone aligns with the gene accession number as a point of reference only. However, individual transcript sequences of the same gene can differ through naturally occurring variations (e.g. polymorphisms), each with its own valid existence. This clone is substantially in agreement with the reference, but a complete review of all prevailing variants is recommended prior to use. <a href="#">More info</a>
<b>OTI Annotation:</b>	This clone was engineered to express the complete ORF with an expression tag. Expression varies depending on the nature of the gene.
<b>Components:</b>	The ORF clone is ion-exchange column purified and shipped in a 2D barcoded Matrix tube containing 10ug of transfection-ready, dried plasmid DNA (reconstitute with 100 ul of water).
<b>Reconstitution Method:</b>	<ol style="list-style-type: none"><li>1. Centrifuge at 5,000xg for 5min.</li><li>2. Carefully open the tube and add 100ul of sterile water to dissolve the DNA.</li><li>3. Close the tube and incubate for 10 minutes at room temperature.</li><li>4. Briefly vortex the tube and then do a quick spin (less than 5000xg) to concentrate the liquid at the bottom.</li><li>5. Store the suspended plasmid at -20°C. The DNA is stable for at least one year from date of shipping when stored at -20°C.</li></ol>
<b>RefSeq:</b>	<a href="#">NM_198204.1</a> , <a href="#">NP_937847.1</a>
<b>RefSeq Size:</b>	2406 bp
<b>RefSeq ORF:</b>	735 bp
<b>Locus ID:</b>	6945
<b>UniProt ID:</b>	<a href="#">Q9UH92</a>
<b>Cytogenetics:</b>	17q21.2
<b>Protein Families:</b>	Druggable Genome, Transcription Factors
<b>MW:</b>	27.9 kDa
<b>Gene Summary:</b>	The product of this gene belongs to the family of basic helix-loop-helix leucine zipper (bHLH-Zip) transcription factors. These factors form heterodimers with Mad proteins and play a role in proliferation, determination and differentiation. This gene product may act to diversify Mad family function by its restricted association with a subset of the Mad family of transcriptional repressors, namely, Mad1 and Mad4. Alternatively spliced transcript variants encoding different isoforms have been identified for this gene. [provided by RefSeq, Jul 2008]

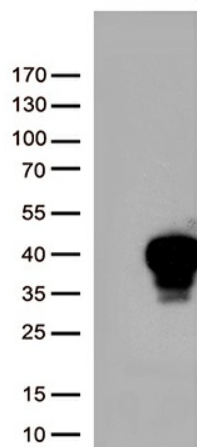
## Product images:



Western blot validation of overexpression lysate (Cat# [LY404977]) using anti-DDK antibody (Cat# [TA50011-100]). Left: Cell lysates from untransfected HEK293T cells; Right: Cell lysates from HEK293T cells transfected with RC201911 using transfection reagent MegaTran 2.0 (Cat# [TT210002]).



Coomassie blue staining of purified MLX protein (Cat# [TP301911]). The protein was produced from HEK293T cells transfected with MLX cDNA clone (Cat# RC201911) using MegaTran 2.0 (Cat# [TT210002]).



HEK293T cells were transfected with the pCMV6-ENTRY control (Cat# [PS100001], Left lane) or pCMV6-ENTRY MLX (Cat# RC201911, Right lane) cDNA for 48 hrs and lysed. Equivalent amounts of cell lysates (5 ug per lane) were separated by SDS-PAGE and immunoblotted with anti-MLX (Cat# [TA810951])(1:500). Positive lysates [LY404977] (100ug) and [LC404977] (20ug) can be purchased separately from OriGene.