

Product datasheet for RC201909

LIME (LIME1) (NM_017806) Human Tagged ORF Clone

Product data:

| | |
|---------------------------|---|
| Product Type: | Expression Plasmids |
| Product Name: | LIME (LIME1) (NM_017806) Human Tagged ORF Clone |
| Tag: | Myc-DDK |
| Symbol: | LIME |
| Synonyms: | dj583P15.4; LIME |
| Mammalian Cell Selection: | Neomycin |
| Vector: | pCMV6-Entry (PS100001) |
| E. coli Selection: | Kanamycin (25 ug/mL) |
| ORF Nucleotide Sequence: | >RC201909 ORF sequence Red=Cloning site Blue=ORF Green=Tags(s) |

TTTGTAAATACGACTCACTATAGGGCGGCCGGAATTCGTCGACTGGATCCGGTACCGAGGAGATCTGCC
GCC**CGATCGCC**

ATGGGGCTGCCAGTGTCTGGGCCCTCCTGCCCTCTGGGTTCTAGGGTGCTGCGCCCTGCTCCTCTCGC
TGTGGGCGCTGTGCACAGCCTGCCGAGGCCGAGGACGCTGTAGCCCCAGGAAGAGGGCGGGAGGCA
GCGGGCGAGGCTGCAGGGCAGTGCAGCGCGCGGAAGCGTCCCTACTGAGGCGGACCCACCTCTGCTCC
CTCAGCAAGTCGGACACCAGACTGCACGAGCTGCACGGGGCCCGCAGCAGCAGGGCCCTGCGGCCTG
CCAGCATGGATCTCCTGCGCCACACTGGCTGGAGGTGTCCAGGGACATACCGGACCGCAGGCAGCCCC
CTCTGCCTTCCACACCAGGAGCTGCCCGGGCTCTGCCGCGAGCTGCAGCCACCGCAGGGTGCGCTGGC
CTCGAGGCCACCTATTCCAACGTGGGGCTGGCGGCCCTTCCCGGGGTGAGCCTGGCGGCCAGCCCTGTGG
TGGCCGAGTATGCCCAGCTCCAGAAGCGCAAAGGGACCCATCGCAGTCCCAAGAGCCACAGCAGGGGAA
GACTGAGGTGACCCCGCCGCTCAGGTGGACGTCTGTACTCCAGGGTCTGCAAGCCTAAAGGAGGGAC
CCAGGACCCACCACAGCCCGCTGGACCCCAAGGGCCAGGGAGCGATTCTGGCCCTGGCGGGTGACCTGG
CCTACCAGACCTCCCGCTCAGGGCCCTGGATGTGGACAGCGGCCCTGGAAAACGTGTATGAGAGCAT
CCGGGAGCTGGGGACCTGCTGGCAGGAGCAGACGTGCGGGGCTGGGACGCCCCCTGCTTCCAGCTGC
CCCAGCCTAGGGAGGGGCTGGAGACCCCTCCCTGCCTCCCTGCC

ACGCGTACGCGGGCGCTCGAGCAGAACTCATCTCAGAAGAGGATCTGGCAGCAAATGATATCCTGGATT
ACAAGGATGACGACGATAAGGTTTAA


[View online »](#)

Protein Sequence: >RC201909 protein sequence
 Red=Cloning site Green=Tags(s)

MGLPVSWAPPALWVLGCCALLLSLWALCTACRRPEDAVAPRKRRRQRARLQGSATAAEASLLRRTHLCS
 LSKSDTRLHELHRGPRSSRALRPASMDLLRPHWLEVS RDITGPQAAPSAFPHQELPRALPAAAATAGCAG
 LEATYSNVGLAALPGVSLAASPVAEYARVQKRKGTHRSPQEPQQGKTEVTPAAQVDVLYSRVCKPKRRD
 PGPTTDP LDPKGQGAILALAGDLAYQTLPLRALDVDSGPLENVYESIRELGDPAGRSSTCGAGTPPASSC
 PSLGRGWRPLPASLP

TRTRPLEQKLISEEDLAANDILDYKDDDDKV

Chromatograms: https://cdn.origene.com/chromatograms/mk6305_h02.zip

Restriction Sites: SgfI-MluI

Cloning Scheme:



ACCN: NM_017806

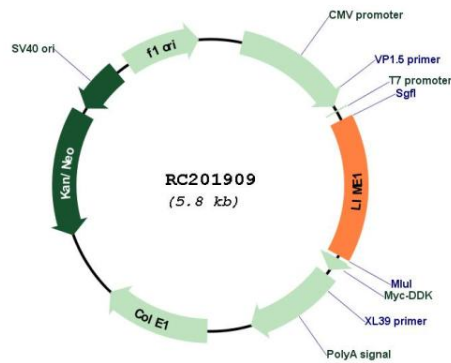
ORF Size: 885 bp

OTI Disclaimer: Due to the inherent nature of this plasmid, standard methods to replicate additional amounts of DNA in E. coli are highly likely to result in mutations and/or rearrangements. Therefore, OriGene does not guarantee the capability to replicate this plasmid DNA. Additional amounts of DNA can be purchased from OriGene with batch-specific, full-sequence verification at a reduced cost. Please contact our customer care team at custsupport@origene.com or by calling 301.340.3188 option 3 for pricing and delivery.

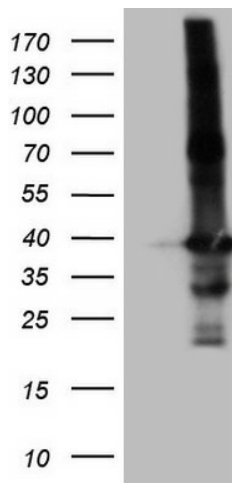
The molecular sequence of this clone aligns with the gene accession number as a point of reference only. However, individual transcript sequences of the same gene can differ through naturally occurring variations (e.g. polymorphisms), each with its own valid existence. This clone is substantially in agreement with the reference, but a complete review of all prevailing variants is recommended prior to use. [More info](#)

| | |
|-------------------------------|---|
| OTI Annotation: | This clone was engineered to express the complete ORF with an expression tag. Expression varies depending on the nature of the gene. |
| Components: | The ORF clone is ion-exchange column purified and shipped in a 2D barcoded Matrix tube containing 10ug of transfection-ready, dried plasmid DNA (reconstitute with 100 ul of water). |
| Reconstitution Method: | <ol style="list-style-type: none"> 1. Centrifuge at 5,000xg for 5min. 2. Carefully open the tube and add 100ul of sterile water to dissolve the DNA. 3. Close the tube and incubate for 10 minutes at room temperature. 4. Briefly vortex the tube and then do a quick spin (less than 5000xg) to concentrate the liquid at the bottom. 5. Store the suspended plasmid at -20°C. The DNA is stable for at least one year from date of shipping when stored at -20°C. |
| Note: | Plasmids are not sterile. For experiments where strict sterility is required, filtration with 0.22um filter is required. |
| RefSeq: | <u>NM_017806.4</u> |
| RefSeq Size: | 1206 bp |
| RefSeq ORF: | 888 bp |
| Locus ID: | 54923 |
| UniProt ID: | <u>Q9H400</u> |
| Cytogenetics: | 20q13.33 |
| Protein Families: | Transmembrane |
| MW: | 31.3 kDa |
| Gene Summary: | This gene encodes a transmembrane adaptor protein that links the T and B-cell receptor stimulation to downstream signaling pathways via its association with the Src family kinases Lck and Lyn, respectively. Alternative splicing of this gene results in multiple transcript variants. [provided by RefSeq, Mar 2015] |

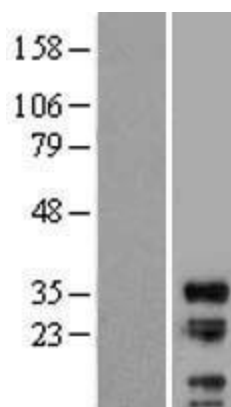
Product images:



Circular map for RC201909



HEK293T cells were transfected with the pCMV6-ENTRY control (Cat# [PS100001], Left lane) or pCMV6-ENTRY LIME1 (Cat# RC201909, Right lane) cDNA for 48 hrs and lysed. Equivalent amounts of cell lysates (5 ug per lane) were separated by SDS-PAGE and immunoblotted with anti-LIME1 (Cat# [TA807703])(1:2000). Positive lysates [LY413516] (100ug) and [LC413516] (20ug) can be purchased separately from OriGene.



Western blot validation of overexpression lysate (Cat# [LY413516]) using anti-DDK antibody (Cat# [TA50011-100]). Left: Cell lysates from untransfected HEK293T cells; Right: Cell lysates from HEK293T cells transfected with RC201909 using transfection reagent MegaTran 2.0 (Cat# [TT210002]).