

Product datasheet for RC201907

C9orf6 (FAM206A) (NM_017832) Human Tagged ORF Clone

Product data:

Product Type:	Expression Plasmids
Product Name:	C9orf6 (FAM206A) (NM_017832) Human Tagged ORF Clone
Tag:	Myc-DDK
Symbol:	C9orf6
Synonyms:	C9orf6; CG-8; FAM206A; Simiate
Mammalian Cell Selection:	Neomycin
Vector:	pCMV6-Entry (PS100001)
E. coli Selection:	Kanamycin (25 ug/mL)
ORF Nucleotide Sequence:	>RC201907 ORF sequence Red=Cloning site Blue=ORF Green=Tags(s)

TTTTGTAATACGACTCACTATAGGGCGGCCGGAATTCGTCGACTGGATCCGGTACCGAGGAGATCTGCC
GCC**CGATCGCC**

ATGGCTACCGAGCCCGAAGCCGCGGAGCCGGTGGTGCCTTCGCTCGTGGATCGATACTTCACTCGCTGGT
ACAAACCGGATGTCAAAGGAAAATTTGTGAGGACCACTGTATACTACAGCACTTAACCGAATATGTGT
CATCACATTGGCAGAATCTCATCCAGTTCTTCAAAGTGGAAAAACAATTAAGCATTTCCTATCAGATC
AGTACCAACTGTAGCAGACTTCAGAACAAGGTCTCTGGGAAATTAAGCGGGGGGCACAGTTTCTAACAG
AGCTTGCACCTCTCTGTAAGATTTACTGCTCAGATGGTGAAGAATATACTGTGTCTAGTTGTGTTAGAGG
ACGTTTGTATGGAAGTGAATGAAAACATCCTCCATAAGCCATCTATTCTTCAAGAAAAGCCATCTACTGAA
GGCTACATTGCAGTTGTGTTACCCAAATTTGAAGAAAGTAAAAGCATAACAGAAGGGTTACTGACACAAA
AACAAATGAAGAAGTCATGGTGAACGCATTAATGCCACAACAGCTACGTCA

ACGCGTACGCGGCCGCTCGAGCAGAACTCATCTCAGAAGAGGATCTGGCAGCAAATGATATCCTGGATT
ACAAGGATGACGACGATAAGGTTTAA

Protein Sequence:	>RC201907 protein sequence Red=Cloning site Green=Tags(s)
-------------------	--

MATEPEAAEPVPSLVDRYFTRWYKPDVKGKFCEDHCILQHSNRICVITLAESHVPLQSGKTIKISISYQI
STNCSRLQNKVSGKFKRGAQFLTELAPLCKIYCSDGEEYTVSSCVRGRLEMEVNIILHKPSILQEKPSTE
GYIAVVLPKFEESKSITTEGLLTQKQYEEVMVKRINATTATS

TRTRPLEQKLISEEDLAANDILDYKDDDDKV

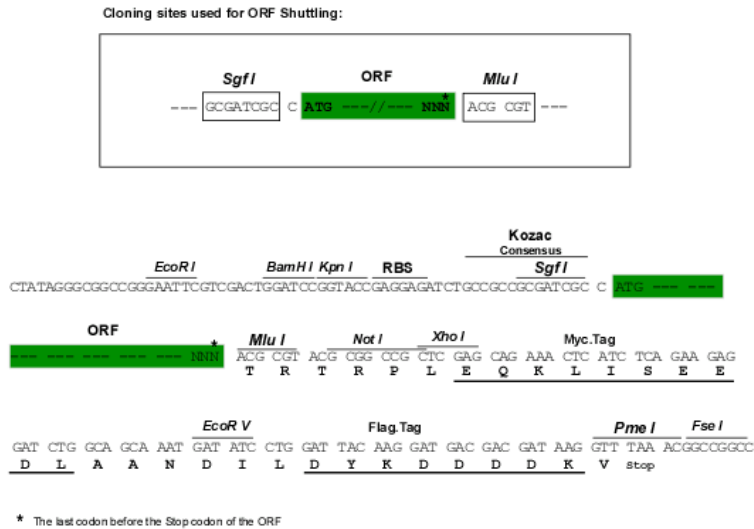
Chromatograms:	https://cdn.origene.com/chromatograms/mk6307_b10.zip
----------------	---



[View online »](#)

Restriction Sites: SgfI-MluI

Cloning Scheme:



ACCN: NM_017832

ORF Size: 543 bp

OTI Disclaimer: The molecular sequence of this clone aligns with the gene accession number as a point of reference only. However, individual transcript sequences of the same gene can differ through naturally occurring variations (e.g. polymorphisms), each with its own valid existence. This clone is substantially in agreement with the reference, but a complete review of all prevailing variants is recommended prior to use. [More info](#)

OTI Annotation: This clone was engineered to express the complete ORF with an expression tag. Expression varies depending on the nature of the gene.

Components: The ORF clone is ion-exchange column purified and shipped in a 2D barcoded Matrix tube containing 10ug of transfection-ready, dried plasmid DNA (reconstitute with 100 ul of water).

Reconstitution Method:

1. Centrifuge at 5,000xg for 5min.
2. Carefully open the tube and add 100ul of sterile water to dissolve the DNA.
3. Close the tube and incubate for 10 minutes at room temperature.
4. Briefly vortex the tube and then do a quick spin (less than 5000xg) to concentrate the liquid at the bottom.
5. Store the suspended plasmid at -20°C. The DNA is stable for at least one year from date of shipping when stored at -20°C.

RefSeq: [NM_017832.4](#)

RefSeq Size: 1925 bp

RefSeq ORF: 546 bp

Locus ID: 54942

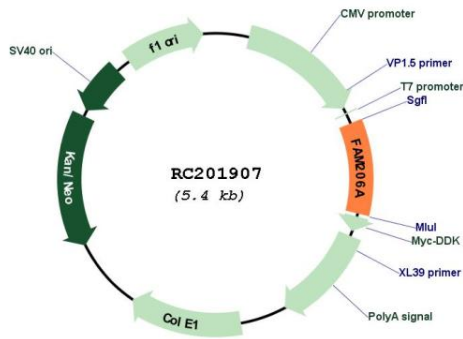
UniProt ID: [Q9NX38](#)

Cytogenetics: 9q31.3

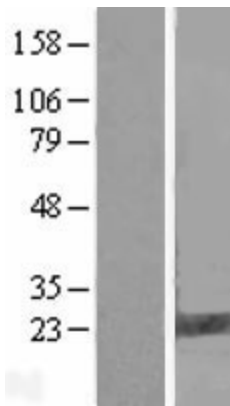
MW: 20.4 kDa

Gene Summary: Actin-binding protein that regulates actin polymerization, filopodia dynamics and increases the branching of proximal dendrites of developing neurons.[UniProtKB/Swiss-Prot Function]

Product images:



Circular map for RC201907



Western blot validation of overexpression lysate (Cat# [LY413506]) using anti-DDK antibody (Cat# [TA50011-100]). Left: Cell lysates from untransfected HEK293T cells; Right: Cell lysates from HEK293T cells transfected with RC201907 using transfection reagent MegaTran 2.0 (Cat# [TT210002]).



Coomassie blue staining of purified ABITRAM protein (Cat# [TP301907]). The protein was produced from HEK293T cells transfected with ABITRAM cDNA clone (Cat# RC201907) using MegaTran 2.0 (Cat# [TT210002]).