

Product datasheet for **RC201899L4V**

Tapasin Related Protein (TAPBPL) (NM_018009) Human Tagged ORF Clone Lentiviral Particle

Product data:

Product Type:	Lentiviral Particles
Product Name:	Tapasin Related Protein (TAPBPL) (NM_018009) Human Tagged ORF Clone Lentiviral Particle
Symbol:	Tapasin Related Protein
Synonyms:	TAPBP-R; TAPBPR
Mammalian Cell Selection:	Puromycin
Vector:	pLenti-C-mGFP-P2A-Puro (PS100093)
Tag:	mGFP
ACCN:	NM_018009
ORF Size:	1404 bp
ORF Nucleotide Sequence:	The ORF insert of this clone is exactly the same as(RC201899).
OTI Disclaimer:	The molecular sequence of this clone aligns with the gene accession number as a point of reference only. However, individual transcript sequences of the same gene can differ through naturally occurring variations (e.g. polymorphisms), each with its own valid existence. This clone is substantially in agreement with the reference, but a complete review of all prevailing variants is recommended prior to use. More info
OTI Annotation:	This clone was engineered to express the complete ORF with an expression tag. Expression varies depending on the nature of the gene.
RefSeq:	NM_018009.3 , NP_060479.2
RefSeq Size:	1834 bp
RefSeq ORF:	1407 bp
Locus ID:	55080
UniProt ID:	Q9BX59
Cytogenetics:	12p13.31
Domains:	ig, IGc1, IG
Protein Families:	Druggable Genome, Transmembrane

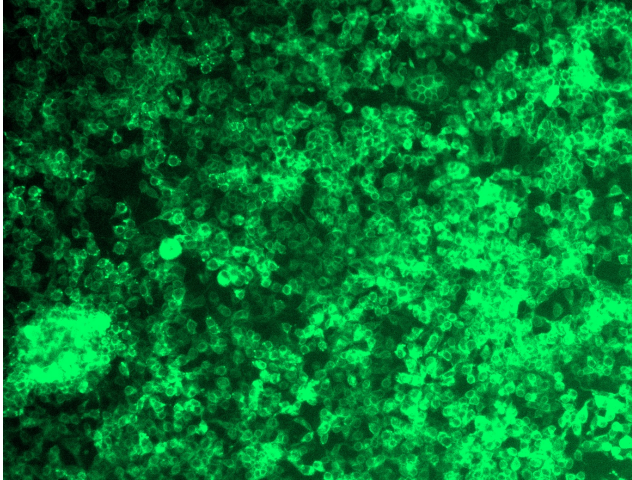


[View online »](#)

MW: 50.2 kDa

Gene Summary: Tapasin, or TAPBP (MIM 601962), is a member of the variable-constant Ig superfamily that links major histocompatibility complex (MHC) class I molecules to the transporter associated with antigen processing (TAP; see MIM 170260) in the endoplasmic reticulum (ER). The TAPBP gene is located near the MHC complex on chromosome 6p21.3. TAPBPL is a member of the Ig superfamily that is localized on chromosome 12p13.3, a region somewhat paralogous to the MHC.[supplied by OMIM, Mar 2008]

Product images:



[RC201899L4] was used to prepare Lentiviral particles using [TR30037] packaging kit. HEK293T cells were transduced with RC201899L4V particle to overexpress human TAPBPL-mGFP fusion protein.