

Product datasheet for **RC201899**

Tapasin Related Protein (TAPBPL) (NM_018009) Human Tagged ORF Clone

Product data:

Product Type:	Expression Plasmids
Product Name:	Tapasin Related Protein (TAPBPL) (NM_018009) Human Tagged ORF Clone
Tag:	Myc-DDK
Symbol:	Tapasin Related Protein
Synonyms:	TAPBP-R; TAPBPR
Mammalian Cell Selection:	Neomycin
Vector:	pCMV6-Entry (PS100001)
E. coli Selection:	Kanamycin (25 ug/mL)



[View online »](#)

ORF Nucleotide Sequence:

>RC201899 ORF sequence
 Red=Cloning site Blue=ORF Green=Tags(s)

TTTTGTAATACGACTCACTATAGGGCGGCCGGAATTCGTCGACTGGATCCGGTACCGAGGAGATCTGCC
 GCC**CGGATCGCC**

ATGGGCACACAGGAGGGCTGGTGCCTGCTGCTCTGCCTGGCTCTATCTGGAGCAGCAGAAACCAAGCCCC
 ACCCAGCAGAGGGGCAGTGGCGGCAGTGGACGTGGTCCCTAGACTGTTTCTGGTGAAGGACGGTGC
 CCGTGGAGCTCTCGCCAGCAGTGAAGCAGGGCAAGGGCCTCCCTTGTGCTGAAGCAGGTGCCAGT
 GCTGACGATGGCTCCCTGGAGGACTTACCGATTTCCAAGGGGCACACTGGCCCAAGATGACCCACCTATTA
 TCTTTGAGGCCTCAGTGGACCTGGTCCAGATTCGCCAGGCCGAGGCCTTGTCTCATGCTGACTGCAGTGG
 GAAGGAGGTGACCTGTGAGATCTCCGCTACTTTCTCCAGATGACAGAGACCCTGTTAAGCAGCAGCT
 TGGTTCATGGCCAACGTGCAGGTCTCTGGAGGGGGACCTAGCATCTCCTTGGTATGAAGACTCCCAGGG
 TCGCCAAGAATGAGGTGCTCTGGCACCAACGCTGAACCTGCCACTGAGCCCCAGGGGACTGTGCGAAC
 TGCAGTGGAGTCCAGGTGATGACACAGACCCAATCCCTGAGCTTCTGTGGGGTCTCAGCCTCCTTG
 GACTGTGGCTTCTCCATGGCACCCGGCTTGGACCTCATCAGTGTGGAGTGGCGACTGCAGACAAGGGCA
 GGGGTCAGTTGGTGTACAGCTGGACCGCAGGGCAGGGCAGGCTGTGCGGAAGGGCGCTACCTGGAGCC
 TGCACAACCTGGGCATGGCCAGGGATGCCTCCCTCACCTGCCCGCCTCACTATACAGGACGAGGGGACC
 TACATTTGCCAGATCACCACTCTCTGTACCGAGCTCAGCAGATCATCCAGCTCAACATCCAAGTTCCC
 CTAAGTACGACTGAGCTTGGCAAACGAAGCTCTGCTGCCACCCTCATCTGCGACATTGCTGGCTATTA
 CCCTCTGGATGTGGTGGTACGTGGACCCGAGAGGAGCTGGTGGATCCCAGCCCAAGTCTCTGGTGCC
 TCCTTCTCCAGCCTCAGGCAAAGCGTGGCAGGCACCTACAGCATCTCCTCCTCTCACCGCAGAACCTG
 GCTCTGCAGGTGCCACTTACACCTGCCAGTCCACACATCTCTGGAGGAGCCCTTGGGGCCAGCAGCA
 CCAGGTTGTCCCACCAGAGCGGAGAACAGCCTTGGGAGTCACTTTGCCAGCAGTCTCTCCTTCTTGA
 CTGATGTTCTGGGGCTTCAAGACGGCAAGCACCTACAGGACTTGGGCTGCTTCAAGCTGAGGCTGGG
 AGACCACTTCTGTGCTGACACACAGAGCTCCCATCTCCATGAAGACCGCACAGCGCGTGAAGCCAGCC
 CAGC

ACGCGTACGCGGCCGCTCGAGCAGAAACTCATCTCAGAAGAGGATCTGGCAGCAATGATATCTGGATT
 ACAAGGATGACGACGATAAGGTTTAA

Protein Sequence:

>RC201899 protein sequence
 Red=Cloning site Green=Tags(s)

MGTQEGWCLLLCLALSGAAETKPHPAEQWRAVDVVLDCFLVKDGAHRGALASSEDNRARASLVLKQVPVL
 DDGSLDFDFQGGTLAQDDPPIIFEASVDLVQIPQAEALLHADCSGKEVTCEISRYFLQMTETT VKTAA
 WFMANVQVSGGSPSISLVMKTPRVAKNEVLWHPTLNLPLSPQGTVRTAVEFQVMTQTQSLFLLGSSASL
 DCGFSMAPGLDLISVEWRLQHKGRGQLVYSWTAGQGQAVRKGATLEPAQLGMARDASLTLPGLTIQDEGT
 YICQITTSLYRAQQI IQLNIQASPKVRLSLANEALLPTLICDIAGYPLDVVVVTWREELGGSPAQVSGA
 SFSSLRQSVAGTYSISSSLTAEPGSAGATYTCQVTHISLEEPLGASTQVPPERRTALGVIFASSLFLLA
 LMFGLQRRQAPTGLGLLQAERWETTSADTQSSHLHEDRTARVSQPS

TRTRPLEQKLI SEEDLAANDILDYKDDDDKV

Chromatograms:

https://cdn.origene.com/chromatograms/mk6307_d08.zip

Restriction Sites:

Sgfl-MluI

Cloning Scheme:


ACCN: NM_018009

ORF Size: 1404 bp

OTI Disclaimer: The molecular sequence of this clone aligns with the gene accession number as a point of reference only. However, individual transcript sequences of the same gene can differ through naturally occurring variations (e.g. polymorphisms), each with its own valid existence. This clone is substantially in agreement with the reference, but a complete review of all prevailing variants is recommended prior to use. [More info](#)

OTI Annotation: This clone was engineered to express the complete ORF with an expression tag. Expression varies depending on the nature of the gene.

Components: The ORF clone is ion-exchange column purified and shipped in a 2D barcoded Matrix tube containing 10ug of transfection-ready, dried plasmid DNA (reconstitute with 100 ul of water).

Reconstitution Method:

1. Centrifuge at 5,000xg for 5min.
2. Carefully open the tube and add 100ul of sterile water to dissolve the DNA.
3. Close the tube and incubate for 10 minutes at room temperature.
4. Briefly vortex the tube and then do a quick spin (less than 5000xg) to concentrate the liquid at the bottom.
5. Store the suspended plasmid at -20°C. The DNA is stable for at least one year from date of shipping when stored at -20°C.

RefSeq: [NM_018009.3](#), [NP_060479.2](#)

RefSeq Size: 1834 bp

RefSeq ORF: 1407 bp

Locus ID: 55080

UniProt ID: [Q9BX59](#)

Cytogenetics: 12p13.31

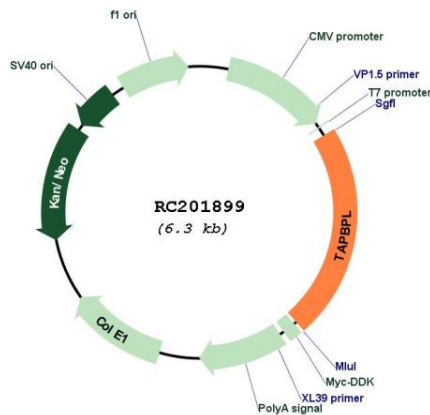
Domains: ig, IGc1, IG

Protein Families: Druggable Genome, Transmembrane

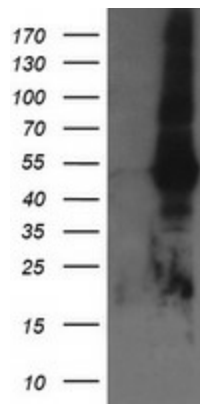
MW: 50.2 kDa

Gene Summary: Tapasin, or TAPBP (MIM 601962), is a member of the variable-constant Ig superfamily that links major histocompatibility complex (MHC) class I molecules to the transporter associated with antigen processing (TAP; see MIM 170260) in the endoplasmic reticulum (ER). The TAPBP gene is located near the MHC complex on chromosome 6p21.3. TAPBPL is a member of the Ig superfamily that is localized on chromosome 12p13.3, a region somewhat paralogous to the MHC.[supplied by OMIM, Mar 2008]

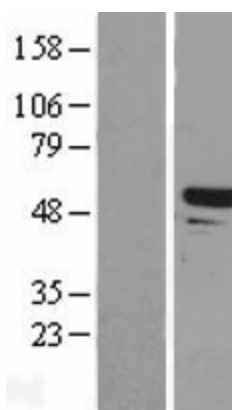
Product images:



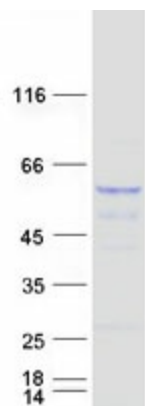
Circular map for RC201899



HEK293T cells were transfected with the pCMV6-ENTRY control (Cat# [PS100001], Left lane) or pCMV6-ENTRY TAPBPL (Cat# RC201899, Right lane) cDNA for 48 hrs and lysed. Equivalent amounts of cell lysates (5 ug per lane) were separated by SDS-PAGE and immunoblotted with anti-TAPBPL(Cat# [TA505566]). Positive lysates [LY413343] (100ug) and [LC413343] (20ug) can be purchased separately from OriGene.



Western blot validation of overexpression lysate (Cat# [LY413343]) using anti-DDK antibody (Cat# [TA50011-100]). Left: Cell lysates from untransfected HEK293T cells; Right: Cell lysates from HEK293T cells transfected with RC201899 using transfection reagent MegaTran 2.0 (Cat# [TT210002]).



Coomassie blue staining of purified TAPBPL protein (Cat# [TP301899]). The protein was produced from HEK293T cells transfected with TAPBPL cDNA clone (Cat# RC201899) using MegaTran 2.0 (Cat# [TT210002]).