

Product datasheet for RC201889

PRR11 (NM_018304) Human Tagged ORF Clone

Product data:

Product Type:	Expression Plasmids
Product Name:	PRR11 (NM_018304) Human Tagged ORF Clone
Tag:	Myc-DDK
Symbol:	PRR11
Mammalian Cell Selection:	Neomycin
Vector:	pCMV6-Entry (PS100001)
E. coli Selection:	Kanamycin (25 ug/mL)
ORF Nucleotide Sequence:	>RC201889 ORF sequence Red=Cloning site Blue=ORF Green=Tags(s)

TTTTGTAATACGACTCACTATAGGGCGGCCGGAATTCGTCGACTGGATCCGGTACCGAGGAGATCTGCC
GCC**CGATCGCC**

ATGCCCAAGTTCAAACAACGAAGACGAAAGCTAAAAGCCAAAGCCGAAAGATTATCAAAAAAAAAAGAAG
CCTCTCACTTTCAGTCCAAGCTAATTACACCTCCTCCTCCACCACCCTCACCAGAAAGAGTCGGTATTTTC
TTCAATAGATATATCTCAAAGCAGAAGCTGGCTAACATCATCCTGGAACCTCAATTTTCTAACATCAGA
GATGCAATAAACTTTGGACAAAATAGAGTATGGTCTATATACAGCTGGTGCCAGAAGTGCATAACCCAGA
GTTTAGAAGTATTGAAAGACACCATCTTCCATCTCGTATCTGCCACCGAGAAGTTTACAGTGTAACA
ACAGTTTTGCATTTTGGAAAGTAAATTATGCAAGCTCCAGGAAGCACTGAAGACCATCTCAGAAAGTTCT
TCCTGTCCAAGCTGTGGTCAAACATGTCACATGAGTGGTAAACTTACAAATGTGCCTGCCTGCGTTCTGA
TCACCCCTGGAGACTCAAAGCTGTGCTTCTCCACACTGCCACAGCCAGCCAGCCATTTTCTCCTCC
TCCTCCACCTCCACCTCTGCCACCTCCTCCACCACCCTAGCACCTGTGTTGCTCAGAAAACCCAGTCTC
GCTAAAGCACTTCAGGCTGGACCATTAAAAAAGATGGACCCATGCAGATAACAGTTAAAGATCTGCTGA
CTGTAATAAAGAAGACACAGAGTTTAGATGAAAAGAGGAAGCTTATACCATCGCCGAAAGCAGCGAA
TCCACTAGTTACCGTCTCTGACTTGACGATGTTACCCTGAAACCTAACTCCAAAGTGTATCGACTCGA
GTTACAAAAGTCTTAATCACTCCTGGAAAAGTCAGATGGATCTGCGGAAACTGCTTAGAAAAGTGCATG
TAGAGAGGAGCCAGGTGGAACCCCTTTACCAATAAGGAAAATATGGAAACAGGAACAGGACTGACTCC
AGTGATGACGCAGGCCTTAAGGAGAAAAGTTTCAGCTGGCTCACCTAGAAGCCAACTCCAACTCTGCCA
CTTTCTACAAGCAGCTTTGATGAACAAAAC

ACGCGTACGCGGCCGCTCGAGCAGAAACTCATCTCAGAAGAGGATCTGGCAGCAAATGATATCCTGGATT
ACAAGGATGACGACGATAAGGTTTAA



[View online »](#)

Protein Sequence: >RC201889 protein sequence
 Red=Cloning site Green=Tags(s)

MPKFKQRRRKLKAKAERLFKKKEASHFQSKLITPPPPPPSPERVGISSIDISQSRSWLTSSWNFNFPNIR
 DAIKLWTRVWSIYSWCQNCITQSLVLDKTIFFPSRICHRELYSVKQQFCILESKLCKLQEALKTISESS
 SCPSCGQTCHMSGKLTNVPACVLITPGDSKAVLPPTLPQFASHFPPPPPPPLPPPPPLAPVLLRKPSL
 AKALQAGPLKKDGPMTITVKDLLTVKLLKKTQSLDEKRKLIIPSPKARNPLVTVSDLQHVTLKPNKVLSTR
 VTNVLIITPGKSQMDLRKLLRKVDVERSPPGGTPLTNKENMETGTGLTPVMTQALRRKFQLAHPRSPTPTLP
 LSTSSFDEQN

TRTRPLEQKLISEEDLAANDILDYKDDDDKV

Chromatograms: https://cdn.origene.com/chromatograms/mk6302_g04.zip

Restriction Sites: Sgfl-MluI

Cloning Scheme:

Cloning sites used for ORF Shuttling:



* The last codon before the Stop codon of the ORF

ACCN: NM_018304

ORF Size: 1080 bp

OTI Disclaimer: The molecular sequence of this clone aligns with the gene accession number as a point of reference only. However, individual transcript sequences of the same gene can differ through naturally occurring variations (e.g. polymorphisms), each with its own valid existence. This clone is substantially in agreement with the reference, but a complete review of all prevailing variants is recommended prior to use. [More info](#)

OTI Annotation: This clone was engineered to express the complete ORF with an expression tag. Expression varies depending on the nature of the gene.

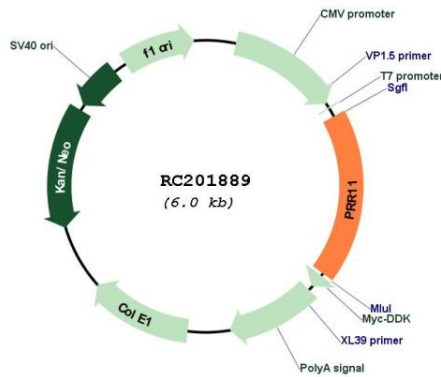
Components: The ORF clone is ion-exchange column purified and shipped in a 2D barcoded Matrix tube containing 10ug of transfection-ready, dried plasmid DNA (reconstitute with 100 ul of water).

Reconstitution Method:

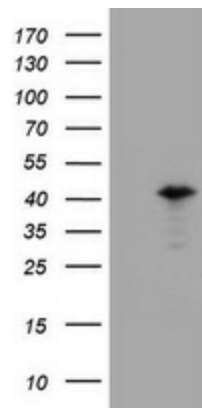
1. Centrifuge at 5,000xg for 5min.
2. Carefully open the tube and add 100ul of sterile water to dissolve the DNA.
3. Close the tube and incubate for 10 minutes at room temperature.
4. Briefly vortex the tube and then do a quick spin (less than 5000xg) to concentrate the liquid at the bottom.
5. Store the suspended plasmid at -20°C. The DNA is stable for at least one year from date of shipping when stored at -20°C.

RefSeq: [NM_018304.4](#)
RefSeq Size: 6487 bp
RefSeq ORF: 1083 bp
Locus ID: 55771
UniProt ID: [Q96HE9](#)
Cytogenetics: 17q22
MW: 40.1 kDa
Gene Summary: Plays a critical role in cell cycle progression.[UniProtKB/Swiss-Prot Function]

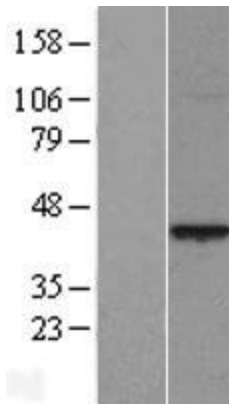
Product images:



Circular map for RC201889



HEK293T cells were transfected with the pCMV6-ENTRY control (Cat# [PS100001], Left lane) or pCMV6-ENTRY PRR11 (Cat# RC201889, Right lane) cDNA for 48 hrs and lysed. Equivalent amounts of cell lysates (5 ug per lane) were separated by SDS-PAGE and immunoblotted with anti-PRR11 (Cat# [TA800449]). Positive lysates [LY413150] (100ug) and [LC413150] (20ug) can be purchased separately from OriGene.



Western blot validation of overexpression lysate (Cat# [LY413150]) using anti-DDK antibody (Cat# [TA50011-100]). Left: Cell lysates from untransfected HEK293T cells; Right: Cell lysates from HEK293T cells transfected with RC201889 using transfection reagent MegaTran 2.0 (Cat# [TT210002]).