

## Product datasheet for RC201886L1

### Ephrin B1 (EFNB1) (NM\_004429) Human Tagged Lenti ORF Clone

#### Product data:

|                           |  |
|---------------------------|--|
| Product Type:             | Expression Plasmids  |
| Product Name:             | Ephrin B1 (EFNB1) (NM_004429) Human Tagged Lenti ORF Clone     |
| Tag:                      | Myc-DDK  |
| Symbol:                   | Ephrin B1  |
| Synonyms:                 | CFND; CFNS; EFB1; EFL3; Elk-L; EPLG2; LERK2                    |
| Mammalian Cell Selection: | None   |
| Vector:                   | pLenti-C-Myc-DDK (PS100064)                                    |
| E. coli Selection:        | Chloramphenicol (34 ug/mL)                                     |
| ORF Nucleotide Sequence:  | The ORF insert of this clone is exactly the same as(RC201886). |
| Restriction Sites:        | SgfI-MluI  |
| Cloning Scheme:           |  |

Cloning sites used for ORF Shuttling:



\* The last codon before the Stop codon of the ORF.

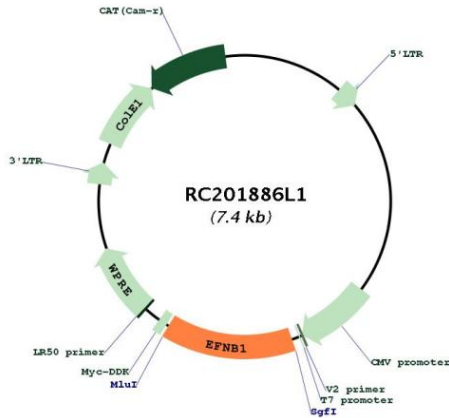
|           |           |
|-----------|-----------|
| ACCN:     | NM_004429 |
| ORF Size: | 1038 bp   |



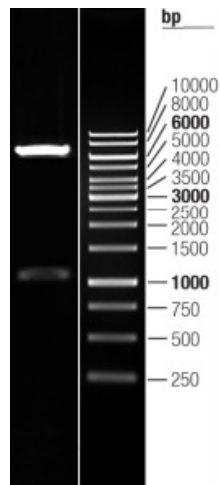
[View online >](#)

|                               |   |
|-------------------------------|---|
| <b>OTI Disclaimer:</b>        | The molecular sequence of this clone aligns with the gene accession number as a point of reference only. However, individual transcript sequences of the same gene can differ through naturally occurring variations (e.g. polymorphisms), each with its own valid existence. This clone is substantially in agreement with the reference, but a complete review of all prevailing variants is recommended prior to use. <a href="#">More info</a>  |
| <b>OTI Annotation:</b>        | This clone was engineered to express the complete ORF with an expression tag. Expression varies depending on the nature of the gene.  |
| <b>Components:</b>            | The ORF clone is ion-exchange column purified and shipped in a 2D barcoded Matrix tube containing 10ug of transfection-ready, dried plasmid DNA (reconstitute with 100 ul of water).  |
| <b>Reconstitution Method:</b> | <ol style="list-style-type: none"><li>1. Centrifuge at 5,000xg for 5min.</li><li>2. Carefully open the tube and add 100ul of sterile water to dissolve the DNA.</li><li>3. Close the tube and incubate for 10 minutes at room temperature.</li><li>4. Briefly vortex the tube and then do a quick spin (less than 5000xg) to concentrate the liquid at the bottom.</li><li>5. Store the suspended plasmid at -20°C. The DNA is stable for at least one year from date of shipping when stored at -20°C.</li></ol> |
| <b>RefSeq:</b>                | <a href="#">NM_004429.3</a>   |
| <b>RefSeq Size:</b>           | 3344 bp   |
| <b>RefSeq ORF:</b>            | 1041 bp   |
| <b>Locus ID:</b>              | 1947  |
| <b>UniProt ID:</b>            | <a href="#">P98172</a>  |
| <b>Cytogenetics:</b>          | Xq13.1  |
| <b>Domains:</b>               | Ephrin  |
| <b>Protein Families:</b>      | Druggable Genome, Transmembrane   |
| <b>Protein Pathways:</b>      | Axon guidance   |
| <b>MW:</b>                    | 38 kDa  |
| <b>Gene Summary:</b>          | The protein encoded by this gene is a type I membrane protein and a ligand of Eph-related receptor tyrosine kinases. It may play a role in cell adhesion and function in the development or maintenance of the nervous system. [provided by RefSeq, Jul 2008]   |

Product images:



Circular map for RC201886L1



Double digestion of RC201886L1 using SgfI and MluI