

Product datasheet for RC201886

Ephrin B1 (EFNB1) (NM_004429) Human Tagged ORF Clone

Product data:

Product Type:	Expression Plasmids
Product Name:	Ephrin B1 (EFNB1) (NM_004429) Human Tagged ORF Clone
Tag:	Myc-DDK
Symbol:	Ephrin B1
Synonyms:	CFND; CFNS; EFB1; EFL3; Elk-L; EPLG2; LERK2
Mammalian Cell Selection:	Neomycin
Vector:	pCMV6-Entry (PS100001)
E. coli Selection:	Kanamycin (25 ug/mL)
ORF Nucleotide Sequence:	>RC201886 ORF sequence Red=Cloning site Blue=ORF Green=Tags(s)

TTTTGTAATACGACTCACTATAGGGCGGCCGGAATTCGTCGACTGGATCCGGTACCGAGGAGATCTGCC
GCC**CGATCGCC**

ATGGCTCGGCCTGGGCAGCGTTGGCTCGGCAAGTGGCTTGTGGCGATGGTCGTGTGGCGCTGTGCCGGC
TCGCCACACCGCTGGCCAAGAACCTGGAGCCCGTATCCTGGAGCTCCCTCAACCCCAAGTTCCTGAGTGG
GAAGGGCTTGGTATCTATCCGAAAATTGGAGACAAGCTGGACATCATCTGCCCCGAGCAGAAGCAGGG
CGGCCCTATGAGTACTACAAGCTGTACCTGGTGGCCCTGAGCAGGCAGCTGCCTGTAGCACAGTCTCG
ACCCCAACGTGTTGGTCACCTGCAATAGGCCAGAGCAGGAAATACGCTTTACCATCAAGTCCAGGAGTT
CAGCCCCAACTACATGGGCCTGGAGTTCAGAAGCACCATGATTACTACATTACCTCAACATCCAATGGA
AGCCTGGAGGGGCTGAAAACCGGGAGGGCGGTGTGTGCCGCACACGCACCATGAAGATCATCATGAAGG
TTGGGCAAGATCCCAATGCTGTGACGCCTGAGCAGCTGACTACCAGCAGGCCCAGCAAGGAGGCAGACAA
CACTGTCAAGATGGCCACACAGGCCCTGGTAGTCGGGGCTCCCTGGGTGACTCTGATGGCAAGCATGAG
ACTGTGAACCAGGAAGAGAAGAGTGGCCAGGTGCAAGTGGGGCAGCAGCGGGGACCCTGATGGCTTCT
TCAACTCCAAGGTGGCATTGTTTCGGCTGTGGTGGCGGTTGCGTCATCTTCTGCTCATCATCATCTT
CCTGACGGTCTACTACTGAAGTACGCAAGCGGCACCGCAAGCACACAGCAGCGGGCGGCTGCCCTC
TCGCTCAGTACCCTGGCCAGTCCAAGGGGGCAGTGGCACAGCGGGCACCAGCCAGCGACATCATCA
TTCCCTTACGGACTACAGAGAACAACACTACTGCCCCACTATGAGAAGGTGAGTGGGGACTACGGGCCCC
TGCTACATCGTCCAAGAGATGCCGCCCCAGAGCCCGGCAACATCTACTACAAGGTC

ACGCGTACGCGGCCGCTCGAGCAGAACTCATCTCAGAAGAGGATCTGGCAGCAATGATATCCTGGATT
ACAAGGATGACGACGATAAGGTTTAA



[View online »](#)

Protein Sequence: >RC201886 protein sequence
Red=Cloning site Green=Tags(s)

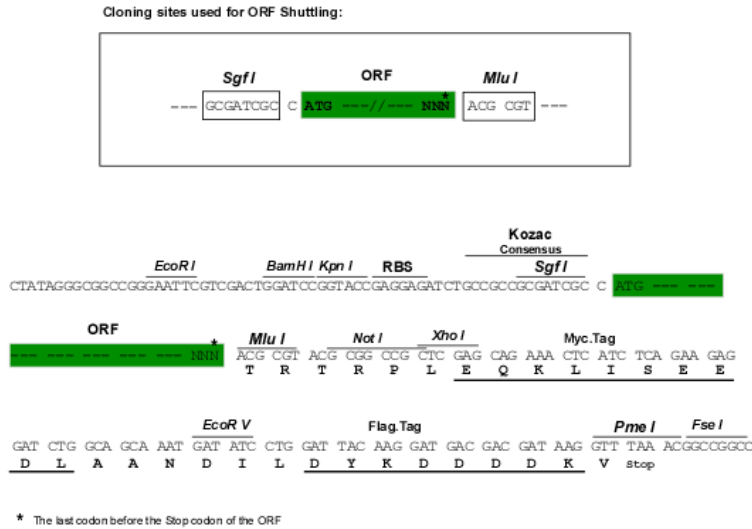
MARPGQRWLGKWL VAMVVWALCRLATPLAKNLEPVSWSSLNPKFLSGKGLVIYPKIGDKLDIICPRAEAG
 RPYEYKLYLVRPEQAAACSTVLDPNVLVTCNRPEQEIIRFTIKFQEFSPNYMGLFEKHHHDYYITSTNSG
 SLEGLNREGGVCRTTRMKIIMKVGQDPNAVTPPEQLTTSRPSKEADNTVKMATQAPGSRGSLGSDSGKHE
 TVNQEEKSGPGASGGSSGDPDGFNFNSKVALFAAVGAGCVIFLLIIFLTVLLLLKLRKRHRKHTQQRAAAL
 SLSTLSPKGGSGTAGTEPSDIIIPLRTTENNYCPHYEKVSGDYGHPVYIVQEMPQPSPANIYYK

TRTRPLEQKLISEEDLAANDILDYKDDDDKV

Chromatograms: https://cdn.origene.com/chromatograms/mk6138_h01.zip

Restriction Sites: SgfI-MluI

Cloning Scheme:



ACCN: NM_004429

ORF Size: 1038 bp

OTI Disclaimer: The molecular sequence of this clone aligns with the gene accession number as a point of reference only. However, individual transcript sequences of the same gene can differ through naturally occurring variations (e.g. polymorphisms), each with its own valid existence. This clone is substantially in agreement with the reference, but a complete review of all prevailing variants is recommended prior to use. [More info](#)

OTI Annotation: This clone was engineered to express the complete ORF with an expression tag. Expression varies depending on the nature of the gene.

Components: The ORF clone is ion-exchange column purified and shipped in a 2D barcoded Matrix tube containing 10ug of transfection-ready, dried plasmid DNA (reconstitute with 100 ul of water).

Reconstitution Method:

1. Centrifuge at 5,000xg for 5min.
2. Carefully open the tube and add 100ul of sterile water to dissolve the DNA.
3. Close the tube and incubate for 10 minutes at room temperature.
4. Briefly vortex the tube and then do a quick spin (less than 5000xg) to concentrate the liquid at the bottom.
5. Store the suspended plasmid at -20°C. The DNA is stable for at least one year from date of shipping when stored at -20°C.

Note: Plasmids are not sterile. For experiments where strict sterility is required, filtration with 0.22um filter is required.

RefSeq: [NM_004429.5](#)

RefSeq Size: 3344 bp

RefSeq ORF: 1041 bp

Locus ID: 1947

UniProt ID: [P98172](#)

Cytogenetics: Xq13.1

Domains: Ephrin

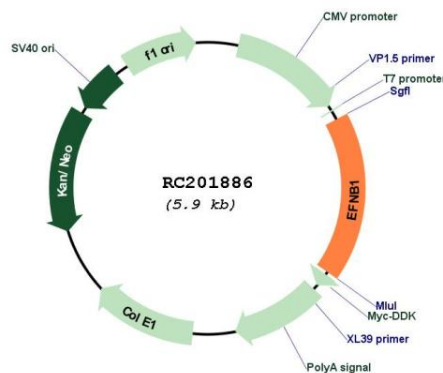
Protein Families: Druggable Genome, Transmembrane

Protein Pathways: Axon guidance

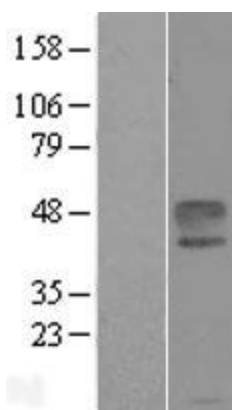
MW: 38 kDa

Gene Summary: The protein encoded by this gene is a type I membrane protein and a ligand of Eph-related receptor tyrosine kinases. It may play a role in cell adhesion and function in the development or maintenance of the nervous system. [provided by RefSeq, Jul 2008]

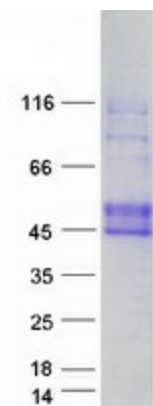
Product images:



Circular map for RC201886



Western blot validation of overexpression lysate (Cat# [LY401409]) using anti-DDK antibody (Cat# [TA50011-100]). Left: Cell lysates from untransfected HEK293T cells; Right: Cell lysates from HEK293T cells transfected with RC201886 using transfection reagent MegaTran 2.0 (Cat# [TT210002]).



Coomassie blue staining of purified EFNB1 protein (Cat# [TP301886]). The protein was produced from HEK293T cells transfected with EFNB1 cDNA clone (Cat# RC201886) using MegaTran 2.0 (Cat# [TT210002]).