

Product datasheet for **RC201884**

STAMBPL1 (NM_020799) Human Tagged ORF Clone

Product data:

Product Type:	Expression Plasmids
Product Name:	STAMBPL1 (NM_020799) Human Tagged ORF Clone
Tag:	Myc-DDK
Symbol:	STAMBPL1
Synonyms:	ALMalpha; AMSH-FP; AMSH-LP; bA399O19.2
Mammalian Cell Selection:	Neomycin
Vector:	pCMV6-Entry (PS100001)
E. coli Selection:	Kanamycin (25 ug/mL)



[View online »](#)

ORF Nucleotide Sequence:

>RC201884 ORF sequence
 Red=Cloning site Blue=ORF Green=Tags(s)

TTTTGTAATACGACTCACTATAGGGCGGCCGGAATTCGTCGACTGGATCCGGTACCGAGGAGATCTGCC
 GCC**CGGATCGCC**

ATGGATCAGCCTTTACTGTGAATTCTCTGAAAAAGTTAGCTGCTATGCCTGACCATACAGATGTTTCCC
 TAAGCCCAGAAGAGCGAGTCCGTGCCCTAAGCAAGCTTGGTTGTAATATCACCATCAGTGAAGACATCAC
 TCCACGACGTTACTTTAGGTCTGGAGTAGAGATGGAGAGGATGGCGTCTGTGATTTGGAAGAAGGAAAT
 TTGAAAAATGCCTTTGTTCTTTATAATAAATTTATAACCTTATTTGTAGAAAAGCTTCTAACCATCGAG
 ATTACCAGCAATGTGCAGTACCTGAAAAGCAGGATATTATGAAGAACTGAAGGAGATTGCATCCCAAG
 GACAGATGAATTGAAAAACGACCTTTTAAAGAAATATAACGTAGAATACCAAGAATATTTGCAAAGCAA
 AACAAATATAAGCTGAAATTCTCAAAAAATTGGAGCATCAGAGATTGATAGAGGCAGAAAGGAAGCGGA
 TTGCTCAGATGCCCGAGCAGCTAGAATCGGAGCAGTTCTGTTTTTGAAGATCAACTCAAGAAGCA
 AGAGTTAGCCGAGGTCAAATGCGAAGTCAGCAAACCTCAGGGCTGTGAGCAGATTGATGGGAGCGCT
 TTGTCCTGCTTTTCCACACACCAGAACAATTCCTTGTGTAATGATTTGCAGATCAACCTAATAAAAGTG
 ATGCAACCAATTATGCTAGCCACTCTCCTCCTGTAAACAGGGCCTAACACCAGCTGCTACTCTAAGTGC
 GTTTCAGAATTTAGTGGTTGAAGGACTGCGATGTGTAGTTTTGCCAGAAGATCTTTGCCACAAATTTCTG
 CAACTGGCAGAATCTAATACAGTGAAGGAAATAGAAAACCTGTGGAATACTCTGTGAAAACCTGACACATA
 ATGAATTTACTATTACCCATGTAATTGTGCCAAAGCAGTCTGCGGGACCAGACTATTGTGACATGGAGAA
 TGTAGAGGAATATTCAATGTTCCAGGATCAACATGATCTCCTCACTCTAGGATGGATCCATACACATCCC
 ACTCAAACCTGCATTTTATCCAGCGTTGATCTTACACTCACTGTTCTATCAACTCATGTTGCCAGAGG
 CCATTGCCATTGTTGCTCACAAAGCATAAAGACACTGGCATCTCAGGCTCACCAATGCTGGCATGCT
 TGAGGTTTCTGCTTGTAATAAAAAAGGGCTTTTCATCCACACACCAAGGAGCCAGGCTGTTCAATATATGC
 AAACATGTGTTGGTAAAAGACATAAAAAAATTGTGTTGGATCTGAGG

ACGCGTACGCGGCCGCTCGAGCAGAACTCATCTCAGAAGAGGATCTGGCAGCAATGATATCCTGGATT
 ACAAGGATGACGACGATAAGGTTTAA

Protein Sequence:

>RC201884 protein sequence
 Red=Cloning site Green=Tags(s)

MDQPFTVNSLKKLAAMPDHTDVLSPEERVRLSKLGCNITISEDITPRRYFRSGVEMERMASVYLEEGN
 LENAFLVYNKFITLFEKLPNHRDYQCAVPEKQDIMKKLKEIAFPRTDELKNDLLKYNVEYQEYLQSK
 NKYKAEILKKLEHQRLIEAERKRIAQMRQQLESEQFLFFEDQLKKQELARGQMRSQQTSGLSEQIDGSA
 LSCFSTHQNNSLLNVFADQPNKSDATNYASHSPVNRALTPAATLSAVQNLVVEGLRCVLPEDLCHKFL
 QLAESNTVRGIETCGILCGKLTHNEFTITHVIVPKQSAGPDYCDMENVLEELFNVQDQHDLLTLGWIHTHP
 TQTAFLSSVDLHHTCSYQLMLPEAIAIVCSPKHKDTGIFRLTNAGMLEVSACKKKGFHPHTKEPRLFISIC
 KHVLVKDIKIIIVDLDR

TRTRPLEQKLISEEDLAANDILDYKDDDDKV

Chromatograms:

https://cdn.origene.com/chromatograms/mk6004_a09.zip

Restriction Sites:

Sgfl-Mlul

Cloning Scheme:


ACCN: NM_020799

ORF Size: 1308 bp

OTI Disclaimer: The molecular sequence of this clone aligns with the gene accession number as a point of reference only. However, individual transcript sequences of the same gene can differ through naturally occurring variations (e.g. polymorphisms), each with its own valid existence. This clone is substantially in agreement with the reference, but a complete review of all prevailing variants is recommended prior to use. [More info](#)

OTI Annotation: This clone was engineered to express the complete ORF with an expression tag. Expression varies depending on the nature of the gene.

Components: The ORF clone is ion-exchange column purified and shipped in a 2D barcoded Matrix tube containing 10ug of transfection-ready, dried plasmid DNA (reconstitute with 100 ul of water).

- Reconstitution Method:**
1. Centrifuge at 5,000xg for 5min.
 2. Carefully open the tube and add 100ul of sterile water to dissolve the DNA.
 3. Close the tube and incubate for 10 minutes at room temperature.
 4. Briefly vortex the tube and then do a quick spin (less than 5000xg) to concentrate the liquid at the bottom.
 5. Store the suspended plasmid at -20°C. The DNA is stable for at least one year from date of shipping when stored at -20°C.

Note: Plasmids are not sterile. For experiments where strict sterility is required, filtration with 0.22um filter is required.

RefSeq: [NM_020799.2](#), [NP_065850.1](#)

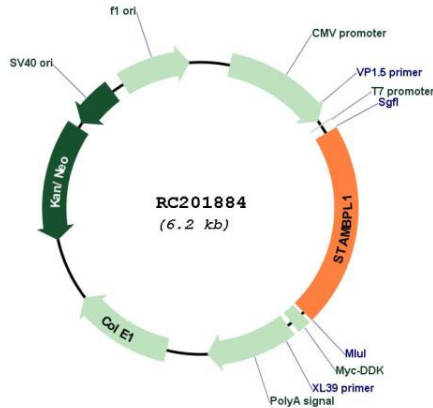
RefSeq Size: 2094 bp

RefSeq ORF: 1311 bp

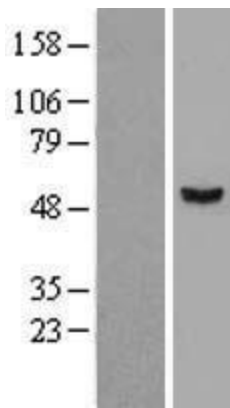
Locus ID: 57559

UniProt ID: [Q96FI0](#)
Cytogenetics: 10q23.31
Protein Families: Druggable Genome, Protease
MW: 49.8 kDa
Gene Summary: Zinc metalloprotease that specifically cleaves 'Lys-63'-linked polyubiquitin chains. Does not cleave 'Lys-48'-linked polyubiquitin chains.[UniProtKB/Swiss-Prot Function]

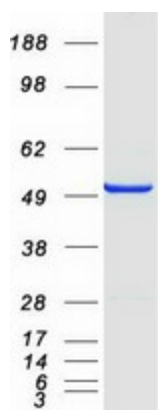
Product images:



Circular map for RC201884



Western blot validation of overexpression lysate (Cat# [LY402811]) using anti-DDK antibody (Cat# [TA50011-100]). Left: Cell lysates from untransfected HEK293T cells; Right: Cell lysates from HEK293T cells transfected with RC201884 using transfection reagent MegaTran 2.0 (Cat# [TT210002]).



Coomassie blue staining of purified STAMBPL1 protein (Cat# [TP301884]). The protein was produced from HEK293T cells transfected with STAMBPL1 cDNA clone (Cat# RC201884) using MegaTran 2.0 (Cat# [TT210002]).