

## Product datasheet for RC201878

### C20orf30 (TMEM230) (NM\_014145) Human Tagged ORF Clone

#### Product data:

**Product Type:** Expression Plasmids  
**Product Name:** C20orf30 (TMEM230) (NM\_014145) Human Tagged ORF Clone  
**Tag:** Myc-DDK  
**Symbol:** C20orf30  
**Synonyms:** C20orf30; dj1116H23.2.1; HSPC274  
**Mammalian Cell Selection:** Neomycin  
**Vector:** pCMV6-Entry (PS100001)  
**E. coli Selection:** Kanamycin (25 ug/mL)  
**ORF Nucleotide Sequence:** >RC201878 ORF sequence  
 Red=Cloning site Blue=ORF Green=Tags(s)

TTTTGTAATACGACTCACTATAGGGCGGCCGGAATTCGTCGACTGGATCCGGTACCGAGGAGATCTGCC  
 GCCCGGATCGCC

ATGATGCCGTCCCGTACCAACCTGGCTACTGGAATCCCCAGTAGTAAAGTGAAATATTCAAGGCTCTCCA  
 GCACAGACGATGGCTACATTGACCTTCAGTTTAAGAAAACCCCTCCTAAGATCCCTTATAAGGCCATCGC  
 ACTTGCCACTGTGCTGTTTTGATTGGCGCTTCTCATTATTATAGGCTCCCTCCTGCTGTCAGGCTAC  
 ATCAGCAAAGGGGGGCGAGACCGGGCCGTTCCAGTGTGATCATTGGCATTCTGGTGTCTCCTACCCGGAT  
 TTTACCACCTGCGCATCGCTTACTATGCATCAAAGGCTACCGTGCTTACTCCTATGATGACATTCCAGA  
 CTTTGATGAC

ACGCGTACGCGGCCGCTCGAGCAGAACTCATCTCAGAAGAGGATCTGGCAGCAAATGATATCCTGGATT  
 ACAAGGATGACGACGATAAGGTTTAA

**Protein Sequence:** >RC201878 protein sequence  
 Red=Cloning site Green=Tags(s)  
 MMPSRTNLTGIPSSKVKYSRLSSTDDGYIDLQFKTTPPKIPYKAIALATVLFLLIGAFLLIIGSLLLSGY  
 ISKGGADRAVPVLIIGILVFLPGFYHLRIAYYASKGYRAYSYYDDIPDFDD

TRTRPLEQKLISEEDLAANDILDYKDDDDKV

**Chromatograms:** [https://cdn.origene.com/chromatograms/mk6305\\_f08.zip](https://cdn.origene.com/chromatograms/mk6305_f08.zip)

**Restriction Sites:** SgfI-MluI



[View online »](#)

**Cloning Scheme:**


**ACCN:** NM\_014145

**ORF Size:** 360 bp

**OTI Disclaimer:** The molecular sequence of this clone aligns with the gene accession number as a point of reference only. However, individual transcript sequences of the same gene can differ through naturally occurring variations (e.g. polymorphisms), each with its own valid existence. This clone is substantially in agreement with the reference, but a complete review of all prevailing variants is recommended prior to use. [More info](#)

**OTI Annotation:** This clone was engineered to express the complete ORF with an expression tag. Expression varies depending on the nature of the gene.

**Components:** The ORF clone is ion-exchange column purified and shipped in a 2D barcoded Matrix tube containing 10ug of transfection-ready, dried plasmid DNA (reconstitute with 100 ul of water).

- Reconstitution Method:**
1. Centrifuge at 5,000xg for 5min.
  2. Carefully open the tube and add 100ul of sterile water to dissolve the DNA.
  3. Close the tube and incubate for 10 minutes at room temperature.
  4. Briefly vortex the tube and then do a quick spin (less than 5000xg) to concentrate the liquid at the bottom.
  5. Store the suspended plasmid at -20°C. The DNA is stable for at least one year from date of shipping when stored at -20°C.

**RefSeq:** [NM\\_014145.2](#)

**RefSeq Size:** 1699 bp

**RefSeq ORF:** 363 bp

**Locus ID:** 29058

**UniProt ID:** [Q96A57](#)

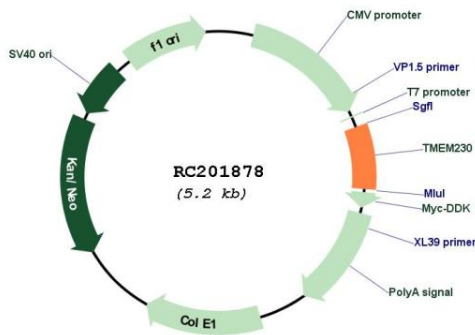
**Cytogenetics:** 20p13-p12.3

**Protein Families:** Transmembrane

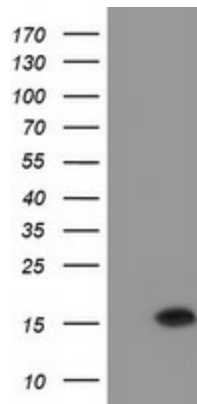
**MW:** 13.2 kDa

**Gene Summary:** This gene encodes a multi-pass transmembrane protein that belongs to the TMEM134/TMEM230 protein family. The encoded protein localizes to secretory and recycling vesicle in the neuron and may be involved in synaptic vesicles trafficking and recycling. Mutations in this gene may be linked to familial Parkinson's disease. [provided by RefSeq, Mar 2017]

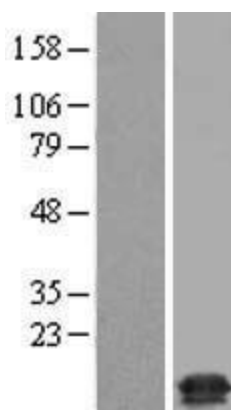
**Product images:**



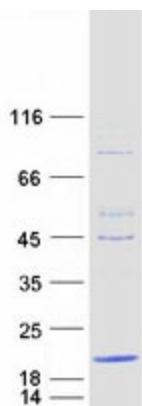
Circular map for RC201878



HEK293T cells were transfected with the pCMV6-ENTRY control (Cat# [PS100001], Left lane) or pCMV6-ENTRY C20orf30 (Cat# RC201878, Right lane) cDNA for 48 hrs and lysed. Equivalent amounts of cell lysates (5 ug per lane) were separated by SDS-PAGE and immunoblotted with anti-C20orf30 (Cat# [TA504888]). Positive lysates [LY415474] (100ug) and [LC415474] (20ug) can be purchased separately from OriGene.



Western blot validation of overexpression lysate (Cat# [LY423153]) using anti-DDK antibody (Cat# [TA50011-100]). Left: Cell lysates from untransfected HEK293T cells; Right: Cell lysates from HEK293T cells transfected with [RC224414] using transfection reagent MegaTran 2.0 (Cat# [TT210002]).



Coomassie blue staining of purified TMEM230 protein (Cat# [TP301878]). The protein was produced from HEK293T cells transfected with TMEM230 cDNA clone (Cat# RC201878) using MegaTran 2.0 (Cat# [TT210002]).