

Product datasheet for **RC201875**

KIAA0020 (PUM3) (NM_014878) Human Tagged ORF Clone

Product data:

Product Type:	Expression Plasmids
Product Name:	KIAA0020 (PUM3) (NM_014878) Human Tagged ORF Clone
Tag:	Myc-DDK
Symbol:	KIAA0020
Synonyms:	HA-8; HLA-HA8; KIAA0020; PEN; PUF-A; PUF6; XTP5
Mammalian Cell Selection:	Neomycin
Vector:	pCMV6-Entry (PS100001)
E. coli Selection:	Kanamycin (25 ug/mL)



[View online »](#)

**ORF Nucleotide
Sequence:**

>RC201875 ORF sequence
 Red=Cloning site Blue=ORF Green=Tags(s)

TTTTGTAATACGACTCACTATAGGGCGGCCGGAATTCGTCGACTGGATCCGGTACCGAGGAGATCTGCC
 GCC**CGCATCGCC**

ATGGAAGTTAAAGGGAAAAAGCAATTCACAGGAAAGAATACAAAGACAGCACAAGAAAAACAGATTTCC
 ATAAAAATAGTGATTCTGGTTCTTCAAAGACATTTCCAACAAGGAAAGTTGCTAAAGAAGGTGGACCTAA
 AGTCACATCTAGGAACCTTGAGAAAAAGTATCACAAAACCTGGGAAAAAGGGTGTAAAGCAGTTCAAGAAT
 AAGCAGCAAGGGGACAAATCACCAAAGAACAATTCAGCCGGCAATAAATTCACAAGAAGAGAAAAAT
 TCCAGCCAGATGGTAGAAGCGATGAATCAGCAGCCAAGAAGCCCAATGGGATGACTTCAAAAAGAAGAA
 GAAAGAACTGAAGCAAAGCAGACAACCTCAGTGATAAAACCAACTATGACATTGTTGTTCCGGCAAAGCAG
 ATGTGGGAGATTTAAGAAGAAAAGACTGTGACAAAGAAAAAGAGTAAAGTTAATGAGTGATTTGCAGA
 AGTTGATTCAAGGAAAAATAAAACCTTGCATTTGCACACGATTCAACTCGTGTGATCCAGTGTTACAT
 TCAGTATGGTAATGAAGAACAGAGAAAAACAGGCTTTTGAAGAATTGCGAGATGATTTGGTTGAGTTAAGT
 AAAGCCAAATATTCGAGAAATATTGTTAAGAAATTTCTCATGTATGGAAGTAAACCACAGATTGCAGAGA
 TAATCAGAAGTTTTAAAGGCCACGTGAGGAAGATGCTGCGGCATGCGGAAGCATCAGCCATCGTGGAGTA
 CGCATACAATGACAAAGCCATTTTGAGCAGAGGAACATGCTGACGGAAGAGCTCTATGGGAACACATTT
 CAGCTTTACAAGTCAGCAGATCACCCAACCTCTGGACAAAGTGTTAGAGTTACAGCCAGAAAAATAGAAC
 TTATTATGGATGAAATGAAACAGATTCTAACTCCAATGGCCAAAAGGAAGCTGTGATTAAGCACTCATT
 GGTGCATAAAGTATTCTTGGACTTTTTACCTATGCACCCCCAAACTCAGATCAGAAATGATTGAAGCC
 ATCCGCGAAGCGGTGGTCTACCTGGCACACACACAGATGGCGCCAGAGTGGCCATGCACCTGCCTGTGGC
 ATGGCACGCCAAGGACAGGAAAGTGATTGTGAAAACAATGAAGACTTATGTTGAAAAGGTGGCTAATGG
 CCAATACTCCCATTTGGTTTTACTGGCGCATTTGATTGTATTGATGATACTAAGCTTGTGAAGCAGATA
 ATCATATCAGAAATTATCAGTTCATTGCCTAGCATAGTAAATGACAAATATGGAAGGAAGGTCTATTGT
 ACTTACTAAGCCCCAGAGATCCTGCACATACAGTACGAGAAATCATTGAAGTTCTGCAAAAAGGAGATGG
 AAATGCACACAGTAAGAAAGATACAGAGGTCGCGCAGACGGGAGCTCCTAGAATCCATTTCTCCAGCTTG
 TTAAGCTACCTGCAAGAACACGCCCAAGAAGTGGTGCTAGATAAGTCTGCGTGTGTGTTGGTGTCTGACA
 TTCTGGGATCTGCCACTGGAGACGTTCAGCCTACCATGAATGCCATCGCCAGCTTGGCAGCAACAGGACT
 GCATCCTGGTGGCAAGGACGGAGAGCTTACATTGCAGAACATCCTGCAGGACATCTAGTCTGAAGTGG
 TTAATAGAGCAAGATAAAAAGATGAAAGAAAATGGGAGAGAAGGTTGTTTTGCAAAAACACTTGTAGAGC
 ATGTTGGTATGAAGAACCTGAAGTCTGGGCTAGTGTAATCGAGGTGCCATTATTCTTTCTAGCCTCCT
 CCAGAGTTGTGACCTGGAAGTTGCAAAACAAGTCAAAGCTGCACTGAAAAGCTTGATTCTACATTGGAA
 AAAACCAAAGCACCAGCAAAGGAATAGAAATCTACTGAAAAACTGAGCACAA

ACGCGTACGCGGCCGCTCGAGCAGAAACTCATCTCAGAAGAGGATCTGGCAGCAATGATATCCTGGATT
 ACAAGGATGACGACGATAAGGTTTAA

Protein Sequence: >RC201875 protein sequence
Red=Cloning site Green=Tags(s)

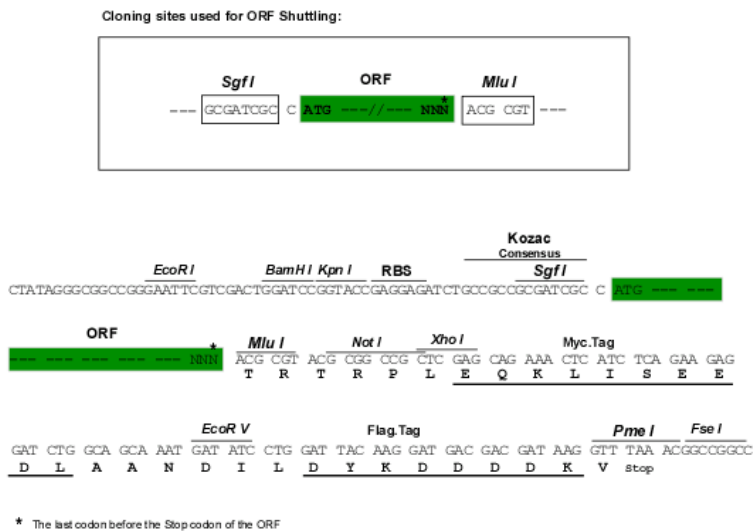
```
MEVKGKKQFTGKNTKTAQEKNRFHKNSDSGSSKTFPTRKVAKEGGPKVTSRNFESISITKLGKKGVKQFKN
KQQGDKSPKNKFQANKFNKKRFQPDGRSDESAAKPKWDDFKKKKKELKQSRQLSDKTNVDIVRAKQ
MWEILRRKDCDEKRVKLMSDLQKLIQGIKTI AF AHDSTRVIQCYIQYGNEEQRKQAFEELRDDLVELS
KAKYSRNIYKKFLMYGSKPQIAEII RSFKGHVRKMLRHAEASAI VEYAYNDKAI LEQRNMLTEEL YGNTF
QLYKSADHPTLDKVL ELQPEKLELIMDEM KQILTPMAQKEAVIKHSLVHKVFLDFFTYAPPKLRSEMIEA
IREAVVYL AHTHDGARVAMHCLWHGTPKDRKVI VTKMKT YVEKVANGQYSHLVLLA AFD CIDDTKLVKQI
IISEIISSLPSIVNDKYGRKVLLYLLSPRPAHTVREII EVLQKGDGNAH SKKDTEVRRRELLESISPAL
LSYLQEHAQEVVLDK SACVLVSDILGSATGDVQPTMNAIASLAATGLHPGGKDGELHIAEHPAGHLVLKW
LIEQDKMKENGREGCF AKTLVEHVG MKNLKS WASVNRGAIILSLLQSCDLEVANKVKAALKSLIPTLE
KTKSTSKGIEILLEK LST
```

TRTRPLEQKLISEEDLAANDILDYKDDDDKV

Chromatograms: https://cdn.origene.com/chromatograms/mk6540_g08.zip

Restriction Sites: SgfI-MluI

Cloning Scheme:



ACCN: NM_014878

ORF Size: 1944 bp

OTI Disclaimer: The molecular sequence of this clone aligns with the gene accession number as a point of reference only. However, individual transcript sequences of the same gene can differ through naturally occurring variations (e.g. polymorphisms), each with its own valid existence. This clone is substantially in agreement with the reference, but a complete review of all prevailing variants is recommended prior to use. [More info](#)

OTI Annotation: This clone was engineered to express the complete ORF with an expression tag. Expression varies depending on the nature of the gene.

Components: The ORF clone is ion-exchange column purified and shipped in a 2D barcoded Matrix tube containing 10ug of transfection-ready, dried plasmid DNA (reconstitute with 100 ul of water).

Reconstitution Method:

1. Centrifuge at 5,000xg for 5min.
2. Carefully open the tube and add 100ul of sterile water to dissolve the DNA.
3. Close the tube and incubate for 10 minutes at room temperature.
4. Briefly vortex the tube and then do a quick spin (less than 5000xg) to concentrate the liquid at the bottom.
5. Store the suspended plasmid at -20°C. The DNA is stable for at least one year from date of shipping when stored at -20°C.

RefSeq: [NM_014878.4](#), [NP_055693.4](#)

RefSeq Size: 2232 bp

RefSeq ORF: 1947 bp

Locus ID: 9933

UniProt ID: [Q15397](#)

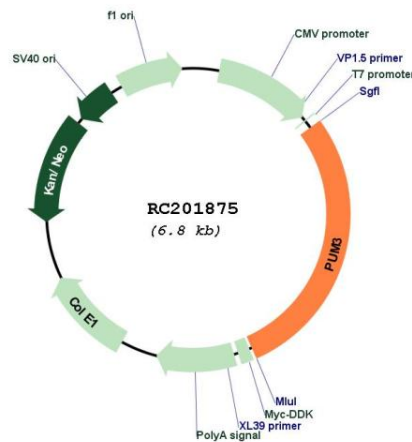
Cytogenetics: 9p24.2

Domains: PUF

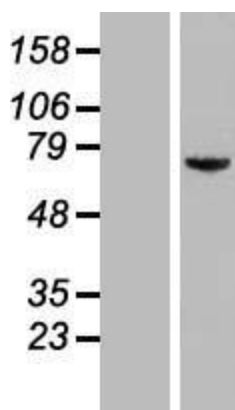
MW: 73.6 kDa

Gene Summary: Inhibits the poly(ADP-ribosyl)ation activity of PARP1 and the degradation of PARP1 by CASP3 following genotoxic stress (PubMed:21266351). Binds to double-stranded RNA or DNA without sequence specificity (PubMed:25512524). Involved in development of the eye and of primordial germ cells (By similarity).[UniProtKB/Swiss-Prot Function]

Product images:



Circular map for RC201875



Western blot validation of overexpression lysate (Cat# [LY414965]) using anti-DDK antibody (Cat# [TA50011-100]). Left: Cell lysates from untransfected HEK293T cells; Right: Cell lysates from HEK293T cells transfected with RC201875 using transfection reagent MegaTran 2.0 (Cat# [TT210002]).