

## Product datasheet for **RC201870**

### RRNAD1 (NM\_015997) Human Tagged ORF Clone

#### Product data:

Product Type:	Expression Plasmids
Product Name:	RRNAD1 (NM_015997) Human Tagged ORF Clone
Tag:	Myc-DDK
Symbol:	RRNAD1
Synonyms:	C1orf66; CGI-41; METTL25B
Mammalian Cell Selection:	Neomycin
Vector:	pCMV6-Entry (PS100001)
E. coli Selection:	Kanamycin (25 ug/mL)



[View online »](#)

**ORF Nucleotide Sequence:**

>RC201870 ORF sequence  
 Red=Cloning site Blue=ORF Green=Tags(s)

TTTTGTAATACGACTCACTATAGGGCGGCCGGAATTCGTCGACTGGATCCGGTACCGAGGAGATCTGCC  
 GCC**CGGATCGCC**

ATGCCGGCATCTCCGCCGAGGCTCTCTCATGAGGGGAGGAAGCAGCTAGCTGTTAACCTCACCCGTG  
 TCCTGGCACTCTACCGTTCCATCTTGGATGCCTACATCATCGAATTTTTACAGACAACCTATGGGACAC  
 ACTCCCTTGCTCATGGCAGGAAGCATTGGATGGACTGAAACCACCACAGCTGGCCACAATGCTGCTGGGG  
 ATGCCTGGGGAAGGGGAGGTCGTCAGGTACAGGTCAAGTGTGCCACTCACCTGCTGGCCCTGAAGTCCA  
 CGGCGTGTGCCCTGGCCTTTACCGGATGCCTGGCTTTCAGACCCCTCAGAATTCCTGGAGAACCCAG  
 CCAGAGCTCCCGACTAACAGCTCCATTCCGAAACATGTCAGGCCAAGAAGCAGCATGAGATCCGGAGG  
 CTGGGAGAGTTGGTGAAGAAGCTGAGTGATTTACAGGCTGCACCCAGGTTGTAGACGTGGGCTCAGGCC  
 AGGGCCATCTCTCCGCTTCATGGCTCTTGGCTGGGGTTGATGGTGAAGAGCATCGAAGGGGATCAGAG  
 ACTGGTGGAGAGAGCCAGCGCTGGACCAGGAGCTTCTGCAGGCTCTGGAGAAAGAGGAGAAGAGGAAC  
 CCGCAGGTGGTCCAACACAGCCCTCGTCACTCCCCACACCACGTGGTTAGGTGGGTAGACCCACAGCCC  
 TGTGTGAGGAGCTTCTGCTTCCACTGGAGAACCCGTGTCAGGGCAGGGCCCGCTTCTGCTCACAGGCC  
 CCACGCTGTGGGGATCTGAGTGTTCCTTGTGAGACACTTCTCCTGCTGCTGAGGTGGTGGCCCTG  
 GCCTCAGTGGGCTGTGCTACATGAAGCTGAGTGACCCTGGCGGCTACCCACTGAGTCAGTGGGTGGCTG  
 GGCTGCCTGGCTATGAATGCCCTACCGCTTCGGGAGGGGGCCATGCCCTGGAGGAATATGCTGA  
 GCGGCTACAGAAAGCTGGCCCTGGCCTTCGAACTACTGCTACCGTGCAGCACTGGAGACAGTCATCCGA  
 CGGGCCCGGCCGAGCTCCGTCGGCCAGGCGTGCAGGGTATCCCAGGGTCCACGAGCTCAAGATTGAAG  
 AATATGTGCAGCGGGGGCTACAGCGAGTGGGGCTAGATCCCAGCTGCCACTGAATCTGGCTGCCCTTCA  
 GGCCACCTGGCCAGGAGAACCGTGTGGTGGCCTTCTTCAGCCTGGCTCTACTGCTTGGCCACTGGTG  
 GAGACGCTTATTCTACTGACCGGCTGTGTACCTTCAGGAACAGCTTTTCCATGCTGAGCTCCTGCCCA  
 TCTTCACTGCTGAATCTCTCCAGAACTGGTCTGGTGGCCACCAAGATGCCCTGGGTGAGGCTCT  
 TTCTGTTCTGGAGACTGAAGACAGC

**ACGCGT**ACGCGGCCGCTCGAGCAGAACTCATCTCAGAAGAGGATCTGGCAGCAAATGATATCCTGGATT  
 ACAAGGATGACGACGATAAGGTTTAA

**Protein Sequence:**

>RC201870 protein sequence  
 Red=Cloning site Green=Tags(s)

MPGISARGLSHEGRKQLAVNLTRVLALYRSILDAYIEFFTDNLWDTLPCSWQEALDGLKPPQLATMLLG  
 MPGEDEVVYRYSVWPLTLLALKSTACALAFTRMPGFQTPSEFLENPSQSSRLTAPFRKHVRPKKQHEIRR  
 LGELVKKLSDFGTQVVDVSGQGHLSRFMALGLMLVKSIEGDQRLVERAQRDLQELLQALEKEEKRN  
 PQVVQTSRPHSPHHVVRWVDPALCEELLPLENPCQGRARLLLTGLHACGDLVALLRHFSCCPEVVAL  
 ASVGCYMKLSDPGGYPLSQWVAGLPGYELPYRLREGACHALEEYERLQKAGPLRTHCYRAALETVIR  
 RARPELRRPGVQGIPIRVHELKIEEYVQRGLQRVGLDPQLPLNLAALQAHLAQENRVVAFSLALLLAPLV  
 ETLILLDRLLYLQELFHAELLPIFSPELSPRNLVLVATKMPLGQALSVLETEDS

**TR**TRPLEQKLISEEDLAANDILDYKDDDDKV

**Chromatograms:**

[https://cdn.origene.com/chromatograms/mk6303\\_c06.zip](https://cdn.origene.com/chromatograms/mk6303_c06.zip)

**Restriction Sites:**

Sgfl-Mlul

**Cloning Scheme:**

Cloning sites used for ORF Shutting:


**ACCN:** NM\_015997

**ORF Size:** 1425 bp

**OTI Disclaimer:** The molecular sequence of this clone aligns with the gene accession number as a point of reference only. However, individual transcript sequences of the same gene can differ through naturally occurring variations (e.g. polymorphisms), each with its own valid existence. This clone is substantially in agreement with the reference, but a complete review of all prevailing variants is recommended prior to use. [More info](#)

**OTI Annotation:** This clone was engineered to express the complete ORF with an expression tag. Expression varies depending on the nature of the gene.

**Components:** The ORF clone is ion-exchange column purified and shipped in a 2D barcoded Matrix tube containing 10ug of transfection-ready, dried plasmid DNA (reconstitute with 100 ul of water).

**Reconstitution Method:**

1. Centrifuge at 5,000xg for 5min.
2. Carefully open the tube and add 100ul of sterile water to dissolve the DNA.
3. Close the tube and incubate for 10 minutes at room temperature.
4. Briefly vortex the tube and then do a quick spin (less than 5000xg) to concentrate the liquid at the bottom.
5. Store the suspended plasmid at -20°C. The DNA is stable for at least one year from date of shipping when stored at -20°C.

**RefSeq:** [NM\\_015997.2](#), [NP\\_057081.2](#)
**RefSeq Size:** 2283 bp

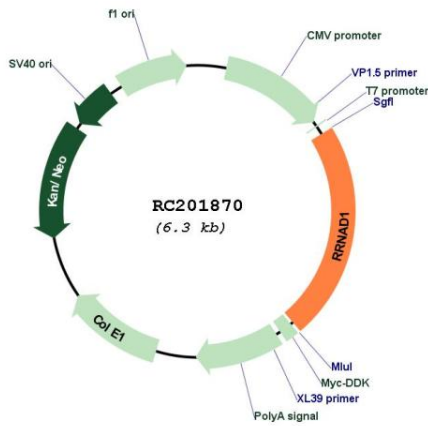
**RefSeq ORF:** 1428 bp

**Locus ID:** 51093

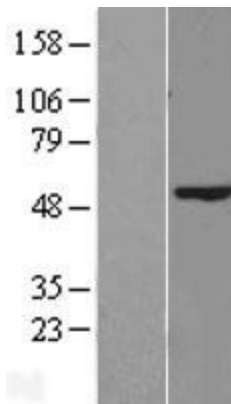
**UniProt ID:** [Q96FB5](#)
**Cytogenetics:** 1q23.1

MW: 53.1 kDa

**Product images:**



Circular map for RC201870



Western blot validation of overexpression lysate (Cat# [LY414258]) using anti-DDK antibody (Cat# [TA50011-100]). Left: Cell lysates from untransfected HEK293T cells; Right: Cell lysates from HEK293T cells transfected with RC201870 using transfection reagent MegaTran 2.0 (Cat# [TT210002]).



Coomassie blue staining of purified RRNAD1 protein (Cat# [TP301870]). The protein was produced from HEK293T cells transfected with RRNAD1 cDNA clone (Cat# RC201870) using MegaTran 2.0 (Cat# [TT210002]).