

## Product datasheet for **RC201868**

### CGI 62 (ZC2HC1A) (NM\_016010) Human Tagged ORF Clone

#### Product data:

Product Type:	Expression Plasmids
Product Name:	CGI 62 (ZC2HC1A) (NM_016010) Human Tagged ORF Clone
Tag:	Myc-DDK
Symbol:	CGI 62
Synonyms:	C8orf70; CGI-62; FAM164A
Mammalian Cell Selection:	Neomycin
Vector:	pCMV6-Entry (PS100001)
E. coli Selection:	Kanamycin (25 ug/mL)
ORF Nucleotide Sequence:	>RC201868 ORF sequence Red=Cloning site Blue=ORF Green=Tags(s)

TTTTGTAATACGACTCACTATAGGGCGCCGGGAATTCGTCGACTGGATCCGGTACCGAGGAGATCTGCC  
GCC**CGGATCGCC**

ATGGAGGGACTGGAAGAGAATGGAGGTGTTGTCCAAGTTGGAGAATTGTTACCTTGCAAGATTTGTGGAA  
GAACATTCTTTCCAGTAGCATTAAAAAACATGGACCCATTTGCCAGAAGACTGCAACTAAAAACGGAA  
GACTTTTGATTCAAGCAGACAGAGAGCTGAAGGAAGTATTTCCAACAGTAAAACCGCTCAAACCGAGG  
CCAGAACCACAAAGAAACCATTAATTGGAGAAGGAAACATGAAGAATTCATTGCTACCATAAGAGCAG  
CTAAAGGCCTTGATCAGGCCCTCAAAGAGGGTGGCAAACCTCCTCCTCCTCCACCTTCTTATGATCC  
TGATTATATTCAATGTCCATATTGTGAGAGGAGATTCAATGAAAATGCAGCTGATAGACATATAAATTC  
TGTAAGAAGCAGGCAGCAGTATTAGTAATAAAGGGAAATTTCTGCAGATACCAAAGGAAAACCAACT  
CTCGGACACAGGTGTATAAGCCACCCGCACTTAAAAAGTCAAATTCCTGGAAGTGCATCATCAGGATC  
TTCACGATTACCGCAGCCAAGTGGCGCTGGCAAACTGTTGTAGGTGTTCTTCAGGTAAAGTGTCTTCA  
AGTAGCAGCTCTTTGGGAAACAACTTCAGACCTGTCTCCCTCATAAAGGGATAGCAGCCCTCATG  
CAGGAGCTAATGTCAAACCCGAAATTCACACCACCTAGTTGGCAAGAAATCCTGCCCCAGGTGTGCT  
TACAAACAAAAGAAAAACATATACTGAGAGCTACATAGCCAGGCCAGATGGGGACTGTGCATCTTCCCTT  
AATGGTGGAAATATTAAGGCATTGAAGGACATTCACCTGGAACTTACCAAATTCGCCATGAGTGTG  
GGACTAAATACCCTGTAGAATGGGCCAAATTTTGTGTGAATGTGCATTGCAAGAATGATTCTA

**ACGCGT**ACGCGGCCGCTCGAGCAGAACTCATCTCAGAAGAGGATCTGGCAGCAATGATATCCTGGATT  
ACAAGGATGACGACGATAAGGTTTAA



[View online »](#)

**Protein Sequence:** >RC201868 protein sequence  
Red=Cloning site Green=Tags(s)

MEGLEENGGVVQVGE LLPCKICGR TFFPVALKKHGPICQKTATKKRKTFDSSRQRAEGTDIPTVKPLKPR  
 PEPPKPSNWRRKHEEF IATIRAAKGLDQALKEGGKLPPPPPSYDPDIQCPYCQRRFNENAADRHINF  
 CKEQAARISNKGKFSADTKGKPTSRTQVYKPPALKKSNSPGTASSGSSRLPQPSGAGKTVVGVPSGKVSS  
 SSSSLGNKLQTLSPSHKGI AAPHAGANVKPRNSTPPSLARNPAPGVL TNKRKTYTESYIARPDGDCASSL  
 NGGNIKGIEGHSPGNL PKFCHECGTKYPVEWAKFCCECGIRRMIL

TRTRPLEQKLISEEDLAANDILDYKDDDDKV

**Chromatograms:** [https://cdn.origene.com/chromatograms/mk6302\\_h01.zip](https://cdn.origene.com/chromatograms/mk6302_h01.zip)

**Restriction Sites:** SgfI-MluI

**Cloning Scheme:**



**ACCN:** NM\_016010

**ORF Size:** 975 bp

**OTI Disclaimer:** The molecular sequence of this clone aligns with the gene accession number as a point of reference only. However, individual transcript sequences of the same gene can differ through naturally occurring variations (e.g. polymorphisms), each with its own valid existence. This clone is substantially in agreement with the reference, but a complete review of all prevailing variants is recommended prior to use. [More info](#)

**OTI Annotation:** This clone was engineered to express the complete ORF with an expression tag. Expression varies depending on the nature of the gene.

**Components:** The ORF clone is ion-exchange column purified and shipped in a 2D barcoded Matrix tube containing 10ug of transfection-ready, dried plasmid DNA (reconstitute with 100 ul of water).

**Reconstitution Method:**

1. Centrifuge at 5,000xg for 5min.
2. Carefully open the tube and add 100ul of sterile water to dissolve the DNA.
3. Close the tube and incubate for 10 minutes at room temperature.
4. Briefly vortex the tube and then do a quick spin (less than 5000xg) to concentrate the liquid at the bottom.
5. Store the suspended plasmid at -20°C. The DNA is stable for at least one year from date of shipping when stored at -20°C.

**RefSeq:** [NM\\_016010.3](#)

**RefSeq Size:** 3352 bp

**RefSeq ORF:** 978 bp

**Locus ID:** 51101

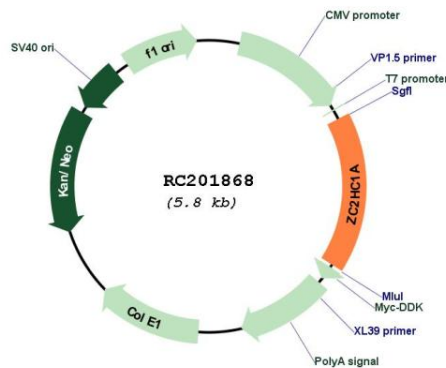
**UniProt ID:** [Q96GY0](#)

**Cytogenetics:** 8q21.13

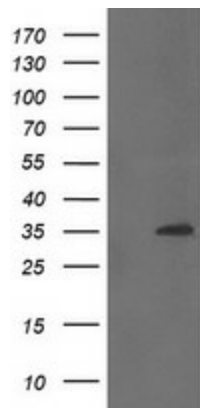
**Domains:** zf-C2H2

**MW:** 35.1 kDa

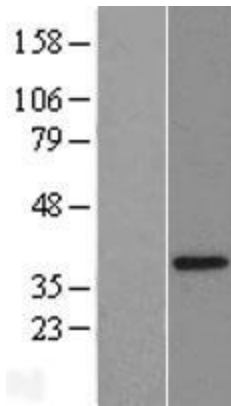
**Product images:**



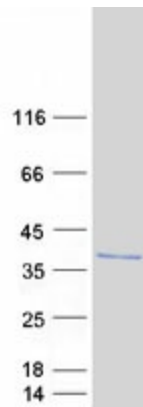
Circular map for RC201868



HEK293T cells were transfected with the pCMV6-ENTRY control (Cat# [PS100001], Left lane) or pCMV6-ENTRY FAM164A (Cat# RC201868, Right lane) cDNA for 48 hrs and lysed. Equivalent amounts of cell lysates (5 ug per lane) were separated by SDS-PAGE and immunoblotted with anti-FAM164A (Cat# [TA505191]). Positive lysates [LY414251] (100ug) and [LC414251] (20ug) can be purchased separately from OriGene.



Western blot validation of overexpression lysate (Cat# [LY414251]) using anti-DDK antibody (Cat# [TA50011-100]). Left: Cell lysates from untransfected HEK293T cells; Right: Cell lysates from HEK293T cells transfected with RC201868 using transfection reagent MegaTran 2.0 (Cat# [TT210002]).



Coomassie blue staining of purified ZC2HC1A protein (Cat# [TP301868]). The protein was produced from HEK293T cells transfected with ZC2HC1A cDNA clone (Cat# RC201868) using MegaTran 2.0 (Cat# [TT210002]).