

## Product datasheet for **RC201861**

### **RNF141 (NM\_016422) Human Tagged ORF Clone**

#### Product data:

Product Type:	Expression Plasmids
Product Name:	RNF141 (NM_016422) Human Tagged ORF Clone
Tag:	Myc-DDK
Symbol:	RNF141
Synonyms:	RFP141; ZFP26; ZNF230
Mammalian Cell Selection:	Neomycin
Vector:	pCMV6-Entry (PS100001)
E. coli Selection:	Kanamycin (25 ug/mL)
ORF Nucleotide Sequence:	>RC201861 ORF sequence Red=Cloning site Blue=ORF Green=Tags(s)

TTTTGTAATACGACTCACTATAGGGCGGCCGGAATTCGTCGACTGGATCCGGTACCGAGGAGATCTGCC  
GCC**CGATCGCC**

ATGGGACAGCAAATTTCCGATCAGACACAGTTGGTTATTAACAAGTTACCAGAAAAAGTAGCAAAACATG  
TTACGTTGGTTCGAGAGAGTGGCTCCTTAACCTTATGAAGAATTTCTCGGGAGAGTAGCTGAGCTTAATGA  
TGTAACGGCTAAAGTGGCTTCTGGCCAGGAAAAACATCTTCTTTGAGGTACAACCTGGGTCTGATTCC  
TCTGCTTTTGGAAAGTGGTGTACGGGTGGTCTGTACCAAGATTAACAAAAGCAGTGGCATTGTGGAGG  
CATCACGGATCATGAATTTATACAGTTTATTCAACTTTATAAAGATATCACAAGTCAAGCAGCAGGAGT  
ATTGGCACAGAGCTCCACCTCTGAAGAACCTGATGAAAACCTCATCCTCTGTAACATCTTGTGAGGCTAGT  
CTTTGGATGGGAAGGGTGAAGCAGCTGACCGATGAGGAGGAGTGTGTATCTGTATGGATGGGCGGGCTG  
ACCTCATCCTGCCTTGTGCTCACAGCTTTTGTGAGAAGTGTATTGATAAATGGAGTGATCGACACAGGAA  
TTGCCCTATTTGTCGCCTACAGATGACTGGAGCAAATGAATCTTGGGTGGTATCAGATGCACCCACTGAA  
GATGATATGGCTAACTATATTCTTAACATGGCTGATGAGGCAGGCCAGCCCCACAGGCCA

**ACGCGT**ACGCGGCCGCTCGAGCAGAACTCATCTCAGAAGAGGATCTGGCAGCAAATGATATCTGGATT  
ACAAGGATGACGACGATAAGGTTTAA


[View online »](#)

**Protein Sequence:** >RC201861 protein sequence  
 Red=Cloning site Green=Tags(s)

MGQQISDQTQLVINKLPEKVAKHVTLVRESGSLTYEEFLGRVAELNDVTAKVASGQEKHLLFEVQPGSDS  
 SAFWKVVVRVCTKINKSSGIVEASRIMNLYQFIQLYKDITSQAAGVLAQSSTSEEPDENSSSVTSCQAS  
 LWMGRVKQLTDEEECCICMDGRADLILPCAHSFCQKCIDKWSDRHRNCPICRLQMTGANESWVSDAPTE  
 DDMANYILNMADEAGQPHRP

TRTRPLEQKLISEEDLAANDILDYKDDDDKV

**Chromatograms:** [https://cdn.origene.com/chromatograms/mk6309\\_b01.zip](https://cdn.origene.com/chromatograms/mk6309_b01.zip)

**Restriction Sites:** SgfI-MluI

**Cloning Scheme:**



**ACCN:** NM\_016422

**ORF Size:** 690 bp

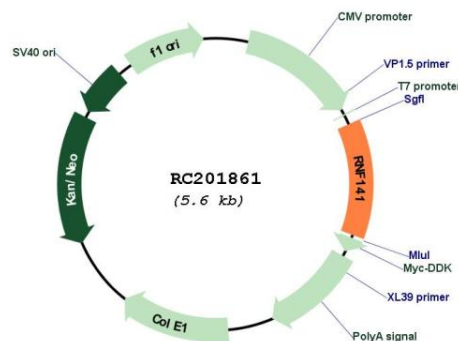
**OTI Disclaimer:** The molecular sequence of this clone aligns with the gene accession number as a point of reference only. However, individual transcript sequences of the same gene can differ through naturally occurring variations (e.g. polymorphisms), each with its own valid existence. This clone is substantially in agreement with the reference, but a complete review of all prevailing variants is recommended prior to use. [More info](#)

**OTI Annotation:** This clone was engineered to express the complete ORF with an expression tag. Expression varies depending on the nature of the gene.

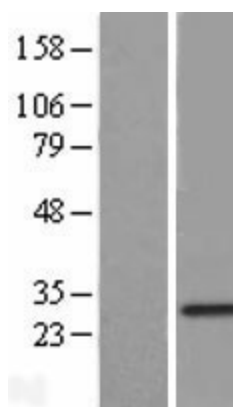
**Components:** The ORF clone is ion-exchange column purified and shipped in a 2D barcoded Matrix tube containing 10ug of transfection-ready, dried plasmid DNA (reconstitute with 100 ul of water).

<b>Reconstitution Method:</b>	<ol style="list-style-type: none"> <li>1. Centrifuge at 5,000xg for 5min.</li> <li>2. Carefully open the tube and add 100ul of sterile water to dissolve the DNA.</li> <li>3. Close the tube and incubate for 10 minutes at room temperature.</li> <li>4. Briefly vortex the tube and then do a quick spin (less than 5000xg) to concentrate the liquid at the bottom.</li> <li>5. Store the suspended plasmid at -20°C. The DNA is stable for at least one year from date of shipping when stored at -20°C.</li> </ol>
<b>Note:</b>	Plasmids are not sterile. For experiments where strict sterility is required, filtration with 0.22um filter is required.
<b>RefSeq:</b>	<u>NM_016422.2</u>
<b>RefSeq Size:</b>	4084 bp
<b>RefSeq ORF:</b>	693 bp
<b>Locus ID:</b>	50862
<b>UniProt ID:</b>	<u>Q8WVD5</u>
<b>Cytogenetics:</b>	11p15
<b>Domains:</b>	RING
<b>Protein Families:</b>	Druggable Genome, Transcription Factors
<b>MW:</b>	25.5 kDa
<b>Gene Summary:</b>	The protein encoded by this gene contains a RING finger, a motif known to be involved in protein-DNA and protein-protein interactions. Abundant expression of this gene was found in the testicular tissue of fertile men, but was not detected in azoospermic patients. Studies of the mouse counterpart suggest that this gene may function as a testis specific transcription factor during spermatogenesis. [provided by RefSeq, Jul 2008]

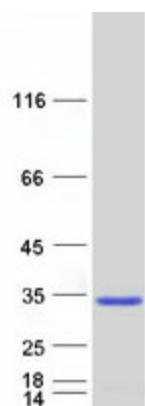
## Product images:



Circular map for RC201861



Western blot validation of overexpression lysate (Cat# [LY414010]) using anti-DDK antibody (Cat# [TA50011-100]). Left: Cell lysates from untransfected HEK293T cells; Right: Cell lysates from HEK293T cells transfected with RC201861 using transfection reagent MegaTran 2.0 (Cat# [TT210002]).



Coomassie blue staining of purified RNF141 protein (Cat# [TP301861]). The protein was produced from HEK293T cells transfected with RNF141 cDNA clone (Cat# RC201861) using MegaTran 2.0 (Cat# [TT210002]).