

## Product datasheet for **RC201854**

### Mitofilin (IMMT) (NM\_006839) Human Tagged ORF Clone

#### Product data:

Product Type:	Expression Plasmids
Product Name:	Mitofilin (IMMT) (NM_006839) Human Tagged ORF Clone
Tag:	Myc-DDK
Symbol:	Mitofilin
Synonyms:	HMP; Mic60; MICOS60; MINOS2; P87; P87/89; P89; PIG4; PIG52
Mammalian Cell Selection:	Neomycin
Vector:	pCMV6-Entry (PS100001)
E. coli Selection:	Kanamycin (25 ug/mL)



[View online »](#)



**Protein Sequence:** >RC201854 protein sequence  
Red=Cloning site Green=Tags(s)

```
MLRACQLSGVTAQAQSCLCGKFVLRPLRPCRRYSTSGSSGLTTGKIAGAGLLFVGGGIGGTILYAKWDSH
FRESVEKTIPIYSDKLFEMVLGPAAYNVPLPKKSIQSGPLKISSVSEVMKESKQPASQLQKQKGDTPASAT
APTEAAQIIISAAGDTLSVPAPAVQPEESLKTDPHEIGEGKPTPALSEEASSSSIRERPPEEVAARLAQQE
KQEQQVKIESLAKSLEDALRQTASVTLQAIAAQNAAVQAVNAHSNLIKAAAMDNSEIAGEKKSQWRTVEGA
LKERRKAVDEAADALLKAKEELEKMKSVIENAKKKEVAGAKPHITAAEGKLNMIVDLDNVVKKVQAAQS
EAKVVSQYHELVVQARDDFKRELDISITPEVLPGWKGMSVSDLADKLDSTDDLNSLIAHAHRRIDQLNRELA
EQKATEKHITLALAKQKLEEKRAFDSAVAKALEHHRSEIQAEQDRKIEEVRDAMENEMRTLRRQAAAHH
TDHLRDVLRVQEQLKSEFEQNLSEKLEQELQFRRLSQEQVDNFTLDINTAYARLRGIEQAVQSHAVAE
EEARKAHLWLVEALKYSMTSSAETPTIPLGSAVEAIKANCSDFEFTQALTAAPPESLTRGVYSEET
LRARFYAVQKLARRVAMIDETRNSLYQYFLSYLQSLLLFPPQQLKPPPELCPEDINTFKLLSYASYCIEH
GDLELAAKFVNQLKGESRRVAQDWLKEARMTLETKQIVEILTAYASAVGIGTTQVQPE
```

TRTRPLEQKLISEEDLAANDILDYKDDDDKV

**Chromatograms:** [https://cdn.origene.com/chromatograms/mk6209\\_g07.zip](https://cdn.origene.com/chromatograms/mk6209_g07.zip)

**Restriction Sites:** Sgfl-MluI

**Cloning Scheme:**

Cloning sites used for ORF Shuttling:



\* The last codon before the Stop codon of the ORF

**ACCN:** NM\_006839

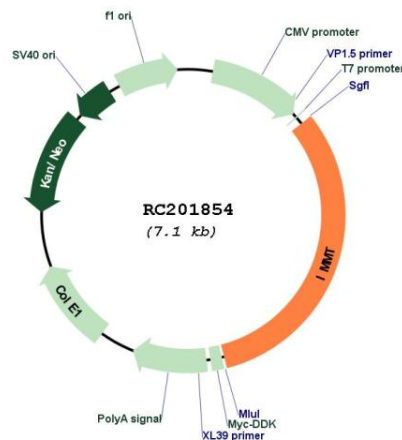
**ORF Size:** 2274 bp

**OTI Disclaimer:** The molecular sequence of this clone aligns with the gene accession number as a point of reference only. However, individual transcript sequences of the same gene can differ through naturally occurring variations (e.g. polymorphisms), each with its own valid existence. This clone is substantially in agreement with the reference, but a complete review of all prevailing variants is recommended prior to use. [More info](#)

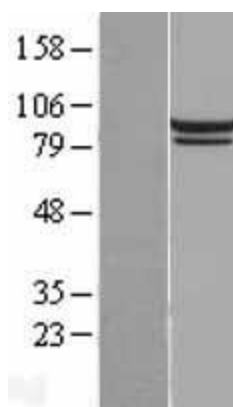
**OTI Annotation:** This clone was engineered to express the complete ORF with an expression tag. Expression varies depending on the nature of the gene.

<b>Components:</b>	The ORF clone is ion-exchange column purified and shipped in a 2D barcoded Matrix tube containing 10ug of transfection-ready, dried plasmid DNA (reconstitute with 100 ul of water).
<b>Reconstitution Method:</b>	<ol style="list-style-type: none"> <li>1. Centrifuge at 5,000xg for 5min.</li> <li>2. Carefully open the tube and add 100ul of sterile water to dissolve the DNA.</li> <li>3. Close the tube and incubate for 10 minutes at room temperature.</li> <li>4. Briefly vortex the tube and then do a quick spin (less than 5000xg) to concentrate the liquid at the bottom.</li> <li>5. Store the suspended plasmid at -20°C. The DNA is stable for at least one year from date of shipping when stored at -20°C.</li> </ol>
<b>RefSeq:</b>	<u><a href="#">NM_006839.3</a></u>
<b>RefSeq Size:</b>	3018 bp
<b>RefSeq ORF:</b>	2277 bp
<b>Locus ID:</b>	10989
<b>UniProt ID:</b>	<u><a href="#">Q16891</a></u>
<b>Cytogenetics:</b>	2
<b>MW:</b>	83.7 kDa
<b>Gene Summary:</b>	Component of the MICOS complex, a large protein complex of the mitochondrial inner membrane that plays crucial roles in the maintenance of crista junctions, inner membrane architecture, and formation of contact sites to the outer membrane. Plays an important role in the maintenance of the MICOS complex stability and the mitochondrial cristae morphology (PubMed:22114354, PubMed:25781180).[UniProtKB/Swiss-Prot Function]

### Product images:



Circular map for RC201854



Western blot validation of overexpression lysate (Cat# [LY416384]) using anti-DDK antibody (Cat# [TA50011-100]). Left: Cell lysates from untransfected HEK293T cells; Right: Cell lysates from HEK293T cells transfected with RC201854 using transfection reagent MegaTran 2.0 (Cat# [TT210002]).