

Product datasheet for **RC201842**

ENC1 (NM_003633) Human Tagged ORF Clone

Product data:

Product Type:	Expression Plasmids
Product Name:	ENC1 (NM_003633) Human Tagged ORF Clone
Tag:	Myc-DDK
Symbol:	ENC1
Synonyms:	CCL28; ENC-1; KLHL35; KLHL37; NRPB; PIG10; TP53I10
Mammalian Cell Selection:	Neomycin
Vector:	pCMV6-Entry (PS100001)
E. coli Selection:	Kanamycin (25 ug/mL)



[View online »](#)

ORF Nucleotide Sequence:

>RC201842 ORF sequence
 Red=Cloning site Blue=ORF Green=Tags(s)

TTTTGTAATACGACTCACTATAGGGCGGCCGGAATTCGTCGACTGGATCCGGTACCGAGGAGATCTGCC
 GCC**CGCATCGCC**

ATGTCAGTCAGTGTGCATGAGAACCGAAGTCCAGGGCCAGCAGCGGCTCCATTAACATCTATCTGTTTC
 ACAAGTCCTCCTACGCTGACAGCGTCTCACTCACCTGAATCTTTTACGCCAGCAGCGTCTTCACTGA
 CGTCCTTCTCCATGCCGAAATAGGACCTTCCCTTGCCACCGGGCAGTGTGGCTGCATGCAGTCGCTAC
 TTTGAGGCCATGTTCAAGTGGTGGCTGAAAGAGAGCCAGGACAGTGAAGTCAACTTTGACAAATCCATCC
 ACCCAGAAGTCTTGGAGCTGCTGCTGACTATGCGTACTCTCCCGGTCATCATCAATGAAGAAAATGC
 AGAATCGCTCCTGGAAGCTGGTACATGCTGGAGTTTCAAGACATCCGGGATGCATGTGCAGAGTTCCTG
 GAAAAGAAGCTGCATCCCACTGCCTGGGCATGCTGCTGTCTGATGCACACCAGTGCACCAAGC
 TGTACGAATATCTTGGAGAATGTCTCAGCAACTTCCAAACCATCAGGAAGAATGAAGATTTCTCCA
 GCTGCCCAAGGACATGGTAGTCAACTCTGTCCAGTGAAGAGCTGGAGACAGAGGATGAAAGGCTTGTG
 TACGAGTCTGCAATTAAGTGGATCAGCTATGACCTGAAGAAGCGCTATTGCTACCTCCAGAACTGTTGC
 AGACAGTAAGGCTGGCACTTCTGCCAGCCATCTATCTCATGGAGAATGTGGCCATGGAGGAACTCATCAC
 CAAGCAGAGAAAAGAGTAAGGAAATTGTGGAAGAGGCCATCAGGTGCAAACTGAAAATCCTGCAGAATGAC
 GGTGTGGTAACCAGCCTCTGTGCCCGACCTCGGAAAATGGCCATGCCCTCTTCTTCTGGGAGGACAGA
 CTTTATGTGTGACAAGTTGTATCTGGTAGACCAGAAGGCCAAAGAAATCATTCCCAAGGCTGACATTCC
 CAGCCCAAGAAAAGAGTTAGTGCATGTGCGATTGGCTGCAAAGTGTACATTACTGGGGGGCGGGGTCT
 GAAAATGGGTCTCAAAGATGTCTGGGTTTATGATACCCTGCACGAGGAGTGGTCCAAGGCTGCCCCCA
 TGCTGGTGGCCAGGTTTGGCCATGGCTGTCTGAACTGAAGCACTGCCTGTATGTGGTGGGGGGCACA
 GGCCGCAACTGGCTGCCTCCCGGCTCCCTCAGTCTCTCTAAAGCAGGTAGAACATTATGACCCACA
 ATCAACAATGGACCATGGTGGCCCACTCCGAGAAGGCGTTAGCAACGCCGAGTGTGAGTGCCTAAAC
 TTAAGTTATTTGCTTTCGGAGGTACCAGTGTGAGTGCATGACAAGCTCCCAAGTTTCAAGTGTACGATCA
 GTGTGAAAACAGGTGGACTGTACCGCCACCTGTCCCAAGCCTGGCGTTACACAGCAGCAGCTGTGCTG
 GGAACACAGATTTTTATTATGGGGGTGATACAGAATTCTCTGCCTGCTGCTTATAAATCAACAGT
 AGACTTACCAGTGGACCAAGGTGGGAGATGTGACAGCAAAGCGCATGAGCTGCCATGCTGTGGCCTCTGG
 AAACAACCTACGTGGTGGAGGATACTTTGGCATTACGCGATGCAAGACTTTGGACTGCTACGATCCA
 ACATTAGAGTGTGGAACAGCATCACCCTGTCCCGTACTCGCTGATTCTACTGCATTTGTCAGCACCT
 GGAACATCTGCCTTCT

ACGCGTACGCGGCCGCTCGAGCAGAAACTCATCTCAGAAGAGGATCTGGCAGCAAATGATATCCTGGATT
 ACAAGGATGACGACGATAAGGTTTAA

Protein Sequence:

>RC201842 protein sequence
 Red=Cloning site Green=Tags(s)

MSVSVHENRKSRASSGSINIYLFHKSSYADSVLTHLNLLRQQLFTDVLHAGNRTFPCHRAVLAACSR
 FEAMFSGGLKESQDSEVNFNSIHPEVLELLLDYAYSSRVIINEENAESLLEAGDMLEFQDIRDACAFL
 EKNLHPTNCLGMLLLSDAHQCTKLYELSWRMCLSNFQIRKNEFLQLPQDMVVQLLSSELETERL
 YESAINWISYDLKKRYCYLPELLQTVRLALLPAIYLMENVAMEELITKQRKSKEIVEEAIKCKLILQND
 GVVTSLCARPRKTGHAFLLGGQTFMCDKLYLVDQKAKEIIPKADIPSPRKEFSACAIKGYITGGRS
 ENGVSKDWWYDTHHEWSKAAPMLVARFGHGSSELKHCLYVVGHTAATGCLPASPSVSLKQVEHYDPT
 INKWTMVAPLREGVSNAAVVSAKLLKFAFGGTSVSHDKLPKVQCYDQCENRWTVPATCPQPWRYTAAAVL
 GNQIFIMGGDTEFSACSAYKFNSEYQWTKVGDVTAKRMSCHAVASGNKLYVVGYYFGIQRCKTLDYD
 TLDVWNSITTPYSLIPTAFVSTWKHLPS

TRTRPLEQKLISEEDLAANDILDYKDDDDKV

Chromatograms:

https://cdn.origene.com/chromatograms/mk6151_h03.zip

Restriction Sites: SgfI-MluI

Cloning Scheme:



ACCN: NM_003633

ORF Size: 1767 bp

OTI Disclaimer: The molecular sequence of this clone aligns with the gene accession number as a point of reference only. However, individual transcript sequences of the same gene can differ through naturally occurring variations (e.g. polymorphisms), each with its own valid existence. This clone is substantially in agreement with the reference, but a complete review of all prevailing variants is recommended prior to use. [More info](#)

OTI Annotation: This clone was engineered to express the complete ORF with an expression tag. Expression varies depending on the nature of the gene.

Components: The ORF clone is ion-exchange column purified and shipped in a 2D barcoded Matrix tube containing 10ug of transfection-ready, dried plasmid DNA (reconstitute with 100 ul of water).

- Reconstitution Method:**
1. Centrifuge at 5,000xg for 5min.
 2. Carefully open the tube and add 100ul of sterile water to dissolve the DNA.
 3. Close the tube and incubate for 10 minutes at room temperature.
 4. Briefly vortex the tube and then do a quick spin (less than 5000xg) to concentrate the liquid at the bottom.
 5. Store the suspended plasmid at -20°C. The DNA is stable for at least one year from date of shipping when stored at -20°C.

RefSeq: [NM_003633.3](#)

RefSeq Size: 5520 bp

RefSeq ORF: 1770 bp

Locus ID: 8507

UniProt ID: [O14682](#)

Cytogenetics: 5q13.3

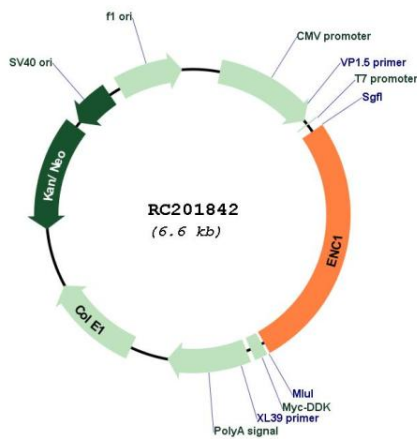
Domains: BTB, Kelch

Protein Families: Druggable Genome

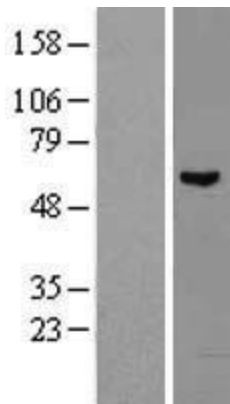
MW: 66.1 kDa

Gene Summary: This gene encodes a member of the kelch-related family of actin-binding proteins. The encoded protein plays a role in the oxidative stress response as a regulator of the transcription factor Nrf2, and expression of this gene may play a role in malignant transformation. Alternatively spliced transcript variants encoding multiple isoforms have been observed for this gene. [provided by RefSeq, Feb 2012]

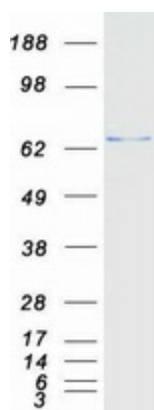
Product images:



Circular map for RC201842



Western blot validation of overexpression lysate (Cat# [LY401201]) using anti-DDK antibody (Cat# [TA50011-100]). Left: Cell lysates from untransfected HEK293T cells; Right: Cell lysates from HEK293T cells transfected with RC201842 using transfection reagent MegaTran 2.0 (Cat# [TT210002]).



Coomassie blue staining of purified ENC1 protein (Cat# [TP301842]). The protein was produced from HEK293T cells transfected with ENC1 cDNA clone (Cat# RC201842) using MegaTran 2.0 (Cat# [TT210002]).