

Product datasheet for **RC201823**

EFTUD2 (NM_004247) Human Tagged ORF Clone

Product data:

Product Type:	Expression Plasmids
Product Name:	EFTUD2 (NM_004247) Human Tagged ORF Clone
Tag:	Myc-DDK
Symbol:	EFTUD2
Synonyms:	MFDGA; MFDM; SNRNP116; Snrp116; Snu114; U5-116KD
Mammalian Cell Selection:	Neomycin
Vector:	pCMV6-Entry (PS100001)
E. coli Selection:	Kanamycin (25 ug/mL)



[View online »](#)

ORF Nucleotide Sequence:

>RC201823 ORF sequence
 Red=Cloning site Blue=ORF Green=Tags(s)

TTTTGTAATACGACTCACTATAGGGCGGCCGGAATTCGTCGACTGGATCCGGTACCGAGGAGATCTGCC
 GCC**CGCATCGCC**

ATGGATACCGACTTATATGATGAGTTTGGGAATTATTTGGACCAGAGCTTGATTCTGATGAAGATGATG
 ATGAATTGGGTAGAGAGACCAAAGATCTTGATGAGATGGATGATGATGACGACGACGATGACGTAGGAGA
 TCATGACGATGACCACCCTGGGATGGAGGTGGTCTGCATGAGGACAAGAAGTACTACCAAACAGCCGAG
 GAGGTGTATGGTCTGAGGTGGAGACCATAGTTCAAGAGGAAGACACTCAGCCTCTCACAGAACCATTAA
 TTAAGCCAGTGAAAACCAAGAAATTCACCTCTGATGGAGCAGACATTACCTGTTACGGTGTATGAGATGGA
 TTTCTTGGCGGATCTGATGGATAACTCAGAGCTCATCAGAAATGTGACCCCTTTGTGGACATCTCCACCAT
 GGCAAGACATGTTTTGTGGATTGTTAATTGAACAGACTCACCCGAAATCAGAAAGCGCTATGACCAAG
 ATCTGTGCTATACTGACATCCTCTTACAGAGCAAGAGAGAGGTGTAGGCATCAAAGCACTCCTGTGAC
 AGTGGTCTTGCCAGACACCAAAGGAAAACTTATCTCTTCAATATCATGGACACTCCAGGACATGTGAAT
 TTCTCTGATGAGGTCACAGCTGGCTTGGCATCTCAGATGGAGTGGTCTTTTCATTGATGCTGCTGAGG
 GGGTATGCTGAACACAGAGCGGCTGATCAAGCATGCGGTGCAGGAGAGGCTGGCAGTCACTGTGTGCAT
 CAACAAGATTGACCGGCTGATCCTGGAGCTGAAGCTGCCTCCAAGTATGCTTATTACAAGCTGCGCCAC
 ATTGTGGATGAGGTCAATGGATTAATAAGCATGTATTCCACTGATGAGAACCTGATCCTTTCCCACTCC
 TGGGTAACGTCTGCTTCTCCAGCTCCAGTACAGCATCTGCTTACGCTGGTCTCCTTTGCCAAGATCTA
 TGCCGACACCTTTGGTGACATTAATTACCAAGAATTTGCTAAAAGACTCTGGGGTGACATCTACTTCAAC
 CTAAGACGCGAAAGTTCAACAAAAAGGCCCACTAGCAGCTCCAGAGAAGTTTCGTGGAGTTTATCT
 TGGAGCCTTTTATAAGATCCTCGCCAGTTGTAGGTGACGTGGACACCAGCCTCCACGGACCTTAGA
 CGAGCTTGGCATCCACCTGACGAAGGAGGAGCTGAAGCTGAACATCCGCCCTTGCTCAGGCTGGTCTGC
 AAAAAGTTCTTTGGCGAGTTCACAGGCTTTGTGGACATGTGTGTGACGATATCCCTTCTCCAAAGTGG
 GCGCAAGCCCAAGATTGAGCACACCTACACCGGTGGTGTGGACTCCGACCTCGCGGAGGCTATGAGTGA
 CTGTGACCCTGATGGCCCTGATGTGCCACACTACTAAGATGTACAGCACAGATGATGGAGTCCAGTTT
 CACGCCTTTGGCCGGTGTGAGTGGCACCATTATGCTGGCAGCCTGTGAAGTACTGGGGGAGAACT
 ACACCCTGGAGGATGAGGAAGACTCCAGATATGCACCGTGGGCCGCTTTGGATCTCTGTGGCCAGGTA
 CCACATCGAGGTGAACCGTGTCTCTGCTGGCAACTGGGTTCTGATTGAAGGTGTTGATCAACCAATTGTG
 AAGACAGCAACCATAACCGAACCCGAGGCAATGAGGAGGCTCAGATTTCCGACCTTGAAGTTCAATA
 CCACATCTGTTATCAAGATTGCTGTGGAGCCAGTCAACCCTCAGAGCTGCCAAGATGCTTGATGGCCT
 GCGCAAGGTCAACAAGAGCTATCCATCCCTCACCAACCAAGGTGGAGGAGTCTGGCGAGCATGTGATCCTG
 GCACTGGGGAGCTCTACCTGGACTGTGTGATGCATGATTTGCGGAAGATGTACTCAGAGATAGACATCA
 AGGTGGCTGACCCAGTTGTACGTTTTGTGAGACGGTGGTGGAAACATCCTCCCTCAAGTCTTTGCTGA
 AACGCCTAATAAGAAGAACAAGATCACCATGATTGCTGAGCCTTTGAGAAGGGCCTGGCAGAGGACATA
 GAGAATGAGGTGGTCCAGATTACGTGGAACAGGAAGAAGCTGGGAGAGTTCTTCCAGACCAAGTACGATT
 GGGATCTGCTGGCTGCCGTTCCATCTGGGCTTTTGGCCCTGATGCGACTGGCCCAACATCTGGTGA
 TGATACTCTGCCCTCTGAGGTGGACAAGGCTCTTCTGGTTCAGTGAAGGACAGCATCGTTCAAGTTTC
 CAGTGGGGAACCAAGGAGGGCCCTCTGTGATGAATTGATTGGAATGTCAAGTTAAGATCCTGGATG
 CGGTGGTTGCCAGGAGCCCTGCACCGGGCGGGGGCCAGATCATCCCCACAGCCAGGAGATCGTCTA
 CTCTGCCTTCTCATGGCTACTCCTCGTCTGATGGAGCCTTACTACTTTGTAGAGGTCCAGGCCCTGCA
 GATTGCGTCTCTGCAGTTTATACCGTCTGGCCAGGCGCAGGGGGCACGTGACTCAGGATGCACCCATCC
 CAGGCTCCCTCTGTACACCATCAAAGCTTTTATCCCGGCATCGACTCTTTGGCTTTGAGACTGATCT
 CCGGACTCACACCCAGGACAAGCCTTTTCTGTCTGTCTTCCACCACTGGCAGATTGTGCTGGTGTGAT
 CCCCTGGACAAGAGCATTGTATCCGCCCTTGGAGCCACAGCCAGCTCCTCACCTGGCCCGGAATTCA
 TGATCAAAACCCCGCTAGGAAGGGCTCAGTGAAGATGTGAGCATCAGCAAATCTTCGATGATCCTAT
 GTTGCTGGAACCTGCCAAACAGGATGTTGTGCTCAATTACCCCATG

ACGCGTACGCGGCCGCTCGAGCAGAACTCATCTCAGAAGAGGATCTGGCAGCAAATGATATCCTGGATT
 ACAAGGATGACGACGATAAGGTTTAA

Protein Sequence: >RC201823 protein sequence
Red=Cloning site Green=Tags(s)

```

MDTDLYDFEGNYIGPELDSDEDDDELGRETkdLDemDDDDDDDDVGDHDDHPGMEVVLHEDKKYPTAE
EYVGPEVETIVQEEDTQPLTEPIIKPVKTKKFTLMEQTLPTVYEMDFLADLMDNSELIRNVTLCGHLHH
GKTCFVdCLIEQTHPEIRKRYDQDLcyTDILFTEQERGVIKSTPVTVLPDtkGKSYLFNIMDTPGHVN
FSDEVTAGLRISDGVVLFIDAAEGVMLNTERLIKHAVQERLAVTVCINKIDRLILELKLPTDAYYKLRH
IVDEVNGLISMYSTDENLILSPLLGNVCFSSSQYSICFTLVSFakiYADTFGDINyQEFaKRLWGDYIFN
PKTRKfTKKAPTSSQRSFVEFILLEPLyKILAQVVGDVDTSLPRTLDELGIHLtKEELKLNIRPLLRVC
KKFFGEFTGFVDMCVQHIPSPKVGAKPKIEHTYtGGVSDLGEAMSDCDPDGPLMCHtTKMYSTDDGvQF
HAFGRVLSGTIHAGQPVKVLGENYtLEDEEDSQICTVGRlWISVARYHIEVNRVPAGNWVLIeGVDQPIV
KTATITEPRGNEEAQIFRPLKFNTTSVIKIAVEPVNPSELpkMLDGLRkVNKSYPsLTTKVEESGEHVIL
GTGELyLDCVMHDLRkMYSEIDIKVADPVVtFCETVVETSSlKCFaETPNKKNKI TMIAEPLekGLAEDI
ENEVVQITWNRKKLGEFFQTKYDWDLLAARSIWAFGPDATGPNILVDDTLpSEVDKALLGSVKDSIVQGF
QWGTREGPLCDELIRNVFKILDavVAQEPLHRGGQIIPTARRVvYSAFLMATPRLMEpYFVEVQAPA
DCVSAVYTVLARRRHVTQDAPIPGSPLYTIKAFIPAIDSFGFETDLRTHtQGQAFSLSVFHHWQIVPGD
PLDKSIVIRPLEPQPAPHLAREFMiKTRRRKGLSEdVSIKFFDDPMLLELAKQDVVLYNPM
    
```

TRTRPLEQKLISEEDLAANDILDYKDDDDKV

Chromatograms: https://cdn.origene.com/chromatograms/mk6209_e11.zip

Restriction Sites: SgfI-MluI

Cloning Scheme:

Cloning sites used for ORF Shuttling:



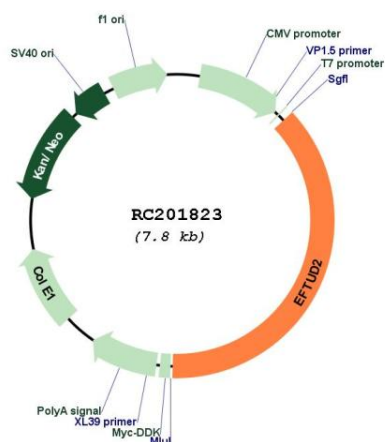
* The last codon before the Stop codon of the ORF

ACCN: NM_004247

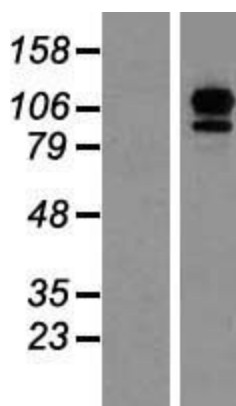
ORF Size: 2916 bp

OTI Disclaimer:	The molecular sequence of this clone aligns with the gene accession number as a point of reference only. However, individual transcript sequences of the same gene can differ through naturally occurring variations (e.g. polymorphisms), each with its own valid existence. This clone is substantially in agreement with the reference, but a complete review of all prevailing variants is recommended prior to use. More info
OTI Annotation:	This clone was engineered to express the complete ORF with an expression tag. Expression varies depending on the nature of the gene.
Components:	The ORF clone is ion-exchange column purified and shipped in a 2D barcoded Matrix tube containing 10ug of transfection-ready, dried plasmid DNA (reconstitute with 100 ul of water).
Reconstitution Method:	<ol style="list-style-type: none">1. Centrifuge at 5,000xg for 5min.2. Carefully open the tube and add 100ul of sterile water to dissolve the DNA.3. Close the tube and incubate for 10 minutes at room temperature.4. Briefly vortex the tube and then do a quick spin (less than 5000xg) to concentrate the liquid at the bottom.5. Store the suspended plasmid at -20°C. The DNA is stable for at least one year from date of shipping when stored at -20°C.
RefSeq:	NM_004247.2 , NP_004238.2
RefSeq Size:	4167 bp
RefSeq ORF:	2919 bp
Locus ID:	9343
UniProt ID:	Q15029
Cytogenetics:	17q21.31
Domains:	EFG_C, GTP_EFTU, GTP_EFTU_D2, EFG_IV
Protein Pathways:	Spliceosome
MW:	109.5 kDa
Gene Summary:	This gene encodes a GTPase which is a component of the spliceosome complex which processes precursor mRNAs to produce mature mRNAs. Mutations in this gene are associated with mandibulofacial dysostosis with microcephaly. Multiple transcript variants encoding different isoforms have been found for this gene. [provided by RefSeq, Apr 2012]

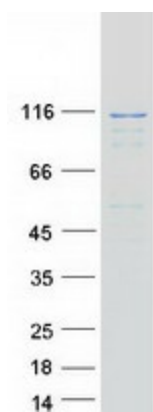
Product images:



Circular map for RC201823



Western blot validation of overexpression lysate (Cat# [LY418117]) using anti-DDK antibody (Cat# [TA50011-100]). Left: Cell lysates from untransfected HEK293T cells; Right: Cell lysates from HEK293T cells transfected with RC201823 using transfection reagent MegaTran 2.0 (Cat# [TT210002]).



Coomassie blue staining of purified EFTUD2 protein (Cat# [TP301823]). The protein was produced from HEK293T cells transfected with EFTUD2 cDNA clone (Cat# RC201823) using MegaTran 2.0 (Cat# [TT210002]).