

Product datasheet for RC201822

DUSP11 (NM_003584) Human Tagged ORF Clone

Product data:

Product Type:	Expression Plasmids
Product Name:	DUSP11 (NM_003584) Human Tagged ORF Clone
Tag:	Myc-DDK
Symbol:	DUSP11
Synonyms:	PIR1
Mammalian Cell Selection:	Neomycin
Vector:	pCMV6-Entry (PS100001)
E. coli Selection:	Kanamycin (25 ug/mL)
ORF Nucleotide Sequence:	>RC201822 ORF sequence Red=Cloning site Blue=ORF Green=Tags(s)

TTTTGTAATACGACTCACTATAGGGCGGCCGGAATTCGTCGACTGGATCCGGTACCGAGGAGATCTGCC
GCC**CGCATCGCC**

ATGAGCCAGTGGCATCATCCCCGAGTGGCTGGGGCCGGAGACGCGACTTTTCAGGACGCTCCTCAGCCA
AGAAGAAGGGCGGAAACACATCCCCGAAAGGTGGAAAGACTATCTCCAGTTGGACAGCGGATGCCTGG
GACTCGTTTCATTGCTTTCAAAGTTCCTTTGCAAAGAGTTTTGAAAAGAACTTGCTCCAGAAGAATGC
TTTTCCCTTTGGATCTTTTAAACAAAATCCGAGAACAAAATGAAGAAGTGGACTGATTATTGATTTAA
CATATACTCAACGCTATTATAAACAGAGGATTTGCCAGAACTGTTCTTACTTAAAAATTTTACAGT
TGGACATCAAGTGCCTGATGATGAGACTATTTTTAAATTCAAACACGCTGTTAATGGGTTTTTGAAGAA
AATAAAGATAATGATAAACTTATTGGTGTCCACTGTACCCATGGTTTAAACAGGACTGGCTACCTCATT
GCATATATTTGATTGATGTAGAAGGCGTGAGGCCAGATGATGCAATTGAATTATTCAATAGGTGCCGGGG
ACATTGCTTAGAAAGACAAAACACTACATTGAAGACCTTCAGAAATGGTCCTATCAGAAAGAATTGGAATTCC
AGTGTACCCAGGTCAAGTATTTGAAGACTCAGCACATCTCATGCAACCCAGTCCACAATAAGCCTGTTA
ACAAGGACCTAGGTATAATCTACATCAGATCCAGGGTCACTCAGCTCCTCGACATTTCCACACCCAGAC
CCAAAGTTTGAACAATCAGTCAGAAAATTTTCAGAGAATCCACATGTTTACCAGAGACACCATCTCCCT
CCTCCTGGTCCCCTGGAGAGGACTATTCACACAGGAGTATTCTTGAATGTGAAGCCCAATGCCAGTC
GGGCAGCCAGGATAGAAGAAGGTGGTATCCTTATAATTACTCCAGACTCTCCTATCCAGCCTGTTGGGA
ATGGACCCAG

ACGCGTACGCGGCCGCTCGAGCAGAACTCATCTCAGAAGAGGATCTGGCAGCAAATGATATCCTGGATT
ACAAGGATGACGACGATAAGGTTTAA



[View online »](#)

Protein Sequence: >RC201822 protein sequence
 Red=Cloning site Green=Tags(s)

MSQWHHPRSGWGRRRDFSGRSSAKKKGGNHIPERWKDYLPVQQRMPGTRFIAFKVPLQKSFEKLAPEEC
 FSPLDLFNKIREQNEELGLIIDLTYTQRYYPEDLPETVPYLKIFTVGHQVPDDETIKFKHAVNGFLKE
 NKDNDKLIQVHCTHGLNRTGYLICIYLDIVGVRPDDAIELFNRCRGHCLERQNYIEDLQNGPIRKNWNS
 SVPRSSDFEDSAHLMQPVHNKPKVKGPRYNLHQIQGHSAPRHFHTQTQSLQQSVRKFSENPVYQRHHLPL
 PPGPPGEDYSHRRYSWNVKNASRAAQDRRRRWYPYNYSRLSYPACWEWTQ

TRTRPLEQKLISEEDLAANDILDYKDDDDKV

Chromatograms: https://cdn.origene.com/chromatograms/mk6144_g04.zip

Restriction Sites: SgfI-MluI

Cloning Scheme:

Cloning sites used for ORF Shuttling:



* The last codon before the Stop codon of the ORF

ACCN: NM_003584

ORF Size: 990 bp

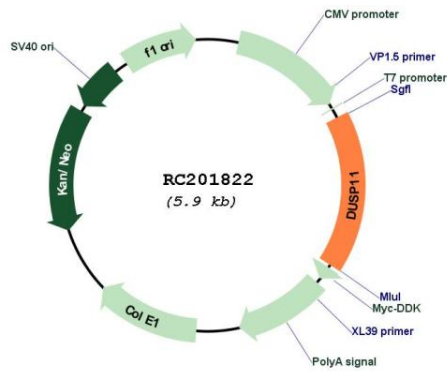
OTI Disclaimer: The molecular sequence of this clone aligns with the gene accession number as a point of reference only. However, individual transcript sequences of the same gene can differ through naturally occurring variations (e.g. polymorphisms), each with its own valid existence. This clone is substantially in agreement with the reference, but a complete review of all prevailing variants is recommended prior to use. [More info](#)

OTI Annotation: This clone was engineered to express the complete ORF with an expression tag. Expression varies depending on the nature of the gene.

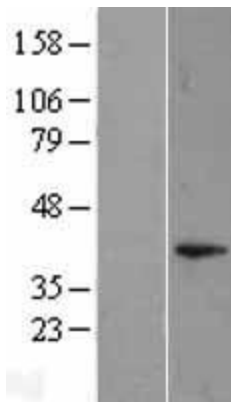
Components: The ORF clone is ion-exchange column purified and shipped in a 2D barcoded Matrix tube containing 10ug of transfection-ready, dried plasmid DNA (reconstitute with 100 ul of water).

Reconstitution Method:	<ol style="list-style-type: none">1. Centrifuge at 5,000xg for 5min.2. Carefully open the tube and add 100ul of sterile water to dissolve the DNA.3. Close the tube and incubate for 10 minutes at room temperature.4. Briefly vortex the tube and then do a quick spin (less than 5000xg) to concentrate the liquid at the bottom.5. Store the suspended plasmid at -20°C. The DNA is stable for at least one year from date of shipping when stored at -20°C.
RefSeq:	NM_003584.1 , NP_003575.1
RefSeq Size:	1639 bp
RefSeq ORF:	1134 bp
Locus ID:	8446
UniProt ID:	O75319
Cytogenetics:	2p13.1
Domains:	DSPc
Protein Families:	Druggable Genome, Phosphatase
MW:	38.9 kDa
Gene Summary:	<p>The protein encoded by this gene is a member of the dual specificity protein phosphatase subfamily. These phosphatases inactivate their target kinases by dephosphorylating both the phosphoserine/threonine and phosphotyrosine residues. They negatively regulate members of the mitogen-activated protein (MAP) kinase superfamily (MAPK/ERK, SAPK/JNK, p38), which is associated with cellular proliferation and differentiation. Different members of the family of dual specificity phosphatases show distinct substrate specificities for various MAP kinases, different tissue distribution and subcellular localization, and different modes of inducibility of their expression by extracellular stimuli. This gene product is localized to the nucleus and binds directly to RNA and splicing factors, and thus it is suggested to participate in nuclear mRNA metabolism. [provided by RefSeq, Sep 2008]</p>

Product images:



Circular map for RC201822



Western blot validation of overexpression lysate (Cat# [LY401192]) using anti-DDK antibody (Cat# [TA50011-100]). Left: Cell lysates from untransfected HEK293T cells; Right: Cell lysates from HEK293T cells transfected with RC201822 using transfection reagent MegaTran 2.0 (Cat# [TT210002]).