

Product datasheet for **RC201803**

PGP9.5 (UCHL1) (NM_004181) Human Tagged ORF Clone

Product data:

Product Type:	Expression Plasmids
Product Name:	PGP9.5 (UCHL1) (NM_004181) Human Tagged ORF Clone
Tag:	Myc-DDK
Symbol:	PGP9.5
Synonyms:	HEL-117; HEL-S-53; NDGOA; PARK5; PGP 9.5; PGP9.5; PGP95; SPG79; Uch-L1
Mammalian Cell Selection:	Neomycin
Vector:	pCMV6-Entry (PS100001)
E. coli Selection:	Kanamycin (25 ug/mL)
ORF Nucleotide Sequence:	>RC201803 ORF sequence Red=Cloning site Blue=ORF Green=Tags(s)

TTTGTAAATACGACTCACTATAGGGCGGCCGGAATTCGTCGACTGGATCCGGTACCGAGGAGATCTGCC
 GCC**CGATCGCC**

ATGCAGCTCAAGCCGATGGAGATCAACCCCGAGATGCTGAACAAAGTGTGTCCCGCTGGGGTGCCTG
 GCCAGTGGCGCTTCGTGGACGTGCTGGGCTGGAAGAGGAGTCTCTGGGCTCGGTGCCAGCGCCTGCCTG
 CGCGCTGCTGCTGCTGTTTCCCCTCACGGCCAGCATGAGAACTTCAGGAAAAAGCAGATTGAAGAGCTG
 AAGGGACAAGAAGTTAGTCCTAAAGTGTACTTCATGAAGCAGACCATTGGGAATTCCTGTGGCACAATCG
 GACTTATTCACGCAGTGGCCAATAATCAAGACAACTGGGATTTGAGGATGGATCAGTTCTGAAACAGTT
 TCTTTCTGAAACAGAGAAAATGTCCCCTGAAGACAGAGCAAAATGCTTTGAAAAGAATGAGGCCATACAG
 GCAGCCCATGATGCCGTGGCACAGGAAGCCAATGTCCGGTAGATGACAAGGTGAATTTCCATTTTATTC
 TGTTTAAACAGTGGATGGCCACCTCTATGAACCTTGATGGACGAATGCCTTTCCGGTGAACCATGGCGC
 CAGTTCAGAGGACACCCTGCTGAAGGACGCTGCCAAGGTCTGCAGAGAATTCACCGAGCGTGAGCAAGGA
 GAAGTCCGCTTCTGCGGTGGCTCTCTGCAAGGCAGCC

ACGCGTACGCGGCCGCTCGAGCAGAACTCATCTCAGAAGAGGATCTGGCAGCAATGATATCCTGGATT
 ACAAGGATGACGACGATAAGGTTTAA


[View online »](#)

Protein Sequence: >RC201803 protein sequence
 Red=Cloning site Green=Tags(s)

MLQKPMEINPEMLNKLVSRLGVAGQWRFVDVLGLEEESLGSPAPACALLLPLTAQHENFRKKQIEEL
 KGQEVSPKVVFMKQTIGNSCGTIGLIHAVANNQDKLGFEDGSVLKQFLSETEKMSPEDRAKCFEKNEAIQ
 AAHDAVAQEGQCRVDDKVNHFHILFNNVDGHL YELDGRMPFPVNHGASSEDLLKDAAKVCREFTEREQG
 EVRFSVALCKAA

TRTRPLEQKLISEEDLAANDILDYKDDDDKV

Chromatograms: https://cdn.origene.com/chromatograms/mk6084_a03.zip

Restriction Sites: SgfI-MluI

Cloning Scheme:



ACCN: NM_004181

ORF Size: 669 bp

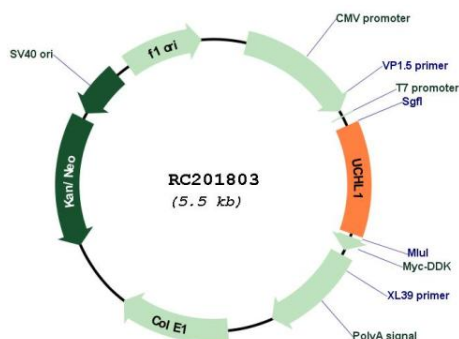
OTI Disclaimer: Due to the inherent nature of this plasmid, standard methods to replicate additional amounts of DNA in E. coli are highly likely to result in mutations and/or rearrangements. Therefore, OriGene does not guarantee the capability to replicate this plasmid DNA. Additional amounts of DNA can be purchased from OriGene with batch-specific, full-sequence verification at a reduced cost. Please contact our customer care team at custsupport@origene.com or by calling 301.340.3188 option 3 for pricing and delivery.

The molecular sequence of this clone aligns with the gene accession number as a point of reference only. However, individual transcript sequences of the same gene can differ through naturally occurring variations (e.g. polymorphisms), each with its own valid existence. This clone is substantially in agreement with the reference, but a complete review of all prevailing variants is recommended prior to use. [More info](#)

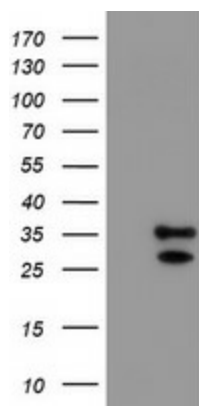
OTI Annotation: This clone was engineered to express the complete ORF with an expression tag. Expression varies depending on the nature of the gene.

Components:	The ORF clone is ion-exchange column purified and shipped in a 2D barcoded Matrix tube containing 10ug of transfection-ready, dried plasmid DNA (reconstitute with 100 ul of water).
Reconstitution Method:	<ol style="list-style-type: none"> 1. Centrifuge at 5,000xg for 5min. 2. Carefully open the tube and add 100ul of sterile water to dissolve the DNA. 3. Close the tube and incubate for 10 minutes at room temperature. 4. Briefly vortex the tube and then do a quick spin (less than 5000xg) to concentrate the liquid at the bottom. 5. Store the suspended plasmid at -20°C. The DNA is stable for at least one year from date of shipping when stored at -20°C.
Note:	Plasmids are not sterile. For experiments where strict sterility is required, filtration with 0.22um filter is required.
RefSeq:	NM_004181.5
RefSeq Size:	1141 bp
RefSeq ORF:	672 bp
Locus ID:	7345
UniProt ID:	P09936
Cytogenetics:	4p13
Domains:	Peptidase_C12
Protein Families:	Druggable Genome, Protease
Protein Pathways:	Parkinson's disease
MW:	24.8 kDa
Gene Summary:	<p>The protein encoded by this gene belongs to the peptidase C12 family. This enzyme is a thiol protease that hydrolyzes a peptide bond at the C-terminal glycine of ubiquitin. This gene is specifically expressed in the neurons and in cells of the diffuse neuroendocrine system. Mutations in this gene may be associated with Parkinson disease.[provided by RefSeq, Sep 2009]</p>

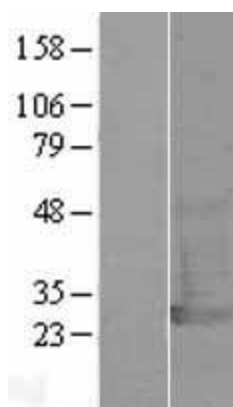
Product images:



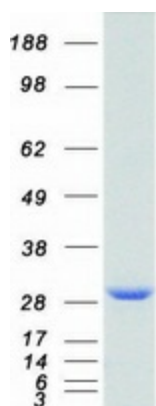
Circular map for RC201803



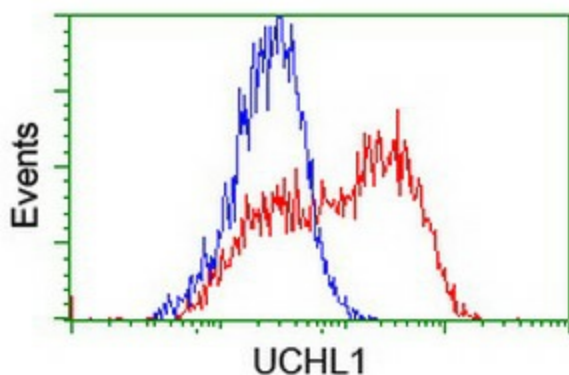
HEK293T cells were transfected with the pCMV6-ENTRY control (Cat# [PS100001], Left lane) or pCMV6-ENTRY UCHL1 (Cat# RC201803, Right lane) cDNA for 48 hrs and lysed. Equivalent amounts of cell lysates (5 ug per lane) were separated by SDS-PAGE and immunoblotted with anti-UCHL1 (Cat# [TA504289]). Positive lysates [LY401345] (100ug) and [LC401345] (20ug) can be purchased separately from OriGene.



Western blot validation of overexpression lysate (Cat# [LY401345]) using anti-DDK antibody (Cat# [TA50011-100]). Left: Cell lysates from untransfected HEK293T cells; Right: Cell lysates from HEK293T cells transfected with RC201803 using transfection reagent MegaTran 2.0 (Cat# [TT210002]).



Coomassie blue staining of purified UCHL1 protein (Cat# [TP301803]). The protein was produced from HEK293T cells transfected with UCHL1 cDNA clone (Cat# RC201803) using MegaTran 2.0 (Cat# [TT210002]).



HEK293T cells transfected with either RC201803 overexpress plasmid (Red) or empty vector control plasmid (Blue) were immunostained by anti-UCHL1 antibody ([TA504289]), and then analyzed by flow cytometry.