

## Product datasheet for **RC201791**

### TWF2 (NM\_007284) Human Tagged ORF Clone

#### Product data:

Product Type:	Expression Plasmids
Product Name:	TWF2 (NM_007284) Human Tagged ORF Clone
Tag:	Myc-DDK
Symbol:	TWF2
Synonyms:	A6r; A6RP; MSTP011; PTK9L
Mammalian Cell Selection:	Neomycin
Vector:	pCMV6-Entry (PS100001)
E. coli Selection:	Kanamycin (25 ug/mL)
ORF Nucleotide Sequence:	>RC201791 ORF sequence Red=Cloning site Blue=ORF Green=Tags(s)

TTTTGTAATACGACTCACTATAGGGCGGCCGGAATTCGTCGACTGGATCCGGTACCGAGGAGATCTGCC  
GCC**CGATCGCC**

ATGGCGCACAAACGGGCATCCACGCCACGAAGAGCTGAAGGAATTCCTTGCCAAGGCACGGGCTGGCT  
CTGTGCGGCTCATCAAGTTGTGATTGAGGACGAGCAGCTCGTGTGGTGCCTCGCAGGAGCCAGTAGG  
CCGCTGGGATCAGGACTATGACAGGGCCGTGCTGCCACTGCTGGACGCCAGCAGCCCTGCTACCTGCTC  
TACCGCCTCGACTCACAGAATGCTCAGGGCTTCGAATGGCTCTTCTCGCCTGGTCGCTGATAACTCCC  
CCGTGCGGCTGAAGATGCTGTACGCGGCCACGCGGCCACAGTAAAAAGGAGTTTGGAGGTGGCCACAT  
CAAGGATGAGCTCTTCGGGACTGTGAAGGATGACCTCTCTTTGCTGGGTACCAGAAACACCTGTGCTCC  
TGTGCGGCACCTGCCCGCTGACCTCGGCTGAGAGAGAGCTCCAGCAGATCCGCATTAACGAGGTGAAGA  
CAGAGATCAGTGTGAAAGCAAGCACCAGACCCTGCAGGGCCTCGCCTTCCCCCTGCAGCCTGAGGCCCA  
GCGGGCACTCCAGCAGCTCAAGCAGAAGATGGTCAACTACATCCAGATGAAGCTGGACCTAGAGCGGGAA  
ACCATTGAGCTGGTGCACACAGAGCCCACGGATGTGGCCAGCTGCCCTCCCGGGTGCCTCCGAGATGCTG  
CCCCTACCACTTCTTCTCTACAAGCACCCATGAGGGCGACCCCTTGAGTCTGTAGTGTTCATCTA  
CTCCATGCCGGGTACAAGTGCAGCATCAAGGAGCGAATGCTCTACTCCAGCTGCAAGAGCCGCTCCTC  
GACTCCGTGGAGCAGGACTTCCATCTGGAGATCGCCAAGAAAATTGAGATTGGCGATGGGGCAGAGCTGA  
CGGCAGAGTTCCTCTACGACGAGGTGCACCCCAAGCAACACGCCTTCAAGCAGGCCTTCGCCAAGCCCAA  
GGGCCAGGGGCAAGCGGGCCATAAGCGCCTCATCCGCGGCCCGGGTAAAAATGGGGATGACAGC

**ACGCGT**ACGCGGCCGCTCGAGCAGAACTCATCTCAGAAGAGGATCTGGCAGCAAATGATATCCTGGATT  
ACAAGGATGACGACGATAAGGTTTAA



[View online »](#)

**Protein Sequence:** >RC201791 protein sequence  
Red=Cloning site Green=Tags(s)

MAHQTGIIHATEELKEFFAKARAGSVRLIKVVIIEDEQLVLGASQEPVGRWDQDYDRAVLP LLDAQQPCYLL  
 YRLDSQNAQGFEWLFLAWSPDNVRLKMLYAATRATVKKEFGGGHIKDELFGTVKDDL SFAGYQKHLSS  
 CAAPAPL TSAERELQQIRINEVKTEISVESKHQTLQGLAFPLQPEAQRALQQLKQKMNVIQMKL DLERE  
 TIELVHTEPTDVAQLPSRVPRDAARYHFFLYKHTHEGDPLESVVF IYSMPGYKCSIKERMLYSSCKS RLL  
 DSVEQDFHLEIAKKIEIGDGAELTAEFLYDEVHPKQHAFKQAF AKPKGGGKRGHKRLIRGPGENG DDS

TRTRPLEQKLISEEDLANDILDYKDDDDKV

**Chromatograms:** [https://cdn.origene.com/chromatograms/mk6084\\_g04.zip](https://cdn.origene.com/chromatograms/mk6084_g04.zip)

**Restriction Sites:** SgfI-MluI

**Cloning Scheme:**



**ACCN:** NM\_007284

**ORF Size:** 1047 bp

**OTI Disclaimer:** The molecular sequence of this clone aligns with the gene accession number as a point of reference only. However, individual transcript sequences of the same gene can differ through naturally occurring variations (e.g. polymorphisms), each with its own valid existence. This clone is substantially in agreement with the reference, but a complete review of all prevailing variants is recommended prior to use. [More info](#)

**OTI Annotation:** This clone was engineered to express the complete ORF with an expression tag. Expression varies depending on the nature of the gene.

**Components:** The ORF clone is ion-exchange column purified and shipped in a 2D barcoded Matrix tube containing 10ug of transfection-ready, dried plasmid DNA (reconstitute with 100 ul of water).

**Reconstitution Method:**

1. Centrifuge at 5,000xg for 5min.
2. Carefully open the tube and add 100ul of sterile water to dissolve the DNA.
3. Close the tube and incubate for 10 minutes at room temperature.
4. Briefly vortex the tube and then do a quick spin (less than 5000xg) to concentrate the liquid at the bottom.
5. Store the suspended plasmid at -20°C. The DNA is stable for at least one year from date of shipping when stored at -20°C.

**RefSeq:** [NM\\_007284.4](#)

**RefSeq Size:** 1659 bp

**RefSeq ORF:** 1050 bp

**Locus ID:** 11344

**UniProt ID:** [Q6IBS0](#)

**Cytogenetics:** 3p21.2

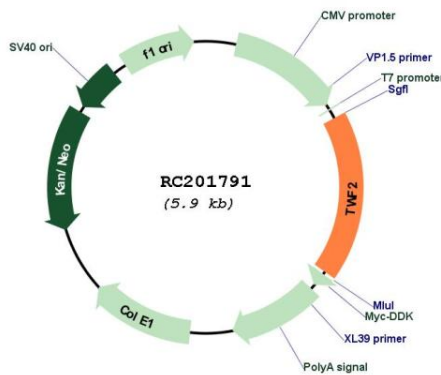
**Domains:** ADF

**Protein Families:** Druggable Genome

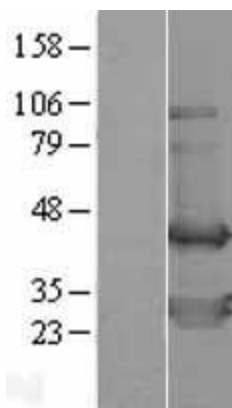
**MW:** 39.5 kDa

**Gene Summary:** The protein encoded by this gene was identified by its interaction with the catalytic domain of protein kinase C-zeta. The encoded protein contains an actin-binding site and an ATP-binding site. It is most closely related to twinfilin (PTK9), a conserved actin monomer-binding protein. [provided by RefSeq, Jul 2008]

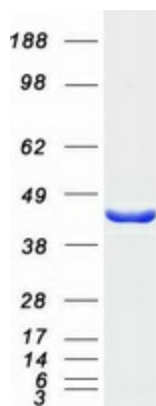
**Product images:**



Circular map for RC201791



Western blot validation of overexpression lysate (Cat# [LY402125]) using anti-DDK antibody (Cat# [TA50011-100]). Left: Cell lysates from untransfected HEK293T cells; Right: Cell lysates from HEK293T cells transfected with RC201791 using transfection reagent MegaTran 2.0 (Cat# [TT210002]).



Coomassie blue staining of purified TWF2 protein (Cat# [TP301791]). The protein was produced from HEK293T cells transfected with TWF2 cDNA clone (Cat# RC201791) using MegaTran 2.0 (Cat# [TT210002]).