

Product datasheet for **RC201787**

DPAGT1 (NM_001382) Human Tagged ORF Clone

Product data:

Product Type:	Expression Plasmids
Product Name:	DPAGT1 (NM_001382) Human Tagged ORF Clone
Tag:	Myc-DDK
Symbol:	DPAGT1
Synonyms:	ALG7; CDG-Ij; CDG1J; CMS13; CMSTA2; D11S366; DGPT; DPAGT; DPAGT2; G1PT; GPT; UAGT; UGAT
Mammalian Cell Selection:	Neomycin
Vector:	pCMV6-Entry (PS100001)
E. coli Selection:	Kanamycin (25 ug/mL)



[View online »](#)

ORF Nucleotide Sequence:

>RC201787 ORF sequence
 Red=Cloning site Blue=ORF Green=Tags(s)

TTTTGTAATACGACTCACTATAGGGCGGCCGGAATTCGTCGACTGGATCCGGTACCGAGGAGATCTGCC
 GCCCGCATCGCC

ATGTGGGCTTCTCGGAATTGCCATGCCGCTGCTGATCAATTTGATCGTCTCGCTGCTGGGATTTGTGG
 CCACAGTCACCTCATCCCGCCTTCCGGGCCACTTCATTGCTGCGCGCCTCTGTGGTCAGGACCTCAA
 CAAAACGACCGACAGCAGATCCAGAATCCAGGGAGTGATCAGCGGTGCTGTTTTCTTATCATCCTC
 TTCTGCTTCATCCCTTTCCCTTCTGAACTGCTTTGTGAAGGAGCAGTGAAGGCATCCCCACCATG
 AATTTGTGGCCCTGATAGGTGCCCTCCTTGCCATCTGCTGCATGATCTTCTGGGCTTTGCGGATGATG
 ACTGAATCTGCGCTGGCGCCATAAGCTGCTGCTACCTACAGCTGCCTCACTACCTCTCCTCATGGTCTAT
 TTCACCACTTTGGCAACAGACCATTGTGGTGCCAAGCCCTCCGCCGATACTTGGCCTGCATCTGG
 ACTTGGGAATCCTGTACTATGTCTACATGGGGCTGCTGGCAGTGTCTGTACCAATGCCATCAATATCCT
 AGCAGGAATTAACGGCCTAGAGGCTGGCCAGTCACTAGTCATTTCTGCTTCCATCATTGTCTTCAACCTG
 GTAGAGTTGGAAGGTGATTGTCGGGATGATCATGTCTTTCCCTCTACTTCATGATACCCTTTTTTTTCA
 CCACTTTGGGATTGCTCTACCACAACTGGTACCCATCACGGGTGTTTGTGGGAGATACCTTCTGTTACTT
 TGCTGGCATGACCTTTGCCGTGGTGGGCATCTTGGGACACTTCAGCAAGACCATGCTACTATTCTTCATG
 CCCCAGGTGTTCAACTTCTCTACTCACTGCCTCAGCTCCTGCATATCATCCCCTGCCCTCGCCACCGCA
 TACCCAGACTCAATATCAAGACAGGCAAACTGGAGATGAGCTATTCCAAGTTCAAGACCAAGAGCCTCTC
 TTTCTTGGGCACCTTTATTTAAAGGTGGCAGAGAGCCTCCAGCTGGTACAGTACACCAGAGTGAGACT
 GAAGATGGTGAATCACTGAATGTAACAACATGACCCTCATCACTTGTACTTAAAGTCCTTGGGCCCA
 TACATGAGAGAAACCTCACATTGCTCCTGCTGCTGCAGATCCTGGCAGTGCCATCACCTTCTCCAT
 TCGATATCAGCTCGTTGACTCTTCTATGATGTC

ACGCGTACGCGGCCGCTCGAGCAGAACTCATCTCAGAAGAGGATCTGGCAGCAATGATATCCTGGATT
 ACAAGGATGACGACGATAAGGTTTAA

Protein Sequence:

>RC201787 protein sequence
 Red=Cloning site Green=Tags(s)

MWAFSELPMPLLINLIVSLLGFVATVTLIPAFRGHFIAARLCGQDLNKTSRQQIPESQGVISGAVFLIIL
 FCFIPFPFLNCFVKEQCKAFPHHEFVALIGALLAICCMIFLGFADDVNLNRWRHKLLPTAASLPLLMVY
 FTNFGNTTIVVPKPFPRPILGLHLDLGLYYVYMGLLAVFCTNAINILAGINGLEAGQSLVISASIIVFNL
 VELEGDCRDDHVFSLYFMIPFFFTLGLLYHNWYPSRVFVGDFTCYFAGMTFAVVGILGHFSKTMLLFFM
 PQVFNFLYSLPQLLHIIPCPRHRIPRLNIKTGKLEMSYSKFKTKSLSFLGTFILKVAESLQLVTVHQSET
 EDGEFTECNMNTLINLLLKVLGPIHERNLTLLLLLLQILGSAITFSIRYQLVRLFYDV

TRTRPLEQKLISEEDLAANDILDYKDDDDKV

Chromatograms:

https://cdn.origene.com/chromatograms/mk6376_f03.zip

Restriction Sites:

Sgfl-Mlul

Cloning Scheme:

Cloning sites used for ORF Shutting:



* The last codon before the Stop codon of the ORF

ACCN: NM_001382

ORF Size: 1224 bp

OTI Disclaimer: The molecular sequence of this clone aligns with the gene accession number as a point of reference only. However, individual transcript sequences of the same gene can differ through naturally occurring variations (e.g. polymorphisms), each with its own valid existence. This clone is substantially in agreement with the reference, but a complete review of all prevailing variants is recommended prior to use. [More info](#)

OTI Annotation: This clone was engineered to express the complete ORF with an expression tag. Expression varies depending on the nature of the gene.

Components: The ORF clone is ion-exchange column purified and shipped in a 2D barcoded Matrix tube containing 10ug of transfection-ready, dried plasmid DNA (reconstitute with 100 ul of water).

Reconstitution Method:

1. Centrifuge at 5,000xg for 5min.
2. Carefully open the tube and add 100ul of sterile water to dissolve the DNA.
3. Close the tube and incubate for 10 minutes at room temperature.
4. Briefly vortex the tube and then do a quick spin (less than 5000xg) to concentrate the liquid at the bottom.
5. Store the suspended plasmid at -20°C. The DNA is stable for at least one year from date of shipping when stored at -20°C.

RefSeq: [NM_001382.4](#)
RefSeq Size: 2150 bp

RefSeq ORF: 1227 bp

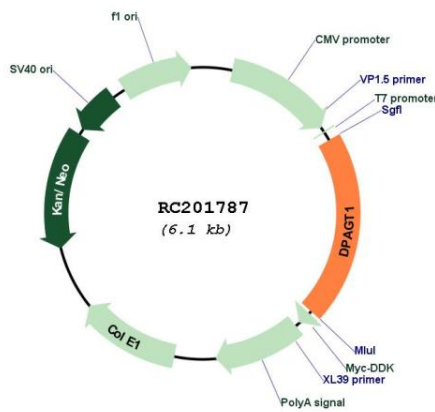
Locus ID: 1798

UniProt ID: [Q9H3H5](#)

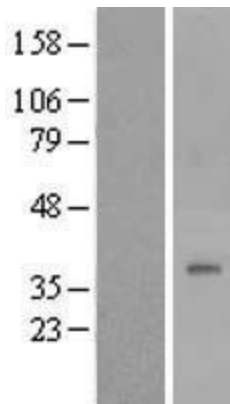
Cytogenetics: 11q23.3
Domains: Glycos_transf_4
Protein Families: Transmembrane
Protein Pathways: Metabolic pathways, N-Glycan biosynthesis
MW: 46.1 kDa

Gene Summary: The protein encoded by this gene is an enzyme that catalyzes the first step in the dolichol-linked oligosaccharide pathway for glycoprotein biosynthesis. This enzyme belongs to the glycosyltransferase family 4. This protein is an integral membrane protein of the endoplasmic reticulum. The congenital disorder of glycosylation type Ij is caused by mutation in the gene encoding this enzyme. [provided by RefSeq, Jul 2008]

Product images:



Circular map for RC201787



Western blot validation of overexpression lysate (Cat# [LY419988]) using anti-DDK antibody (Cat# [TA50011-100]). Left: Cell lysates from untransfected HEK293T cells; Right: Cell lysates from HEK293T cells transfected with RC201787 using transfection reagent MegaTran 2.0 (Cat# [TT210002]).