

## Product datasheet for RC201783

### MAP126 (SPAG5) (NM\_006461) Human Tagged ORF Clone

#### Product data:

Product Type:	Expression Plasmids
Product Name:	MAP126 (SPAG5) (NM_006461) Human Tagged ORF Clone
Tag:	Myc-DDK
Symbol:	MAP126
Synonyms:	DEEPEST; hMAP126; MAP126
Mammalian Cell Selection:	Neomycin
Vector:	pCMV6-Entry (PS100001)
E. coli Selection:	Kanamycin (25 ug/mL)
ORF Nucleotide Sequence:	>RC201783 ORF sequence Red=Cloning site Blue=ORF Green=Tags(s)

TTTTGTAATACGACTCACTATAGGGCGGCCGGAATTCGTCGACTGGATCCGGTACCGAGGAGATCTGCC  
GCC**CGATCGCC**

ATGTGGCGAGTGAAAAACTGAGCCTCAGCCTGTCGCCTTCGCCCAGACGGGAAAACCATCTATGAGAA  
CTCCTCTCCGTGAACTTACCCTGCAGCCCGGTGCCCTCACCAACTCTGGAAAAAGATCCCCCGCTTGCTC  
CTCGTGACCCCATCACTGTGCAAGCTGGGGCTGCAGGAAGGCAGCAACAACATCTCCAGTGGATTTT  
GTAATAACAAGAGGACAGACTTATCTTCAGAACATTTCACTCCTCAAAGTGGCTAGAAAATTGTC  
AGCATGAATCAGATGAGCAGCCTCTAGATCCAATTCGCCAAATTAGCTCTACTCCTAAAAGTCTGAGGA  
AGCAGTAGACCCACTGGGCAATTATATGGTTAAAACCATCGTCCTGTACCATCTCCACTGGGGCAGCAA  
CAAGACATGATATTTGAGGCCGTTTAGATACCATGGCAGAGACAACAGCATATCTTTAAATGGACCTT  
TGAGAACAGACGATCTGGTGAGAGAGGAGGTGGCACCCCTGCATGGGAGACAGGTTTTGAGAAATTGCTGC  
TGTATCTGAGAAACCTATCTTTCAGGAATCTCCGTCCCATCTCTTAGAGGAGTCTCCACCAAAATCCCTGT  
TCTGAACAACATACATTGCTCCAAGGAAAGCCTGAGCAGTAGAACTGAGGCTGTGCGTGAGGACTTAGTAC  
CTTCTGAAAGTAAACGCCTTCTTGCCTTCTCTGTTCTCTGGCTTTCCTTCAACTGCCTTGGCAGCAGA  
TTTCCGTGTCAATCATGTGGACCCAGAGGAGGAAATTGTAGAGCATGGAGCTATGGAGGAAAGAGAAATG  
AGGTTTCCACACATCCTAAGGAGTCTGAAACAGAAGATCAAGCACTTGTCTCAAGTGTGGAAGATATTC  
TGTCACATGCCTGACACCAAACTAGTAGAAATGGAATCCCAAGAAGCTCCAGGCCAGCAGTAGAAGA  
TGTTGGTAGGATTCTTGGCTCTGATACAGAGTCTTGGATGTCCTCCACTGGCTGGCTGAAAAAGGTGTA  
AATACCTCCGTATGCTGAAAAATCTCCGCCAAAGCTTATCCCTCCCTCGATGCTTCGGGATGCTGCAA  
TTGGCACTACCCCTTCTACTTGCTCGGTGGGACTTGGTTTACTCCTTCAGCACCACAGGAAAAGAG  
TACAAACACATCCAGACAGGCCTGGTTGGACCAAGCACAGTACTTCTGAGACAGAGCAGCTCCTGTGT  
GGCCGGCTCCAGATCTGACTGCCTTGTCTCGACATGACTTGAAGATAACCTGCTGAGCTCTTGTCA  
TTCTGGAGTTCTCTCCGCCAGCTTGGGACTGGAAGAGCCAGCTGGCTGTCCCTACCCAGAAACCA  
GGACAGTAGCACAGACTGACACATCTCACAGTGGGATAACTAATAAATTCAGCATCTTAAGGAGAGC



[View online »](#)

CATGAGATGGGACAGGCCCTACAGCAGGCCAGAAATGTCATGCAATCATGGGTGCTTATCTCTAAAGAGC  
TGATATCCTTGCTTACCTATCCCTGTTGCATTTAGAAGAAGATAAGACTACTGTGAGTCAGGAGTCTCG  
CGGTGCAGAAACATTGGTCTGTTGCTGTTTTGATTTGCTGAAGAAATTGAGGGCAAAGCTCCAGAGCCTC  
AAAGCAGAAAGGGAGGAGGCAAGGCACAGAGAGGAAATGGCTCTCAGAGGCAAGGATGCGGCAGAGATAG  
TGTTGGAGGCTTCTGTGCACACGCCAGCCAGCGCATCAGCCAGCTGGAACAGGACCTAGCATCCATGCC  
GGAATTCAGAGGCCTTCTGAAGGATGCCAGACCCAACGGTGGTGGGCTTCATGCCAAGCAAGAAGAGCTG  
GTTCCAGCAGACAGTGAAGTCTTACTTCTACCTTGAACAAGACTGGAGTCCATGCAACTGGATTATACAA  
CATGGACAGCTTTGCTGAGTCGGTCCCAGCAACTCACAGAGAAACTCACAGTCAAGAGCCAGCAAGCCCT  
GCAGGAACGTGATGTGGCAATTGAGGAAAAGCAGGAGTTTCTAGGGTGTGGAACAAGTCTCTGCCAG  
TTAGAGGAGTGCAAAGGCCAAACAGAACAAGTGGAGTTGGAAAACAGTCGTCTAGCAACAGATCTCCGGG  
CTCAGTTGCAGATTCTGGCCAACATGGACAGCCAGCTAAAAGAGCTACAGAGTCAGCATAACCCATTGTGC  
CCAGGACCTGGCTATGAAGGATGAGTACTCTGCCAGCTTACCCAGAGCAATGAGGAGCAGGCTGCTCAA  
TGGCAAAGGAAGAGATGGCACTAAAACACATGCAGGCAGAACTGCAGCAGCAACAAGCTGTCCTGGCCA  
AAGAGGTGCGGGACCTGAAAGAGACCTTGGAGTTTGCAGACCAGGAGAATCAGGTTGCTCACCTGGAGCT  
GGGTGAGTTGAGTGTCAATTGAAAACCACTGGAAGTCTCCGGGAGCGCAGCTTGCAGTGTGAGAAC  
CTCAAGGACACTGTAGAGAACCTAACGGCTAAACTGGCCAGCACCATAGCAGATAACCCAGGAGCAAGATC  
TGGAGAAAACACGGCAGTACTCTCAAAAGCTAGGGCTGCTGACTGAGCAACTACAGAGCCTGACTCTCTT  
TCTACAGACAAAATAAGGAGAAGACTGAAACAAGAGACCTTCTGCTGAGTACAGCCTGTCTCCACC  
CAGGAACACCCTCTGCCTAATGACAGGACCTTCTGGGAAGCATCTTGACAGCAGTGGCAGATGAAGAGC  
CAGAAATCAACTCCTGTGCCCTTGCTTGGAAAGTGACAAGAGTGTCTTACCCGAGTAGCATCAATGGTTTC  
CCTTCAGCCCGCAGAGACCCAGGCATGGAGGAGAGCCTGGCAGAAATGAGTATTATGACTACTGAGCTT  
CAGAGTCTTTGTTCCCTGCTACAAGAGTCTAAAGAAGAAGCCATCAGGACTCTGCAGCGAAAAATTTGTG  
AGCTGCAAGCTAGGCTGCAGGCCAGGAAGAACAGCATCAGGAAGTCCAGAAGGCAAAAGAAGCAGACAT  
AGAGAAGCTGAACCAGGCCTTGTGCTTGCCTACAAGAATGAAAAGGAGCTCCAGGAAGTGATACAGCAG  
CAGAAATGAGAAGATCCTAGAACAGATAGACAAGAGTGGCGAGCTCATAAGCCTTAGAGAGGAGGTGACCC  
ACCTTACCCGCTCACTTCGGCGTGCGGAGACAGAGACCAAAGTGTCCAGGAGGCCCTGGCAGGCCAGCT  
GGACTCCAAGTGCAGCCTATGGCCACCAATTGGATCCAGGAGAAAGTGTGGCTCTCTCAGGAGGTGGAC  
AAACTGAGAGTGTGTTCTGGAGATGAAAAATGAGAAGGAAAAACTCATGATCAAGTTCAGAGCCATA  
GAAATATCCTAGAGGAGAACCTTCGGCGCTCTGACAAGGAGTTAGAAAAACTAGATGACATTGTTTCAGCA  
TATTTATAAGACCCTGCTCTCTATTCCAGAGGTGGTGGGGATGCAAAGAACTACAGGGATTGCTGGAA  
TTTCTGAGC

ACGCGTACGCGGCCGCTCGAGCAGAAACTCATCTCAGAAGAGGATCTGGCAGCAAATGATATCCTGGATT  
ACAAGGATGACGACGATAAGGTTTAA

**Protein Sequence:** >RC201783 protein sequence  
 Red=Cloning site Green=Tags(s)

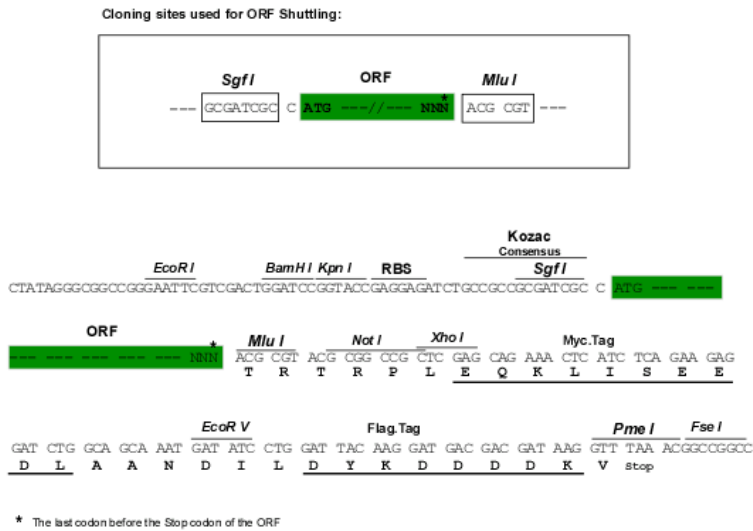
MWRVKKLSLSLSPSPQTGKPSMRTPLRELTLQPGALTNSGKRSPACSSLTPSLCKLGLQEGSNSSPVDF  
 VNNKRTDLSSEHFSHSSKWLETCQHESEDLDPQPISSTPKTSEEAVDPLGNMVKTIIVLVPSPGQQ  
 QDMIFEARLDTMAETNSISLNGPLRTDDLVREEVAPCMGDRFSEVAAVSEKPIFQESP SHLLEESPNPC  
 SEQLHCSKESLSSRTEAVREDLVPSESNAPLSSVWLWSPSTALAADFRVNHVDPEEEIVEHGAMEEREM  
 RFPTHPKESSETEDQALVSSVEDILSTCLTPNLVEMESQEAPGPAVEDVGRILGSDTESWMSPLAWLEKGV  
 NTSVMLENLRQSLSLPSMLRDAAGTTPFSTCSVGTWFTPSAPQEKTSTNTSQTGLVGTKHSTSETEQLLC  
 GRPPDLTALSRHDLEDNLLSSLVILEVLSRQLRDWKSQAVPHPETQDSSTQTDTS HSGITNKLQHLKES  
 HEMGQALQQARNVMQSWVLSKELISLLHL SLLHLEEDKTTVSQESRRAETLVCCCFD LKKLRAKLSL  
 KAEREEARHREEMALRGKDAAEIVLEAFCAHASQRISQLEQDLASMPREFRGLLKDAQTQLVGLHAKQEEL  
 VQQTVSLTSTLQQDWRSMQLDYTTWTALLSRSRQLTEKLVKSSQALQERDVAIEEKQEVSRVLEQVSAQ  
 LEECKGQTEQLELENSRLATDLRAQLQILANMDSQLKELQSQHTHCAQDLAMKDELLCQLTQSNEEQAAQ  
 WQKEEMALKHMQAELQQQAVLAKEVRDLKETLEFADQENQVAHLELGGVEQCLKTTLEVL RERSLQCN  
 LKDTVENLTAKLASTIADNQEQLKTRQYSQKGLLLEQLQSLTFLQTKLKEKTEQETLLLSTACPT  
 QEHPLPNDRFTLGSILTAVADEEPESTPVPLLGSDKSAFTRVASMVSLQPAETPGMEESLAEMSIMTTEL  
 QSLCSLLQESKEEAIRTLQRKICELQARLQAQEEQHVEVQKAKEADIEKLNQALCLRYKNEKELQEVIIQQ  
 QNEKILEQIDKSGELISLREEVTHLTRSLRRAETETKVLQEALAGQLDNCQPMATNWIQEKVWLSQEV  
 KLRVMFLEMKNEKELMIKFQSHRNILEENLRSDKELEKLDIVQHIYKTLLSIPEVVRGCKELQGLLE  
 FLS

TRTRPLEQKLISEEDLAANDILDYKDDDDKV

**Chromatograms:** [https://cdn.origene.com/chromatograms/mk6084\\_d12.zip](https://cdn.origene.com/chromatograms/mk6084_d12.zip)

**Restriction Sites:** SgfI-MluI

**Cloning Scheme:**

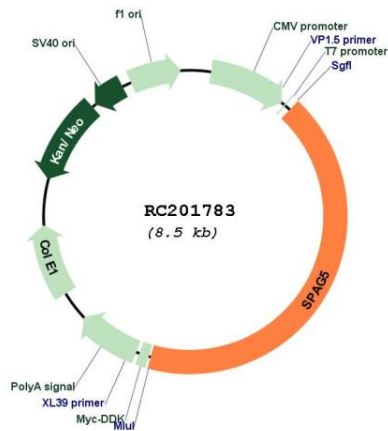


**ACCN:** NM\_006461

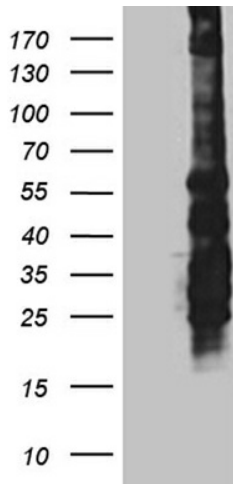
**ORF Size:** 3579 bp

<b>OTI Disclaimer:</b>	<p>Due to the inherent nature of this plasmid, standard methods to replicate additional amounts of DNA in E. coli are highly likely to result in mutations and/or rearrangements. Therefore, OriGene does not guarantee the capability to replicate this plasmid DNA. Additional amounts of DNA can be purchased from OriGene with batch-specific, full-sequence verification at a reduced cost. Please contact our customer care team at <a href="mailto:custsupport@origene.com">custsupport@origene.com</a> or by calling 301.340.3188 option 3 for pricing and delivery.</p> <p>The molecular sequence of this clone aligns with the gene accession number as a point of reference only. However, individual transcript sequences of the same gene can differ through naturally occurring variations (e.g. polymorphisms), each with its own valid existence. This clone is substantially in agreement with the reference, but a complete review of all prevailing variants is recommended prior to use. <a href="#">More info</a></p>
<b>OTI Annotation:</b>	This clone was engineered to express the complete ORF with an expression tag. Expression varies depending on the nature of the gene.
<b>Components:</b>	The ORF clone is ion-exchange column purified and shipped in a 2D barcoded Matrix tube containing 10ug of transfection-ready, dried plasmid DNA (reconstitute with 100 ul of water).
<b>Reconstitution Method:</b>	<ol style="list-style-type: none"> <li>1. Centrifuge at 5,000xg for 5min.</li> <li>2. Carefully open the tube and add 100ul of sterile water to dissolve the DNA.</li> <li>3. Close the tube and incubate for 10 minutes at room temperature.</li> <li>4. Briefly vortex the tube and then do a quick spin (less than 5000xg) to concentrate the liquid at the bottom.</li> <li>5. Store the suspended plasmid at -20°C. The DNA is stable for at least one year from date of shipping when stored at -20°C.</li> </ol>
<b>Note:</b>	Plasmids are not sterile. For experiments where strict sterility is required, filtration with 0.22um filter is required.
<b>RefSeq:</b>	<a href="#">NM_006461.4</a>
<b>RefSeq Size:</b>	3824 bp
<b>RefSeq ORF:</b>	3582 bp
<b>Locus ID:</b>	10615
<b>UniProt ID:</b>	<a href="#">Q96R06</a>
<b>Cytogenetics:</b>	17q11.2
<b>Protein Families:</b>	Druggable Genome, Stem cell - Pluripotency
<b>MW:</b>	134.4 kDa
<b>Gene Summary:</b>	This gene encodes a protein associated with the mitotic spindle apparatus. The encoded protein may be involved in the functional and dynamic regulation of mitotic spindles. [provided by RefSeq, Jul 2008]

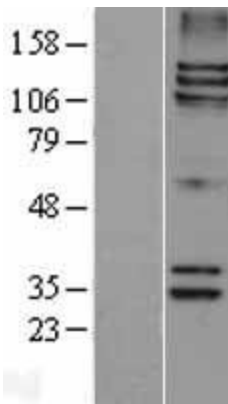
Product images:



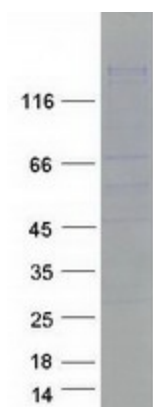
Circular map for RC201783



HEK293T cells were transfected with the pCMV6-ENTRY control (Cat# [PS100001], Left lane) or pCMV6-ENTRY SPAG5 (Cat# RC201783, Right lane) cDNA for 48 hrs and lysed. Equivalent amounts of cell lysates (5 ug per lane) were separated by SDS-PAGE and immunoblotted with anti-SPAG5 (Cat# [TA810452])(1:2000). Positive lysates [LY401941] (100ug) and [LC401941] (20ug) can be purchased separately from OriGene.



Western blot validation of overexpression lysate (Cat# [LY401941]) using anti-DDK antibody (Cat# [TA50011-100]). Left: Cell lysates from untransfected HEK293T cells; Right: Cell lysates from HEK293T cells transfected with RC201783 using transfection reagent MegaTran 2.0 (Cat# [TT210002]).



Coomassie blue staining of purified SPAG5 protein (Cat# [TP301783]). The protein was produced from HEK293T cells transfected with SPAG5 cDNA clone (Cat# RC201783) using MegaTran 2.0 (Cat# [TT210002]).