

Product datasheet for **RC201774**

CRELD1 (NM_001031717) Human Tagged ORF Clone

Product data:

Product Type:	Expression Plasmids
Product Name:	CRELD1 (NM_001031717) Human Tagged ORF Clone
Tag:	Myc-DDK
Symbol:	CRELD1
Synonyms:	AVSD2; CIRPIN
Mammalian Cell Selection:	Neomycin
Vector:	pCMV6-Entry (PS100001)
E. coli Selection:	Kanamycin (25 ug/mL)



[View online »](#)

ORF Nucleotide Sequence:

>RC201774 ORF sequence
 Red=Cloning site Blue=ORF Green=Tags(s)

TTTTGTAATACGACTCACTATAGGGCGGCCGGAATTCGTCGACTGGATCCGGTACCGAGGAGATCTGCC
 GCC**CGGATCGCC**

ATGGCCCCATGGCCCCGAAGGGCCTAGTCCCAGCTGTGCTCTGGGGCCTCAGCCTCTTCTCAACCTCC
 CAGGACCTATCTGGCTCCAGCCCTCTCCACCTCCCAGTCTTCTCCCCCGCTCAGCCCCATCCGTGTCA
 TACCTGCCGGGACTGGTTGACAGCTTTAAACAAGGGCCTGGAGAGAACCATCCGGGACAACCTTGGAGGT
 GAAACTGCCTGGGAGGAAGAGAATTTGTCCAAATACAAAGACAGTGAGACCCGCTGGTAGAGGTGC
 TGGAGGGTGTGTGCAGCAAGTCAGACTTCGAGTGCCACCGCTGCTGGAGCTGAGTGAGGAGCTGGTGA
 GAGCTGGTGGTTTACAAGCAGCAGGAGGCCCGGACCTTCCAGTGGCTGTGCTCAGATTCCCTGAAG
 CTCTGTGCCCGCAGGCACCTTCGGGCCCTCCTGCCTCCCTGTCTGGGGAACAGAGAGGCCCTGCC
 GTGGCTACGGGCAGTGTGAAGGAGAAGGGACACGAGGGGGCAGCGGGCACTGTGACTGCCAAGCCGGCTA
 CGGGGTGAGGCCTGTGGCCAGTGTGGCCTTGGCTACTTTGAGGCAGAACGCAACGCCAGCCATCTGGTA
 TGTTCCGGCTGTTTTGGCCCTGTGCCGATGCTCAGGACCTGAGGAATCAAAGTGTGCAATGCAAGA
 AGGGCTGGGCCCTGCATCACCTCAAGTGTGTAGACATTGATGAGTGTGGCACAGAGGGAGCAACTGTGG
 AGCTGACCAATTCTGCGTGAACACTGAGGGCTCCTATGAGTGCCGAGACTGTGCCAAGGCCTGCCTAGGC
 TGCATGGGGCAGGGCCAGGTCGCTGTAAGAAGTGTAGCCCTGGCTATCAGCAGGTGGGCTCCAAGTGTG
 TCGATGTGGATGAGTGTGAGACAGAGGTGTGTCGGGAGAGAACAAAGCAGTGTGAAAACCCGAGGGCGG
 TTATCGCTGCATCTGTGCCGAGGGCTACAAGCAGATGGAAGGCATCTGTGTGAAGGAGCAGATCCAGGT
 GCATCCCCATCTTAAGTATTTAACCCCTGAAACAACCCGACGCTGGAAGTTGGGTTCTCATCCCCACT
 CTACATATGTA AAAATGAAGATGCAGAGAGATGAAGCTACTTTCCAGGGCTATATGGCAAGCAAGTGC
 AAAGTGGGATCCCAATCCAGACAGTCTGACCGTGGAAACGAGACTCATACACAGTCAGCAGGCTTCTTCT
 CAGAGA

ACGCGTACGCGGCCGCTCGAGCAGAACTCATCTCAGAAGAGGATCTGGCAGCAAATGATATCCTGGATT
 ACAAGGATGACGACGATAAGGTTTAA

Protein Sequence:

>RC201774 protein sequence
 Red=Cloning site Green=Tags(s)

MAPWPPKGLVPAVLWGLSLFNLPGPIWLQSPPPQSSPPPQPHPCHTCRGLVDSFNKGLERTIRDNFGG
 GNTAWEEENLSKYKDSETRLVEVLEGVCSKSDFECHRLLELSEELVESWWFHKQQEAPDLFWLCSDSLK
 LCCPAGTFGPSCLPCPGGTERPCGGYGQCEGEGTRGSGHDCQAGYGGEACGQCGLGYFEARNASHLV
 CSACFGPCARCSGPEESNCLQCKKGWALHHLKVDIDECGTEGANCGADQFCVNTEGSYECRDCAKACLG
 CMGAGPGRCKKCSPGYQQVGSKCLDVDECETEVCPCGENKQCENEGGYRICAEGYKQMEGICVKEQIPG
 AFPILTLTLPETTRRWKLGSHPHSTYVKMKMRDEATFPGLYGKQVAKLGSQSRQSDRGTRLIHSQQASS
 QR

TRTRPLEQKLISEEDLAANDILDYKDDDDKV

Chromatograms:

https://cdn.origene.com/chromatograms/mk6270_g02.zip

Restriction Sites:

SgfI-MluI

Cloning Scheme:


ACCN: NM_001031717

ORF Size: 1266 bp

OTI Disclaimer: The molecular sequence of this clone aligns with the gene accession number as a point of reference only. However, individual transcript sequences of the same gene can differ through naturally occurring variations (e.g. polymorphisms), each with its own valid existence. This clone is substantially in agreement with the reference, but a complete review of all prevailing variants is recommended prior to use. [More info](#)

OTI Annotation: This clone was engineered to express the complete ORF with an expression tag. Expression varies depending on the nature of the gene.

Components: The ORF clone is ion-exchange column purified and shipped in a 2D barcoded Matrix tube containing 10ug of transfection-ready, dried plasmid DNA (reconstitute with 100 ul of water).

Reconstitution Method:

1. Centrifuge at 5,000xg for 5min.
2. Carefully open the tube and add 100ul of sterile water to dissolve the DNA.
3. Close the tube and incubate for 10 minutes at room temperature.
4. Briefly vortex the tube and then do a quick spin (less than 5000xg) to concentrate the liquid at the bottom.
5. Store the suspended plasmid at -20°C. The DNA is stable for at least one year from date of shipping when stored at -20°C.

RefSeq: [NM_001031717.3](#)

RefSeq Size: 2406 bp

RefSeq ORF: 1269 bp

Locus ID: 78987

UniProt ID: [Q96HD1](#)

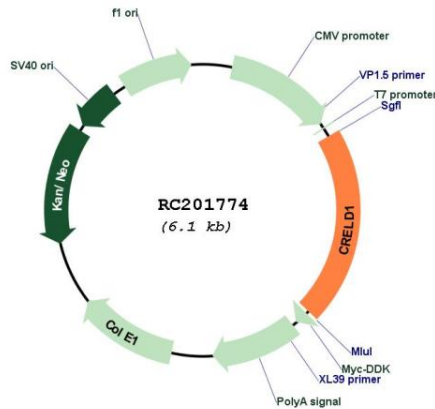
Cytogenetics: 3p25.3

Protein Families: Transmembrane

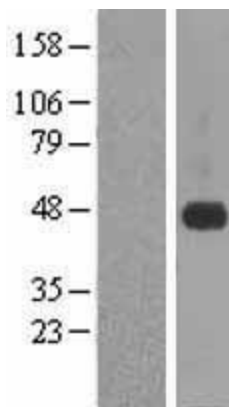
MW: 45.9 kDa

Gene Summary: This gene encodes a member of a subfamily of epidermal growth factor-related proteins. The encoded protein is characterized by a cysteine-rich with epidermal growth factor-like domain. This protein may function as a cell adhesion molecule. Mutations in this gene are the cause of atrioventricular septal defect. Alternate splicing results in multiple transcript variants. [provided by RefSeq, Apr 2010]

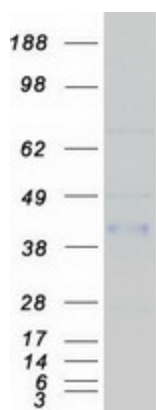
Product images:



Circular map for RC201774



Western blot validation of overexpression lysate (Cat# [LY422168]) using anti-DDK antibody (Cat# [TA50011-100]). Left: Cell lysates from untransfected HEK293T cells; Right: Cell lysates from HEK293T cells transfected with RC201774 using transfection reagent MegaTran 2.0 (Cat# [TT210002]).



Coomassie blue staining of purified CRELD1 protein (Cat# [TP301774]). The protein was produced from HEK293T cells transfected with CRELD1 cDNA clone (Cat# RC201774) using MegaTran 2.0 (Cat# [TT210002]).