

Product datasheet for RC201773

THUMPD1 (NM_017736) Human Tagged ORF Clone

Product data:

Product Type:	Expression Plasmids
Product Name:	THUMPD1 (NM_017736) Human Tagged ORF Clone
Tag:	Myc-DDK
Symbol:	THUMPD1
Synonyms:	Tan1
Mammalian Cell Selection:	Neomycin
Vector:	pCMV6-Entry (PS100001)
E. coli Selection:	Kanamycin (25 ug/mL)
ORF Nucleotide Sequence:	>RC201773 ORF sequence Red=Cloning site Blue=ORF Green=Tags(s)

TTTTGTAATACGACTCACTATAGGGCGGCCGGAATTCGTCGACTGGATCCGGTACCGAGGAGATCTGCC
GCC**CGATCGCC**

ATGGCGGCCCTGCCAGCAGACTACTCAGCCTGGCGCGGGAAGCGCAAAGGCAAGGCTCAGTATGTGC
TGGCCAAGCGCGCTCGGCGCTGCGACGCTGGCGGGCCCCGTAGCTAGAGCCCGGCTACAGGGCATCCT
CATCACCTGCAATATGAACGAGCGCAAGTGCCTGGAGGAGGCTACAGCCTCCTCAACGAATACGGCGAC
GACATGTATGGCCAGAAAAGTTTACAGACAAGGATCAGCAGCCCTCTGGAAGTGAGGGAGAGGATGATG
ATGCGGAGGCTGCCTTGAAGAAAGAAGTTGGTGACATTAAGGCATCTACAGAGATGAGGTTAAGAAGATT
CCAGTCAGTGGAAAGTGGAGCAAATAACGTTGTCTTCATCAGGACTTGGGATAGAGCCTGAGAAATTG
GTGCATCATATTCTCCAGGATATGTACAAAACCAAGAAAAGAAGACTCGAGTTATTTGCGAATGTTAC
CCATCTCAGGCACATGCAAGGCTTTTTTGAAGATATGAAAAATATGCAGAAACATTTTTGGAACCCTG
GTTTAAAGCTCCAAACAAGGGACATTTTCAGATTGTGTACAAATCTCGAAATAACAGTCATGTGAATAGA
GAAGAAGTTATCAGAGAATTGGCAGGAATAGTGTGCACCCTCAATTCAGAAAATAAAGTGGATCTCACCA
ATCCACAGTACACAGTGGTAGTAAATCATCAAAGCTGTCTGTTGCCTGAGTGTGTGAAAAGATTACAT
GTTGTTTAGAAAATACAATCTCCAGGAGGTGGTGAAGAGCCCTAAGGATCCGTCACAGCTTAACCTCAAAG
CAGGAAAATGGGAAAGAAGCTAACTGGAATCTGCGGACAAATCAGACAAAACAACACAGCAGAAGGAA
AAAATAACCAGCAGGTACCAGAGAATACTGAGGAGCTGGGGCAGACAAAACCAACGCTCTAATCCACAGGT
GGTAAATGAGGGAGGAGCCAAACCTGAACTTGCAAGTCAAGCCACAGAAGGATCCAAGTCAAATGAAAAT
GACTTCTCA

ACGCGTACGCGGCCGCTCGAGCAGAACTCATCTCAGAAGAGGATCTGGCAGCAAATGATATCCTGGATT
ACAAGGATGACGACGATAAGGTTAA



[View online »](#)

Protein Sequence: >RC201773 protein sequence
Red=Cloning site Green=Tags(s)

MAAPAQTTQPGGGKRGKAQYVLAKRARRCDAGGPRQLEPLQGILITCNMNERKCVVEEAYSLLNEYGD
 DMYGPEKFTDKDQQPSGSEGEDDDAEALKKEVGDIKASTEMRLRRFQSVESGANNVVFIRTLGIEPEKL
 VHHILQDMYKTKKKKTRVILRMLPISGTCKAFLEDMKKYAETFLEPWFKAPNKGTFQIVYKSRNNSHVNR
 EEVIRELAGIVCTLNSENKVDLTNPQYTVVVEI I KAVCCLSVVKDYMLFRKYNLQEVVKS PKDPSQLNSK
 QGNGKEAKLESADKSDQNNTAEGKNNQQVPENTEELGQTKP TSNPQVVNEGGAKPELASQATEGSKSNEN
 DFS

TRTRPLEQKLISEEDLAANDILDYKDDDDKV

Chromatograms: https://cdn.origene.com/chromatograms/mk6083_c02.zip

Restriction Sites: SgfI-MluI

Cloning Scheme:



* The last codon before the Stop codon of the ORF

ACCN: NM_017736

ORF Size: 1059 bp

OTI Disclaimer: The molecular sequence of this clone aligns with the gene accession number as a point of reference only. However, individual transcript sequences of the same gene can differ through naturally occurring variations (e.g. polymorphisms), each with its own valid existence. This clone is substantially in agreement with the reference, but a complete review of all prevailing variants is recommended prior to use. [More info](#)

OTI Annotation: This clone was engineered to express the complete ORF with an expression tag. Expression varies depending on the nature of the gene.

Components: The ORF clone is ion-exchange column purified and shipped in a 2D barcoded Matrix tube containing 10ug of transfection-ready, dried plasmid DNA (reconstitute with 100 ul of water).

Reconstitution Method:

1. Centrifuge at 5,000xg for 5min.
2. Carefully open the tube and add 100ul of sterile water to dissolve the DNA.
3. Close the tube and incubate for 10 minutes at room temperature.
4. Briefly vortex the tube and then do a quick spin (less than 5000xg) to concentrate the liquid at the bottom.
5. Store the suspended plasmid at -20°C. The DNA is stable for at least one year from date of shipping when stored at -20°C.

Note: Plasmids are not sterile. For experiments where strict sterility is required, filtration with 0.22um filter is required.

RefSeq: [NM_017736.5](#)

RefSeq Size: 4416 bp

RefSeq ORF: 1062 bp

Locus ID: 55623

UniProt ID: [Q9NXG2](#)

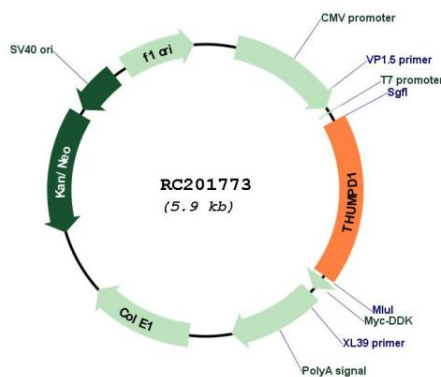
Cytogenetics: 16p12.3

Domains: THUMP

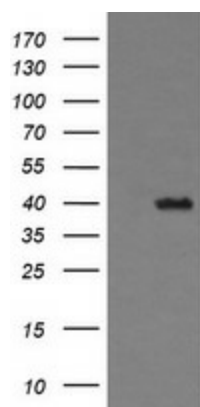
MW: 39.3 kDa

Gene Summary: Functions as a tRNA-binding adapter to mediate NAT10-dependent tRNA acetylation (PubMed:25653167).[UniProtKB/Swiss-Prot Function]

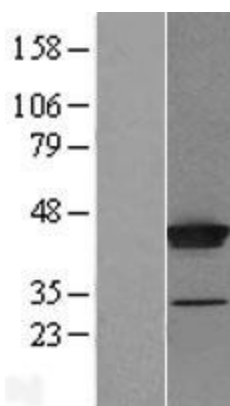
Product images:



Circular map for RC201773



HEK293T cells were transfected with the pCMV6-ENTRY control (Cat# [PS100001], Left lane) or pCMV6-ENTRY THUMPD1 (Cat# RC201773, Right lane) cDNA for 48 hrs and lysed. Equivalent amounts of cell lysates (5 ug per lane) were separated by SDS-PAGE and immunoblotted with anti-THUMPD1 (Cat# [TA505871]). Positive lysates [LY413587] (100ug) and [LC413587] (20ug) can be purchased separately from OriGene.



Western blot validation of overexpression lysate (Cat# [LY413587]) using anti-DDK antibody (Cat# [TA50011-100]). Left: Cell lysates from untransfected HEK293T cells; Right: Cell lysates from HEK293T cells transfected with RC201773 using transfection reagent MegaTran 2.0 (Cat# [TT210002]).