

## Product datasheet for **RC201772**

### HEAB (CLP1) (NM\_006831) Human Tagged ORF Clone

#### Product data:

Product Type:	Expression Plasmids
Product Name:	HEAB (CLP1) (NM_006831) Human Tagged ORF Clone
Tag:	Myc-DDK
Symbol:	HEAB
Synonyms:	hClp1; HEAB
Mammalian Cell Selection:	Neomycin
Vector:	pCMV6-Entry (PS100001)
E. coli Selection:	Kanamycin (25 ug/mL)



[View online »](#)

**ORF Nucleotide Sequence:**

>RC201772 ORF sequence  
 Red=Cloning site Blue=ORF Green=Tags(s)

TTTTGTAATACGACTCACTATAGGGCGGCCGGAATTCGTCGACTGGATCCGGTACCGAGGAGATCTGCC  
 GCCCGCATCGCC

ATGGGAGAAGAGGCTAATGATGACAAGAAGCCAACCACTAAATTTGAACTAGAGCGAGAAACAGAACTTC  
 GCTTTGAGGTGGAGGCATCTCAGTCAGTTCAGTTGGAGTTGTTGACTGGCATGGCAGAGATCTTTGGCAC  
 AGAGCTGACCCGAAACAAGAAATTCACCTTTGATGCTGGTGCACAGGTGGCTGTTTTCACTTGGCATGGC  
 TGTCTGTGCAACTGAGCGGCCGCACTGAGGTGGCTTATGTCTCCAAGGACACTCCTATGTTGCTTTACC  
 TCAACACTCACACAGCCTTGAACAGATGCGGAGGCAAGCGAAAAGGAAGAAGAGCGAGGTCCCGGAGT  
 GATGGTAGTGGGCCCCACTGATGTGGGCAAGTCTACAGTGTGTCGCTTCTGCTCAACTACGAGTGCCT  
 TTGGGCCCGCTCCACTTATGTGGAGCTGGATGTGGGCCAGGGTTCTGTGTCCATCCCTGGTACCATGG  
 GGGCCCTCTACATCGAGCGCCCTGCAGATGTGCAAGAGGGTTTCTCTATCCAGGCCCTCTGGTGTATCA  
 TTTTGGTTCCACCACTCCTGGCACTAACATCAAGCTTTATAATAAGATTACATCTCGTTTAGCAGATGTG  
 TTCAACCAAAGGTGTGAGGTGAACCGAAGGGCATCTGTGAGTGGCTGTGTATTAAACACCTGTGGCTGGG  
 TCAAGGGCTCTGGTTACCAGGCTCTGGTGCATGCAGCCTCAGCTTTTGAGGTGGATGTGCTTGTGTTCT  
 GGATCAAGAACGACTGTACAATGAACTGAAACGGGACCTCCCCACTTTGTACGCACTGTGCTGCTCCCT  
 AAATCTGGGGGTGTGGTGGAGCGCTCCAAGGACTTCCGGCGGGAATGTAGGGATGAGCGTATCCGTGAGT  
 ATTTTTATGGATTCCGAGGCTGTTTCTATCCCCATGCCTTCAATGTCAAATTTTCAGATGTGAAAATCTA  
 CAAAGTTGGGGCACCCACCATCCAGACTCCTGTTTACCTTTGGGCATGTCTCAAGAGGATAATCAGCTC  
 AAGCTAGTACCTGTCCTCTGGCGGAGATATGGTGCACCACCTACTGAGTGTAGCACTGCCGAGGGTA  
 CAGAGGAGAACCTGTCCGAGACAAGTGTAGCTGGCTTCAATGTGGTGACCAGTGTGGACCTGGAGCATCA  
 GGTGTTTACTGTTCTGTCTCCAGCCCCTCGCCCACTGCCTAAGAACTTCTTCTCATCATGGATATCCGG  
 TTCATGGATCTGAAG

ACGCGTACGCGGCCGCTCGAGCAGAACTCATCTCAGAAGAGGATCTGGCAGCAAATGATATCCTGGATT  
 ACAAGGATGACGACGATAAGGTTTAA

**Protein Sequence:**

>RC201772 protein sequence  
 Red=Cloning site Green=Tags(s)

MGEEANDDKPPTTKFELERETELRFEVEASQSVQLELLTGMAEIFGTELTRNKKFTFDAGAKVAVFTWHG  
 CSVQLSGRTEVAYVSKDTPMLLYLNHTALEQMRRQAEKEEERGPRVMVVGPTDVGKSTVCRLLLNYAVR  
 LGRRPTYVELDVGQGSVSIPTMGALYIERPADVEEGFSIQAPLYVHFGSTTPGTNIKLYNKITSRLADV  
 FNQRCEVNRASVSGCVINTCGWVKSGYQALVHAASAFEVDVVVLDQERLYNELKRDLPHFVRTVLLP  
 KSGGVVERSKDFRRECRDERIREYFYGFRGCFYPHAFNVKFSVKIYKVGAPTIPDSCLPLGMSQEDNQL  
 KLVVPVTPGRDMVHLLSVSTAEGTEENLSETSVAGFIVVTSVDLEHQVFTVLSAPRPLPKNFLLIMDIR  
 FMDLK

TRTRPLEQKLISEEDLAANDILDYKDDDDKV

**Chromatograms:**

[https://cdn.origene.com/chromatograms/mk6083\\_a07.zip](https://cdn.origene.com/chromatograms/mk6083_a07.zip)

**Restriction Sites:**

SgfI-MluI

**Cloning Scheme:**


**ACCN:** NM\_006831

**ORF Size:** 1275 bp

**OTI Disclaimer:** The molecular sequence of this clone aligns with the gene accession number as a point of reference only. However, individual transcript sequences of the same gene can differ through naturally occurring variations (e.g. polymorphisms), each with its own valid existence. This clone is substantially in agreement with the reference, but a complete review of all prevailing variants is recommended prior to use. [More info](#)

**OTI Annotation:** This clone was engineered to express the complete ORF with an expression tag. Expression varies depending on the nature of the gene.

**Components:** The ORF clone is ion-exchange column purified and shipped in a 2D barcoded Matrix tube containing 10ug of transfection-ready, dried plasmid DNA (reconstitute with 100 ul of water).

**Reconstitution Method:**

1. Centrifuge at 5,000xg for 5min.
2. Carefully open the tube and add 100ul of sterile water to dissolve the DNA.
3. Close the tube and incubate for 10 minutes at room temperature.
4. Briefly vortex the tube and then do a quick spin (less than 5000xg) to concentrate the liquid at the bottom.
5. Store the suspended plasmid at -20°C. The DNA is stable for at least one year from date of shipping when stored at -20°C.

**RefSeq:** [NM\\_006831.3](#)

**RefSeq Size:** 1864 bp

**RefSeq ORF:** 1278 bp

**Locus ID:** 10978

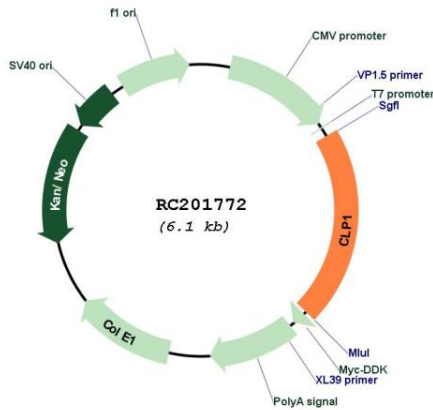
**UniProt ID:** [Q92989](#)

**Cytogenetics:** 11q12.1

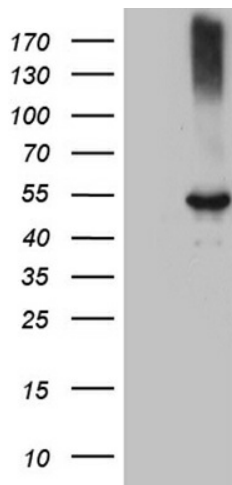
**MW:** 47.6 kDa

**Gene Summary:** This gene encodes a member of the Clp1 family. The encoded protein is a multifunctional kinase which is a component of the tRNA splicing endonuclease complex and a component of the pre-mRNA cleavage complex II. This protein is implicated in tRNA, mRNA, and siRNA maturation. Mutations in this gene are associated with pontocerebellar hypoplasia type 10 (PCH10). Alternatively splice transcript variants encoding different isoforms have been found for this gene. [provided by RefSeq, Sep 2014]

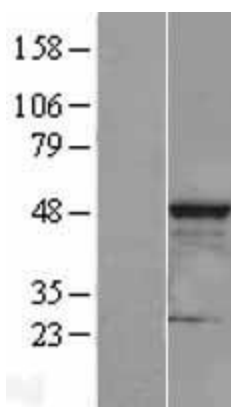
**Product images:**



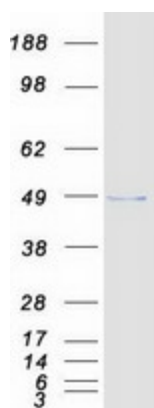
Circular map for RC201772



HEK293T cells were transfected with the pCMV6-ENTRY control (Cat# [PS100001], Left lane) or pCMV6-ENTRY CLP1 (Cat# RC201772, Right lane) cDNA for 48 hrs and lysed. Equivalent amounts of cell lysates (5 ug per lane) were separated by SDS-PAGE and immunoblotted with anti-CLP1 (Cat# [TA809653]). Positive lysates [LY402047] (100ug) and [LC402047] (20ug) can be purchased separately from OriGene.



Western blot validation of overexpression lysate (Cat# [LY402047]) using anti-DDK antibody (Cat# [TA50011-100]). Left: Cell lysates from untransfected HEK293T cells; Right: Cell lysates from HEK293T cells transfected with RC201772 using transfection reagent MegaTran 2.0 (Cat# [TT210002]).



Coomassie blue staining of purified CLP1 protein (Cat# [TP301772]). The protein was produced from HEK293T cells transfected with CLP1 cDNA clone (Cat# RC201772) using MegaTran 2.0 (Cat# [TT210002]).