

Product datasheet for **RC201770**

WDR46 (NM_005452) Human Tagged ORF Clone

Product data:

Product Type:	Expression Plasmids
Product Name:	WDR46 (NM_005452) Human Tagged ORF Clone
Tag:	Myc-DDK
Symbol:	WDR46
Synonyms:	BING4; C6orf11; FP221; UTP7
Mammalian Cell Selection:	Neomycin
Vector:	pCMV6-Entry (PS100001)
E. coli Selection:	Kanamycin (25 ug/mL)



[View online »](#)

ORF Nucleotide Sequence:

>RC201770 ORF sequence
 Red=Cloning site Blue=ORF Green=Tags(s)

TTTTGTAATACGACTCACTATAGGGCGGCCGGAATTCGTCGACTGGATCCGGTACCGAGGAGATCTGCC
 GCC**CGATCGCC**

ATGGAGACAGCCCCAAGCCGGCAAGGATGTCCCGCCAAGAAAGACAAACTTCAGACCAAGAGAAAGA
 AACCGCGCGGATCTGGGAGGAAGAGACCGTTCGACCACAGCCGAGCCTCTCCAGGGCCTCCTCGTAA
 CAAGAAGAAATCGGGAGCTCCGTCCTCAGAGACAAAAATGCTTACATCTTAAAGAAGTCTCGGATCTCT
 AAGAAGCCTCAGGTCCCGAAGAAACCCGAGAATGGAAGAACCCGGAGTCCAGCGCGGCTGTCCGGGG
 CCCAAGATCCATCCAGGCCCGCCCGTCCCTGTGGAAGTGGTCCAGAAGTCTGTGCGATTGACAA
 ATCCCGAAAGCTACCACATTCTAAAGCCAAAACCTGAAGCCGACTTGAGGTGGCTGAAGCTGAGGAAGAG
 GAAACAAGTATCAAAGCTGCTCGTTCTGAGCTGCTGCTGCTGAAGAACCTGGGTTTCTGGAAGGGGAGG
 ATGGGGAAGACACAGCAAAGATATGCCAGGCTGACATTGTGGAGGCTGTGGACATTGCAAGTGCAGCCAA
 GCACTTTGACTTGAATCTGCGGCAGTTTGGACCCTACAGACTAACTACTCTGAACTGGAAGACACCTG
 GCTTTTGGAGGGCGCCGAGGTATGTGGCTGCCCTTGATTGGGTAACAAAGAAGCTTATGTGCGAGATCA
 ACGTCATGGAGGCGGTGCGGGACATCCGGTTTCTCCATTCTGAGGCACTGCTTGCTGTTGCTCAGAACCG
 CTGGCTCCACATCTATGACAATCAGGGCATTGAGCTCCACTGTATCCGCCGCTGTGACCGAGTAACCGG
 CTTGAGTTCCTGCCCTTCCACTTCTCCTGGCTACAGTTCAGAAACAGGGTTTCTAACCTACCTGGATG
 TGTCAAGTGGGGAAGATTGTGGCAGCTCTGAATGCTCGAGCTGGGCGGCTCGATGTTATGAGTCAGAACCC
 TTAACAATGCCGTCATCCATCTCGACACAGCAATGGTACTGTGTCTTTATGGAGTCCAGCTATGAAGGAG
 CCACTGGCAAAGATTCTGTGTCATCGTGGTGGGTCCGGGCTGTGGCAGTAGATTCTACAGGCACGTACA
 TGGCCACCTCTGGCCTAGACCACCAGCTGAAGATCTTTGACTTGGAGGGGACTACCAGCCTCTGAGCAC
 TCGGACCCTGCCCATGGAGCAGGGCACCTGGCCTTCTCCAGAGGGGACTGCTGGTGGCGGAATGGGT
 GACGTTGTCAACATCTGGGCAGGGCAGGGCAAGGCCAGCCACCCTCCCTTGAACAGCCCTACCTCACCC
 ACCGGCTCTCAGGCCCTGTGCATGGCCTTCACTTCTGCCCTTTGAAGATGTGCTGGGGGTGGGACAC
 TGGGGGCATCACCAGCATGCTGGTCCCTGGGGCCGGTGGAGCCAACTTCGATGGCCTGGAGAGTAATCCA
 TACAGAAGCCGGAAGCAGCGCCAGGAGTGGGAGGTGAAGGCCCTGCTAGAGAAGGTACCTGCAGAGCTTA
 TTTGCTGGACCCAGGACCTGGCCGAGGTGGATGTCATCTCCCTGGAGCAGGAAAGAAGGAGCAGAT
 AGAGAGGCTGGGCTATGACCCGAGGCTAAGGCTCCCTCCAGCCAAAGCCAAAGCAGAAGGGCCGAGC
 TCCACGGCAAGCCTGGTGAAGAGGAAGAGGAAGGTCATGGATGAGGAACACAGGGACAAGTCCGGCAGA
 GCCTTCAGCAGCAGCATATAAGGAGGGCAAGGCCAAGCCACGGGGGCCCGCCATCTGCCCTGGACAG
 ATTTGTGCGC

ACGCGTACGCGGCCGCTCGAGCAGAAACTCATCTCAGAAGAGGATCTGGCAGCAAATGATATCCTGGATT
 ACAAGGATGACGACGATAAGGTTTAA

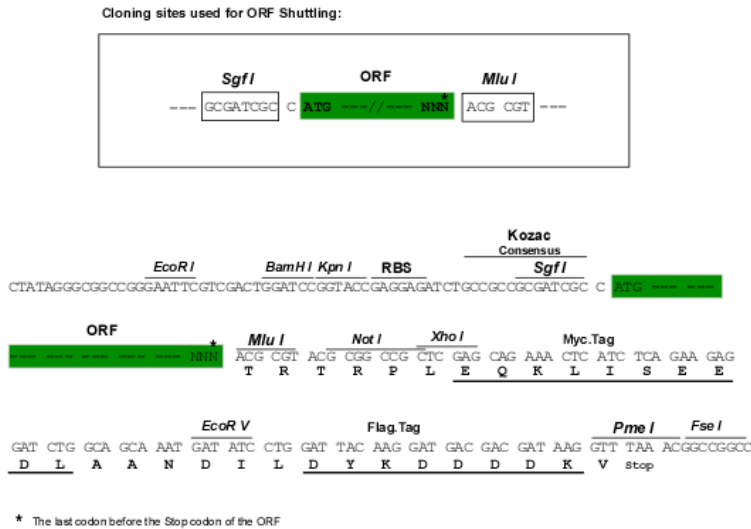
Protein Sequence:

>RC201770 protein sequence
 Red=Cloning site Green=Tags(s)

METAPKPGKDVPKDKLQTKRKKPRRYWEEETVPTTAGASPGPPRNKNRELRPQRPKNAYILKKSRI
 KKPQVPKPPREWKNPESQRGLSGAQDPFPGPAPVPEVQKFCRIDKSRKLPHSKAKTRSRLEVAEAAA
 ETSIKAARSELLLAEEPFLGEGEDGDTAKICQADIVEAVDIASAANKHFDLNLRFQPYRLNYSRTGRHL
 AFGGRRGHVAALDWVTKKLMCEINVMEAVRDIRFLHSEALLAVAQNRWLHIYDNQGIELHCIRRCRDRVTR
 LEFLPFHFLLATASETGFLTYLDVSVGIYAALNARAGRLDVMSQNPYNAVIHLGHSNGTVSLWSPAMKE
 PLAKILCHRGGVRAVAVDSTGYMATSGLDHQLKIFDLRGTYPQLSTRTLPHGAGHLAFSQRGLLVAGMG
 DVVNIWAGQGKASPPSLEQPYLTHRLSGPVHGLQFCPFEDVLGVGHTGGITSMVPGAGEPNFDGLESNP
 YRSRKQRQEWKALLEKVPALICLDPRALAEVDVLSLEQKKEQIERLGYDPQAKAPFPKPKQKGRS
 STASLVKRRKVMDEEHRDKVRQSLQQQHHKEAKAKPTGARPSALDRFVR

TRTRPLEQKLISEEDLAANDILDYKDDDDKV

Chromatograms: https://cdn.origene.com/chromatograms/mk6376_h06.zip
 Restriction Sites: SgfI-MluI
 Cloning Scheme:



ACCN: NM_005452

ORF Size: 1830 bp

OTI Disclaimer: The molecular sequence of this clone aligns with the gene accession number as a point of reference only. However, individual transcript sequences of the same gene can differ through naturally occurring variations (e.g. polymorphisms), each with its own valid existence. This clone is substantially in agreement with the reference, but a complete review of all prevailing variants is recommended prior to use. [More info](#)

OTI Annotation: This clone was engineered to express the complete ORF with an expression tag. Expression varies depending on the nature of the gene.

Components: The ORF clone is ion-exchange column purified and shipped in a 2D barcoded Matrix tube containing 10ug of transfection-ready, dried plasmid DNA (reconstitute with 100 ul of water).

Reconstitution Method:

1. Centrifuge at 5,000xg for 5min.
2. Carefully open the tube and add 100ul of sterile water to dissolve the DNA.
3. Close the tube and incubate for 10 minutes at room temperature.
4. Briefly vortex the tube and then do a quick spin (less than 5000xg) to concentrate the liquid at the bottom.
5. Store the suspended plasmid at -20°C. The DNA is stable for at least one year from date of shipping when stored at -20°C.

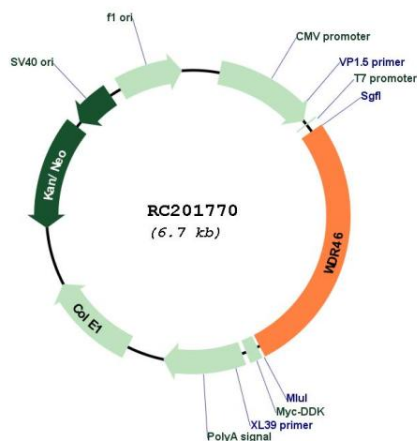
RefSeq: [NM_005452.4](#), [NP_005443.2](#)

RefSeq Size: 2363 bp

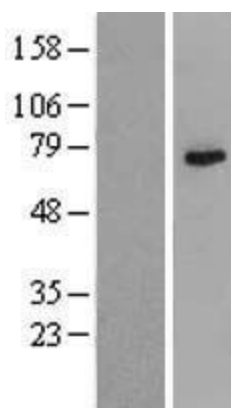
RefSeq ORF: 1833 bp

Locus ID: 9277
UniProt ID: [O15213](#)
Cytogenetics: 6p21.32
Domains: WD40
Protein Families: Druggable Genome
MW: 68 kDa
Gene Summary: Scaffold component of the nucleolar structure. Required for localization of DDX21 and NCL to the granular compartment of the nucleolus.[UniProtKB/Swiss-Prot Function]

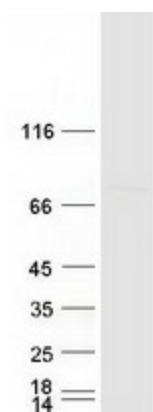
Product images:



Circular map for RC201770



Western blot validation of overexpression lysate (Cat# [LY417292]) using anti-DDK antibody (Cat# [TA50011-100]). Left: Cell lysates from untransfected HEK293T cells; Right: Cell lysates from HEK293T cells transfected with RC201770 using transfection reagent MegaTran 2.0 (Cat# [TT210002]).



Coomassie blue staining of purified WDR46 protein (Cat# [TP301770]). The protein was produced from HEK293T cells transfected with WDR46 cDNA clone (Cat# RC201770) using MegaTran 2.0 (Cat# [TT210002]).