

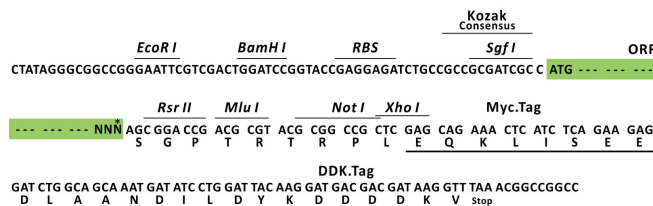
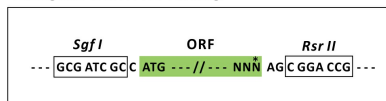
Product datasheet for RC201766L1

alpha 1 Catenin (CTNNA1) (NM_001903) Human Tagged Lenti ORF Clone

Product data:

Product Type:	Expression Plasmids
Product Name:	alpha 1 Catenin (CTNNA1) (NM_001903) Human Tagged Lenti ORF Clone
Tag:	Myc-DDK
Symbol:	alpha 1 Catenin
Synonyms:	CAP102; MDPT2
Mammalian Cell Selection:	None
Vector:	pLenti-C-Myc-DDK (PS100064)
E. coli Selection:	Chloramphenicol (34 ug/mL)
ORF Nucleotide Sequence:	The ORF insert of this clone is exactly the same as(RC201766).
Restriction Sites:	SgfI-RsrII
Cloning Scheme:	

Cloning sites used for ORF Shuttling:



* The last codon before the Stop codon of the ORF.

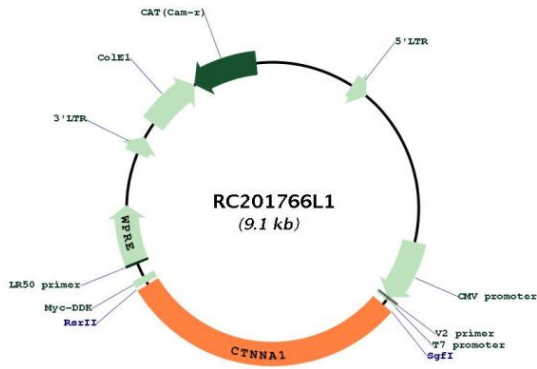
ACCN:	NM_001903
ORF Size:	2718 bp



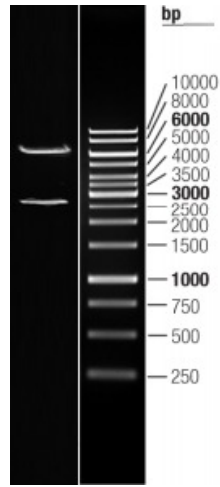
[View online >](#)

OTI Disclaimer:	The molecular sequence of this clone aligns with the gene accession number as a point of reference only. However, individual transcript sequences of the same gene can differ through naturally occurring variations (e.g. polymorphisms), each with its own valid existence. This clone is substantially in agreement with the reference, but a complete review of all prevailing variants is recommended prior to use. More info
OTI Annotation:	This clone was engineered to express the complete ORF with an expression tag. Expression varies depending on the nature of the gene.
Components:	The ORF clone is ion-exchange column purified and shipped in a 2D barcoded Matrix tube containing 10ug of transfection-ready, dried plasmid DNA (reconstitute with 100 ul of water).
Reconstitution Method:	<ol style="list-style-type: none">1. Centrifuge at 5,000xg for 5min.2. Carefully open the tube and add 100ul of sterile water to dissolve the DNA.3. Close the tube and incubate for 10 minutes at room temperature.4. Briefly vortex the tube and then do a quick spin (less than 5000xg) to concentrate the liquid at the bottom.5. Store the suspended plasmid at -20°C. The DNA is stable for at least one year from date of shipping when stored at -20°C.
RefSeq:	NM_001903.2
RefSeq Size:	3791 bp
RefSeq ORF:	2721 bp
Locus ID:	1495
UniProt ID:	P35221
Cytogenetics:	5q31.2
Domains:	Vinculin
Protein Families:	Druggable Genome
Protein Pathways:	Adherens junction, Arrhythmogenic right ventricular cardiomyopathy (ARVC), Endometrial cancer, Leukocyte transendothelial migration, Pathways in cancer, Tight junction
MW:	100.1 kDa
Gene Summary:	This gene encodes a member of the catenin family of proteins that play an important role in cell adhesion process by connecting cadherins located on the plasma membrane to the actin filaments inside the cell. The encoded mechanosensing protein contains three vinculin homology domains and undergoes conformational changes in response to cytoskeletal tension, resulting in the reconfiguration of cadherin-actin filament connections. Certain mutations in this gene cause butterfly-shaped pigment dystrophy. [provided by RefSeq, May 2016]

Product images:



Circular map for RC201766L1



Double digestion of RC201766L1 using SgfI and RsrII