

Product datasheet for RC201765

p21 (CDKN1A) (NM_078467) Human Tagged ORF Clone

Product data:

Product Type: Expression Plasmids
Product Name: p21 (CDKN1A) (NM_078467) Human Tagged ORF Clone
Tag: Myc-DDK
Symbol: p21
Synonyms: CAP20; CDKN1; CIP1; MDA-6; P21; p21CIP1; SDI1; WAF1
Mammalian Cell Selection: Neomycin
Vector: pCMV6-Entry (PS100001)
E. coli Selection: Kanamycin (25 ug/mL)
ORF Nucleotide Sequence: >RC201765 ORF sequence
 Red=Cloning site Blue=ORF Green=Tags(s)

TTTTGTAATACGACTCACTATAGGGCGCCGGGAATTCGTCGACTGGATCCGGTACCGAGGAGATCTGCC
GCC**CGATCGCC**

ATGTCAGAACCGGCTGGGGATGTCGGTCAGAACCCATGCGGCAGCAAGGCCTGCCCGCCTCTTCGGCC
CAGTGGACAGCGAGCAGCTGAGCCGCGACTGTGATGCGCTAATGGCGGGCTGCATCCAGGAGGCCCGTGA
GCGATGGAACCTCGACTTTGTCACCGAGACACCACTGGAGGGTGACTTCGCCTGGGAGCGTGTGCGGGC
CTTGGCCTGCCAAGCTCTACCTCCCACGGGGCCCCGGCAGGGCCGGGATGAGTTGGGAGGAGGCAGGC
GGCCTGGCACCTCACCTGCTCTGCTGCAGGGGACAGCAGAGGAAGACCATGTGGACCTGTCCTGTCTTG
TACCCTTGTGCCTCGCTCAGGGGAGCAGGCTGAAGGGTCCCAGGTGGACCTGGAGACTCTCAGGGTCTGA
AAACGGCGGCAGACCAGCATGACAGATTCTACCACTCCAACGCGGGCTGATCTTCTCCAAGAGGAAGC
C

ACGCGTACGCGGCCGCTCGAGCAGAACTCATCTCAGAAGAGGATCTGGCAGCAAATGATATCCTGGATT
ACAAGGATGACGACGATAAGGTTTAA

Protein Sequence: >RC201765 protein sequence
 Red=Cloning site Green=Tags(s)

MSEPAGDVRQNPCGSKACRRLFGPVDSEQLSRDCDALMAGCIQEARERWNFDFVTETPLEGDFAWERVRG
LGLPKLYLPTGPRRGRDELGGRRPGTSPALLQGTAEEDHVDLSLCTLVPRSGEQAEGSPGGPGDSQGR
KRRQTSMTDFYHSKRRLIFSKRKP

TRTRPLEQKLISEEDLAANDILDYKDDDDKV

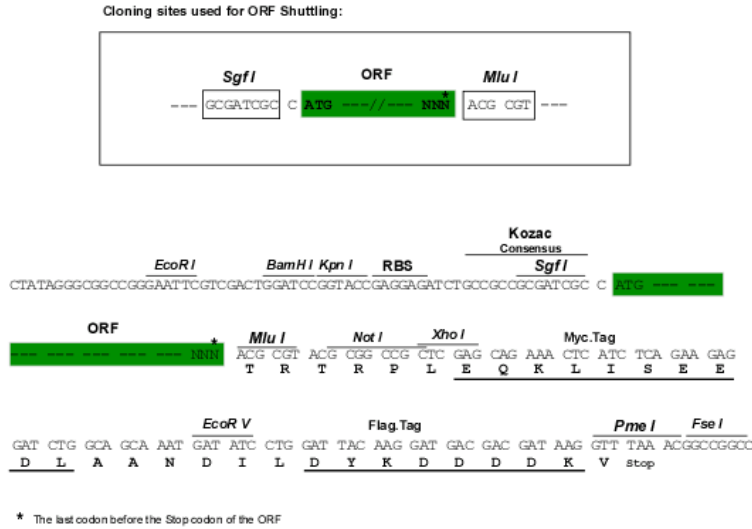
Chromatograms: https://cdn.origene.com/chromatograms/mk6376_c12.zip



[View online »](#)

Restriction Sites: SgfI-MluI

Cloning Scheme:



ACCN: NM_078467

ORF Size: 492 bp

OTI Disclaimer: Due to the inherent nature of this plasmid, standard methods to replicate additional amounts of DNA in E. coli are highly likely to result in mutations and/or rearrangements. Therefore, OriGene does not guarantee the capability to replicate this plasmid DNA. Additional amounts of DNA can be purchased from OriGene with batch-specific, full-sequence verification at a reduced cost. Please contact our customer care team at custsupport@origene.com or by calling 301.340.3188 option 3 for pricing and delivery.

The molecular sequence of this clone aligns with the gene accession number as a point of reference only. However, individual transcript sequences of the same gene can differ through naturally occurring variations (e.g. polymorphisms), each with its own valid existence. This clone is substantially in agreement with the reference, but a complete review of all prevailing variants is recommended prior to use. [More info](#)

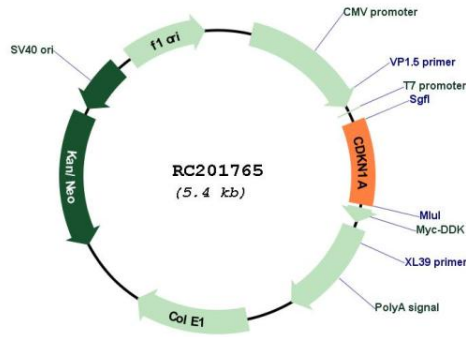
OTI Annotation: This clone was engineered to express the complete ORF with an expression tag. Expression varies depending on the nature of the gene.

Components: The ORF clone is ion-exchange column purified and shipped in a 2D barcoded Matrix tube containing 10ug of transfection-ready, dried plasmid DNA (reconstitute with 100 ul of water).

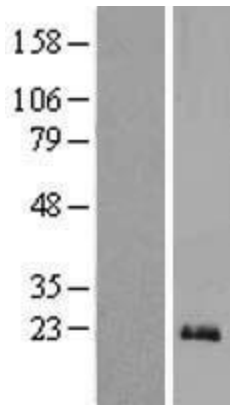
- Reconstitution Method:
1. Centrifuge at 5,000xg for 5min.
 2. Carefully open the tube and add 100ul of sterile water to dissolve the DNA.
 3. Close the tube and incubate for 10 minutes at room temperature.
 4. Briefly vortex the tube and then do a quick spin (less than 5000xg) to concentrate the liquid at the bottom.
 5. Store the suspended plasmid at -20°C. The DNA is stable for at least one year from date of shipping when stored at -20°C.

Note:	Plasmids are not sterile. For experiments where strict sterility is required, filtration with 0.22um filter is required.
RefSeq:	NM_078467.3
RefSeq Size:	2122 bp
RefSeq ORF:	495 bp
Locus ID:	1026
UniProt ID:	P38936
Cytogenetics:	6p21.2
Domains:	CDI
Protein Families:	Druggable Genome
Protein Pathways:	Bladder cancer, Cell cycle, Chronic myeloid leukemia, ErbB signaling pathway, Glioma, Melanoma, p53 signaling pathway, Pathways in cancer, Prostate cancer
MW:	18.1 kDa
Gene Summary:	<p>This gene encodes a potent cyclin-dependent kinase inhibitor. The encoded protein binds to and inhibits the activity of cyclin-cyclin-dependent kinase2 or -cyclin-dependent kinase4 complexes, and thus functions as a regulator of cell cycle progression at G1. The expression of this gene is tightly controlled by the tumor suppressor protein p53, through which this protein mediates the p53-dependent cell cycle G1 phase arrest in response to a variety of stress stimuli. This protein can interact with proliferating cell nuclear antigen, a DNA polymerase accessory factor, and plays a regulatory role in S phase DNA replication and DNA damage repair. This protein was reported to be specifically cleaved by CASP3-like caspases, which thus leads to a dramatic activation of cyclin-dependent kinase2, and may be instrumental in the execution of apoptosis following caspase activation. Mice that lack this gene have the ability to regenerate damaged or missing tissue. Multiple alternatively spliced variants have been found for this gene. [provided by RefSeq, Sep 2015]</p>

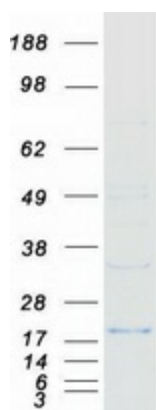
Product images:



Circular map for RC201765



Western blot validation of overexpression lysate (Cat# [LY409213]) using anti-DDK antibody (Cat# [TA50011-100]). Left: Cell lysates from untransfected HEK293T cells; Right: Cell lysates from HEK293T cells transfected with RC201765 using transfection reagent MegaTran 2.0 (Cat# [TT210002]).



Coomassie blue staining of purified CDKN1A protein (Cat# [TP301765]). The protein was produced from HEK293T cells transfected with CDKN1A cDNA clone (Cat# RC201765) using MegaTran 2.0 (Cat# [TT210002]).