

Product datasheet for RC201763

KLF6 (NM_001300) Human Tagged ORF Clone

Product data:

Product Type:	Expression Plasmids
Product Name:	KLF6 (NM_001300) Human Tagged ORF Clone
Tag:	Myc-DDK
Symbol:	KLF6
Synonyms:	BCD1; CBA1; COPEB; CPBP; GBF; PAC1; ST12; ZF9
Mammalian Cell Selection:	Neomycin
Vector:	pCMV6-Entry (PS100001)
E. coli Selection:	Kanamycin (25 ug/mL)
ORF Nucleotide Sequence:	>RC201763 ORF sequence Red=Cloning site Blue=ORF Green=Tags(s)

TTTTGTAATACGACTCACTATAGGGCGGCCGGAATTCGTCGACTGGATCCGGTACCGAGGAGATCTGCC
GCC**CGATCGCC**

ATGGACGTGCTCCCATGTGCAGCATCTCCAGGAGCTCCAGATCGTGCACGAGACCGGCTACTTCTCGG
CGCTGCCGTCTCTGGAGGAGTACTGGCAACAGACCTGCCTAGAGCTGGAACGTTACCTCCAGAGCGAGCC
CTGCTATGTTTCAGCCTCAGAAATCAAATTTGACAGCCAGGAAGATCTGTGGACCAAAATCATTCTGGCT
CGGGAGAAAAAGGAGGAATCCGAACTGAAGATATCTCCAGTCTCCAGAGGACACTCTCATCAGCCGA
GCTTTTGTACAACCTTAGAGACCAACAGCCTGAACTCAGATGTCAGCAGGAATCCTCTGACAGCTCCGA
GAACTTTCTCCACGGCCAAGTTTACCTCCGACCCATTGGCGAAGTTTGGTCAAGCTCGGAAAATTG
AGCTCCTCTGTACCTCCACGCCTCCATCTTCTCCGAACTGAGCAGGGAACCTTCTCAACTGTGGGTT
GCGTGCCCGGGGAGCTGCCCTCGCCAGGGAAGGTGCGCAGCGGGACTTCGGGGAAGCCAGGTGACAAGGG
AAATGGCGATGCCTCCCCGACGGCAGGAGGAGGTGACCGGTGCCACTTTAACGGCTGCAGGAAAAGTT
TACACAAAAGCTCCCACTTGAAGCACACCAGCGGACGCACACAGGAGAAAAGCCTTACAGATGCTCAT
GGGAAGGTGTGAGTGGCGTTTTGCAAGAAGTGATGAGTTAACAGGCACTTCCGAAAGCACACCGGGGC
CAAGCCTTTTAAATGCTCCCACTGTGACAGGTGTTTTTCCAGTCTGACCACCTGGCCCTGCACATGAAG
AGGCACCTC

ACGCGTACGCGGCCGCTCGAGCAGAAACTCATCTCAGAAGAGGATCTGGCAGCAAATGATATCCTGGATT
ACAAGGATGACGACGATAAGGTTTAA



[View online »](#)

Protein Sequence: >RC201763 protein sequence
Red=Cloning site Green=Tags(s)

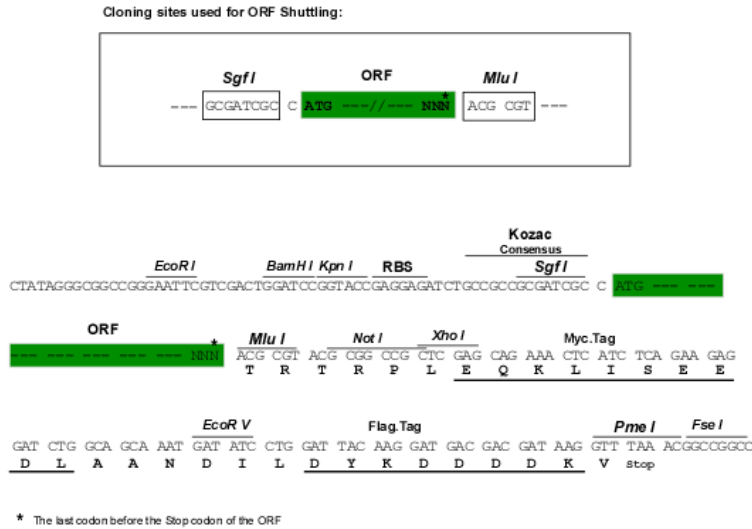
MDVLPMCsIFQELQIVHETGYFSALPSLEEYWQQTCLERLRLQSEPCYVSASEIKFDSQEDLWTKIILA
 REKKEESELKISSPPEDTLISPSFCYNLETNSLNSDVSESSDSSEELSPAKFTSDPIGEVLVSSGKL
 SSSVTSTPPSSPELSREPSQLWGCVPGLPSPGKVRSGTSGKPGDKGNGDASPDGRRRVRHRCFNGCRKV
 YTKSSHLKAHQRTHTGEKPYRCSWEGCEWRFARSDDELTRHFRKHTGAKPFKCSHCDCRF SRSDHLALHMK
 RHL

TRTRPLEQKLISEEDLAANDILDYKDDDDKV

Chromatograms: https://cdn.origene.com/chromatograms/mk6128_c03.zip

Restriction Sites: SgfI-MluI

Cloning Scheme:



ACCN: NM_001300

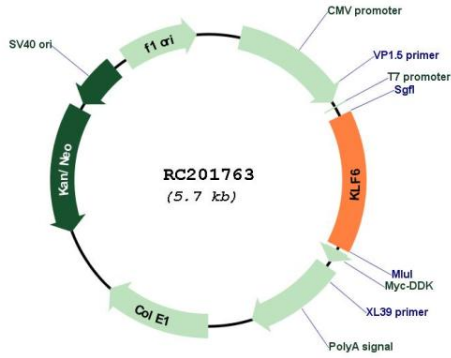
ORF Size: 849 bp

OTI Disclaimer: Due to the inherent nature of this plasmid, standard methods to replicate additional amounts of DNA in E. coli are highly likely to result in mutations and/or rearrangements. Therefore, OriGene does not guarantee the capability to replicate this plasmid DNA. Additional amounts of DNA can be purchased from OriGene with batch-specific, full-sequence verification at a reduced cost. Please contact our customer care team at custsupport@origene.com or by calling 301.340.3188 option 3 for pricing and delivery.

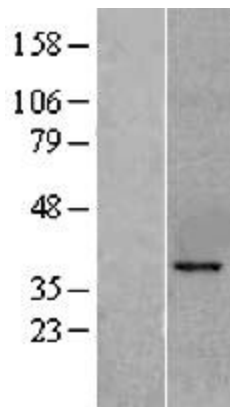
The molecular sequence of this clone aligns with the gene accession number as a point of reference only. However, individual transcript sequences of the same gene can differ through naturally occurring variations (e.g. polymorphisms), each with its own valid existence. This clone is substantially in agreement with the reference, but a complete review of all prevailing variants is recommended prior to use. [More info](#)

OTI Annotation:	This clone was engineered to express the complete ORF with an expression tag. Expression varies depending on the nature of the gene.
Components:	The ORF clone is ion-exchange column purified and shipped in a 2D barcoded Matrix tube containing 10ug of transfection-ready, dried plasmid DNA (reconstitute with 100 ul of water).
Reconstitution Method:	<ol style="list-style-type: none">1. Centrifuge at 5,000xg for 5min.2. Carefully open the tube and add 100ul of sterile water to dissolve the DNA.3. Close the tube and incubate for 10 minutes at room temperature.4. Briefly vortex the tube and then do a quick spin (less than 5000xg) to concentrate the liquid at the bottom.5. Store the suspended plasmid at -20°C. The DNA is stable for at least one year from date of shipping when stored at -20°C.
RefSeq:	<u>NM_001300.6</u>
RefSeq Size:	4679 bp
RefSeq ORF:	852 bp
Locus ID:	1316
UniProt ID:	<u>Q99612</u>
Cytogenetics:	10p15.2
Domains:	zf-C2H2
Protein Families:	Druggable Genome, ES Cell Differentiation/IPS, Transcription Factors
MW:	31.9 kDa
Gene Summary:	This gene encodes a member of the Kruppel-like family of transcription factors. The zinc finger protein is a transcriptional activator, and functions as a tumor suppressor. Multiple transcript variants encoding different isoforms have been found for this gene, some of which are implicated in carcinogenesis. [provided by RefSeq, May 2009]

Product images:



Circular map for RC201763



Western blot validation of overexpression lysate (Cat# [LY400520]) using anti-DDK antibody (Cat# [TA50011-100]). Left: Cell lysates from untransfected HEK293T cells; Right: Cell lysates from HEK293T cells transfected with RC201763 using transfection reagent MegaTran 2.0 (Cat# [TT210002]).