

Product datasheet for RC201750

TBPL1 (NM_004865) Human Tagged ORF Clone

Product data:

Product Type: Expression Plasmids
Product Name: TBPL1 (NM_004865) Human Tagged ORF Clone
Tag: Myc-DDK
Symbol: TBPL1
Synonyms: MGC:8389; MGC:9620; STUD; TLF; TLP; TRF2
Mammalian Cell Selection: Neomycin
Vector: pCMV6-Entry (PS100001)
E. coli Selection: Kanamycin (25 ug/mL)
ORF Nucleotide Sequence: >RC201750 ORF sequence
 Red=Cloning site Blue=ORF Green=Tags(s)

TTTTGTAATACGACTCACTATAGGGCGCCGGGAATTCGTCGACTGGATCCGGTACCGAGGAGATCTGCC
 GCC**CGATCGCC**

ATGGATGCAGACAGTGATGTTGCATTGGACATTCTAATTACAAATGTAGTCTGTGTTTTAGAACAAGAT
 GTCATTTAAACTAAGGAAGATTGCTTTGGAAGGAGCAAATGTAATTTATAAACGTGATGCTGGAAAAGT
 ATTAATGAAGCTTAGAAAACCTAGAATTACAGCTACAATTTGGTCCTCAGGAAAAATTATTTGCACTGGA
 GCAACAAGTGAAGAAGAAGCTAAATTTGGTGCCAGACGCTTAGCCCGTAGTCTGCAGAACTAGGTTTTCT
 AGGTAATATTTACAGATTTTAAGGTTGTTAACGTTCTGGCAGTGTGAACATGCCATTTGAAATCCGTTT
 GCCAGAATTCACAAAGAACAATAGACCTCATGCCAGTTACGAACCTGAATTCATCCTGCTGTGTGCTAT
 CCGATAAAATCTCTAAGAGCTACATTACAGATTTTTTCAACAGGAAGTATCACAGTAACAGGGCCCAATG
 TAAAGGCTGTTGCTACTGCTGTGGAACAGATTTACCCATTTGTGTTTGAAGCAGGAAAGAAATTTTA

ACGCGTACGCGGCCGCTCGAGCAGAACTCATCTCAGAAGAGGATCTGGCAGCAAATGATATCCTGGATT
 ACAAGGATGACGACGATAAGGTTTAA

Protein Sequence: >RC201750 protein sequence
 Red=Cloning site Green=Tags(s)

MDADSDVALDILITNVVCFVFRTRCHLNLRKIALEGANVIYKRDAGKVLMLRKPRIATIWSSGKIICTG
 ATSEEEAKFGARRLARSQKLGQVIFTFDFKVVNVLAVCNMPFEIRLPEFTKNRPHASYEPHELHPAVCY
 RIKSLRATLQIFSTGSITVTGPNVKAVATAVEQIYPFVFESRKEIL

TRTRPLEQKLISEEDLAANDILDYKDDDDKV

Chromatograms: https://cdn.origene.com/chromatograms/mk6092_h04.zip



Restriction Sites: SgfI-MluI

Cloning Scheme:



ACCN: NM_004865

ORF Size: 558 bp

OTI Disclaimer: The molecular sequence of this clone aligns with the gene accession number as a point of reference only. However, individual transcript sequences of the same gene can differ through naturally occurring variations (e.g. polymorphisms), each with its own valid existence. This clone is substantially in agreement with the reference, but a complete review of all prevailing variants is recommended prior to use. [More info](#)

OTI Annotation: This clone was engineered to express the complete ORF with an expression tag. Expression varies depending on the nature of the gene.

Components: The ORF clone is ion-exchange column purified and shipped in a 2D barcoded Matrix tube containing 10ug of transfection-ready, dried plasmid DNA (reconstitute with 100 ul of water).

Reconstitution Method:

1. Centrifuge at 5,000xg for 5min.
2. Carefully open the tube and add 100ul of sterile water to dissolve the DNA.
3. Close the tube and incubate for 10 minutes at room temperature.
4. Briefly vortex the tube and then do a quick spin (less than 5000xg) to concentrate the liquid at the bottom.
5. Store the suspended plasmid at -20°C. The DNA is stable for at least one year from date of shipping when stored at -20°C.

RefSeq: [NM_004865.4](#)

RefSeq Size: 1337 bp

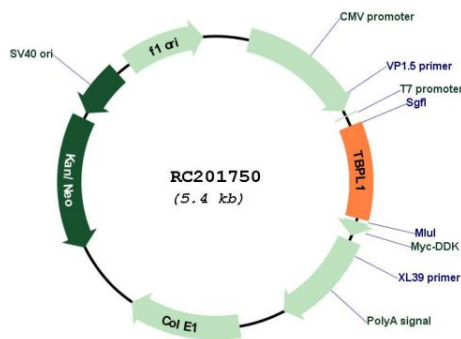
RefSeq ORF: 561 bp

Locus ID: 9519

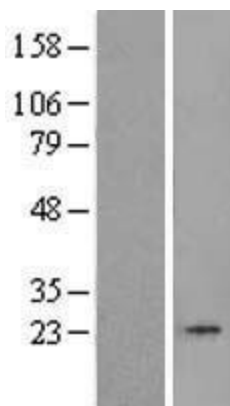
UniProt ID: [P62380](#)

Cytogenetics:	6q23.2
Domains:	TBP
Protein Families:	Transcription Factors
Protein Pathways:	Basal transcription factors, Huntington's disease
MW:	20.9 kDa
Gene Summary:	This gene encodes a member of the TATA box-binding protein family. TATA box-binding proteins play a critical role in transcription by RNA polymerase II as components of the transcription factor IID (TFIID) complex. The encoded protein does not bind to the TATA box and initiates transcription from TATA-less promoters. This gene plays a critical role in spermatogenesis, and single nucleotide polymorphisms in this gene may be associated with male infertility. Alternatively spliced transcript variants have been observed for this gene, and a pseudogene of this gene is located on the long arm of chromosome 3. [provided by RefSeq, Nov 2011]

Product images:



Circular map for RC201750



Western blot validation of overexpression lysate (Cat# [LY417665]) using anti-DDK antibody (Cat# [TA50011-100]). Left: Cell lysates from untransfected HEK293T cells; Right: Cell lysates from HEK293T cells transfected with RC201750 using transfection reagent MegaTran 2.0 (Cat# [TT210002]).