

## Product datasheet for **RC201749**

### RRP1 like protein (RRP1) (NM\_003683) Human Tagged ORF Clone

#### Product data:

Product Type:	Expression Plasmids
Product Name:	RRP1 like protein (RRP1) (NM_003683) Human Tagged ORF Clone
Tag:	Myc-DDK
Symbol:	RRP1 like protein
Synonyms:	D21S2056E; NNP-1; NOP52; RRP1A
Mammalian Cell Selection:	Neomycin
Vector:	pCMV6-Entry (PS100001)
E. coli Selection:	Kanamycin (25 ug/mL)



[View online »](#)

**ORF Nucleotide Sequence:**

>RC201749 ORF sequence  
 Red=Cloning site Blue=ORF Green=Tags(s)

TTTTGTAATACGACTCACTATAGGGCGGCCGGAATTCGTCGACTGGATCCGGTACCGAGGAGATCTGCC  
 GCC**CGCATCGCC**

ATGGTTTCGCGCTGACGCTCCCGCTGAGATCCAGCTGGCTCAGCGCCTGGCGGGAATGAGCAGGTGA  
 CCCGGGACCGGGCGGTGAGGAAGCTCCGAAATACATCGTCGCCAGGACTCAGCGGGCCGAGGTGGTTT  
 TACGCACGACGAGCTGCTGAAGGTGTTGAAAGGACTGTTTTATTGCATGTGGATGCAGGACAAGCCACTC  
 CTCAGGAAGAATTAGGAAGGACTATTTCCAGCTCGTTCATGCTTTTCAGACCAGGAGGCGCAGCACC  
 TGTTCTTCAGGCCTTCTGGCAGACCATGAATCGCGAGTGGACGGCATTGACAGGCTGCGCCTGGATAA  
 ATTCTACATGCTCATGCGGATGGTCTGAACGAGTCTTGAAGTTCTGAAGATGCAAGGCTGGGAAGAA  
 AGACAGATCGAGGAGCTGCTAGAGCTGCTGATGACTGAGATCCTGCACCCAGCAGCCAGGCCCAACG  
 GTGTGAAGAGCCACTTCATCGAGATCTTCTGGAGGAGCTGACCAAAGTGGCGCCGAGGAGCTTACGGC  
 AGACCAGAACCTGAAGTTCATCGACCCCTTCTGCAGAATCGCTGCCCGGACCAAGGATTCCTTGGTTTTG  
 AACAACTCACTCGAGGCATCTTTGAGACGATTGTGGAGCAGGCCCGCTTGCCATTGAAGACCTCCTGA  
 ATGAACTGGACACACAGGATGAGGAGGTGGCGTCGGACAGTGATGAGTCCTCTGAGGGTGGTGAGCGTGG  
 AGACGCGCTGTCCAGAAGAGGTCTGAGAAGCCGCCCGCAGGCTCCATCTGCAGGGCTGAACCTGAGGCT  
 GGTGAGGAGCAGGCAGGTGACGACAGGGACAGTGGCGGCCCGTCTCCAGTTTGACTACGAGGCAGTTG  
 CTAACAGACTGTTTGAATGGCCAGCCGACAGCAGCCCTTCTCAGAACAGAAAGCGTCTCTACAAAGT  
 GATCCGGAAGCTGAGGACCTGGCAGGAGGCATTTCCCTGAAGATGAGATCCCAGAGAAGGCTGCAGG  
 CGCCTGCTTGAAGGGAGGCGGCAGAAGAAGCAGAAGCAGAAGCGTCTGCTCAGTTGACAGCAGGAGA  
 GAGGGAAGGTGAGAAGGAGCCCGGAGCCGGGCATGGAGAGGAAGAGGAGCAGGAGGAGGTTGTAGG  
 GGCCGACCCCGAGGCGCGGGCAGAGGCTGGTGAAGCAGCCAGGCACAGCTGAGCGGGCCCTGCTCCGAGAT  
 CAGCCCAGGGGCGTGGCCAGAGAGGGGCTCGCCAGAGAAGGAGGACACCTCGGCCCTGACCAAGTGGCC  
 GAGCAAAGGCGCCAATGTCCAGGAGCCGAGAAGAAGAAGAACGCAGGGAG

**ACGCGT**ACGCGGCCGCTCGAGCAGAACTCATCTCAGAAGAGGATCTGGCAGCAAATGATATCCTGGATT  
 ACAAGGATGACGACGATAAGGTTTAA

**Protein Sequence:**

>RC201749 protein sequence  
 Red=Cloning site Green=Tags(s)

MYSRVQLPPEIQLAQRLAGNEQVTRDRAVRKLRKYIVARTQRAAGGFTHDELLKVKGLFYCMMWQDKPL  
 LQEELGRTISQLVHAFQTTEAQLFLQAFWQTMNREWTGIDRLRLDKFYMLMRMVLNESLKVLMQGWEE  
 RQIEELLELLMTEILHPSSQAPNGVKSHFIEIFLEELTKVGAELTADQNLKFIIDPFRIAARTKDSLVL  
 NNITRGIFETIVEQAPLAIEDLLNELDTQDEEVASDSDESSEGGGERDALSQKRSEKPPAGSICRAEPEA  
 GEEQAGDDRDSGGPVLQFDYEAVANRLFEMASRQSTPSQNRKRLYKVIKRLQDLAGGIFPEDEIPEKACR  
 RLLEGRRQKTKKQKRLRLQQERKGKEPEPPSPGMRKRSRRRGVADPEARAEAGEQPGTAERALLRD  
 QPRGRGQRGARQRRRTPRPLTSARAKAANVQEPEKKKRRE

**TR**TRPLEQKLISEEDLAANDILDYKDDDDKV

**Chromatograms:**

[https://cdn.origene.com/chromatograms/mk6376\\_a02.zip](https://cdn.origene.com/chromatograms/mk6376_a02.zip)

**Restriction Sites:**

Sgfl-Mlul

**Cloning Scheme:**


**ACCN:** NM\_003683

**ORF Size:** 1383 bp

**OTI Disclaimer:** The molecular sequence of this clone aligns with the gene accession number as a point of reference only. However, individual transcript sequences of the same gene can differ through naturally occurring variations (e.g. polymorphisms), each with its own valid existence. This clone is substantially in agreement with the reference, but a complete review of all prevailing variants is recommended prior to use. [More info](#)

**OTI Annotation:** This clone was engineered to express the complete ORF with an expression tag. Expression varies depending on the nature of the gene.

**Components:** The ORF clone is ion-exchange column purified and shipped in a 2D barcoded Matrix tube containing 10ug of transfection-ready, dried plasmid DNA (reconstitute with 100 ul of water).

**Reconstitution Method:**

1. Centrifuge at 5,000xg for 5min.
2. Carefully open the tube and add 100ul of sterile water to dissolve the DNA.
3. Close the tube and incubate for 10 minutes at room temperature.
4. Briefly vortex the tube and then do a quick spin (less than 5000xg) to concentrate the liquid at the bottom.
5. Store the suspended plasmid at -20°C. The DNA is stable for at least one year from date of shipping when stored at -20°C.

**RefSeq:** [NM\\_003683.3](#)

**RefSeq Size:** 1820 bp

**RefSeq ORF:** 1386 bp

**Locus ID:** 8568

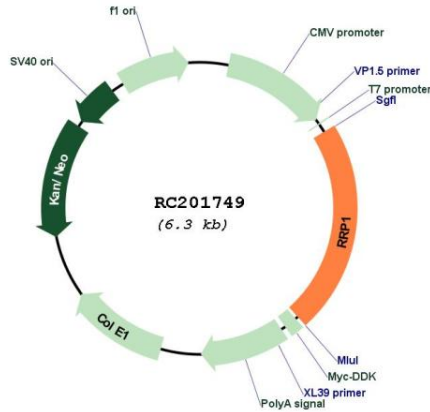
**UniProt ID:** [P56182](#)

**Cytogenetics:** 21q22.3

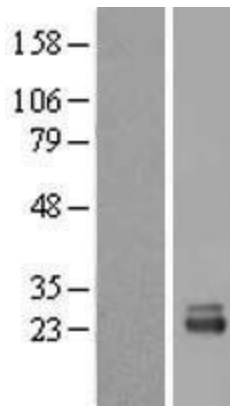
**MW:** 52.8 kDa

**Gene Summary:** The protein encoded by this gene is the putative homolog of the yeast ribosomal RNA processing protein RRP1. The encoded protein is involved in the late stages of nucleogenesis at the end of mitosis, and may be required for the generation of 28S rRNA. [provided by RefSeq, Jul 2008]

**Product images:**



Circular map for RC201749



Western blot validation of overexpression lysate (Cat# [LY418501]) using anti-DDK antibody (Cat# [TA50011-100]). Left: Cell lysates from untransfected HEK293T cells; Right: Cell lysates from HEK293T cells transfected with RC201749 using transfection reagent MegaTran 2.0 (Cat# [TT210002]).