

Product datasheet for **RC201744**

Chromogranin B (CHGB) (NM_001819) Human Tagged ORF Clone

Product data:

Product Type:	Expression Plasmids
Product Name:	Chromogranin B (CHGB) (NM_001819) Human Tagged ORF Clone
Tag:	Myc-DDK
Symbol:	Chromogranin B
Synonyms:	SCG1
Mammalian Cell Selection:	Neomycin
Vector:	pCMV6-Entry (PS100001)
E. coli Selection:	Kanamycin (25 ug/mL)



[View online »](#)

ORF Nucleotide Sequence:

>RC201744 ORF sequence
 Red=Cloning site Blue=ORF Green=Tags(s)

TTTTGTAATACGACTCACTATAGGGCGGCCGGAATTCGTGACTGGATCCGGTACCGAGGAGATCTGCC
 GCC**CGCATCGCC**

ATGCAGCCAACGCTGCTTCTCAGCCTCCTGGGAGCCGTGGGGCTGGCGGTGTCAATTCATGCCAGTGG
 ATAACAGGAACCAATGAAGGAATGGTACTCGCTGCATCATTGAGGTCTCTCAAATGCCTTGTGAA
 GTCCAGCGCTCCACCCATCACCCCTGAGTGCCGCAAGTCTGAAGACGAGTAGAAAAAGCGTCAAAGAC
 AAAGAGACAACACTGAAAATGAAAACACAAAGTTTGAAGTAAGATTGTTAAGAGACCCAGCTGATGCCTCGG
 AAGCCCACGAGTCTCCAGCAGGGGAGAGGCAGGAGCCCCAGGGGAGGAGGACATCCAAGGCCAACAAA
 GGCAGACACAGAGAAATGGGCAGAGGGAGGCGGGCACAGCCGAGAGCGAGCGGATGAGCCCCAGTGGAGC
 CTCTATCCCTCCGACAGCAAGTCTCTGAAGAAGTGAAGACACGCCATTCTGAGAAGAGCCAGAGAGAGG
 ATGAGGAGGAGGAGGAGGAGAGAACTATCAAAAAGGGGAGCGAGGGGAAGATAGCAGTGAAGAGAAA
 CCTTGAAGAGCCAGGAGAGACACAAAACGCTTTTCTCAATGAAAGAAAGCAGGCTTCAGCTATAAAAAA
 GAGGAGTTAGTGCCAGATCGGAAACACATGCTGCCGGGCAATTCAGGAGAAGACACATAGCCGAGAGA
 AGAGTAGCCAGGAGAGTGGAGAGGAGGCAGGGAGCCAGGAGAATCACCCAGGAGTCTAAAGGCCAACCC
 CCGAAGCCAGGAAGAATCTGAGGAAGGTGAGGAAGATGCCACCTCTGAGGTGGACAAACGACGCACGAGG
 CCCAGACACCACCAGGGAGGAGCAGGCCCGACAGGCTCTCAAGGAGGGAGTCTTCCCTCTGAGGAAA
 AGGGACACCCCAAGGAGGAATCTGAGGAGTCAAACGTGAGCATGGCCAGTTTAGGGGAAAAGAGGGACCA
 CCATTAACCCACTACAGGGCTTCAAGGAAGAAGCTGAATATGGAGAAGAAATAAAGGGTTATCCAGGC
 GTCCAGGCCCTGAGGACCTGGAGTGGGAGCGCTATAGGGGCAGAGGAAGTGAAGAATACAGGGCTCCAA
 GACCTCAGAGTGAGGAGAGTTGGGATGAGGAGGACAAGAGAAACTACCCAGCTTAGAGCTTGATAAGAT
 GGCACATGGATATGGTGAAGAAAGTGAAGAAAGAGAGGGGCTTGAGCCGGGAAAGGGACGCCATCACAGA
 GGCAGGGGAGGGGAGCCACGTGCCTATTTTCATGTCTGACACCAGAGAAGAGAAAAGTTCTTGGGTGAAG
 GACACCACCGTGTCCAAGAAAACAGATGGACAAGGCAAGGAGGCATCCACAAGGTGCGTGGAAAGAGCT
 GGACAGAAATTATCTCAACTACGGTGAGGAAGGAGCCCCAGGGAAGTGGCAGCAGCAGGGAGACCTGCAG
 GACACTAAAGAAAACAGGGAGGAAGCTAGGTTTCAAGATAAACAATATAGCTCCCATCACACAGCTGAAA
 AGAGGAAGAGATTAGGGGAAGTTCACCCATACTACGACCCTCTCCAGTGAAGAGCAGCCATTTTGA
 AAGAAGAGACAACATGAATGACAATTTTCTCGAGGGTGAAGGAGAAAATGAGCTGACCTTGAACGAGAAG
 AATTTCTTCCAGAACTAATACTATGACTGGTGGGAGAAAAGCCCTTCTCTGAGGATGTGAAGTGGGGT
 ATGAGAAGAGAAAACCTCGCCAGGGTCCCCAAGCTGGACCTGAAAAGGCAATATGACAGGGTGGCCCACT
 GGACCAGCTCCTTCACTACAGGAAGAAGTCAGCTGAGTTTCCAGACTTCTATGATTCTGAGGAGCCGGTG
 AGCACCACCAGGAGGCAGAAAATGAAAAGGACAGGGCTGACCAGACAGTCTGACAGAGGACGAGAAAA
 AAGAACTCGAAAACCTGGCTGCAATGGATTTGAACTACAGAAGATAGCTGAGAAATTCAGCCAAAGGGG
 C

ACGCGTACGCGGCCGCTCGAGCAGAACTCATCTCAGAAGAGGATCTGGCAGCAATGATATCCTGGATT
 ACAAGGATGACGACGATAAGGTTTAA

Protein Sequence: >RC201744 protein sequence
 Red=Cloning site Green=Tags(s)

MQPTLLLSLLGAVGLAAVNSMPVDNRNHNEGMVTRCIIIEVLSNALSKSSAPPITPECRQVLKTSRKDVKD
 KETTENENTKFEVRLLRDPADASEAHESSSRGEAGAPGEEDIQGPTKADTEKWAEGGGHSRERADEPQWS
 LYPDSQVSEEVKTRHSEKSRQREDEEEEGENYQKGERGEDSSEEKHLLEPGETQNAFLNERKQASAIKK
 EELVARSETHAAGHSQEKTHSREKSSQESGEEAGSQENHPQESKGQPRSQEESEEGEEDATSEVDKRRTR
 PRHHHGRSRPDRSSQGGSLPSEEKGHPQEESESNVSMASLGEKRDHSTHYRASEEEPEYGEIIGYPG
 VQAPEDLEWERYRGRGSEERYAPRPQSEESWDEEDKRNYPSELELDKMAHGEGESEEERGLEPGKGRHHR
 GRGGEPRAYFMSDTREEKRFLGEGHHRVQENQMDKARRHPQGAWKELDRNYLNYGEEGAPGKQQQDLQ
 DTKENREEARFQDKQYSSHHTAEKRKRLGELFNPYYDPLQWSSHFERRDNMNDNLEGEENELTLNEK
 NFFPEYNDWWEKKPFSEVDNNGYEKRNLARVPKLDLKRQYDRVAQLDQLLHYRKKSAEFPDFYDSEEPV
 STHQEAENEKDRADQTVL TEDEKKELENLAAMDLELQKIAEKFSQRG

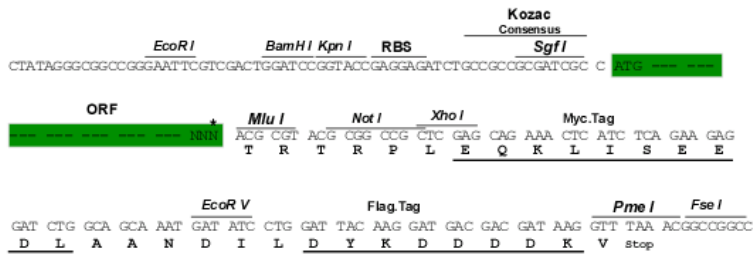
TRTRPLEQKLISEEDLAANDILDYKDDDDKV

Chromatograms: https://cdn.origene.com/chromatograms/mk6711_e03.zip

Restriction Sites: Sgfl-MluI

Cloning Scheme:

Cloning sites used for ORF Shuttling:



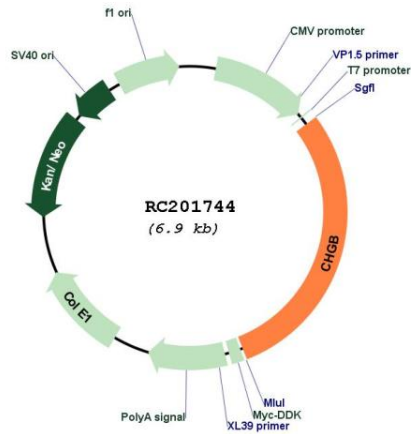
* The last codon before the Stop codon of the ORF

ACCN: NM_001819

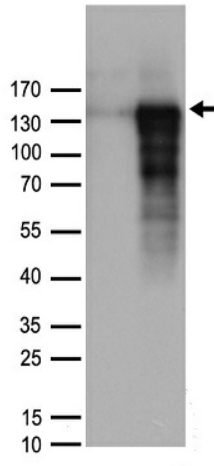
ORF Size: 2031 bp

OTI Disclaimer:	<p>Due to the inherent nature of this plasmid, standard methods to replicate additional amounts of DNA in E. coli are highly likely to result in mutations and/or rearrangements. Therefore, OriGene does not guarantee the capability to replicate this plasmid DNA. Additional amounts of DNA can be purchased from OriGene with batch-specific, full-sequence verification at a reduced cost. Please contact our customer care team at custsupport@origene.com or by calling 301.340.3188 option 3 for pricing and delivery.</p> <p>The molecular sequence of this clone aligns with the gene accession number as a point of reference only. However, individual transcript sequences of the same gene can differ through naturally occurring variations (e.g. polymorphisms), each with its own valid existence. This clone is substantially in agreement with the reference, but a complete review of all prevailing variants is recommended prior to use. More info</p>
OTI Annotation:	This clone was engineered to express the complete ORF with an expression tag. Expression varies depending on the nature of the gene.
Components:	The ORF clone is ion-exchange column purified and shipped in a 2D barcoded Matrix tube containing 10ug of transfection-ready, dried plasmid DNA (reconstitute with 100 ul of water).
Reconstitution Method:	<ol style="list-style-type: none"> 1. Centrifuge at 5,000xg for 5min. 2. Carefully open the tube and add 100ul of sterile water to dissolve the DNA. 3. Close the tube and incubate for 10 minutes at room temperature. 4. Briefly vortex the tube and then do a quick spin (less than 5000xg) to concentrate the liquid at the bottom. 5. Store the suspended plasmid at -20°C. The DNA is stable for at least one year from date of shipping when stored at -20°C.
RefSeq:	NM_001819.1 , NP_001810.1
RefSeq Size:	2666 bp
RefSeq ORF:	2034 bp
Locus ID:	1114
UniProt ID:	P05060
Cytogenetics:	20p12.3
Domains:	Granin
Protein Families:	Secreted Protein
MW:	78.2 kDa
Gene Summary:	This gene encodes a tyrosine-sulfated secretory protein abundant in peptidergic endocrine cells and neurons. This protein may serve as a precursor for regulatory peptides. [provided by RefSeq, Jan 2009]

Product images:



Circular map for RC201744



HEK293T cells were transfected with the pCMV6-ENTRY control (Cat# [PS100001], Left lane) or pCMV6-ENTRY CHGB (Cat# RC201744, Right lane) cDNA for 48 hrs and lysed. Equivalent amounts of cell lysates (5 ug per lane) were separated by SDS-PAGE and immunoblotted with anti-CHGB rabbit polyclonal antibody (Cat# [TA890067]).