

Product datasheet for **RC201739**

RBM14 (NM_006328) Human Tagged ORF Clone

Product data:

Product Type:	Expression Plasmids
Product Name:	RBM14 (NM_006328) Human Tagged ORF Clone
Tag:	Myc-DDK
Symbol:	RBM14
Synonyms:	COAA; PSP2; SIP; SYTIP1; TMEM137
Mammalian Cell Selection:	Neomycin
Vector:	pCMV6-Entry (PS100001)
E. coli Selection:	Kanamycin (25 ug/mL)



[View online »](#)

ORF Nucleotide
Sequence:

>RC201739 ORF sequence
Red=Cloning site Blue=ORF Green=Tags(s)

TTTTGTAATACGACTCACTATAGGGCGGCCGGAATTCGTCGACTGGATCCGGTACCGAGGAGATCTGCC
GCC**CGGATCGCC**

ATGAAGATATTCGTGGCAACGTCGACGGGGCGGATACGACTCCGGAGGAGCTGGCAGCCCTCTTTGCGC
CCTACGGCACGGTCATGAGCTGCGCCGTATGAAACAGTTCGCCTTCGTGCACATGCGCGAGAACGCGGG
CGCGCTGCGCGCCATCGAAGCCCTGCACGGCCACGAGCTGCGGCCGGGGCGCGCTCGTGGTGGAGATG
TCGCGCCCAAGGCCTCTTAATACTTGAAGATTTTCGTGGCAATGTGTGGCTGCATGCACGAGCCAGG
AACTGCGCAGCCTCTTCGAGCGCCGCGGACGCGTCATCGAGTGTGACGTGGTAAAGACTACGCGTTTGT
TCACATGGAGAAGGAAGCAGATGCCAAAGCCGCAATCGCGCAGCTCAACGGCAAAGAAGTGAAGGGCAAG
CGCATCAACGTGGAAGCTCCACCAAGGGTCAGAAGAAGGGCCCTGGCCTGGCTGTCCAGTCTGGGGACA
AGACCAAGAAACCAGGGCTGGGGATACGGCCTCCCTGGAAGTGGTGGCTTCTCTGCCACCTTCGACTA
CCAGCAGGCTTTTGGCAACAGCACTGGTGGCTTTGATGGCAAGCCCGTCAGCCACACCACCTCTTTT
GGTCGCGACCGCAGCCCTCTGCGCCGTTCACTCCCGAGCCTCTTATGTGGCTCCTCTGACGGCCAGC
CAGCTACCTACCGGGCCAGCCGTCCGTGTCACTGGGAGCTGCCTACAGGGCCAGCCTTCTGCCTCTTT
GGGTGTTGGCTATCGGACTCAGCCCATGACAGCCAGGCAGCCTTTACCAGCCTCAGCCCTGTCTCC
CTTGGGGCACCATACAGGGGCCAGCTGGCTAGTCTAGCTCCAGTCTGTGTCAGCTTCTTCACTCGGCC
CATATGGTGGAGCCAGCCCTCAGCCTCGGCCCTTCTCCTATGGGGGTGAGGCAGCTGCAGCTTCTTC
GCTCAACTCCTATGGGGCTCAGGGTTCCTCCCTTGCCCTCCTATGGTAACCCAGCCATCCTCTTACGGCGCC
CAGGCTGCCTCTCCTATGGGGTTCGTGACGTGCTTCTTCTACAACACCCAGGGAGCAGCTTCTCCTCT
TAGGCTCCTACGGGGCTCAGGCAGCCTCCTATGGGGCCAGTCTGCAGCCTCCTCACTAGCTTATGGGAGC
CCAGGCAGCTTCATATAATGCCAGCCCTCGGCCCTTACAATGCCAGTCTGCCCATATGCTGCACAG
CAGGCTGCTTCTACTCTTCCCAACCTGCTGCCTATGTGGCACAGCCAGCCACAGCTGCTGCCTATGCCA
GCCAGCCAGCAGCCTACGCCGACAAGCCACTACCCCAATGGCTGGCTCCTATGGGGCCAGCCGTTGT
GCAGACCCAGCTGAATAGTTACGGGGCCCAAGCATCAATGGGCCTTTCAGGCTCCTATGGGGCTCAGTCG
GCTGCTGCGGCCACTGGCTCCTATGGTGGCGCAGCAGCCTACGGGGCCCAACCTTCTGCCACCCTGGCAG
CTCCTTACCGCACTCAGTCATCAGCCTCATTGGCTGCTTCTCCTATGCTGCCAGCAGCATCCCAGGCTGC
TGCTCCTACCGCGCCAGCCAGGCAATGCCTACGATGGGGCAGGTGAGCCGTCTGCAGCCTACCTGTCC
ATGTCCCAGGGGGCCGTTGCCAACGCCAACAGCACCCCGCCGCTATGAGCGTACCCGCTCTCCCCAC
CCGGGGCAGCTACGACGATCCCTACAAAAGGCTGTGCGCATGTGCGAAAAGGTATGGTTCCGACCGCGG
TTAGCCGAGCTCTCTGATTACCGCCGTTTATCAGAGTCGCAGCTTTCGTTCCGCGCTCGCCGACAAAG
TCCTCGCTGGATTACCGTCGCTGCCGATGCCATTCCGATTACGCACGCTATTCGGGCTCCTATAATG
ATTACCTCGGGCGGCTCAGATGCACTCTGGCTACCAGCGCCGCATG

AG**CGGACCG**ACGCGTACGCGCCGCTCGAGCAGAACTCATCTCAGAAGAGGATCTGGCAGCAAATGATATCC
TGGATTACAAGGATGACGACGATAAGGTTTAA

Protein Sequence: >RC201739 protein sequence
Red=Cloning site Green=Tags(s)

```

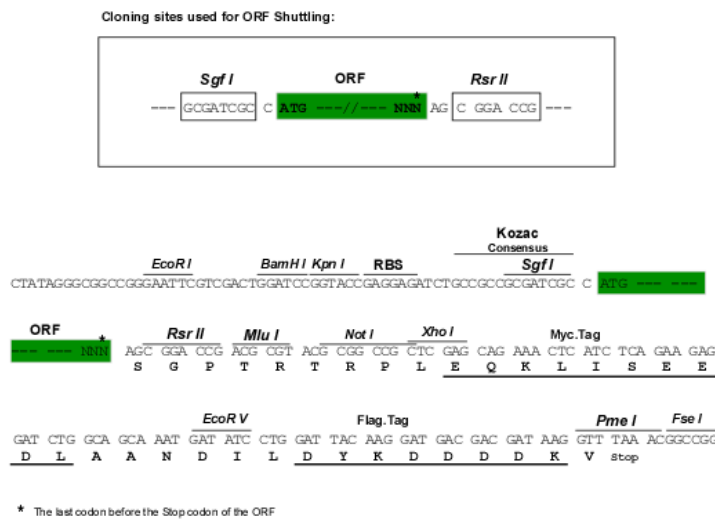
MKIFVGNVDGADTTPEELAAFLAPYGTVMSCAVMKQFAFVHMRENAGALRAIEALHGHELPRGRALVVEM
SRPRPLNTWKIFVGNVSAACTSQELRSLFERRGRVIECDVVKDYAFVHMEKEADAKAAIAQLNGKEVKGK
RINVELSTKGQKKGPLAVQSGDKTKKPGAGDTAFPGTGGFSATFDYQQAFGNSTGGFDGQARQPTPPFF
GRDRSPLRRSPPRASVYAPLTAQPATYRAQPSVSLGAAAYRAQPSASLGVGYRTQPMTAQAASYRAQPSVS
LGAPYRGLASPSQSAASSLGPYGGAQPSASALSSYGGQAAAASSLNSYGAQGSLLASYGNQPSYGA
QAASSYGVRAAASSYNTQGAASSLGSYGAQAASYGAQSAASSLAYGAQAASYNAPASYNAPYAAQ
QAASYSSQPAAYVAQPATAAAYASQPAAYAAQATTPMAGSYGAQPVVQTQLNSYGAQASMGSLGSYGAQS
AAAATGSYGAAAAYGAQPSATLAAPYRTQSSASLAASYAAQHPQAAAASYRGQPGNAYDGAGQPSAAAYLS
MSQGAVANANSTPPPYERTRLSPPRASVDDPYKAVAMSKRYGSDRRLAELSDYRRLSESQLSFRRSPTK
SSLDYRRLPDAHSDYARYSGSYNDYLRAAQMHSGYQRRM
    
```

SGPTRTRPLEQKLISEEDLAANDILDYKDDDDKV

Chromatograms: https://cdn.origene.com/chromatograms/mk6623_d10.zip

Restriction Sites: SgfI-RsrII

Cloning Scheme:



ACCN: NM_006328

ORF Size: 2007 bp

OTI Disclaimer: The molecular sequence of this clone aligns with the gene accession number as a point of reference only. However, individual transcript sequences of the same gene can differ through naturally occurring variations (e.g. polymorphisms), each with its own valid existence. This clone is substantially in agreement with the reference, but a complete review of all prevailing variants is recommended prior to use. [More info](#)

OTI Annotation: This clone was engineered to express the complete ORF with an expression tag. Expression varies depending on the nature of the gene.

Components: The ORF clone is ion-exchange column purified and shipped in a 2D barcoded Matrix tube containing 10ug of transfection-ready, dried plasmid DNA (reconstitute with 100 ul of water).

Reconstitution Method:

1. Centrifuge at 5,000xg for 5min.
2. Carefully open the tube and add 100ul of sterile water to dissolve the DNA.
3. Close the tube and incubate for 10 minutes at room temperature.
4. Briefly vortex the tube and then do a quick spin (less than 5000xg) to concentrate the liquid at the bottom.
5. Store the suspended plasmid at -20°C. The DNA is stable for at least one year from date of shipping when stored at -20°C.

RefSeq: [NM_006328.4](#)

RefSeq Size: 5415 bp

RefSeq ORF: 2010 bp

Locus ID: 10432

UniProt ID: [Q96PK6](#)

Cytogenetics: 11q13.2

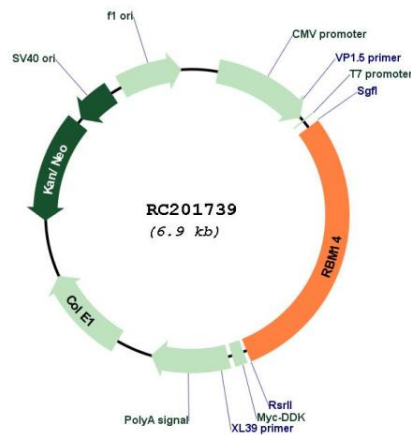
Domains: RRM

Protein Families: Druggable Genome, Stem cell - Pluripotency, Transcription Factors

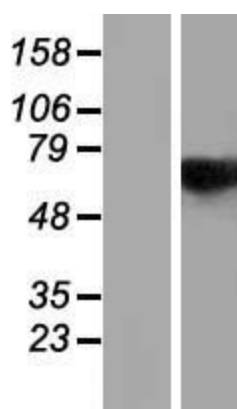
MW: 69.5 kDa

Gene Summary: This gene encodes a ribonucleoprotein that functions as a general nuclear coactivator, and an RNA splicing modulator. This protein contains two RNA recognition motifs (RRM) at the N-terminus, and multiple hexapeptide repeat domain at the C-terminus that interacts with thyroid hormone receptor-binding protein (TRBP), and is required for transcription activation. Alternatively spliced transcript variants encoding different isoforms (with opposing effects on transcription) have been described for this gene. [provided by RefSeq, Oct 2011]

Product images:



Circular map for RC201739



Western blot validation of overexpression lysate (Cat# [LY416679]) using anti-DDK antibody (Cat# [TA50011-100]). Left: Cell lysates from untransfected HEK293T cells; Right: Cell lysates from HEK293T cells transfected with RC201739 using transfection reagent MegaTran 2.0 (Cat# [TT210002]).