

Product datasheet for RC201736

SNRPD2 (NM_004597) Human Tagged ORF Clone

Product data:

Product Type: Expression Plasmids
Product Name: SNRPD2 (NM_004597) Human Tagged ORF Clone
Tag: Myc-DDK
Symbol: SNRPD2
Synonyms: Sm-D2; SMD2; SNRPD1
Mammalian Cell Selection: Neomycin
Vector: pCMV6-Entry (PS100001)
E. coli Selection: Kanamycin (25 ug/mL)
ORF Nucleotide Sequence: >RC201736 ORF sequence
Red=Cloning site Blue=ORF Green=Tags(s)

TTTTGTAATACGACTCACTATAGGGCGCCGGAATTCGTCGACTGGATCCGGTACCGAGGAGATCTGCC
GCC**CGATCGCC**

ATGAGCCTCTCAACAAGCCCAAGAGTGAGATGACCCAGAGGAGCTGCAGAAGCGAGAGGAGGAGGAAT
TTAACACCGGTCCACTCTCTGTGCTCACACAGTCAGTCAAGAACAATACCCAAGTCTCATCAACTGCCG
CAACAATAAGAACTCCTGGCCCGGTGAAGGCCCTTCGATAGGCACTGCAACATGGTCTGGAGAACGTG
AAGGAGATGTGGACTGAGGTACCCAAGAGTGGCAAGGCAAGAAGAAGTCCAAGCCAGTCAACAAAGACC
GCTACATCTCCAAGATGTTCTCGCGGGGACTCAGTCATCGTGGTCTCGGAACCCGCTCATCGCCGG
CAAG

ACGCGTACGCGGCCGCTCGAGCAGAACTCATCTCAGAAGAGGATCTGGCAGCAAATGATATCCTGGATT
ACAAGGATGACGACGATAAGGTTTAA

Protein Sequence: >RC201736 protein sequence
Red=Cloning site Green=Tags(s)

MSLLNPKSEMTPEELQKREEEFNTPGLSVLTQSVKNNTQVLIINCRNKKLLGRVKAFFDRHCNMVLENV
KEMWTEVPKSGKGKKKSKPVNKDRYISKMFLRGDSVIVVLRNPLIAGK

TRTRPLEQKLISEEDLAANDILDYKDDDDKV

Chromatograms: https://cdn.origene.com/chromatograms/mk6627_d03.zip

Restriction Sites: SgfI-MluI



[View online »](#)

Cloning Scheme:


ACCN: NM_004597

ORF Size: 354 bp

OTI Disclaimer: The molecular sequence of this clone aligns with the gene accession number as a point of reference only. However, individual transcript sequences of the same gene can differ through naturally occurring variations (e.g. polymorphisms), each with its own valid existence. This clone is substantially in agreement with the reference, but a complete review of all prevailing variants is recommended prior to use. [More info](#)

OTI Annotation: This clone was engineered to express the complete ORF with an expression tag. Expression varies depending on the nature of the gene.

Components: The ORF clone is ion-exchange column purified and shipped in a 2D barcoded Matrix tube containing 10ug of transfection-ready, dried plasmid DNA (reconstitute with 100 ul of water).

- Reconstitution Method:**
1. Centrifuge at 5,000xg for 5min.
 2. Carefully open the tube and add 100ul of sterile water to dissolve the DNA.
 3. Close the tube and incubate for 10 minutes at room temperature.
 4. Briefly vortex the tube and then do a quick spin (less than 5000xg) to concentrate the liquid at the bottom.
 5. Store the suspended plasmid at -20°C. The DNA is stable for at least one year from date of shipping when stored at -20°C.

Note: Plasmids are not sterile. For experiments where strict sterility is required, filtration with 0.22um filter is required.

RefSeq: [NM_004597.6](#)

RefSeq Size: 767 bp

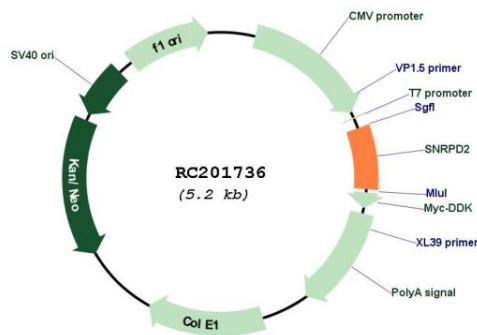
RefSeq ORF: 357 bp

Locus ID: 6633
UniProt ID: [P62316](#)
Cytogenetics: 19q13.32

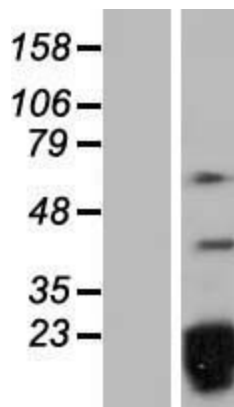
Domains: Sm
Protein Pathways: Spliceosome
MW: 13.5 kDa

Gene Summary: The protein encoded by this gene belongs to the small nuclear ribonucleoprotein core protein family. It is required for pre-mRNA splicing and small nuclear ribonucleoprotein biogenesis. Multiple transcript variants encoding different isoforms have been found for this gene. [provided by RefSeq, May 2009]

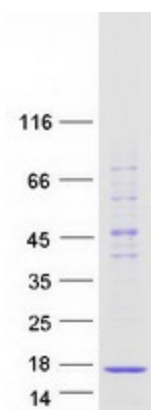
Product images:



Circular map for RC201736



Western blot validation of overexpression lysate (Cat# [LY417879]) using anti-DDK antibody (Cat# [TA50011-100]). Left: Cell lysates from untransfected HEK293T cells; Right: Cell lysates from HEK293T cells transfected with RC201736 using transfection reagent MegaTran 2.0 (Cat# [TT210002]).



Coomassie blue staining of purified SNRPD2 protein (Cat# [TP301736]). The protein was produced from HEK293T cells transfected with SNRPD2 cDNA clone (Cat# RC201736) using MegaTran 2.0 (Cat# [TT210002]).